

Catalog #: 3722

Aliases

LCK; LCK Proto-Oncogene, Src Family Tyrosine Kinase; Lymphocyte Cell-Specific Protein-Tyrosine Kinase; T Cell-Specific Protein-Tyrosine Kinase; Leukocyte C-Terminal Src Kinase; Tyrosine-Protein Kinase Lck; EC 2.7.10.2; LSK; T-Lymphocyte Specific Protein Tyrosine Kinase P56lck; Lymphocyte-Specific Protein Tyrosine Kinase; Proto-Oncogene Tyrosine-Protein Kinase LCK; P56(LSTRA) Protein-Tyrosine Kinase; Proto-Oncogene Lck; Protein YT16; EC 2.7.10; Pp58lck; P56-LCK; P56lck; IMD22; YT16

Background

Gene Name: LCK

NCBI Gene Entry: [3932](#)

UniProt Entry: [P06239](#)

Application Information

Molecular Weight: Predicted, 58 kDa; observed, 41 kDa

Clonality: Mouse monoclonal antibody

Clone ID: 24GB7085

Species Reactivity: Human, mouse, rat

Applications Tested: Western blotting (WB)

Immunogen

Recombinant protein of human LCK

Isotype

Mouse IgG1 kappa

Storage Buffer

Supplied in PBS (pH 7.4) containing 50% glycerol, and 0.02% sodium azide.

Storage

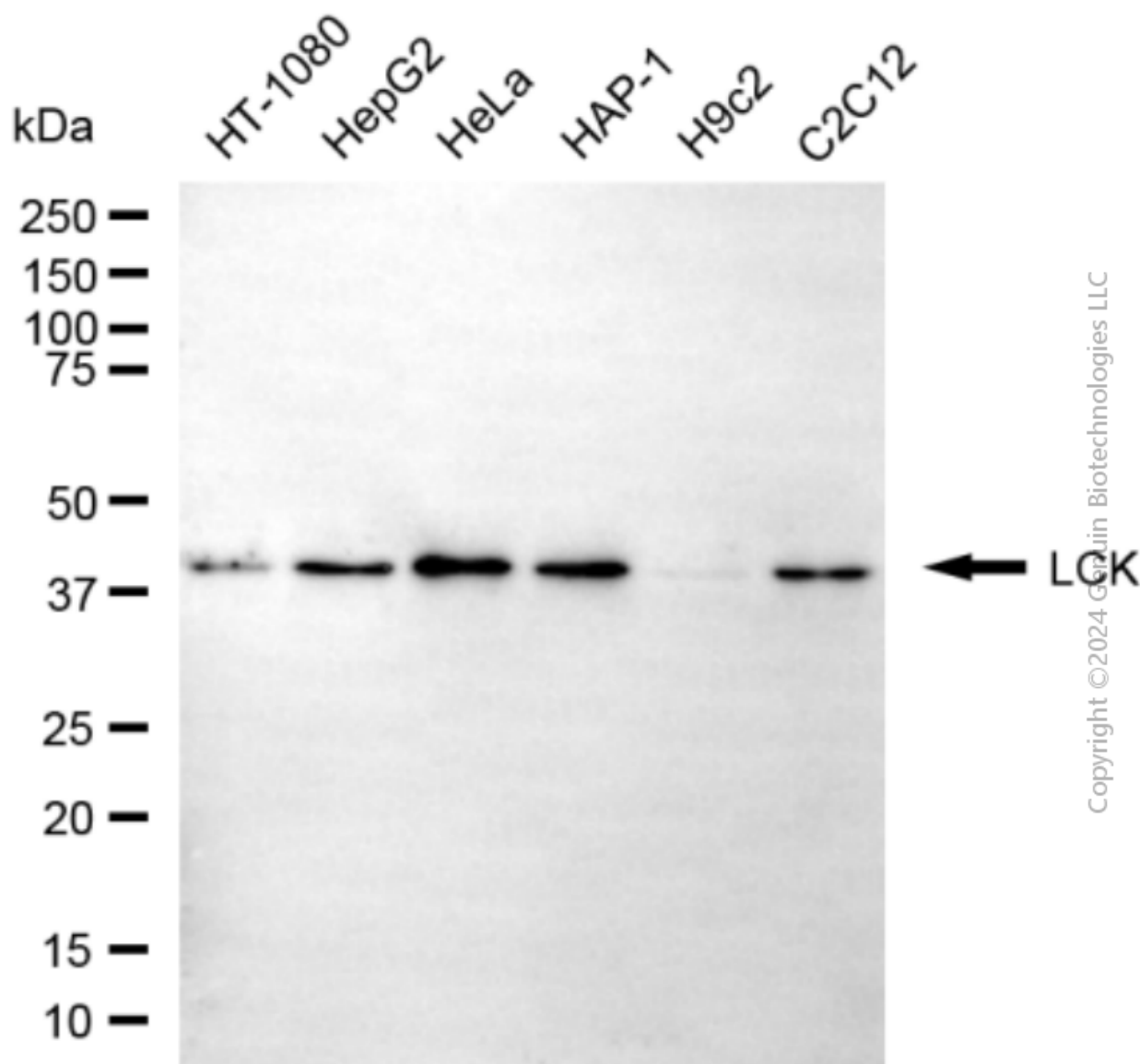
Store at -20 °C for one year.

Recommended Dilutions

Western Blotting (WB): 1:500-1:1,000

Note: This product is for research use only.

Validation Data



Western blotting analysis using anti-LCK antibody (Cat#3722). Total cell lysates (30 µg) from various cell lines were loaded and separated by SDS-PAGE. The blot was incubated with anti-LCK antibody (Cat#3722, 1:1,000) and HRP-conjugated goat anti-mouse secondary antibody (Cat#101, 1:20,000) respectively. Image was developed using FeQ™ ECL Substrate Kit (Cat#226).

SUPPORT

SUPPORT@GENUINBIOTECH.COM
TEL: +1-540-855-7041

ORDERS

SALES@GENUINBIOTECH.COM
FAX: +1-540-855-7041

WWW.GENUINBIOTECH.COM