

## Catalog #: 3725

### Aliases

MME; Membrane Metalloendopeptidase; CALLA; NEP; Neprilysin; CD10; Common Acute Lymphocytic Leukemia Antigen; Neutral Endopeptidase 24.11; Skin Fibroblast Elastase; Neutral Endopeptidase; Atriopeptidase; Enkephalinase; EC 3.4.24.11; SFE; Membrane Metallo-Endopeptidase (Neutral Endopeptidase, Enkephalinase, CALLA, CD10); Neprilysin-390; Neprilysin-411; CD10 Antigen; EC 3.4.24; CMT2T; SCA43; EPN

### Background

Gene Name: MME

NCBI Gene Entry: [4311](#)

UniProt Entry: [P08473](#)

### Application Information

Molecular Weight: Predicted, 86 kDa; observed, 95 kDa

Clonality: Mouse monoclonal antibody

Clone ID: 24GB7100

Species Reactivity: Human, rat

Applications Tested: Western blotting (WB)

### Immunogen

A synthesized peptide derived from human CD10

### Isotype

Mouse IgG1 kappa

### Storage Buffer

Supplied in PBS (pH 7.4) containing 50% glycerol, and 0.02% sodium azide.

### Storage

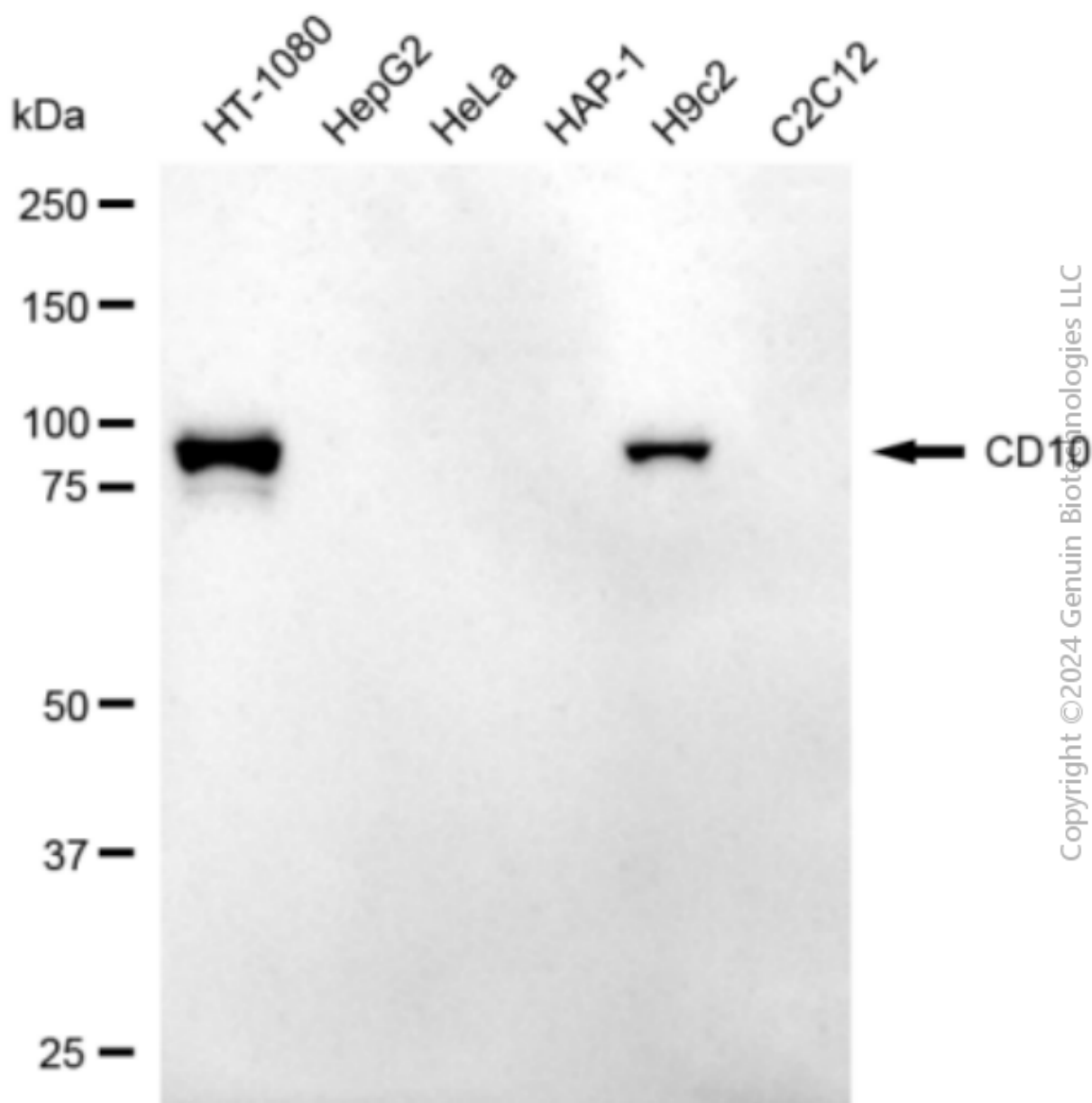
Store at -20 °C for one year.

### Recommended Dilutions

Western Blotting (WB): 1:2,500-1:5,000

**Note:** This product is for research use only.

## Validation Data



Western blotting analysis using anti-CD10 antibody (Cat#3725). Total cell lysates (30  $\mu$ g) from various cell lines were loaded and separated by SDS-PAGE. The blot was incubated with anti-CD10 antibody (Cat#3725, 1:5,000) and HRP-conjugated goat anti-mouse secondary antibody (Cat#101, 1:20,000) respectively. Image was developed using FeQ™ ECL Substrate Kit (Cat#226).

## SUPPORT

SUPPORT@GENUINBIOTECH.COM  
TEL: +1-540-855-7041

## ORDERS

SALES@GENUINBIOTECH.COM  
FAX: +1-540-855-7041

WWW.GENUINBIOTECH.COM