

## Catalog #: 3726

### Aliases

ENO2; Enolase 2; NSE; Gamma-Enolase; 2-Phospho-D-Glycerate Hydro-Lyase; Enolase 2 (Gamma, Neuronal); Neuronal Enriched Enolase; Neuron-Specific Enolase; Neural Enolase; EC 4.2.1.11; Epididymis Secretory Protein Li 279; 2-Phospho-D-Glycerate Hydrolyase; Neuron Specific Gamma Enolase; Neurone-Specific Enolase; Neuron Specific Enolase; HEL-S-279

### Background

Gene Name: ENO2

NCBI Gene Entry: [2026](#)

UniProt Entry: [P09104](#)

### Application Information

Molecular Weight: Predicted, 47 kDa; observed, 47 kDa

Clonality: Mouse monoclonal antibody

Clone ID: 24GB7105

Species Reactivity: Human, mouse, rat

Applications Tested: Western blotting (WB)

### Immunogen

Recombinant protein of human Gamma-enolase

### Isotype

Mouse IgG2b kappa

### Storage Buffer

Supplied in PBS (pH 7.4) containing 50% glycerol, and 0.02% sodium azide.

### Storage

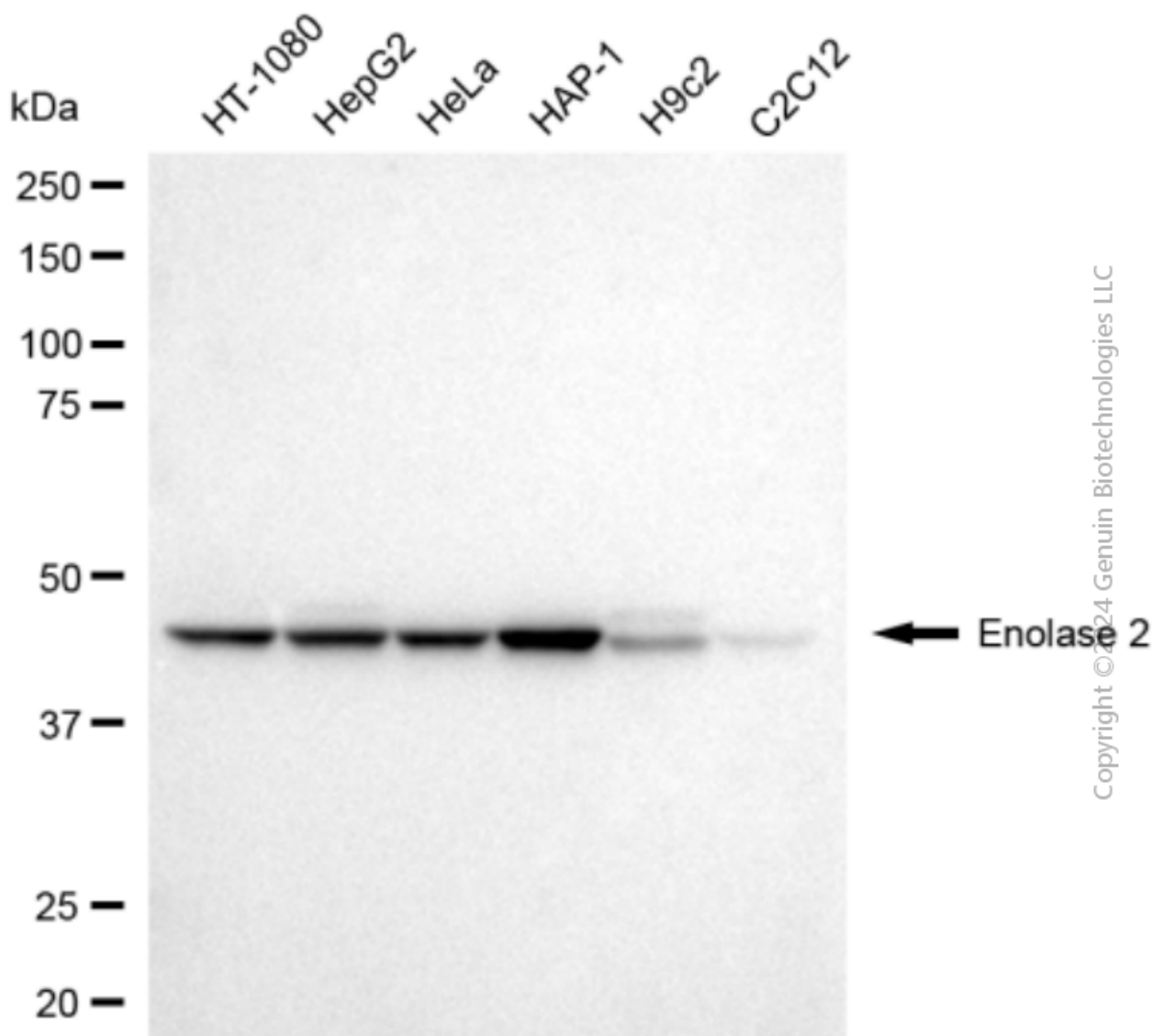
Store at -20 °C for one year.

### Recommended Dilutions

Western Blotting (WB): 1:1,000-1:2,500

**Note:** This product is for research use only.

## Validation Data



Western blotting analysis using anti-enolase 2 antibody (Cat#3726). Total cell lysates (30  $\mu$ g) from various cell lines were loaded and separated by SDS-PAGE. The blot was incubated with anti-enolase 2 antibody (Cat#3726, 1:2,500) and HRP-conjugated goat anti-mouse secondary antibody (Cat#101, 1:20,000) respectively. Image was developed using NaQ™ ECL Substrate Kit (Cat#716).

## SUPPORT

SUPPORT@GENUINBIOTECH.COM  
TEL: +1-540-855-7041

## ORDERS

SALES@GENUINBIOTECH.COM  
FAX: +1-540-855-7041

WWW.GENUINBIOTECH.COM