

## Catalog #: 3740

## Aliases

MKI67; Marker Of Proliferation Ki-67; Antigen Identified By Monoclonal Antibody Ki-67; PPP1R105; MIB-1; Protein Phosphatase 1, Regulatory Subunit 105; Molecular Immunology Borstel Antibody 1; Proliferation Marker Protein Ki-67; Antigen Ki67; Ki-67; Proliferation-Related Ki-67 Antigen; Antigen KI-67; MIB-; KIA

## Background

Gene Name: MKI67

NCBI Gene Entry: [4288](#)

UniProt Entry: [P46013](#)

## Application Information

Molecular Weight: Predicted, 359 kDa; observed, 359 kDa

Clonality: Mouse monoclonal antibody

Clone ID: 24GB7155

Species Reactivity: Human

Applications Tested: Western blotting (WB), flow cytometry (FCM), immunocytochemistry (IC), immunohistochemistry (IHC)

## Immunogen

A synthesized peptide derived from human Ki67

## Isotype

Mouse IgG1

## Storage Buffer

Supplied in PBS (pH 7.4) containing 50% glycerol, and 0.02% sodium azide.

## Storage

Store at -20 °C for one year.

## Recommended Dilutions

Western Blotting (WB): 1:2,500-1:5,000

Flow Cytometry (FCM): 1:2,000

Immunocytochemistry (IC): 1:100-1:1,000

Immunohistochemistry (IHC): 1:50-1:100

---

### SUPPORT

SUPPORT@GENUINBIOTECH.COM  
TEL: +1-540-855-7041

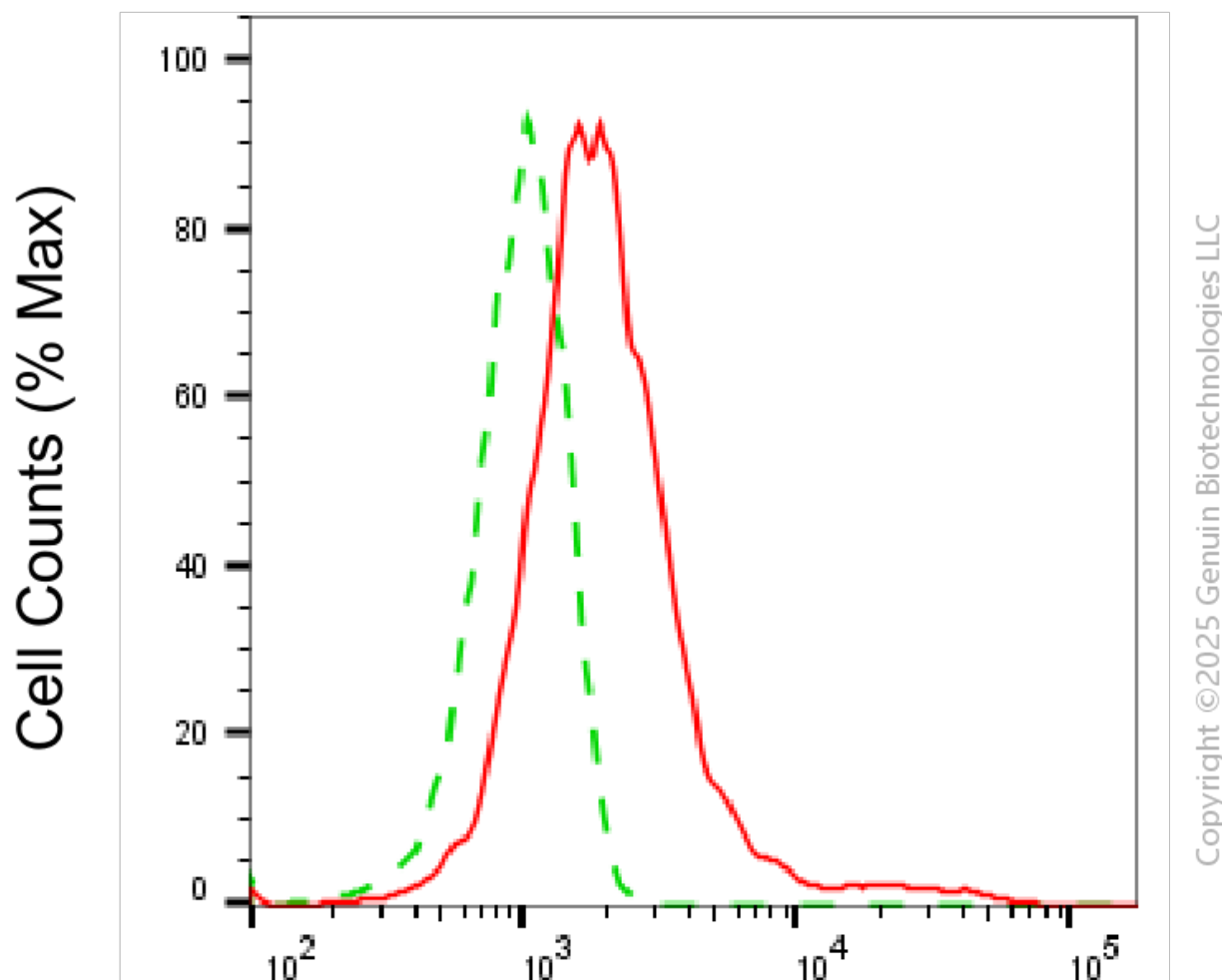
### ORDERS

SALES@GENUINBIOTECH.COM  
FAX: +1-540-855-7041

### WWW.GENUINBIOTECH.COM

**Note:** This product is for research use only.

## Validation Data



## Marker of proliferation Ki-67-Alexa Fluor® 647

Flow cytometric analysis of Marker of proliferation Ki-67 expression in HAP-1 cells using anti-Marker of proliferation Ki-67 antibody (Cat#3740, 1:2,000). Green, isotype control; red, Marker of proliferation Ki-67.

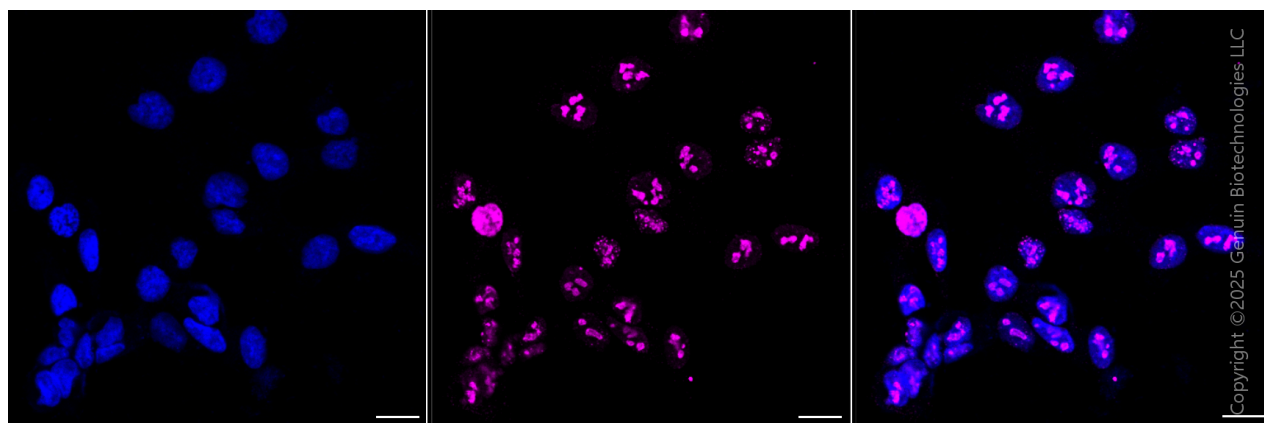
### SUPPORT

SUPPORT@GENUINBIOTECH.COM  
TEL: +1-540-855-7041

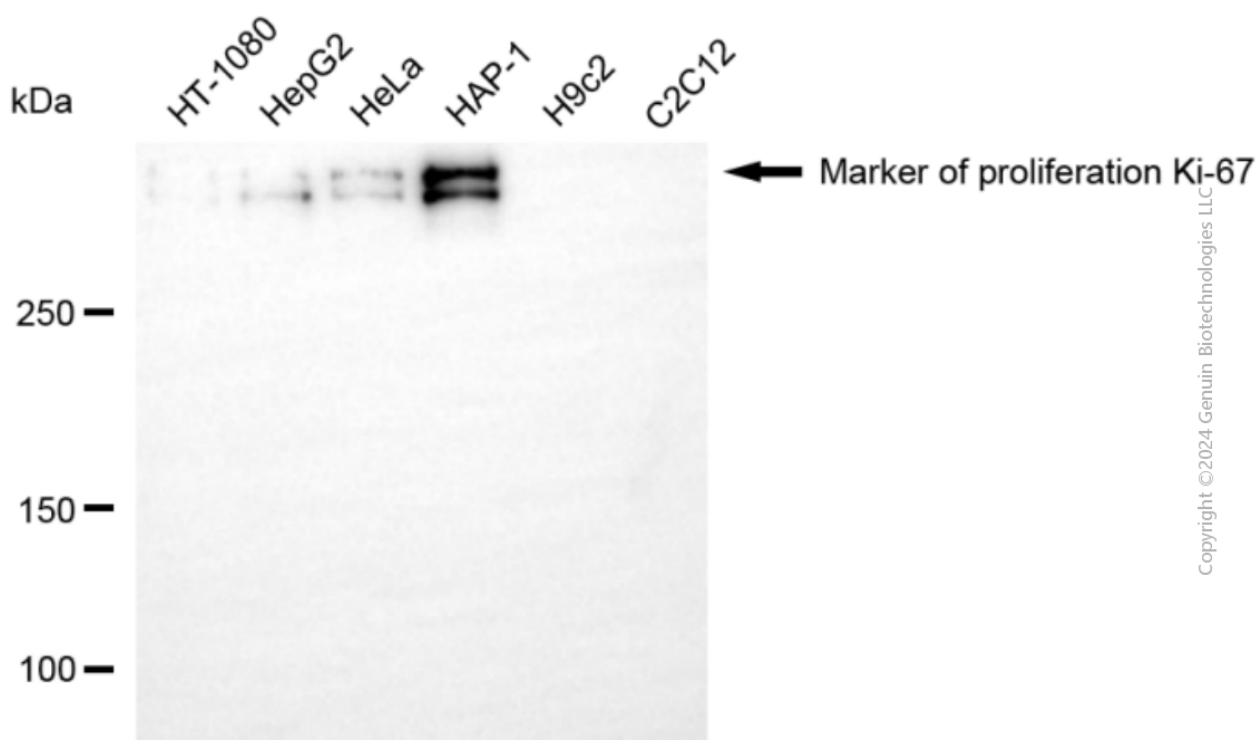
### ORDERS

SALES@GENUINBIOTECH.COM  
FAX: +1-540-855-7041

### WWW.GENUINBIOTECH.COM



Immunocytochemical staining of HAP-1 cells with anti-Marker of proliferation Ki-67 antibody (Cat#3740, 1:1,000). Nuclei were stained blue with DAPI; Marker of proliferation Ki-67 was stained magenta with Alexa Fluor® 647. Images were taken using Leica stellaris 5. Protein abundance based on laser Intensity and Smart Gain□High. Scale bar, 20 μm.



Western blotting analysis using anti-marker of proliferation Ki-67 antibody (Cat#3740). Total cell lysates (30 μg) from various cell lines were loaded and separated by SDS-PAGE. The blot was incubated with anti-marker of proliferation Ki-67 antibody (Cat#3740, 1:5,000) and HRP-conjugated goat anti-mouse secondary antibody (Cat#101, 1:20,000) respectively. Image was developed using NaQ™ ECL Substrate Kit (Cat#716).

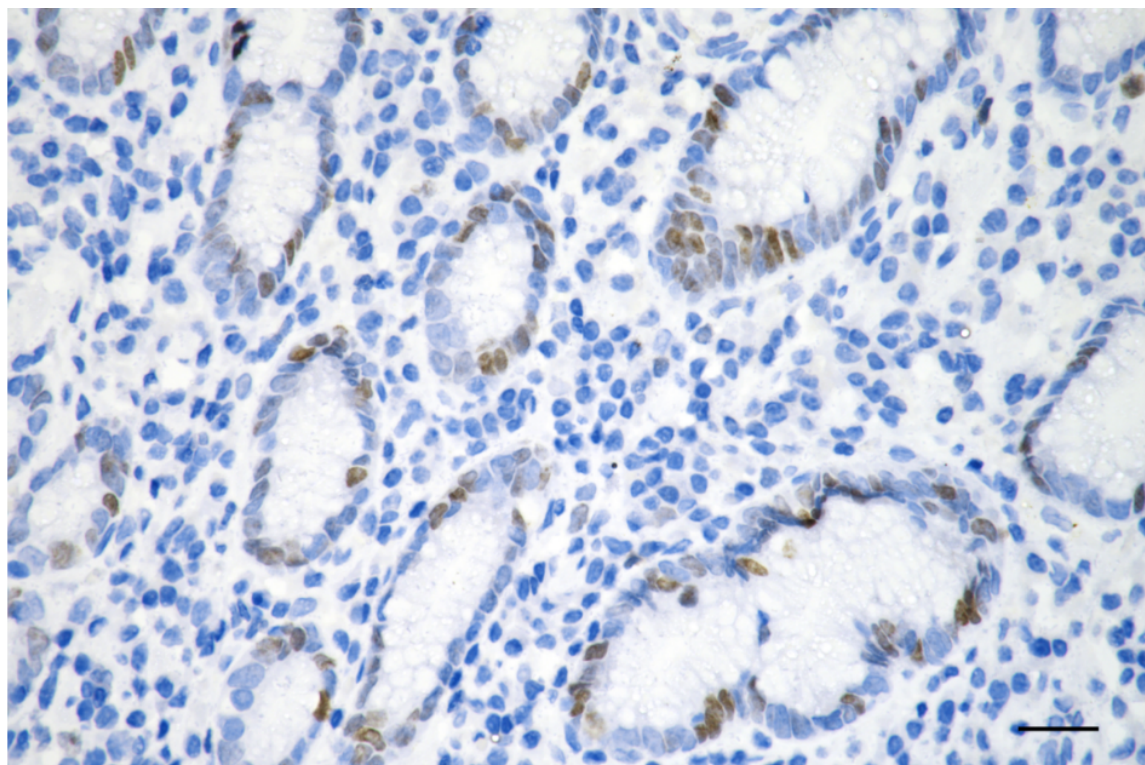
## SUPPORT

SUPPORT@GENUINBIOTECH.COM  
TEL: +1-540-855-7041

## ORDERS

SALES@GENUINBIOTECH.COM  
FAX: +1-540-855-7041

[WWW.GENUINBIOTECH.COM](http://WWW.GENUINBIOTECH.COM)



Copyright ©2025 Genuin Biotechnologies LLC

Immunohistochemistry was performed on paraffin-embedded human gastric carcinoma using anti-marker of proliferation Ki-67 antibody (Cat#3740, 1:100). Antigen retrieval was done in sodium citrate buffer (pH 6.0). DAB was used for detection, with hematoxylin counterstaining. Images were acquired using a Nikon Ci-L Plus microscope (40× objective). Scale bar: 25  $\mu$ m.

**SUPPORT**

SUPPORT@GENUINBIOTECH.COM  
TEL: +1-540-855-7041

**ORDERS**

SALES@GENUINBIOTECH.COM  
FAX: +1-540-855-7041

**WWW.GENUINBIOTECH.COM**