

Catalog #: 3748

Aliases

PAX8; Paired Box 8; PAX-8; Paired Box Protein Pax-8; Paired Domain Gene 8; Paired Box Gene 8

Background

Gene Name: PAX8

NCBI Gene Entry: [7849](#)

UniProt Entry: [Q06710](#)

Application Information

Molecular Weight: Predicted, 48 kDa; observed, 48 kDa

Clonality: Mouse monoclonal antibody

Clone ID: 24GB7185

Species Reactivity: Human, mouse, rat

Applications Tested: Western blotting (WB), immunocytochemistry (IC)

Immunogen

Recombinant protein of human PAX8

Isotype

Mouse IgG1 kappa

Storage Buffer

Supplied in PBS (pH 7.4) containing 50% glycerol, and 0.02% sodium azide.

Storage

Store at -20 °C for one year.

Recommended Dilutions

Western Blotting (WB): 1:2,500-1:5,000

Immunocytochemistry (IC): 1:100-1:1,000

Note: This product is for research use only.

Validation Data

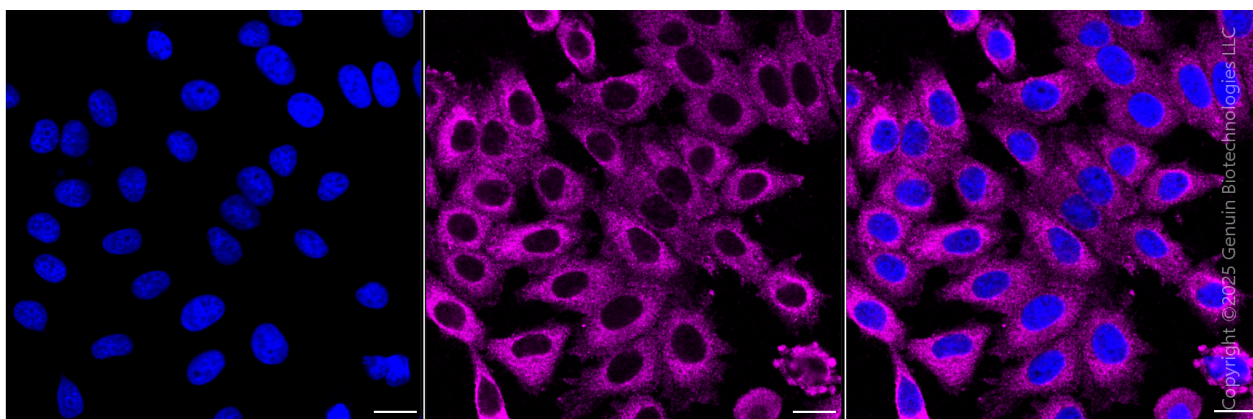
SUPPORT

SUPPORT@GENUINBIOTECH.COM
TEL: +1-540-855-7041

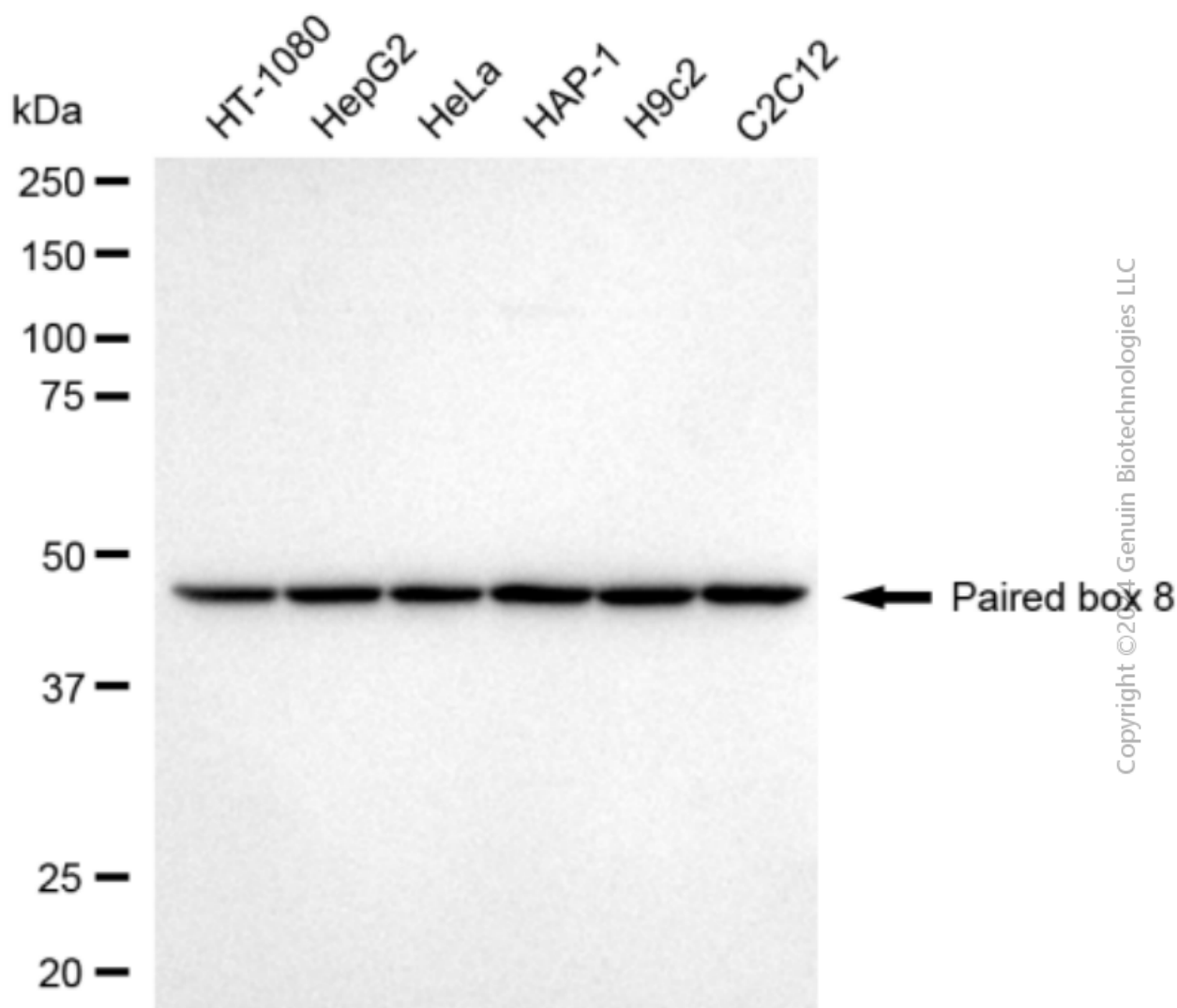
ORDERS

SALES@GENUINBIOTECH.COM
FAX: +1-540-855-7041

WWW.GENUINBIOTECH.COM



Immunocytochemical staining of HepG2 cells with anti-Paired box 8 antibody (Cat#3748, 1:1,000). Nuclei were stained blue with DAPI; Paired box 8 was stained magenta with Alexa Fluor® 647. Images were taken using Leica stellaris 5. Protein abundance based on laser intensity and smart gain: Medium. Scale bar, 20 μ m.

**SUPPORT**

SUPPORT@GENUINBIOTECH.COM
TEL: +1-540-855-7041

ORDERS

SALES@GENUINBIOTECH.COM
FAX: +1-540-855-7041

WWW.GENUINBIOTECH.COM

Western blotting analysis using anti-paired box 8 antibody (Cat#3748). Total cell lysates (30 µg) from various cell lines were loaded and separated by SDS-PAGE. The blot was incubated with anti-paired box 8 antibody (Cat#3748, 1:5,000) and HRP-conjugated goat anti-mouse secondary antibody (Cat#101, 1:20,000) respectively. Image was developed using NaQ™ ECL Substrate Kit (Cat#716).