

Anti-Ring Finger Protein 20 Mouse Monoclonal Antibody



Catalog #: 3752

Aliases

RNF20; Ring Finger Protein 20; BRE1A; HBRE1; BRE1; RING-Type E3 Ubiquitin Transferase BRE1A; E3 Ubiquitin-Protein Ligase BRE1A; FLJ20382; FLJ11189; KAIA2779; BRE1 E3 Ubiquitin Ligase Homolog (S. Cerevisiae); BRE1 E3 Ubiquitin Ligase Homolog; Homolog Of S. Cerevisiae BRE1; RING Finger Protein 20; EC 2.3.2.27; EC 6.3.2; BRE1-A

Background

Gene Name: RNF20

NCBI Gene Entry: [56254](#)

UniProt Entry: [Q5VTR2](#)

Application Information

Molecular Weight: Predicted, 114 kDa; observed, 120 kDa

Clonality: Mouse monoclonal antibody

Clone ID: 24GB7205

Species Reactivity: Human, mouse, rat

Applications Tested: Western blotting (WB), immunocytochemistry (IC)

Immunogen

Recombinant protein of human RNF20

Isotype

Mouse IgG1 kappa

Storage Buffer

Supplied in PBS (pH 7.4) containing 50% glycerol, and 0.02% sodium azide.

Storage

Store at -20 °C for one year.

Recommended Dilutions

Western Blotting (WB): 1:2,500-1:5,000

Immunocytochemistry (IC): 1:100-1:1,000

Note: This product is for research use only.

SUPPORT

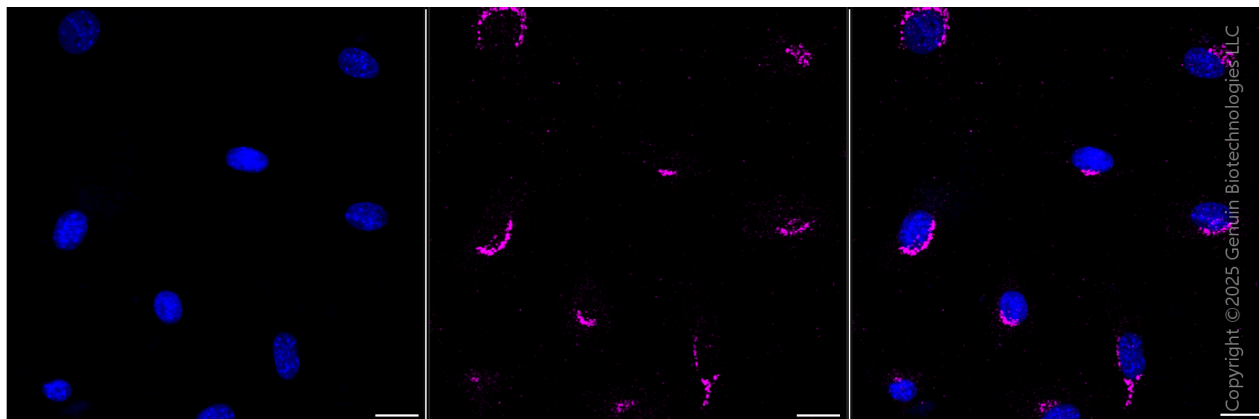
SUPPORT@GENUINBIOTECH.COM
TEL: +1-540-855-7041

ORDERS

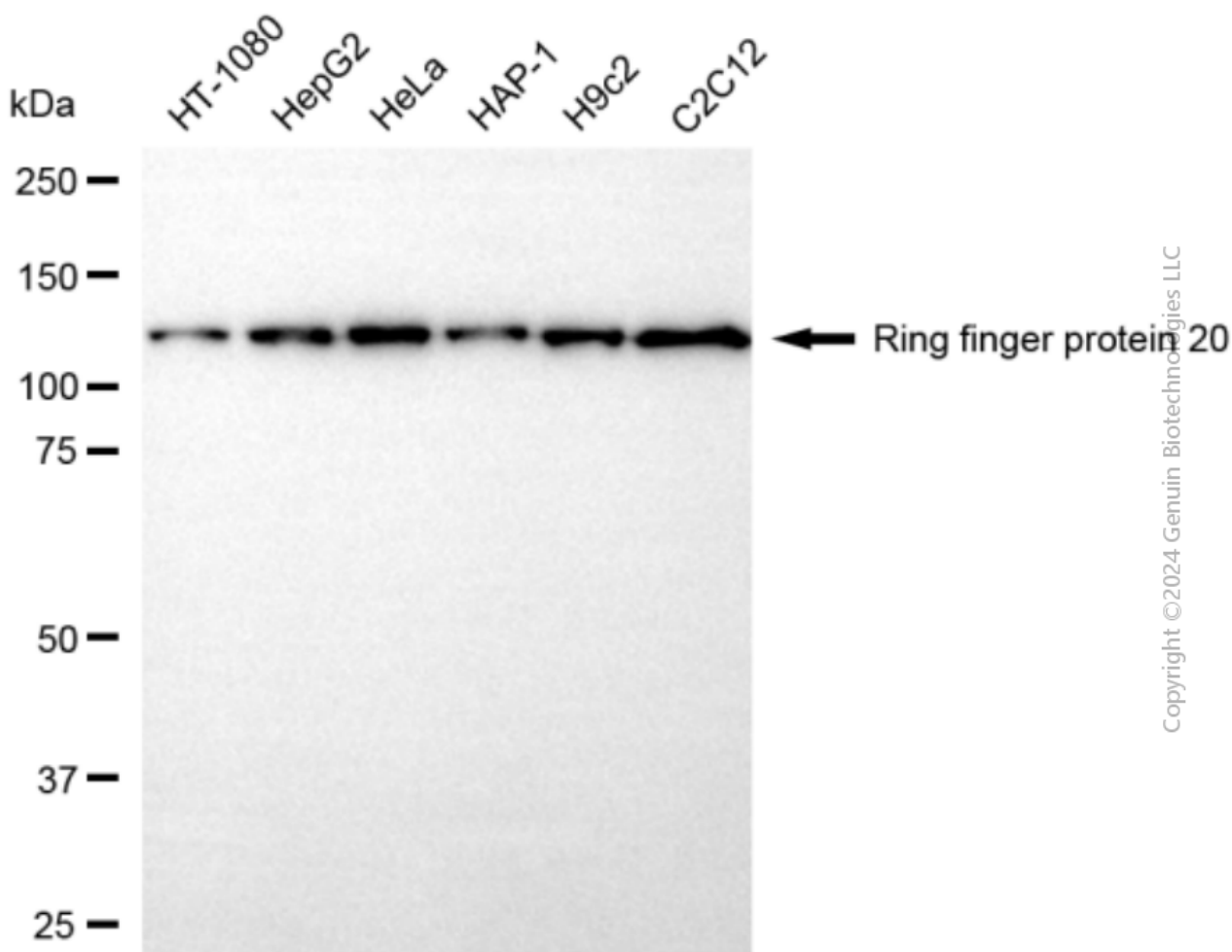
SALES@GENUINBIOTECH.COM
FAX: +1-540-855-7041

WWW.GENUINBIOTECH.COM

Validation Data



Immunocytochemical staining of C2C12 cells with anti-Ring finger protein 20 antibody (Cat#3752, 1:1,000) . Nuclei were stained blue with DAPI; Ring finger protein 20 was stained magenta with Alexa Fluor® 647. Images were taken using Leica stellaris 5. Protein abundance based on laser Intensity and smart gain: Medium. Scale bar, 20 μ m.



Anti-Ring Finger Protein 20 Mouse Monoclonal Antibody

PAGE 3

Western blotting analysis using anti-ring finger protein 20 antibody (Cat#3752). Total cell lysates (30 µg) from various cell lines were loaded and separated by SDS-PAGE. The blot was incubated with anti-ring finger protein 20 antibody (Cat#3752, 1:5,000) and HRP-conjugated goat anti-mouse secondary antibody (Cat#101, 1:20,000) respectively. Image was developed using NaQ™ ECL Substrate Kit (Cat#716).

SUPPORT

SUPPORT@GENUINBIOTECH.COM
TEL: +1-540-855-7041

ORDERS

SALES@GENUINBIOTECH.COM
FAX: +1-540-855-7041

WWW.GENUINBIOTECH.COM