

## Catalog #: 3758

## Aliases

LEF1; Lymphoid Enhancer Binding Factor 1; Lymphoid Enhancer-Binding Factor 1;  
TCF1ALPHA; TCF7L3; TCF10; T Cell-Specific Transcription Factor 1-Alpha; TCF1-Alpha;  
LEF-1

## Background

Gene Name: LEF1

NCBI Gene Entry: [51176](#)

UniProt Entry: [Q9UJU2](#)

## Application Information

Molecular Weight: Predicted, 44 kDa; observed, 50 kDa

Clonality: Mouse monoclonal antibody

Clone ID: 24GB7235

Species Reactivity: Human, mouse

Applications Tested: Western blotting (WB), flow cytometry (FCM), immunocytochemistry (IC)

## Immunogen

Recombinant protein of human TCF1 alpha

## Isotype

Mouse IgG1 kappa

## Storage Buffer

Supplied in PBS (pH 7.4) containing 50% glycerol, and 0.02% sodium azide.

## Storage

Store at -20 °C for one year.

## Recommended Dilutions

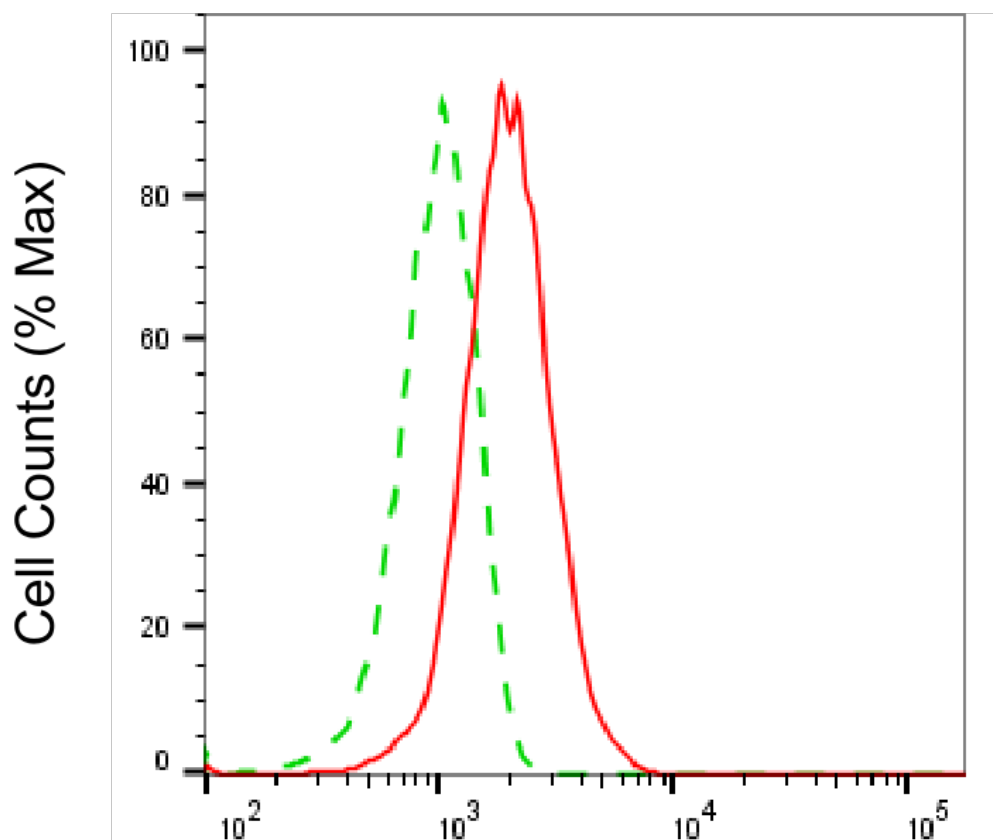
Western Blotting (WB): 1:2,500-1:5,000

Flow Cytometry (FCM): 1:2,000

Immunocytochemistry (IC): 1:100-1:1,000

**Note:** This product is for research use only.

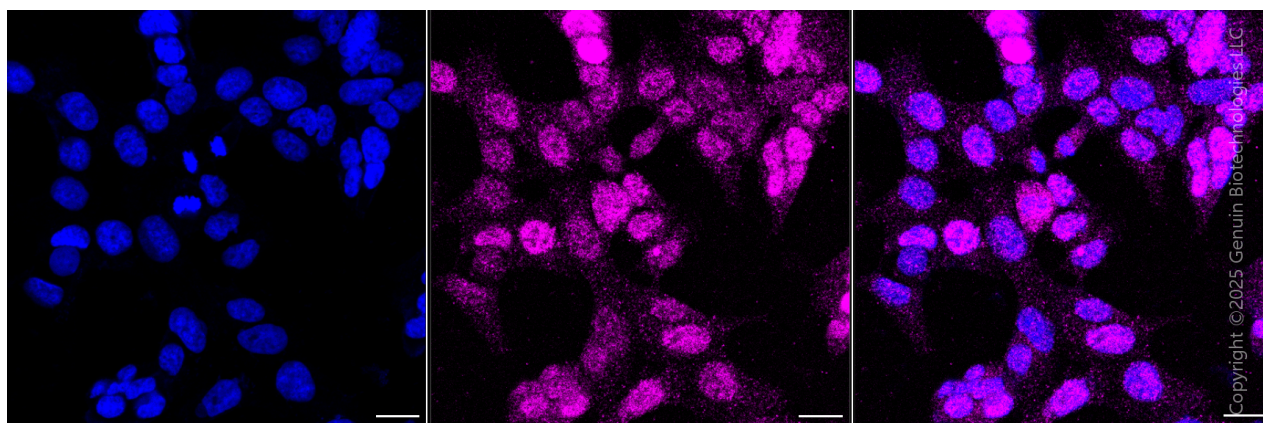
## Validation Data



Copyright ©2025 Genuin Biotechnologies LLC

## Lymphoid enhancer binding factor 1-Alexa Fluor® 647

Flow cytometric analysis of Lymphoid enhancer binding factor 1 expression in HAP-1 cells using anti-Lymphoid enhancer binding factor 1 antibody (Cat#3758, 1:2,000). Green, isotype control; red, Lymphoid enhancer binding factor 1.



Copyright ©2025 Genuin Biotechnologies LLC

Immunocytochemical staining of HAP1 cells with anti-Lymphoid enhancer binding factor 1 antibody (Cat#3758, 1:1,000). Nuclei were stained blue with DAPI; Lymphoid enhancer binding

## SUPPORT

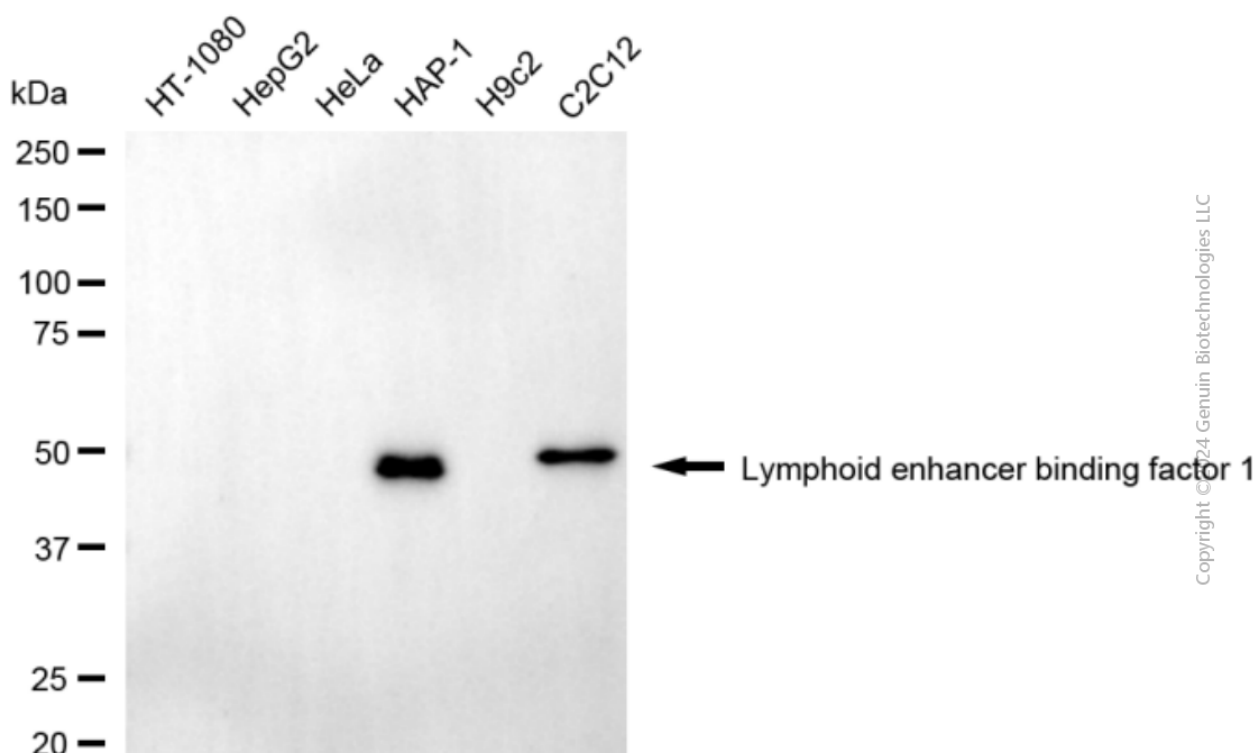
SUPPORT@GENUINBIOTECH.COM  
TEL: +1-540-855-7041

## ORDERS

SALES@GENUINBIOTECH.COM  
FAX: +1-540-855-7041

WWW.GENUINBIOTECH.COM

factor 1 was stained magenta with Alexa Fluor® 647. Images were taken using Leica stellaris 5. Protein abundance based on laser Intensity and smart gain: Medium. Scale bar, 20 µm.



Western blotting analysis using anti-lymphoid enhancer binding factor 1 antibody (Cat#3758). Total cell lysates (30 µg) from various cell lines were loaded and separated by SDS-PAGE. The blot was incubated with anti-lymphoid enhancer binding factor 1 antibody (Cat#3758, 1:5,000) and HRP-conjugated goat anti-mouse secondary antibody (Cat#101, 1:20,000) respectively. Image was developed using FeQ™ ECL Substrate Kit (Cat#226).