

Catalog #: 3762

Aliases

CD8A; CD8 Subunit Alpha; T-Cell Surface Glycoprotein CD8 Alpha Chain; CD8alpha; P32; T-Lymphocyte Differentiation Antigen T8/Leu-2; CD8 Antigen, Alpha Polypeptide (P32); CD8a Molecule; CD8; Leu2 T-Lymphocyte Antigen; OKT8 T-Cell Antigen; T-Cell Antigen Leu2; T Cell Co-Receptor T8; T-Cell Antigen; CD8a Antigen; IMD116; Leu2; MAL

Background

Gene Name: CD8A

NCBI Gene Entry: [925](#)

UniProt Entry: [P01732](#)

Application Information

Molecular Weight: Predicted, 26 kDa; observed, 45 kDa

Clonality: Rabbit polyclonal antibody

Species Reactivity: Human, mouse, rat

Applications Tested: Western blotting (WB)

Immunogen

A synthesized peptide derived from human CD8a

Isotype

Rabbit IgG

Storage Buffer

Supplied in PBS (pH 7.4) containing 50% glycerol, and 0.02% sodium azide.

Storage

Store at -20 °C for one year.

Recommended Dilutions

Western Blotting (WB): 1:1,000-1:5,000

Note: This product is for research use only.

Validation Data

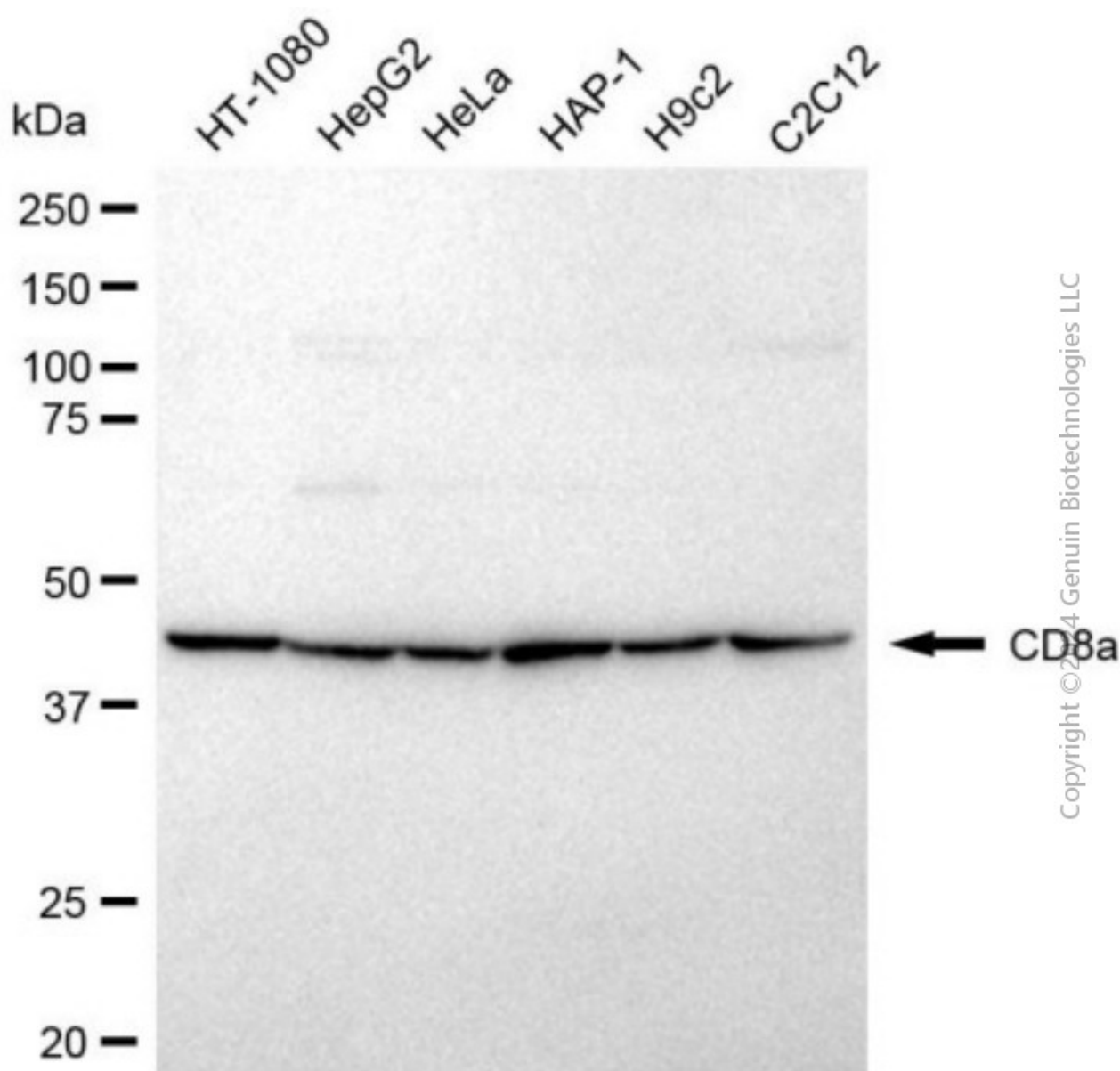
SUPPORT

SUPPORT@GENUINBIOTECH.COM
TEL: +1-540-855-7041

ORDERS

SALES@GENUINBIOTECH.COM
FAX: +1-540-855-7041

WWW.GENUINBIOTECH.COM



Western blotting analysis using anti-CD8a antibody (Cat#3762). Total cell lysates (30 µg) from various cell lines were loaded and separated by SDS-PAGE. The blot was incubated with anti-CD8a antibody (Cat#3762, 1:5,000) and HRP-conjugated goat anti-rabbit secondary antibody (Cat#201, 1:20,000) respectively. Image was developed using FeQ™ ECL Substrate Kit (Cat#226).

SUPPORT

SUPPORT@GENUINBIOTECH.COM
TEL: +1-540-855-7041

ORDERS

SALES@GENUINBIOTECH.COM
FAX: +1-540-855-7041

WWW.GENUINBIOTECH.COM