

## Catalog #: 3772

### Aliases

RPS6; Ribosomal Protein S6; 40S Ribosomal Protein S6; Phosphoprotein NP33; ES6; S6; Small Ribosomal Subunit Protein ES6

### Background

Gene Name: RPS6

NCBI Gene Entry: [6194](#)

UniProt Entry: [P62753](#)

### Application Information

Molecular Weight: Predicted, 29 kDa; Observed, 32 kDa

Clonality: Mouse monoclonal antibody

Clone ID: 24GB8565

Species Reactivity: Human, mouse, rat

Applications Tested: Western blotting (WB), immunocytochemistry (IC)

### Immunogen

Recombinant protein of human RPS6

### Isotype

Mouse IgG1

### Storage Buffer

Supplied in TBS (pH 7.4) containing 50% glycerol, 1% BSA and 0.02% Proclin 300.

### Storage

Store at -20 °C for one year.

### Recommended Dilutions

Western Blotting (WB): 1:500-1:2,500

Immunocytochemistry (IC): 1:100-1:1,000

**Note:** This product is for research use only.

### Validation Data

---

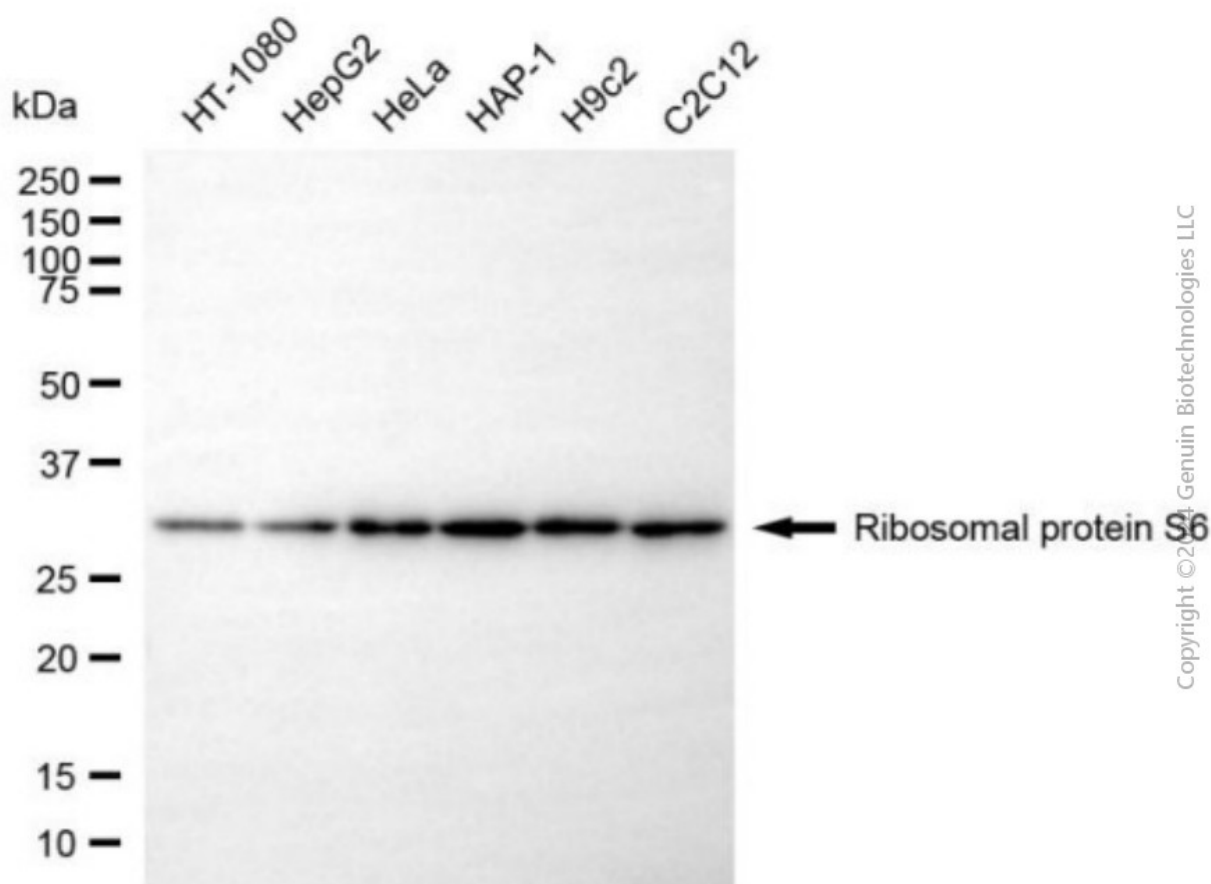
#### SUPPORT

SUPPORT@GENUINBIOTECH.COM  
TEL: +1-540-855-7041

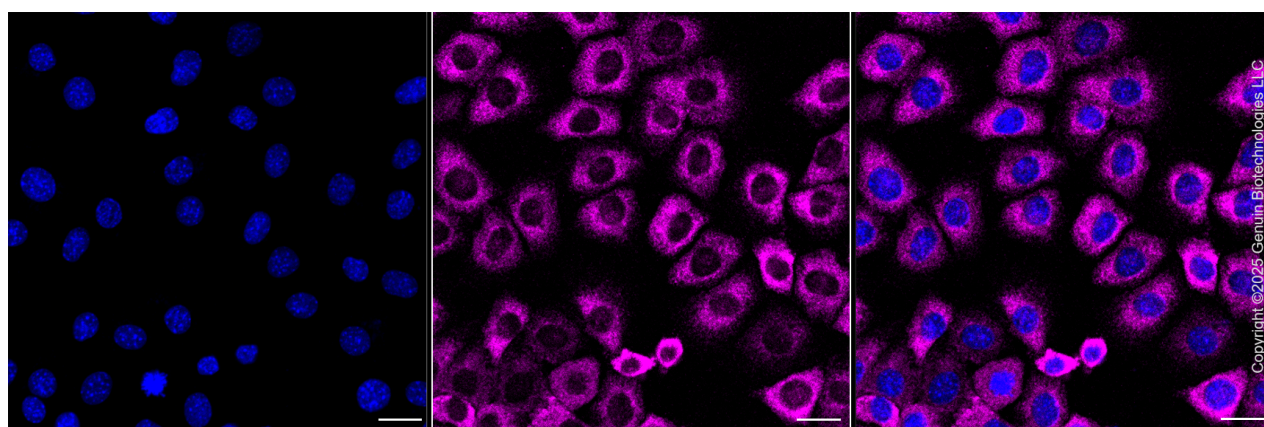
#### ORDERS

SALES@GENUINBIOTECH.COM  
FAX: +1-540-855-7041

[WWW.GENUINBIOTECH.COM](http://WWW.GENUINBIOTECH.COM)



Western blotting analysis using anti-ribosomal protein S6 antibody (Cat#3772). Total cell lysates (30 µg) from various cell lines were loaded and separated by SDS-PAGE. The blot was incubated with anti-ribosomal protein S6 antibody (Cat#3772, 1:2,500) and HRP-conjugated goat anti-mouse secondary antibody (Cat#101, 1:20,000) respectively. Image was developed using NaQ™ ECL Substrate Kit (Cat#716).



Immunocytochemical staining of C2C12 cells with anti-Ribosomal protein S6 antibody (Cat#3772, 1:1,000) . Nuclei were stained blue with DAPI; Ribosomal protein S6 was stained

## SUPPORT

SUPPORT@GENUINBIOTECH.COM  
TEL: +1-540-855-7041

## ORDERS

SALES@GENUINBIOTECH.COM  
FAX: +1-540-855-7041

WWW.GENUINBIOTECH.COM

magenta with Alexa Fluor® 647. Images were taken using Leica stellaris 5. Protein abundance based on laser Intensity and smart gain: Medium. Scale bar, 20 µm.