

Catalog #: 3777

Aliases

CBX3; Chromobox 3; HP1Hs-Gamma; HP1gamma; Heterochromatin Protein 1 Homolog Gamma; Chromobox Protein Homolog 3; Modifier 2 Protein; HECH; Chromobox Homolog 3 (HP1 Gamma Homolog, Drosophila); Chromobox Homolog 3 (Drosophila HP1 Gamma); Heterochromatin Protein HP1 Gamma; HP1 Gamma Homolog (Drosophila); Heterochromatin-Like Protein 1; Chromobox Homolog 3; HP1 Gamma Homolog; HP1-GAMMA; HP1 Gamma

Background

Gene Name: CBX3

NCBI Gene Entry: [11335](#)

UniProt Entry: [Q13185](#)

Application Information

Molecular Weight: Predicted, 21 kDa; Observed, 20 kDa

Clonality: Mouse monoclonal antibody

Clone ID: 24GB8590

Species Reactivity: Human, mouse, rat

Applications Tested: Western blotting (WB), immunocytochemistry (IC), flow cytometry (FCM)

Immunogen

Recombinant protein of human HP1 gamma

Isotype

Mouse IgG

Storage Buffer

Supplied in PBS (pH 7.4) containing 50% glycerol, and 0.02% sodium azide.

Storage

Store at -20 °C for one year.

Recommended Dilutions

Western Blotting (WB): 1:1,000-1:5,000

Immunocytochemistry (IC): 1:100-1:1,000

Flow Cytometry (FCM): 1:2,000

SUPPORT

SUPPORT@GENUINBIOTECH.COM
TEL: +1-540-855-7041

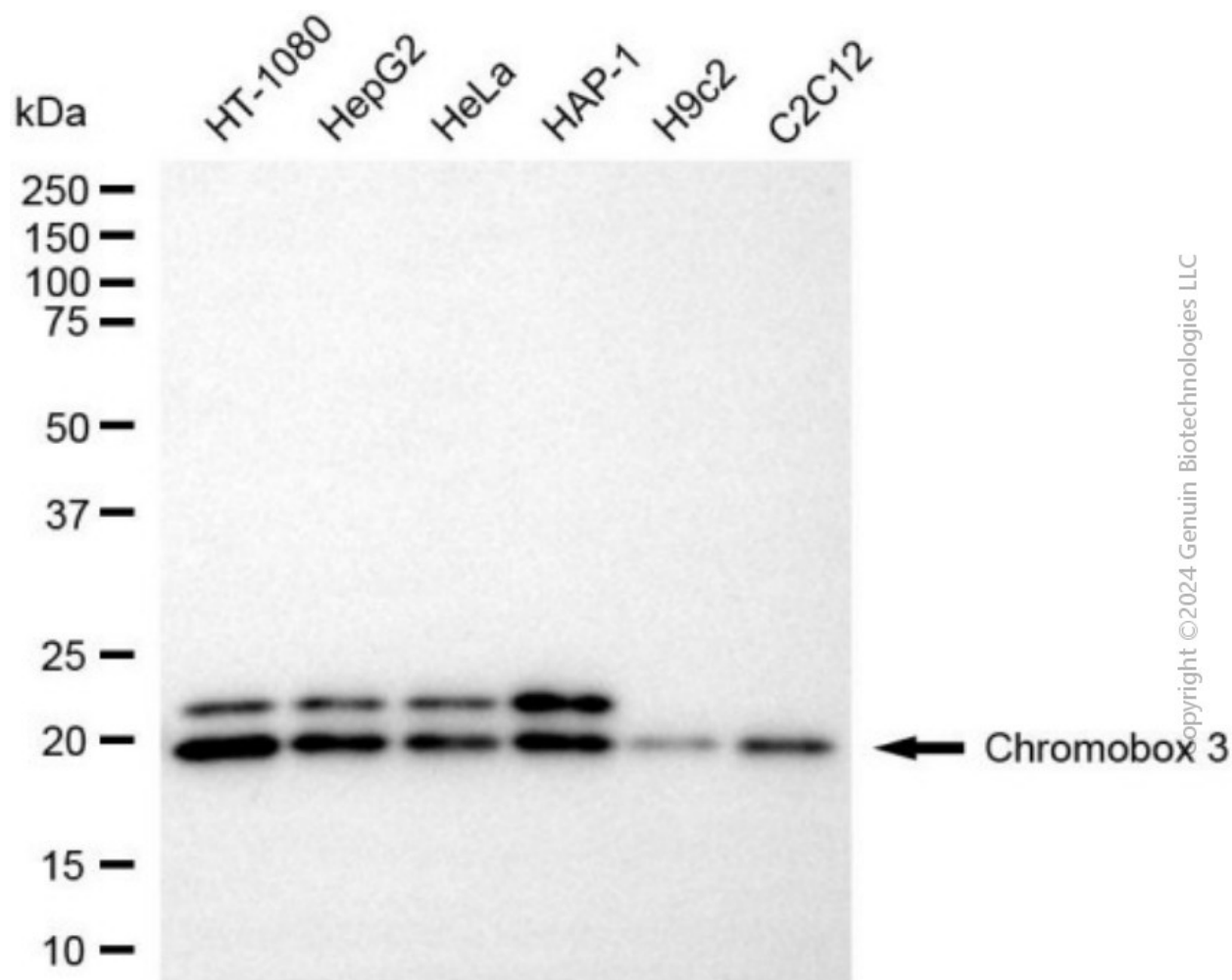
ORDERS

SALES@GENUINBIOTECH.COM
FAX: +1-540-855-7041

WWW.GENUINBIOTECH.COM

Note: This product is for research use only.

Validation Data



Western blotting analysis using anti-chromobox 3 antibody (Cat#3777). Total cell lysates (30 μ g) from various cell lines were loaded and separated by SDS-PAGE. The blot was incubated with anti-chromobox 3 antibody (Cat#3777, 1:5,000) and HRP-conjugated goat anti-mouse secondary antibody (Cat#101, 1:20,000) respectively. Image was developed using NaQ™ ECL Substrate Kit (Cat#716).

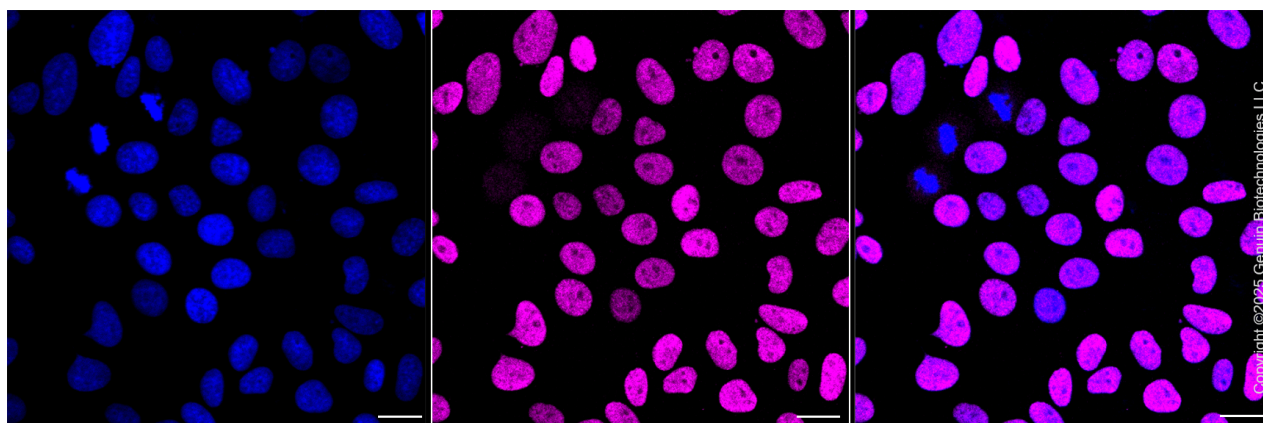
SUPPORT

SUPPORT@GENUINBIOTECH.COM
TEL: +1-540-855-7041

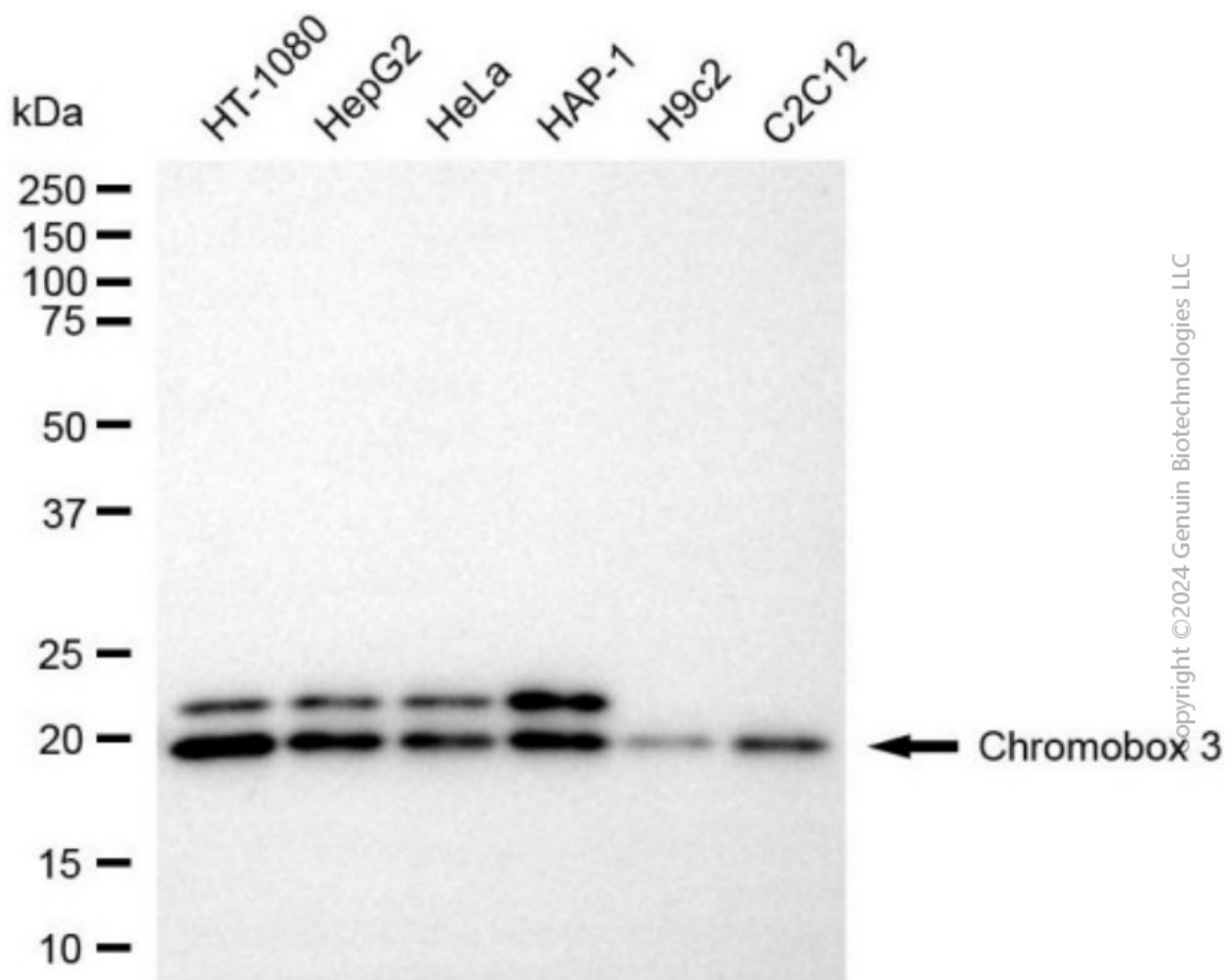
ORDERS

SALES@GENUINBIOTECH.COM
FAX: +1-540-855-7041

WWW.GENUINBIOTECH.COM



Immunocytochemical staining of HepG2 cells with anti-Chromobox 3 associated protein antibody (Cat#3777, 1:1,000). Nuclei were stained blue with DAPI; Chromobox 3 associated protein was stained magenta with Alexa Fluor® 647. Images were taken using Leica stellaris 5. Protein abundance based on laser Intensity and smart gain: High. Scale bar, 20 μ m.



Western blotting analysis using anti-chromobox 3 antibody (Cat#3777). Total cell lysates (30 μ g) from various cell lines were loaded and separated by SDS-PAGE. The blot was incubated with

SUPPORT

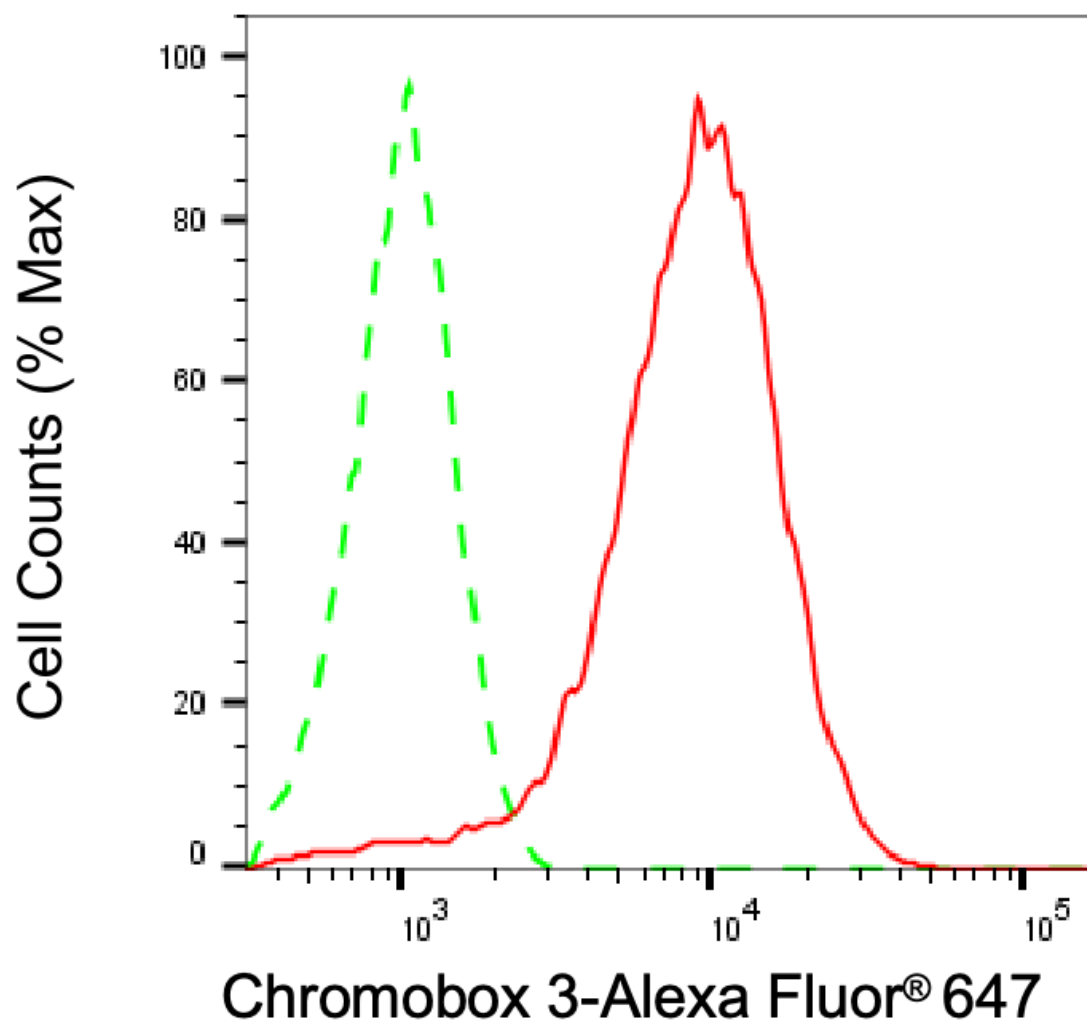
SUPPORT@GENUINBIOTECH.COM
TEL: +1-540-855-7041

ORDERS

SALES@GENUINBIOTECH.COM
FAX: +1-540-855-7041

WWW.GENUINBIOTECH.COM

anti-chromobox 3 antibody (Cat#3777, 1:5,000) and HRP-conjugated goat anti-mouse secondary antibody (Cat#101, 1:20,000) respectively. Image was developed using NaQ™ ECL Substrate Kit (Cat#716).



Copyright ©2025 Genuin Biotechnologies LLC

Flow cytometric analysis of Chromobox 3 expression in HepG2 cells using anti-Chromobox 3 antibody (Cat#3777, 1:2,000). Green, isotype control; red, Chromobox 3.