

Catalog #: 3784

Aliases

ACTB; Actin Beta; Actin, Cytoplasmic 1; PS1TP5-Binding Protein 1; Beta Cytoskeletal Actin; I(2)-Actin; Beta-Actin; EC 3.6.4.-; PS1TP5BP1; B-Actin; BKRNS; BRWS1; CSMH; DDS1; THC8; BNS

Background

Gene Name: ACTB

NCBI Gene Entry: [60](#)

UniProt Entry: [P60709](#)

Application Information

Molecular Weight: Predicted, 42 kDa; observed, 42 kDa

Clonality: Mouse monoclonal antibody

Clone ID: 24GB7855

Species Reactivity: Human, mouse, rat

Applications Tested: Western blotting (WB), flow cytometry (FCM), immunocytochemistry (IC), immunohistochemistry (IHC)

Immunogen

A synthesized peptide derived from human beta Actin

Isotype

Mouse IgG1

Storage Buffer

Supplied in PBS (pH 7.4) containing 50% glycerol, and 0.02% sodium azide.

Storage

Store at -20 °C for one year.

Recommended Dilutions

Western Blotting (WB): 1:2,000-1:10,000

Flow Cytometry (FCM): 1:2,000

Immunocytochemistry (IC): 1:100-1:1,000

Immunohistochemistry (IHC): 1:100-1:200

SUPPORT

SUPPORT@GENUINBIOTECH.COM
TEL: +1-540-855-7041

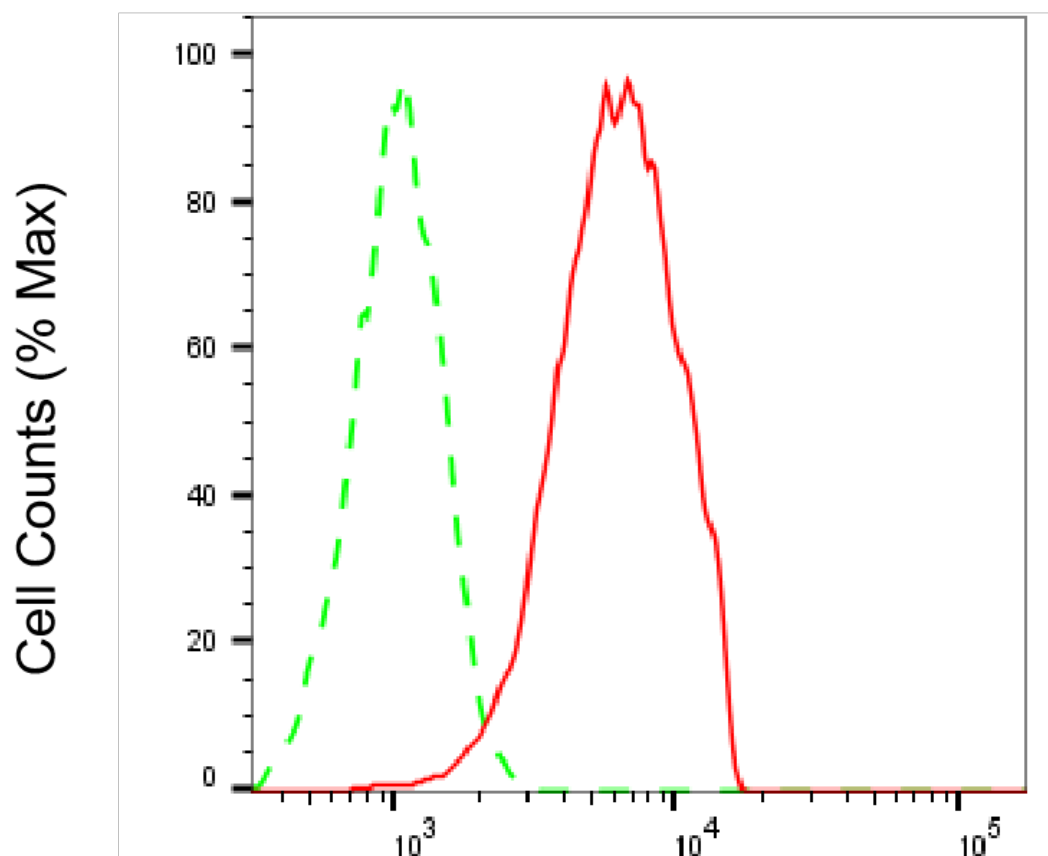
ORDERS

SALES@GENUINBIOTECH.COM
FAX: +1-540-855-7041

WWW.GENUINBIOTECH.COM

Note: This product is for research use only.

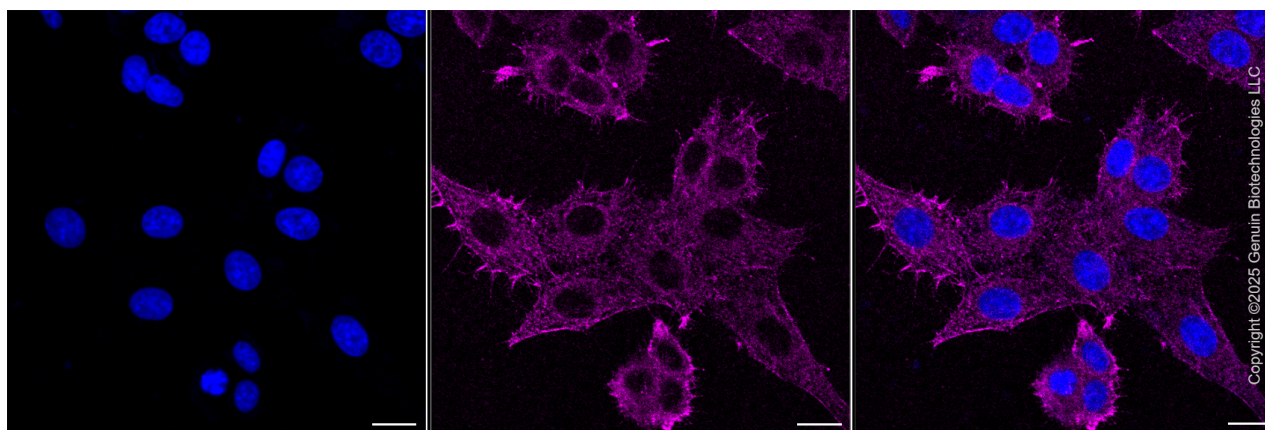
Validation Data



Copyright ©2025 Genuin Biotechnologies LLC

β -Actin-Alexa Fluor® 647

Flow cytometric analysis of β -Actin expression in HepG2 cells using anti- β -Actin antibody (Cat#3784, 1:2,000). Green, isotype control; red, β -Actin.



Copyright ©2025 Genuin Biotechnologies LLC

SUPPORT

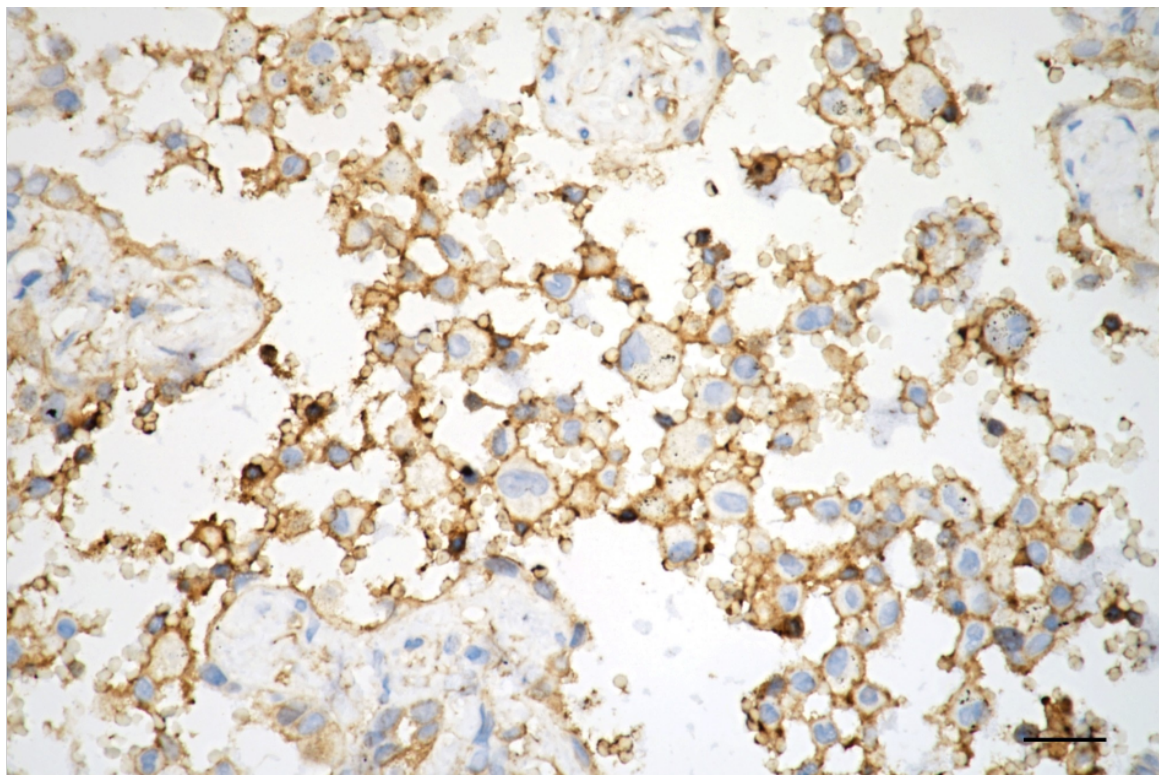
SUPPORT@GENUINBIOTECH.COM
TEL: +1-540-855-7041

ORDERS

SALES@GENUINBIOTECH.COM
FAX: +1-540-855-7041

WWW.GENUINBIOTECH.COM

Immunocytochemical staining of HepG2 cells with anti- β -Actin protein antibody (Cat#3784, 1:1,000). Nuclei were stained blue with DAPI; β -Actin was stained magenta with Alexa Fluor® 647. Images were taken using Leica stellaris 5. Protein abundance based on laser Intensity and smart gain: Low. Scale bar, 20 μ m. Permeabilization: Triton.



Copyright ©2025 Genuin Biotechnologies LLC

Immunohistochemistry was performed on paraffin-embedded human lung adenocarcinoma using anti- β -actin antibody (Cat#3784, 1:200). Antigen retrieval was done in sodium citrate buffer (pH 6.0). DAB was used for detection, with hematoxylin counterstaining. Images were acquired using a Nikon Ci-L Plus microscope (40 \times objective). Scale bar: 25 μ m.

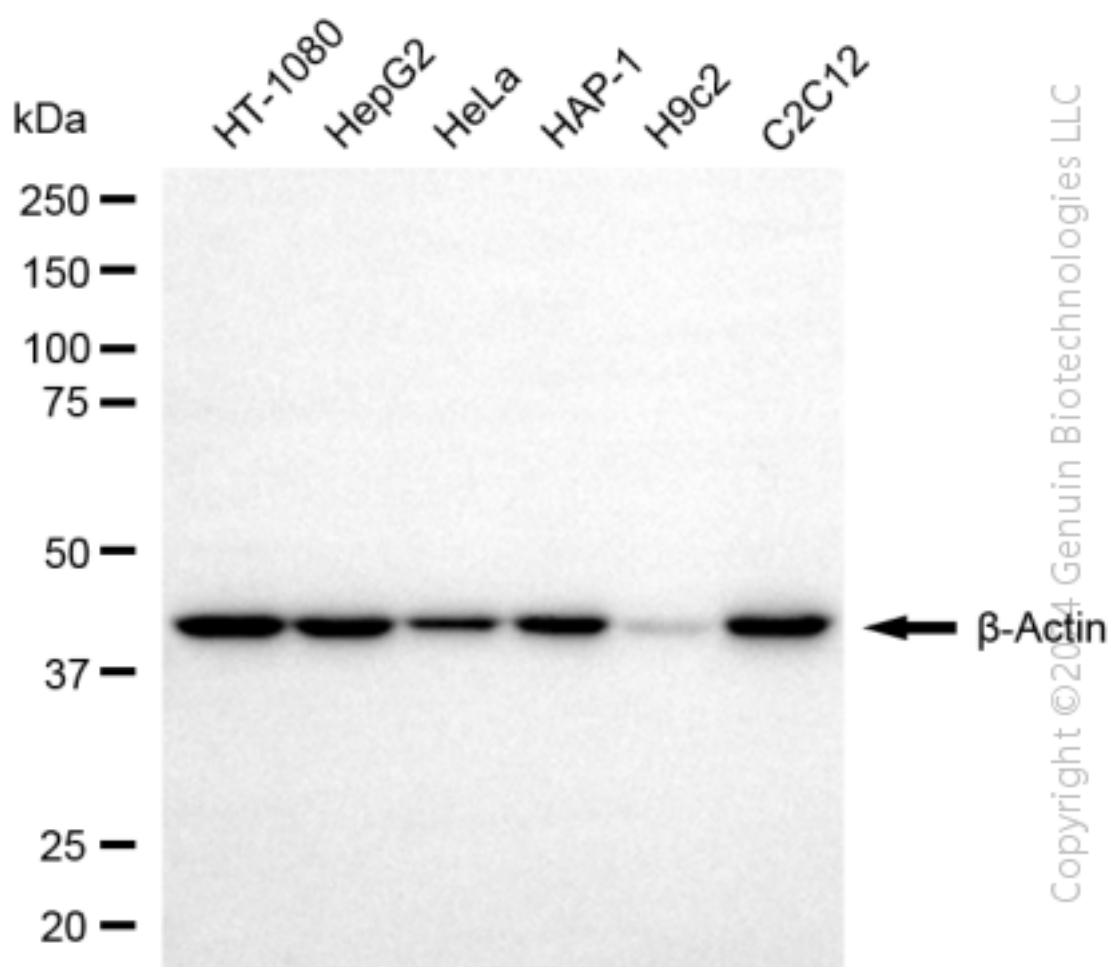
SUPPORT

SUPPORT@GENUINBIOTECH.COM
TEL: +1-540-855-7041

ORDERS

SALES@GENUINBIOTECH.COM
FAX: +1-540-855-7041

WWW.GENUINBIOTECH.COM



Western blotting analysis using anti- β -Actin antibody (Cat#3784). Total cell lysates (30 μ g) from various cell lines were loaded and separated by SDS-PAGE. The blot was incubated with anti- β -Actin antibody (Cat#3784, 1:10,000) and HRP-conjugated goat anti-mouse secondary antibody (Cat#101, 1:20,000) respectively. Image was developed using NaQTM ECL Substrate Kit (Cat#716).