

Anti-beta Tubulin Recombinant Rabbit Monoclonal Antibody



Catalog #: 3792

Aliases

TUBB; Tubulin Beta Class I; OK/SW-C1.56; Tubb5; M40; Tubulin, Beta Polypeptide; Tubulin Beta-5 Chain; Tubulin Beta Chain; MGC16435; Epididymis Secretory Sperm Binding Protein; Tubulin, Beta Class I; Class I Beta-Tubulin; Tubulin Beta-1 Chain; Beta Ib Tubulin; Beta1-Tubulin; Tubulin, Beta; CDCBM6; CSCSC1; TUBB1; TUBB5

Background

Gene Name: TUBB

NCBI Gene Entry: [203068](#)

UniProt Entry: [P07437](#)

Application Information

Molecular Weight: Predicted, 50 kDa; observed, 50 kDa

Clonality: Rabbit monoclonal antibody

Clone ID: 24GB7895

Species Reactivity: Human, mouse, rat

Applications Tested: Western blotting (WB), flow cytometry (FCM), immunocytochemistry (IC)

Immunogen

A synthesized peptide derived from human beta Tubulin

Isotype

Rabbit IgG

Storage Buffer

Supplied in PBS (pH 7.4) containing 50% glycerol, and 0.02% sodium azide.

Storage

Store at -20 °C for one year.

Recommended Dilutions

Western Blotting (WB): 1:2,000-1:10,000

Flow Cytometry (FCM): 1:2,000

Immunocytochemistry (IC): 1:100-1:1,000

SUPPORT

SUPPORT@GENUINBIOTECH.COM
TEL: +1-540-855-7041

ORDERS

SALES@GENUINBIOTECH.COM
FAX: +1-540-855-7041

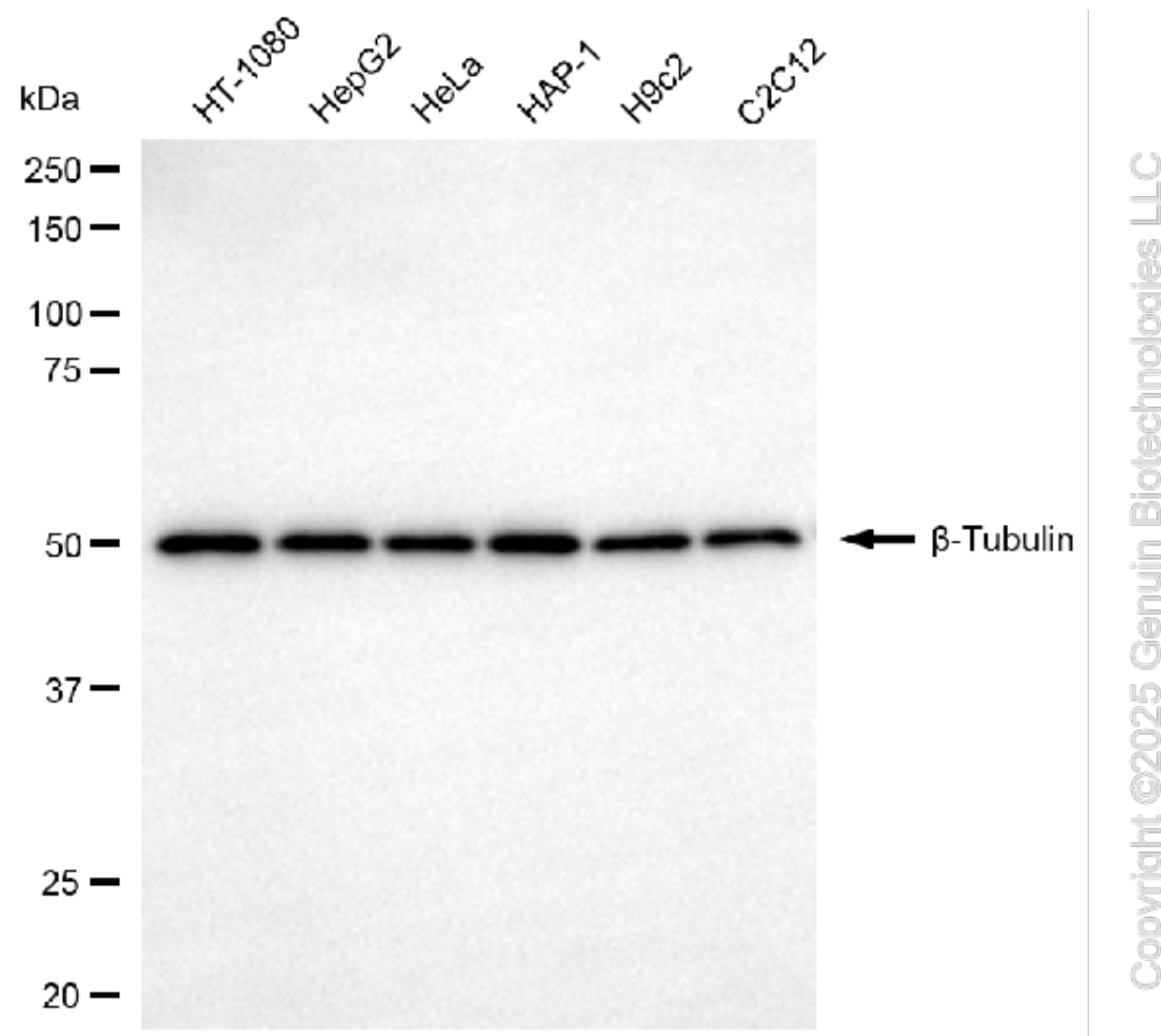
WWW.GENUINBIOTECH.COM

Anti-beta Tubulin Recombinant Rabbit Monoclonal Antibody

PAGE 2

Note: This product is for research use only.

Validation Data



Western blotting analysis using anti- β -Tubulin antibody (Cat#3792). Total cell lysates (20 μ g) from various cell lines were loaded and separated by SDS-PAGE. The blot was incubated with anti- β -Tubulin antibody (Cat#3792, 1:10,000) and HRP-conjugated goat anti-rabbit secondary antibody (Cat#201, 1:20,000) respectively. Image was developed using NaQ™ ECL Substrate Kit (Cat#716).

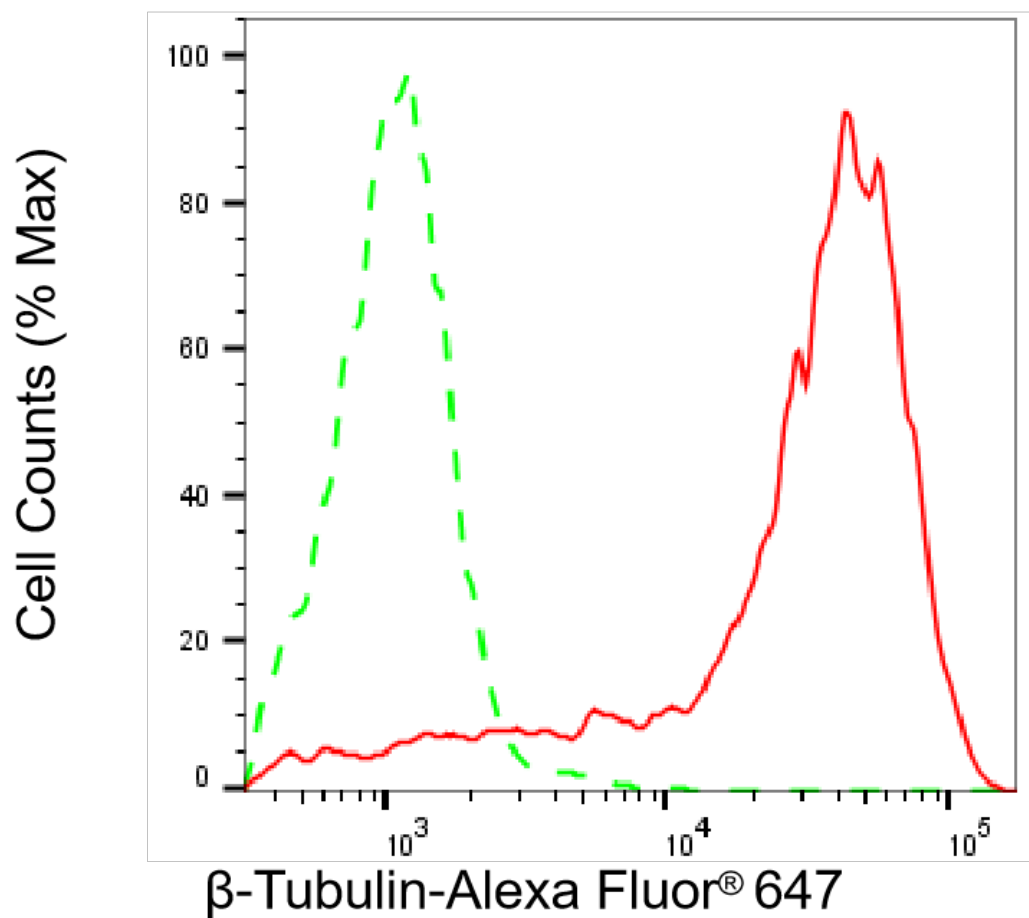
SUPPORT

SUPPORT@GENUINBIOTECH.COM
TEL: +1-540-855-7041

ORDERS

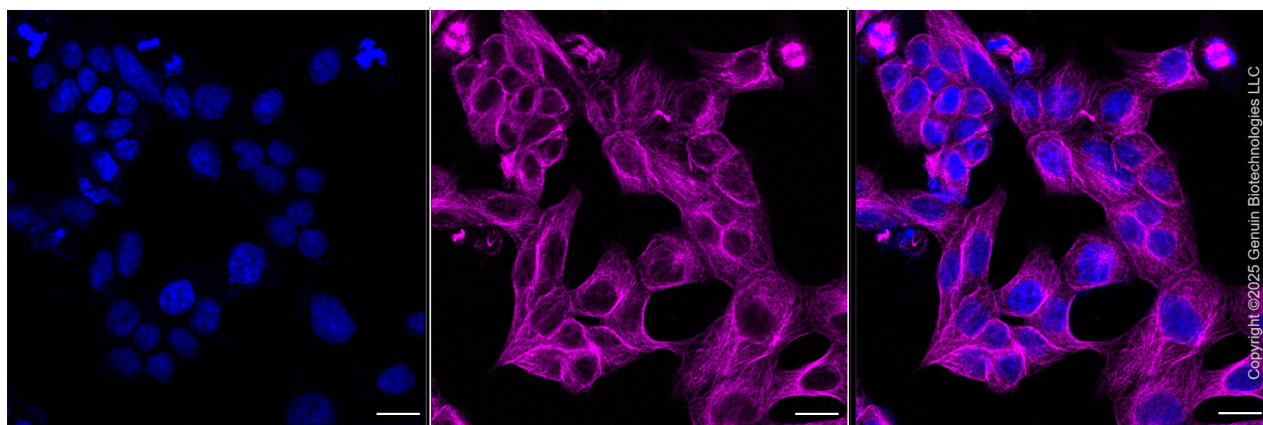
SALES@GENUINBIOTECH.COM
FAX: +1-540-855-7041

WWW.GENUINBIOTECH.COM



Copyright ©2025 Genuin Biotechnologies LLC

Flow cytometric analysis of β -Tubulin expression in HAP-1 cells using anti- β -Tubulin antibody (Cat#3792, 1:2,000). Green, isotype control; red, β -Tubulin.



Copyright ©2025 Genuin Biotechnologies LLC

Immunocytochemical staining of HAP1 cells with anti- β -Tubulin antibody (Cat#3792, 1:1,000). Nuclei were stained blue with DAPI; β -Tubulin stained magenta with Alexa Fluor® 647. Images were taken using Leica stellaris 5. Protein abundance based on laser Intensity and smart gain: High. Scale bar, 20 μ m. Permeabilization: Methanol.

SUPPORT

SUPPORT@GENUINBIOTECH.COM
TEL: +1-540-855-7041

ORDERS

SALES@GENUINBIOTECH.COM
FAX: +1-540-855-7041

WWW.GENUINBIOTECH.COM

