

# Anti-beta Actin Mouse Monoclonal Antibody, HRP Conjugated



**Catalog #: 3793-HRP**

## Aliases

ACTB; Actin Beta; Actin, Cytoplasmic 1; PS1TP5-Binding Protein 1; Beta Cytoskeletal Actin; I(2)-Actin; Beta-Actin; EC 3.6.4.-; PS1TP5BP1; B-Actin; BKRNS; BRWS1; CSMH; DDS1; THC8; BNS

## Background

Gene Name: ACTB

NCBI Gene Entry: [60](#)

UniProt Entry: [P60709](#)

## Application Information

Molecular Weight: Predicted, 42 kDa; observed, 42 kDa

Clonality: Mouse monoclonal antibody

Clone ID: 24GB7900

Species Reactivity: Human, mouse, rat

Applications Tested: Western blotting (WB), flow cytometry (FCM), immunohistochemistry (IHC)

## Immunogen

A synthesized peptide derived from human beta Actin (HRP)

## Isotype

Mouse IgG2b

## Storage Buffer

Supplied in PBS (pH 7.4) containing 50% glycerol, and 0.02% sodium azide.

## Storage

Store at -20 °C for one year.

## Recommended Dilutions

Western Blotting (WB): 1:2,000-1:10,000

Flow Cytometry (FCM): 1:2,000

Immunohistochemistry (IHC): 1:50-1:100

---

### SUPPORT

SUPPORT@GENUINBIOTECH.COM  
TEL: +1-540-855-7041

### ORDERS

SALES@GENUINBIOTECH.COM  
FAX: +1-540-855-7041

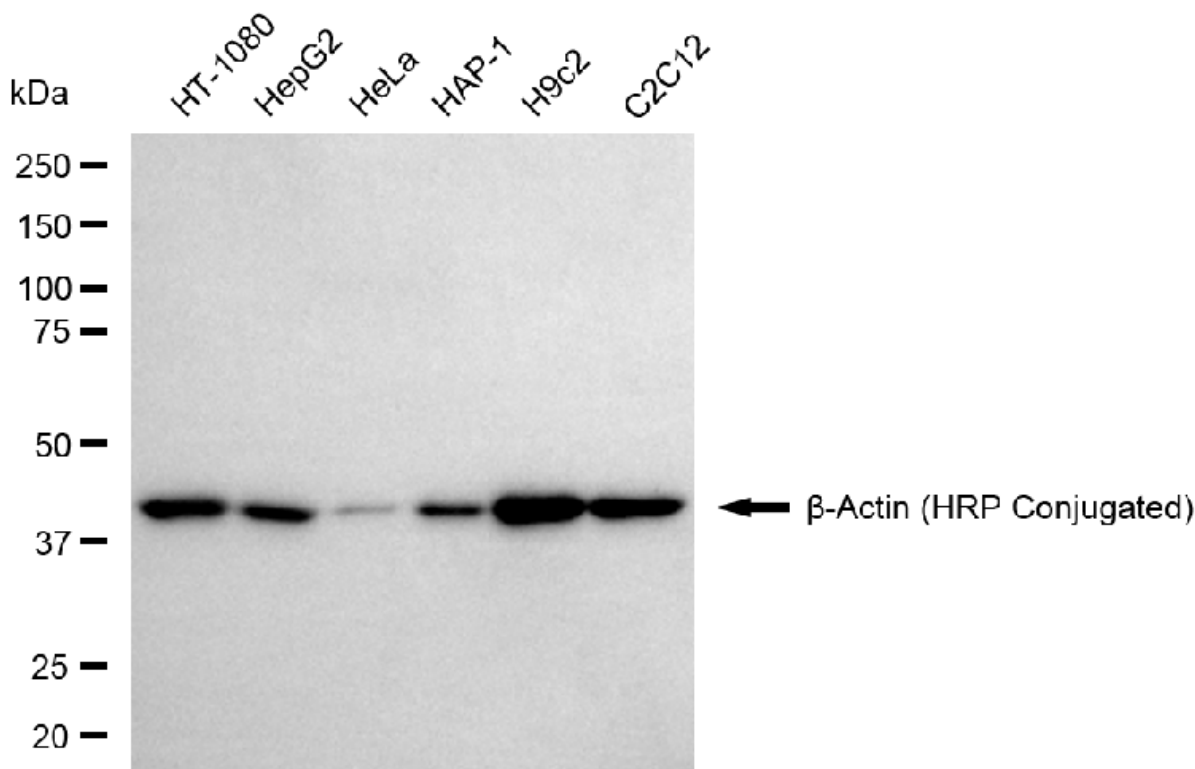
[WWW.GENUINBIOTECH.COM](http://WWW.GENUINBIOTECH.COM)

## Anti-beta Actin Mouse Monoclonal Antibody, HRP Conjugated

PAGE 2

**Note:** This product is for research use only.

### Validation Data



Copyright ©2025 Genuin Biotechnologies LLC

Western blotting analysis using anti- $\beta$ -Actin (HRP Conjugated) antibody (Cat#3793-HRP, 1:10,000). Total cell lysates (30  $\mu$ g) from various cell lines were loaded and separated by SDS-PAGE. Image was developed using NaQ™ ECL Substrate Kit (Cat#716).

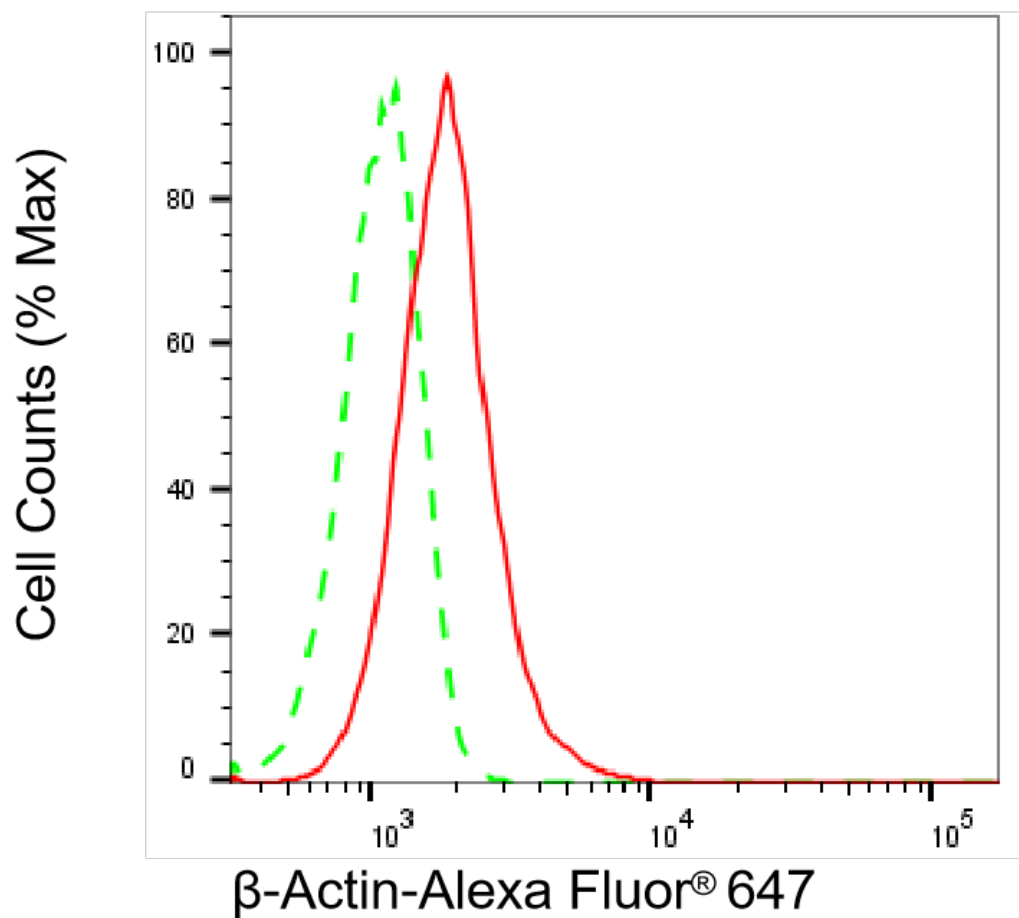
#### SUPPORT

SUPPORT@GENUINBIOTECH.COM  
TEL: +1-540-855-7041

#### ORDERS

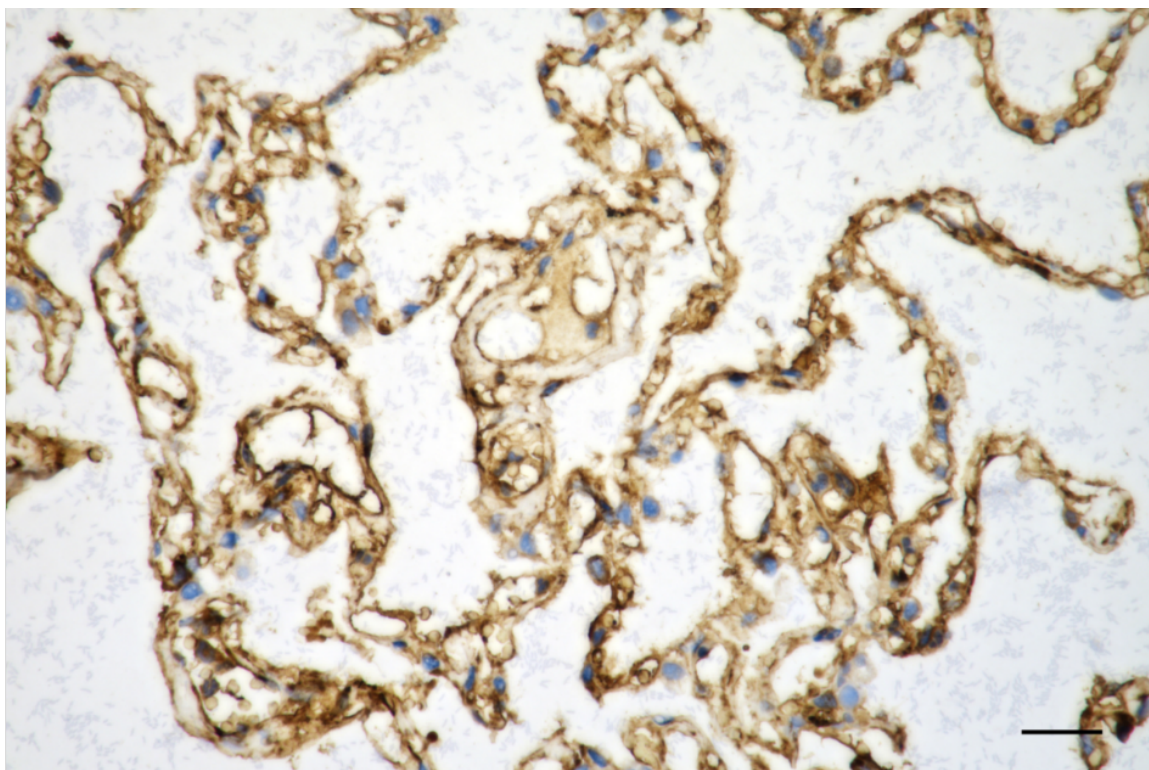
SALES@GENUINBIOTECH.COM  
FAX: +1-540-855-7041

WWW.GENUINBIOTECH.COM



Copyright ©2025 Genuin Biotechnologies LLC

Flow cytometric analysis of  $\beta$ -Actin expression in H9c2 cells using anti- $\beta$ -Actin antibody (Cat#3793-HRP, 1:2,000). Green, isotype control; red,  $\beta$ -Actin.



Copyright ©2025 Genuin Biotechnologies LLC

Immunohistochemistry was performed on paraffin-embedded human lung adenocarcinoma using anti- $\beta$ -actin (HRP Conjugated) antibody (Cat#3793-HRP, 1:100). Antigen retrieval was done in sodium citrate buffer (pH 6.0). DAB was used for detection, with hematoxylin counterstaining. Images were acquired using a Nikon Ci-L Plus microscope (40 $\times$  objective). Scale bar: 25  $\mu$ m.