

Catalog #: 3807

Aliases

BMP1; Bone Morphogenetic Protein 1; BMP-1; PCOLC; Procollagen C-Endopeptidase; Mammalian Tolloid Protein; Tolloid-Like; EC 3.4.24.19; PCP; Procollagen C-Proteinase 3; Procollagen C-Proteinase; EC 3.4.24; OI13; PCP2; MTld; TLD

Background

Gene Name: BMP1

NCBI Gene Entry: [649](#)

UniProt Entry: [P13497](#)

Application Information

Molecular Weight: Predicted, 111 kDa; observed, 111 kDa

Clonality: Mouse monoclonal antibody

Clone ID: 24GB7970

Species Reactivity: Mouse, rat

Applications Tested: Western blotting (WB), flow cytometry (FCM), immunocytochemistry (IC)

Immunogen

Recombinant protein of human BMP1

Isotype

Mouse IgG1

Storage Buffer

Supplied in PBS (pH 7.4) containing 50% glycerol, and 0.02% sodium azide.

Storage

Store at -20 °C for one year.

Recommended Dilutions

Western Blotting (WB): 1:2,500-1:5,000

Flow Cytometry (FCM): 1:2,000

Immunocytochemistry (IC): 1:100-1:1,000

Note: This product is for research use only.

SUPPORT

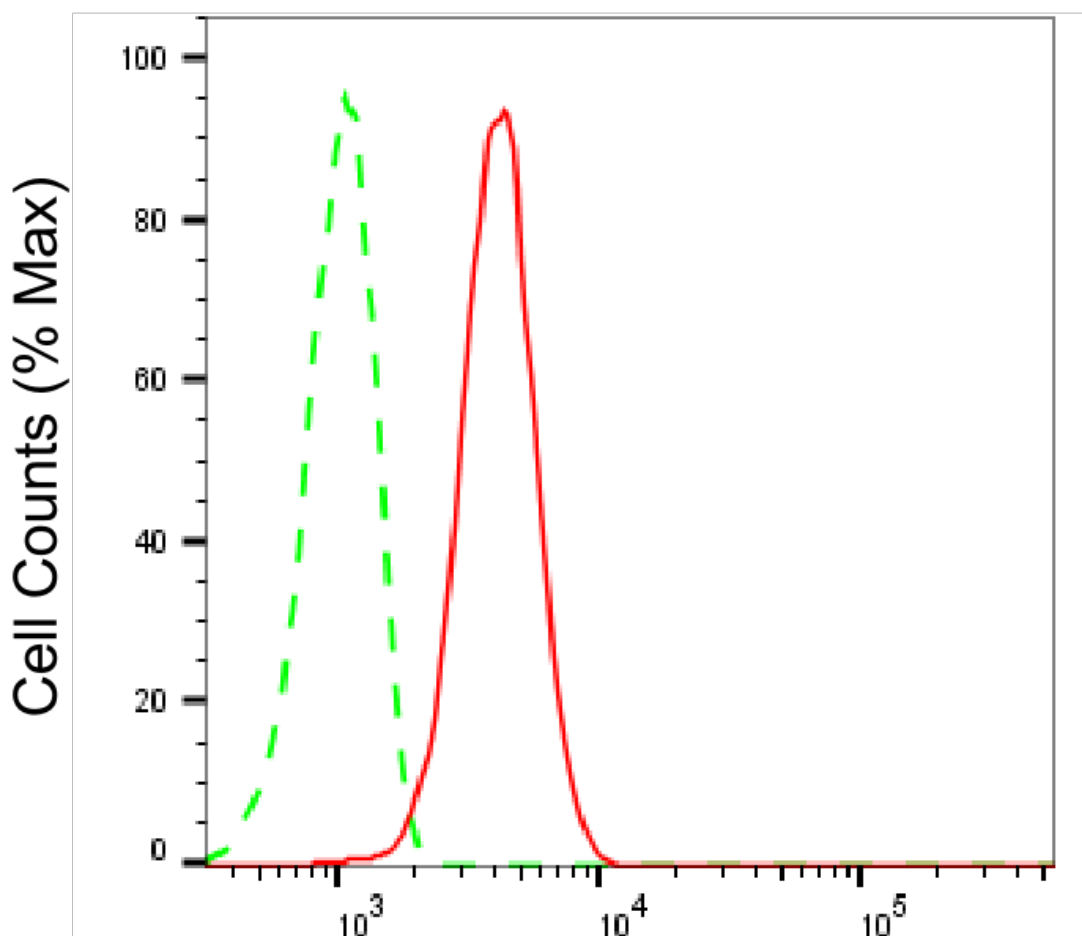
SUPPORT@GENUINBIOTECH.COM
TEL: +1-540-855-7041

ORDERS

SALES@GENUINBIOTECH.COM
FAX: +1-540-855-7041

WWW.GENUINBIOTECH.COM

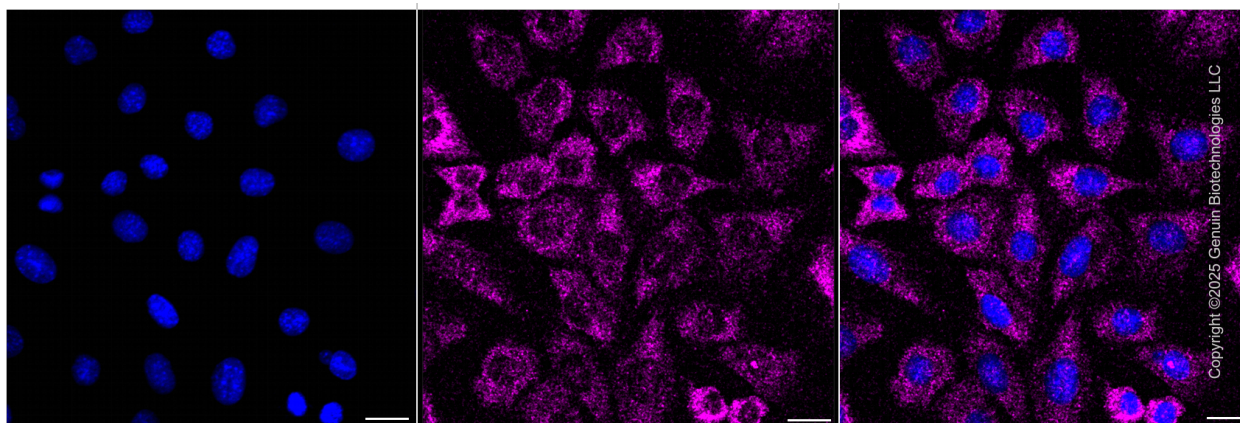
Validation Data



Copyright ©2025 Genuin Biotechnologies LLC

Bone morphogenetic protein 1-Alexa Fluor® 647

Flow cytometric analysis of Bone morphogenetic protein 1 expression in C2C12 cells using anti-Bone morphogenetic protein 1 antibody (Cat#3807, 1:2,000). Green, isotype control; red, Bone morphogenetic protein 1.



Copyright ©2025 Genuin Biotechnologies LLC

SUPPORT

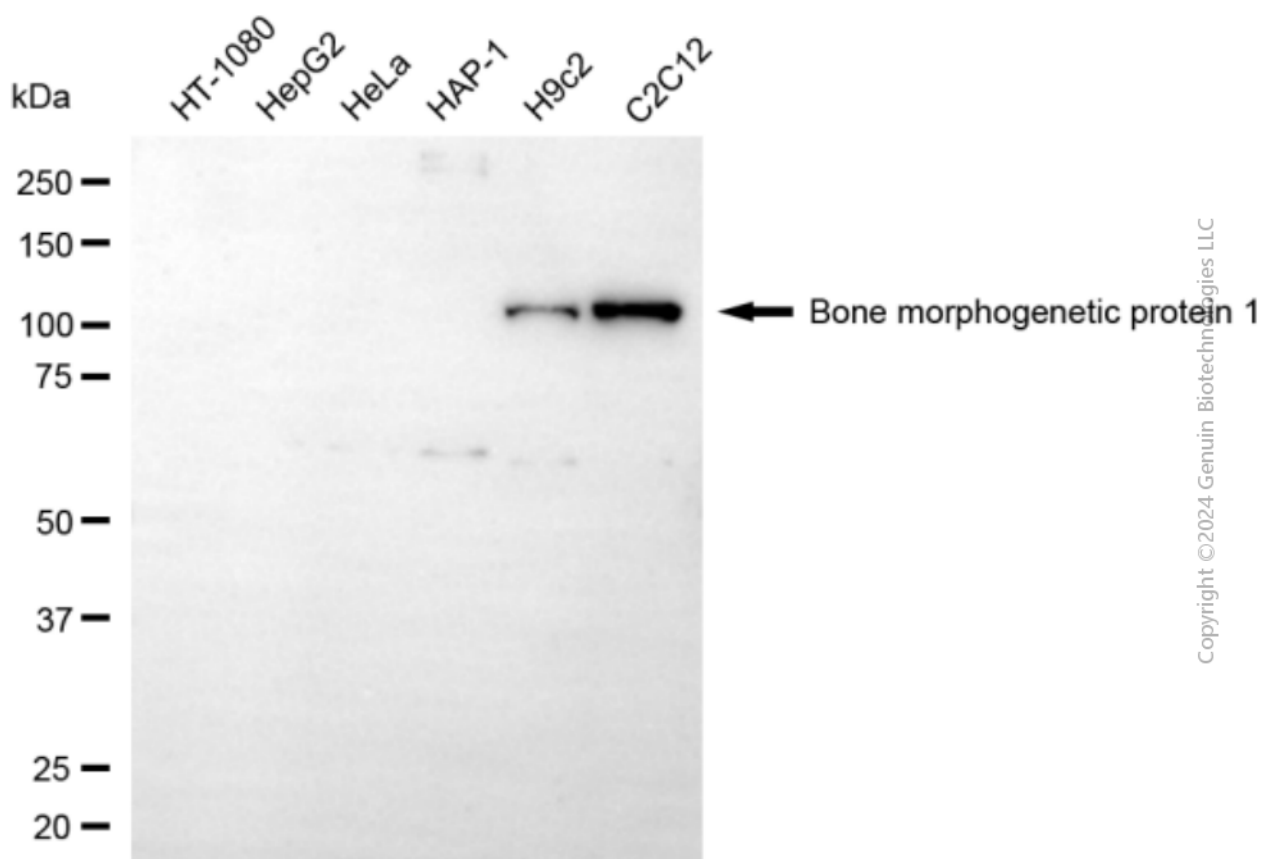
SUPPORT@GENUINBIOTECH.COM
TEL: +1-540-855-7041

ORDERS

SALES@GENUINBIOTECH.COM
FAX: +1-540-855-7041

WWW.GENUINBIOTECH.COM

Immunocytochemical staining of C2C12 cells with anti-Bone morphogenetic protein 1 antibody (Cat#3807, 1:500) . Nuclei were stained blue with DAPI; Bone morphogenetic protein 1 was stained magenta with Alexa Fluor® 647. Images were taken using Leica stellaris 5. Protein abundance based on laser Intensity and smart gain: Low. Scale bar, 20 μ m.



Western blotting analysis using anti-bone morphogenetic protein 1 antibody (Cat#3807). Total cell lysates (30 μ g) from various cell lines were loaded and separated by SDS-PAGE. The blot was incubated with anti-bone morphogenetic protein 1 antibody (Cat#3807, 1:5,000) and HRP-conjugated goat anti-mouse secondary antibody (Cat#101, 1:20,000) respectively. Image was developed using FeQ™ ECL Substrate Kit (Cat#226).