

Catalog #: 3821

Aliases

CNOT2; CCR4-NOT Transcription Complex Subunit 2; CDC36; NOT2H; NOT2; CC Chemokine Receptor 4-Negative Regulator Of Transcription 2; CCR4-Associated Factor 2; CCR4-NOT Transcription Complex, Subunit 2; Negative Regulator Of Transcription 2; HSPC131; IDNADFS

Background

Gene Name: CNOT2

NCBI Gene Entry: [4848](#)

UniProt Entry: [Q9NZN8](#)

Application Information

Molecular Weight: Predicted, 60 kDa; observed, 60 kDa

Clonality: Mouse monoclonal antibody

Clone ID: 24GB8040

Species Reactivity: Human, mouse, rat

Applications Tested: Western blotting (WB), flow cytometry (FCM), immunocytochemistry (IC)

Immunogen

Recombinant protein of human CNOT2

Isotype

Mouse IgG2b

Storage Buffer

Supplied in PBS (pH 7.4) containing 50% glycerol, and 0.02% sodium azide.

Storage

Store at -20 °C for one year.

Recommended Dilutions

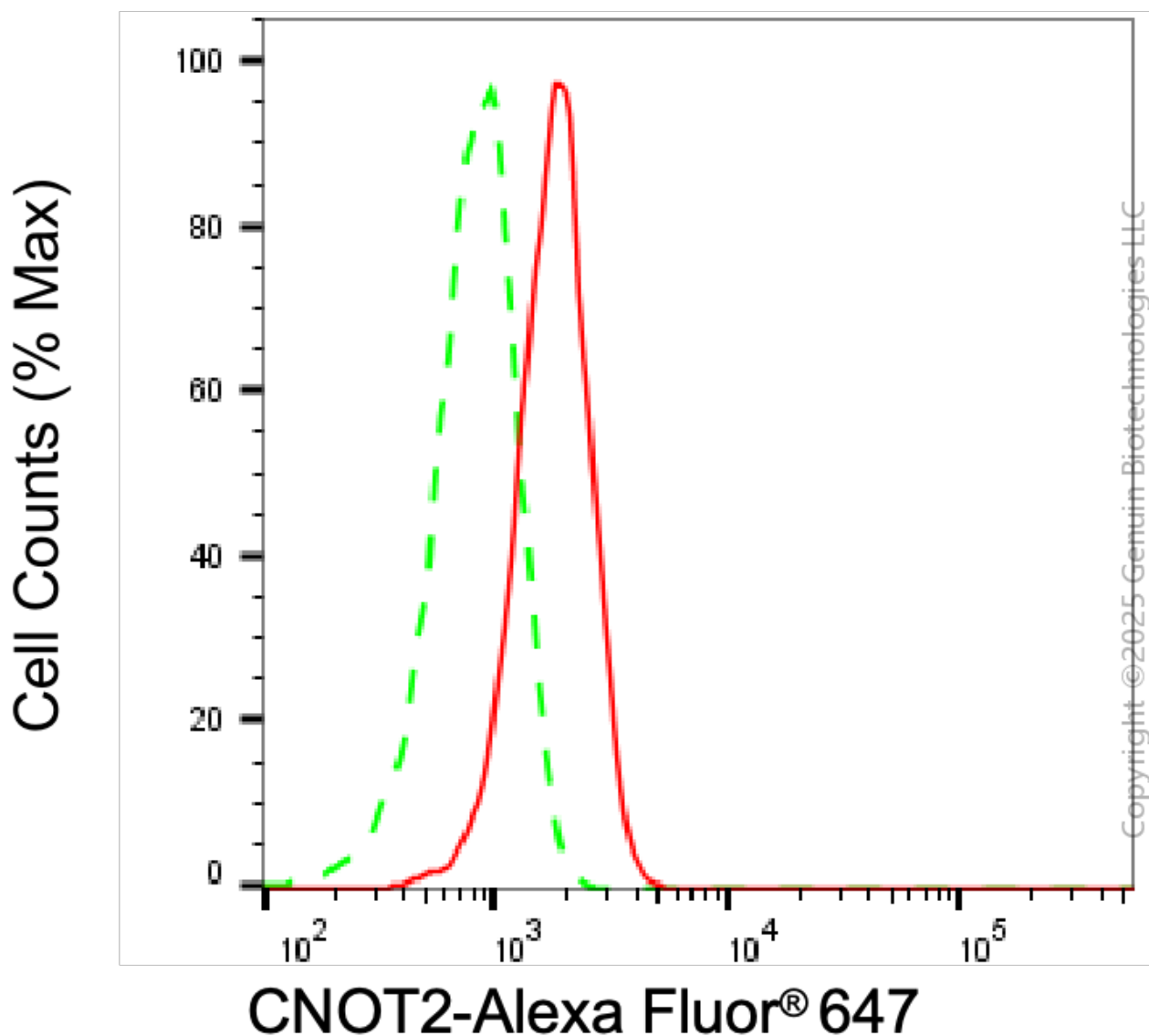
Western Blotting (WB): 1:2,500-1:5,000

Flow Cytometry (FCM): 1:1,000

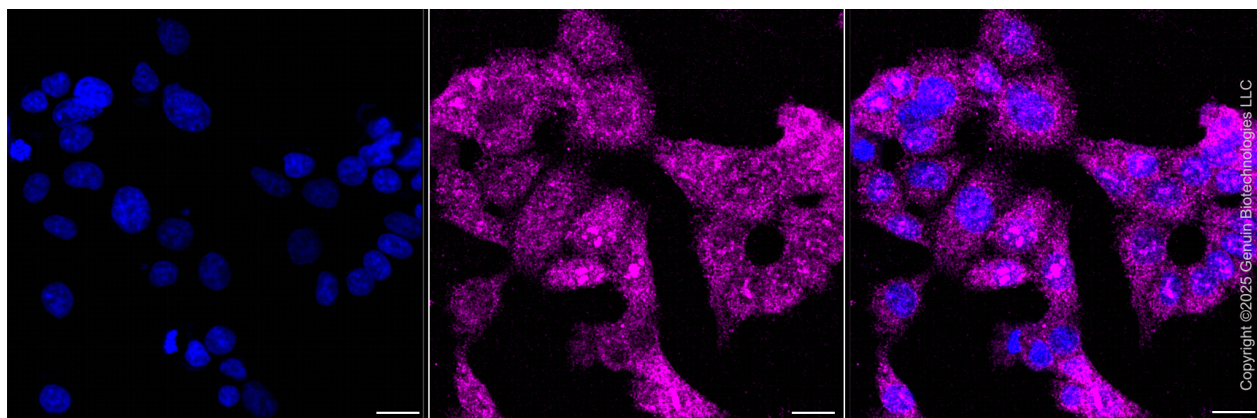
Immunocytochemistry (IC): 1:100-1:1,000

Note: This product is for research use only.

Validation Data



Flow cytometric analysis of CNOT2 expression in HAP-1 cells using anti-CNOT2 antibody (Cat#3821, 1:1,000). Green, isotype control; red, CNOT2.



SUPPORT

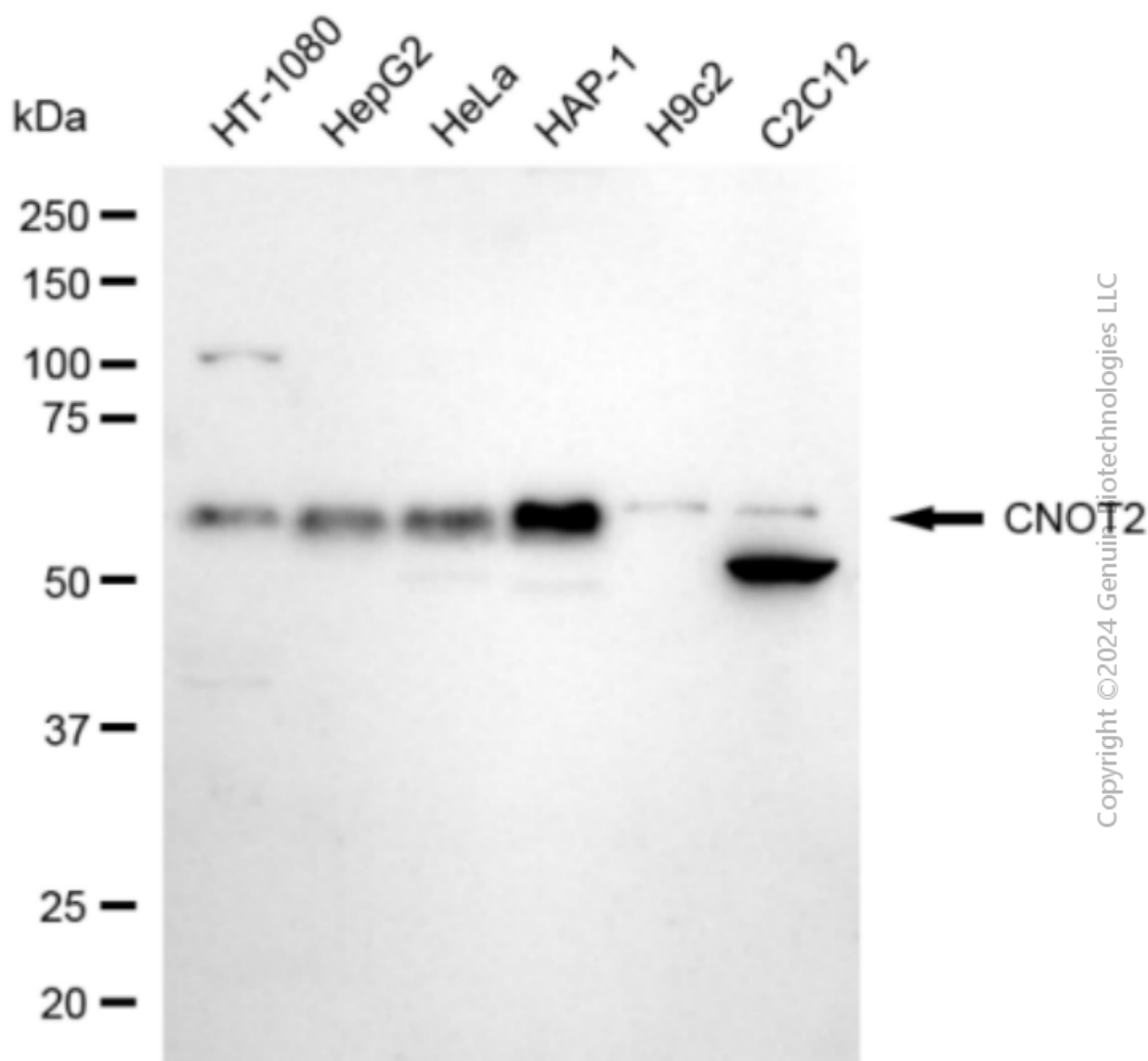
SUPPORT@GENUINBIOTECH.COM
TEL: +1-540-855-7041

ORDERS

SALES@GENUINBIOTECH.COM
FAX: +1-540-855-7041

WWW.GENUINBIOTECH.COM

Immunocytochemical staining of HAP1 cells with anti-CNOT2 antibody (Cat#3821, 1:500). Nuclei were stained blue with DAPI; CNOT2stained magenta with Alexa Fluor® 647. Images were taken using Leica stellaris 5. Protein abundance based on laser Intensity and smart gain: Low. Scale bar, 20 µm.



Western blotting analysis using anti-CNOT2 antibody (Cat#3821). Total cell lysates (30 µg) from various cell lines were loaded and separated by SDS-PAGE. The blot was incubated with anti-CNOT2 antibody (Cat#3821, 1:5,000) and HRP-conjugated goat anti-mouse secondary antibody (Cat#101, 1:20,000) respectively. Image was developed using FeQ™ ECL Substrate Kit (Cat#226).