

## Catalog #: 3823

### Aliases

C17orf58; Chromosome 17 Open Reading Frame 58; UPF0450 Protein C17orf58

### Background

Gene Name: C17orf58

NCBI Gene Entry: [284018](#)

UniProt Entry: [Q2M2W7](#)

### Application Information

Molecular Weight: Predicted, 37 kDa; observed, 35kDa

Clonality: Mouse monoclonal antibody

Clone ID: 24GB8050

Species Reactivity: Human, mouse

Applications Tested: Western blotting (WB), immunocytochemistry (IC), flow cytometry (FCM)

### Immunogen

Recombinant protein of human C17orf58

### Isotype

Mouse IgG2b

### Storage Buffer

Supplied in PBS (pH 7.4) containing 50% glycerol, and 0.02% sodium azide.

### Storage

Store at -20 °C for one year.

### Recommended Dilutions

Western Blotting (WB): 1:1,000-1:5,000

Immunohistochemistry (IHC): 1:100-1:1,000

Flow Cytometry (FCM) : 1:2,000

**Note:** This product is for research use only.

### Validation Data

---

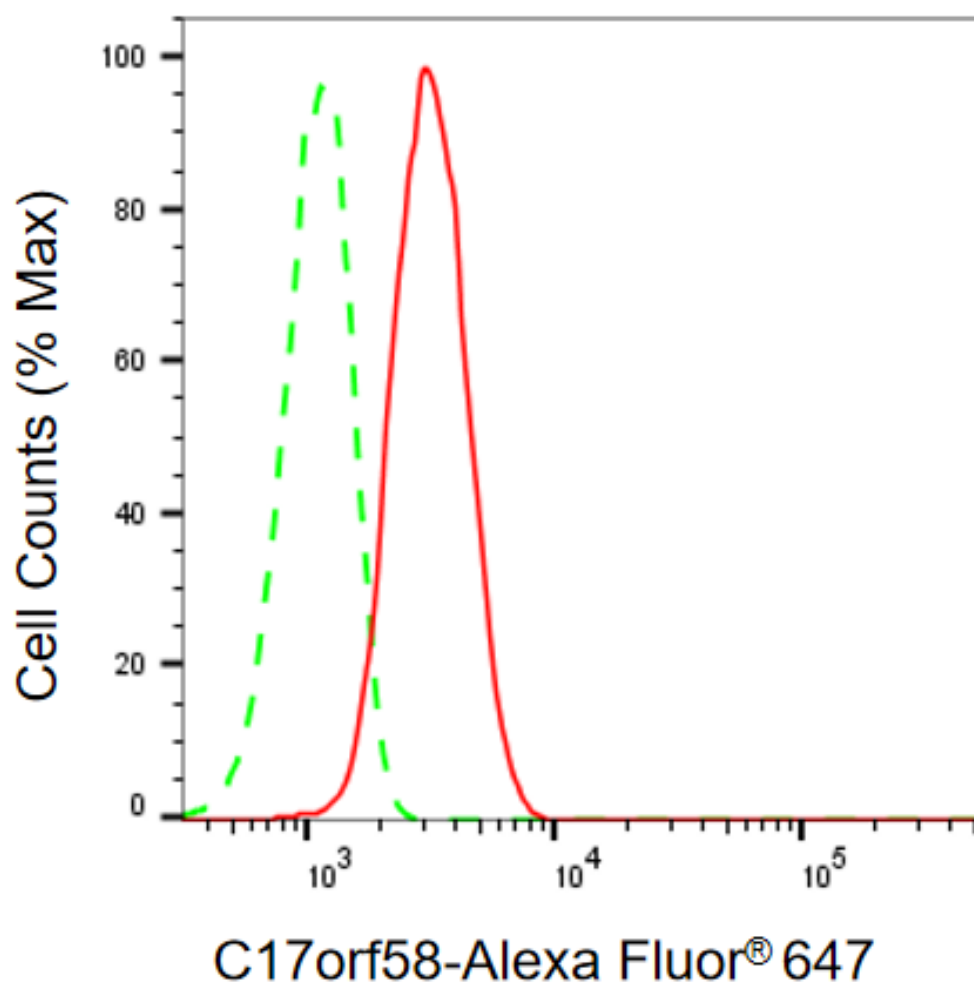
#### SUPPORT

SUPPORT@GENUINBIOTECH.COM  
TEL: +1-540-855-7041

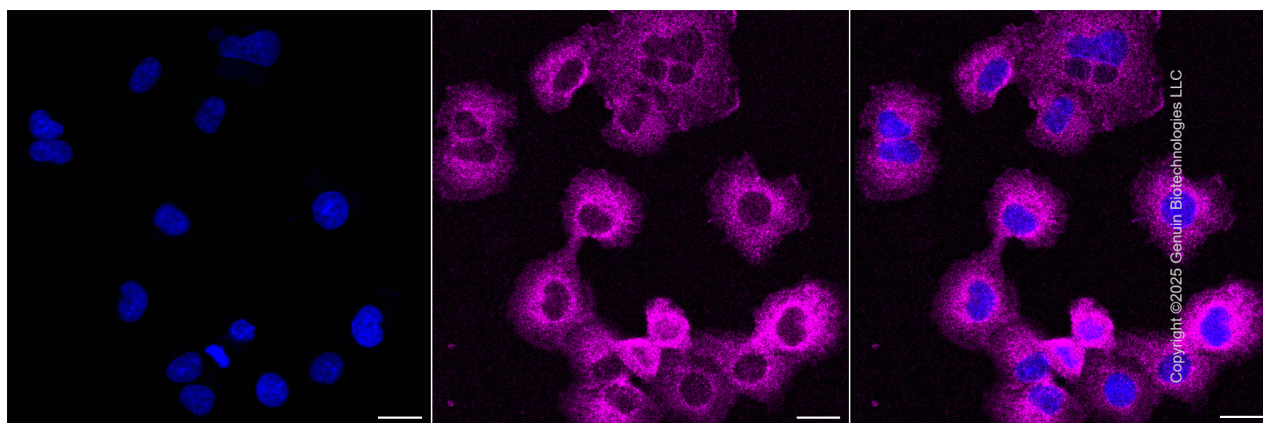
#### ORDERS

SALES@GENUINBIOTECH.COM  
FAX: +1-540-855-7041

[WWW.GENUINBIOTECH.COM](http://WWW.GENUINBIOTECH.COM)



Flow cytometric analysis of C17orf58 expression in HT-1080 cells using anti-C17orf58 antibody (Cat#3823, 1:1,000). Green, isotype control; red, C17orf58.



Immunocytochemical staining of HT-1080 cells with anti-C17orf58 associated protein antibody

**SUPPORT**

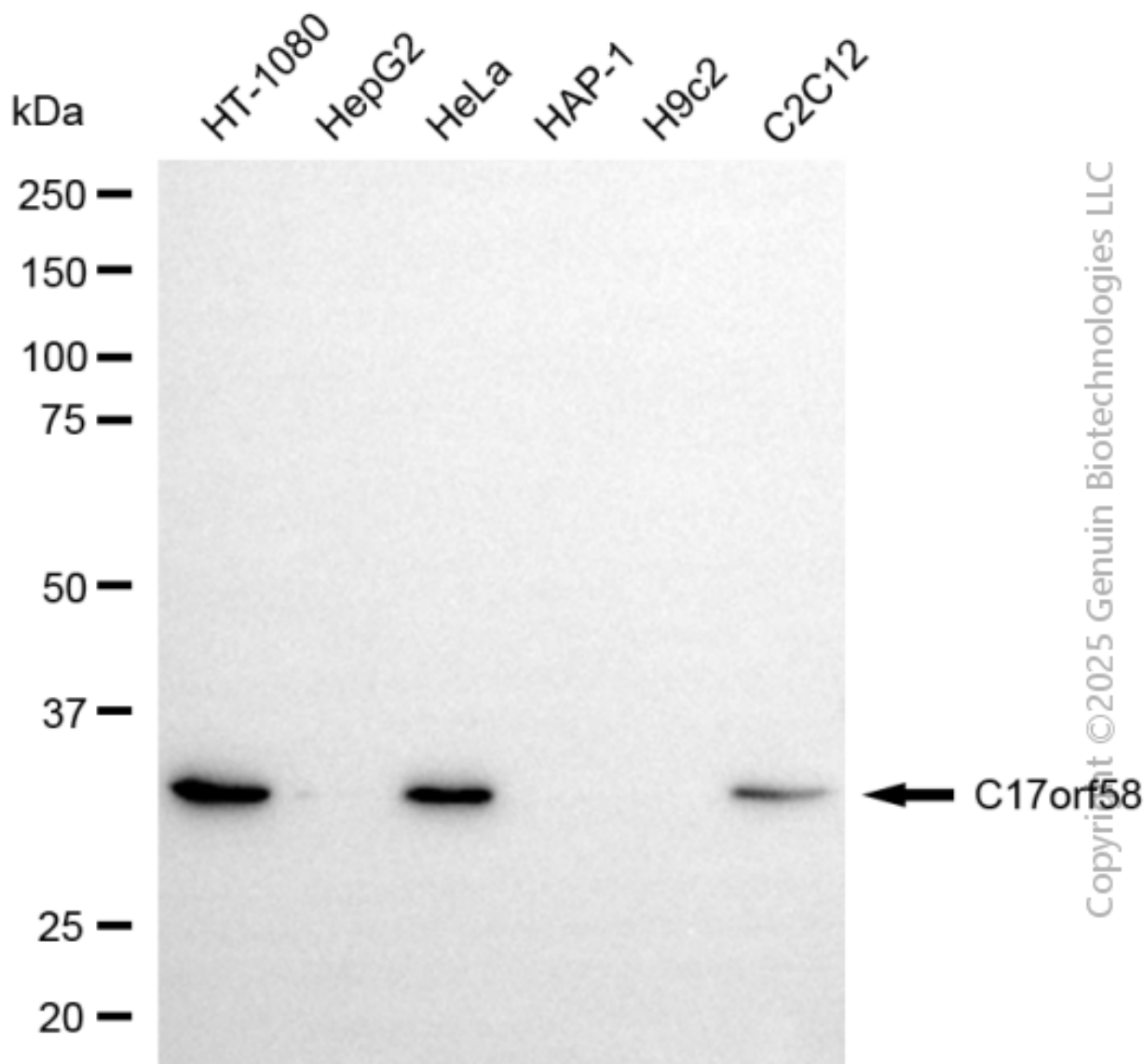
SUPPORT@GENUINBIOTECH.COM  
TEL: +1-540-855-7041

**ORDERS**

SALES@GENUINBIOTECH.COM  
FAX: +1-540-855-7041

[WWW.GENUINBIOTECH.COM](http://WWW.GENUINBIOTECH.COM)

(Cat#3823, 1:1,000) . Nuclei were stained blue with DAPI; C17orf58 associated protein was stained magenta with Alexa Fluor® 647. Images were taken using Leica stellaris 5. Protein abundance based on laser Intensity and smart gain: Low. Scale bar, 20  $\mu$ m.



Western blotting analysis using anti-C17orf58 antibody (Cat#3823). Total cell lysates (30  $\mu$ g) from various cell lines were loaded and separated by SDS-PAGE. The blot was incubated with anti-C17orf58 antibody (Cat#3823, 1:5,000) and HRP-conjugated goat anti-mouse secondary antibody (Cat#101, 1:20,000) respectively. Image was developed using NaQ™ ECL Substrate Kit (Cat#716).