

## Catalog #: 3830

### Aliases

CABLES1; Cdk5 And Abl Enzyme Substrate 1; HsT2563; CDK5 And ABL1 Enzyme Substrate 1; Interactor With CDK3 1; FLJ35924; CABLES; CABL1; IK3-1; Ik3-1

### Background

Gene Name: CABLES1

NCBI Gene Entry: [91768](#)

UniProt Entry: [Q8TDN4](#)

### Application Information

Molecular Weight: Predicted, 68 kDa; observed, 74 kDa

Clonality: Mouse monoclonal antibody

Clone ID: 24GB8085

Species Reactivity: Human

Applications Tested: Western blotting (WB)

### Immunogen

Recombinant protein of human CABLES1

### Isotype

Mouse IgG1

### Storage Buffer

Supplied in PBS (pH 7.4) containing 50% glycerol, and 0.02% sodium azide.

### Storage

Store at -20 °C for one year.

### Recommended Dilutions

Western Blotting (WB): 1:200-1:1,000

**Note:** This product is for research use only.

### Validation Data

---

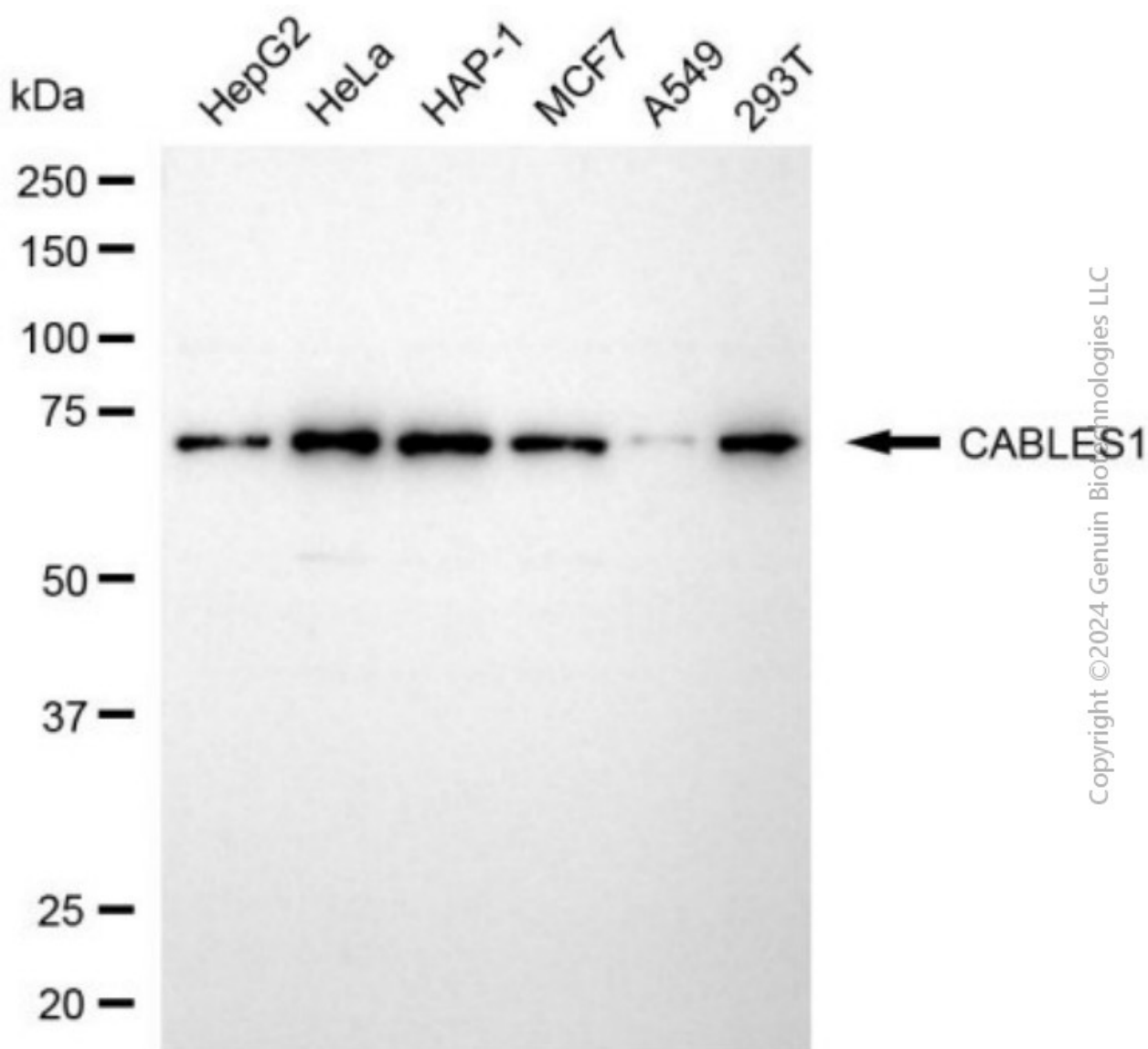
#### SUPPORT

SUPPORT@GENUINBIOTECH.COM  
TEL: +1-540-855-7041

#### ORDERS

SALES@GENUINBIOTECH.COM  
FAX: +1-540-855-7041

[WWW.GENUINBIOTECH.COM](http://WWW.GENUINBIOTECH.COM)



Copyright ©2024 Genuin Biotechnologies LLC

Western blotting analysis using anti-CABLES1 antibody (Cat#3830). Total cell lysates (30 µg) from various cell lines were loaded and separated by SDS-PAGE. The blot was incubated with anti-CABLES1 antibody (Cat#3830, 1:1,000) and HRP-conjugated goat anti-mouse secondary antibody (Cat#101, 1:20,000) respectively. Image was developed using NaQ™ ECL Substrate Kit (Cat#716).

## SUPPORT

SUPPORT@GENUINBIOTECH.COM  
TEL: +1-540-855-7041

## ORDERS

SALES@GENUINBIOTECH.COM  
FAX: +1-540-855-7041

[WWW.GENUINBIOTECH.COM](http://WWW.GENUINBIOTECH.COM)