

Catalog #: 3831

Aliases

CHCHD10; Coiled-Coil-Helix-Coiled-Coil-Helix Domain Containing 10; C22orf16; N27C7-4; MIX17A; Coiled-Coil-Helix-Coiled-Coil-Helix Domain-Containing Protein 10, Mitochondrial; MIX17 Homolog A; Chromosome 22 Open Reading Frame 16; Protein N27C7-4; FTDALS2; IMMD; SMAJ

Background

Gene Name: CHCHD10

NCBI Gene Entry: [400916](#)

UniProt Entry: [Q8WYQ3](#)

Application Information

Molecular Weight: Predicted, 14 kDa; observed, 18 kDa

Clonality: Mouse monoclonal antibody

Clone ID: 24GB8090

Species Reactivity: Human

Applications Tested: Western blotting (WB), flow cytometry (FCM), immunocytochemistry (IC)

Immunogen

Recombinant protein of human CHCHD10

Isotype

Mouse IgG1

Storage Buffer

Supplied in PBS (pH 7.4) containing 50% glycerol, and 0.02% sodium azide.

Storage

Store at -20 °C for one year.

Recommended Dilutions

Western Blotting (WB): 1:500-1:1,000

Flow Cytometry (FCM): 1:2,000

Immunocytochemistry (IC): 1:100-1:1,000

SUPPORT

SUPPORT@GENUINBIOTECH.COM
TEL: +1-540-855-7041

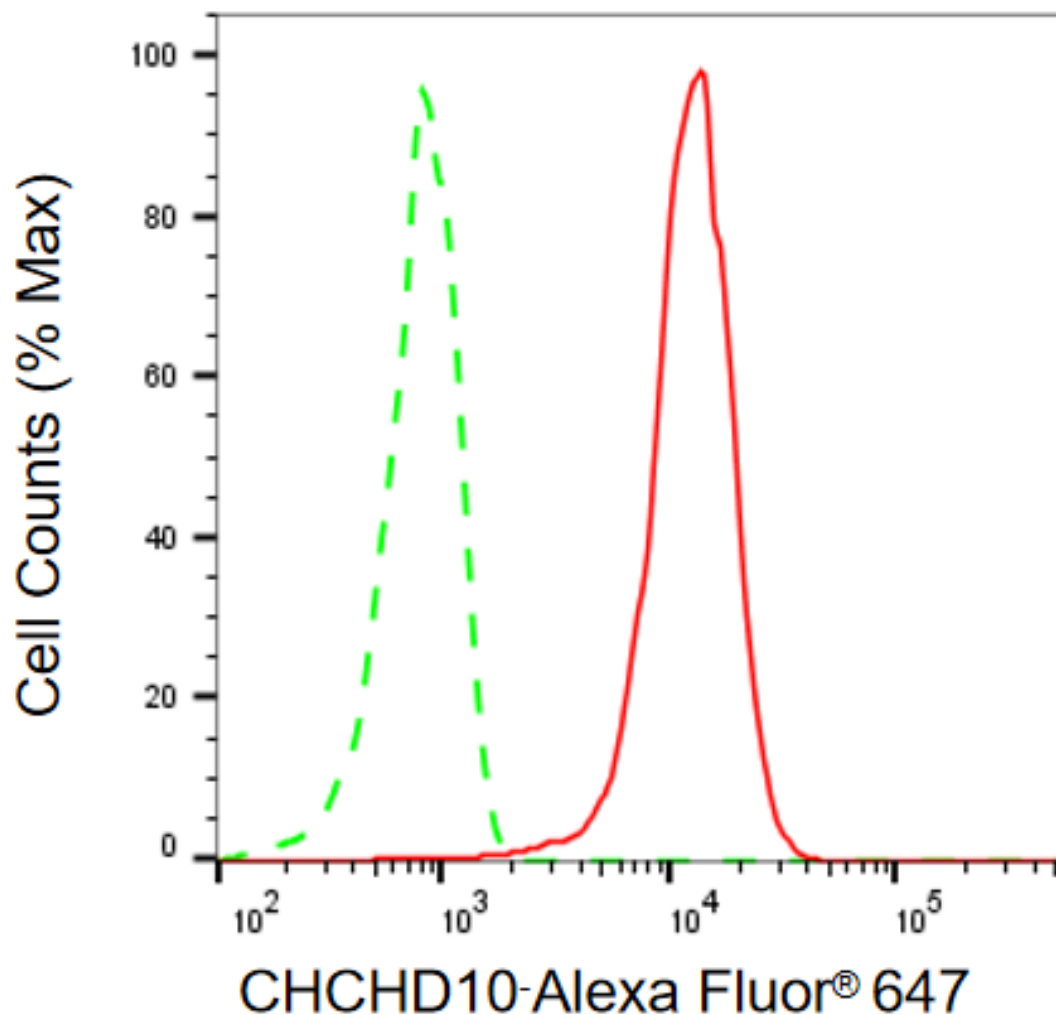
ORDERS

SALES@GENUINBIOTECH.COM
FAX: +1-540-855-7041

WWW.GENUINBIOTECH.COM

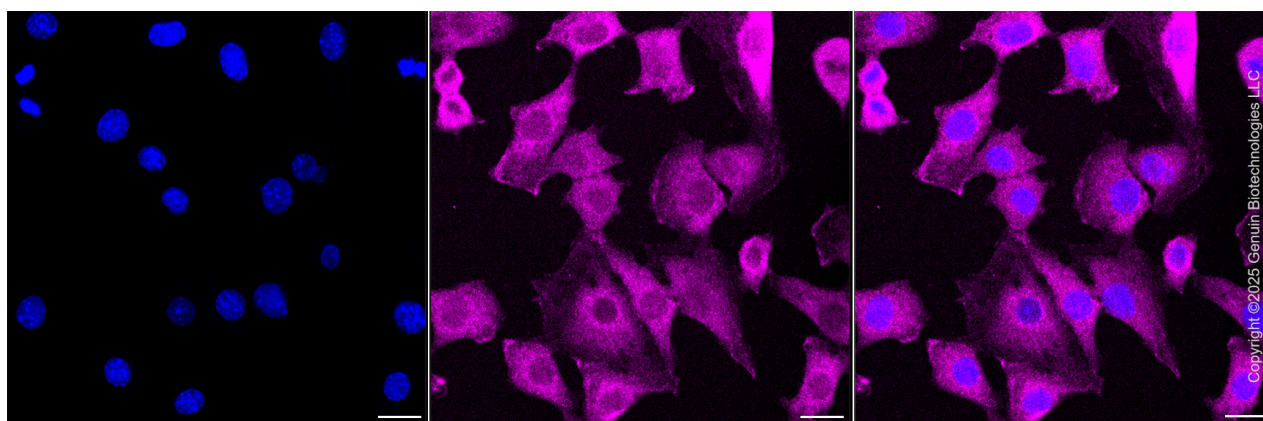
Note: This product is for research use only.

Validation Data



Copyright ©2025 Genuin Biotechnologies LLC

Flow cytometric analysis of CHCHD10 expression in HeLa cells using anti-CHCHD10 antibody (Cat#3831, 1:1,000). Green, isotype control; red, CHCHD10.



Copyright ©2025 Genuin Biotechnologies LLC

SUPPORT

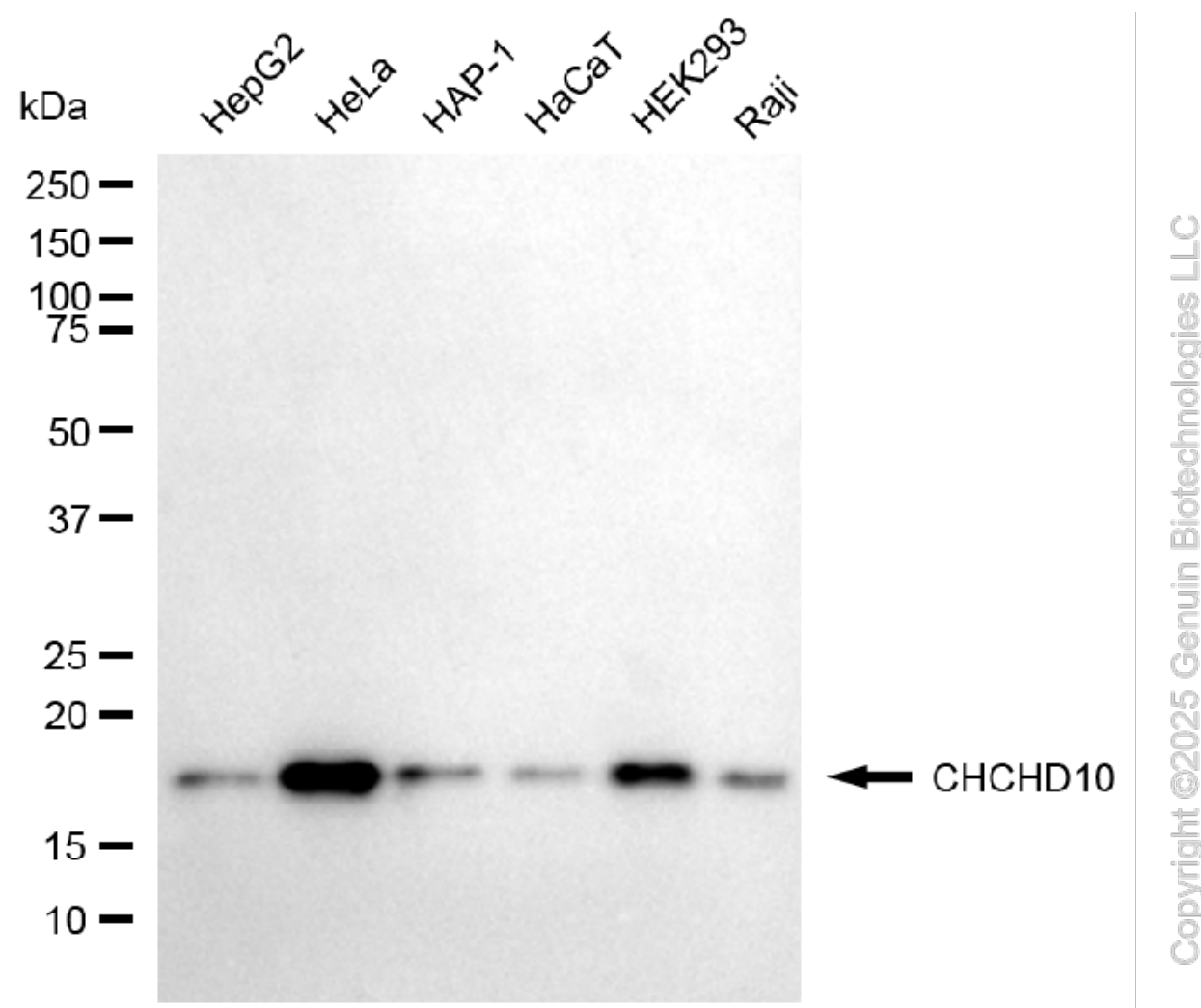
SUPPORT@GENUINBIOTECH.COM
TEL: +1-540-855-7041

ORDERS

SALES@GENUINBIOTECH.COM
FAX: +1-540-855-7041

WWW.GENUINBIOTECH.COM

Immunocytochemical staining of HepG2 cells with anti-CHCHD10 antibody (Cat#3831, 1:1,000). Nuclei were stained blue with DAPI; CHCHD10 was stained magenta with Alexa Fluor® 647. Images were taken using Leica stellaris 5. Protein abundance based on laser Intensity and smart gain: High. Scale bar, 20 µm.



Western blotting analysis using anti-CHCHD10 antibody (Cat#3831). Total cell lysates (30 µg) from various cell lines were loaded and separated by SDS-PAGE. The blot was incubated with anti-CHCHD10 antibody (Cat#3831, 1:1,000) and HRP-conjugated goat anti-mouse secondary antibody (Cat#101, 1:20,000) respectively. Image was developed using FeQ™ ECL Substrate Kit (Cat#226).