

Catalog #: 3832

Aliases

CD244; CD244 Molecule; NKR2B4; SLAMF4; NAIL; 2B4; Natural Killer Cell Receptor 2B4; Nmrk; CD244 Molecule, Natural Killer Cell Receptor 2B4; Signaling Lymphocytic Activation Molecule 4; NK Cell Type I Receptor Protein 2B4; NK Cell Activation-Inducing Ligand; SLAM Family Member 4; H2B4; NK Cell Activation Inducing Ligand NAIL; CD244 Natural Killer Cell Receptor 2B4; CD244 Antigen

Background

Gene Name: CD244

NCBI Gene Entry: [51744](#)

UniProt Entry: [Q9BZW8](#)

Application Information

Molecular Weight: Predicted, 42 kDa; observed, 48 kDa

Clonality: Mouse monoclonal antibody

Clone ID: 24GB8095

Species Reactivity: Human, mouse, rat

Applications Tested: Western blotting (WB), flow cytometry (FCM), immunocytochemistry (IC)

Immunogen

Recombinant protein of human CD244

Isotype

Mouse IgG1

Storage Buffer

Supplied in PBS (pH 7.4) containing 50% glycerol, and 0.02% sodium azide.

Storage

Store at -20 °C for one year.

Recommended Dilutions

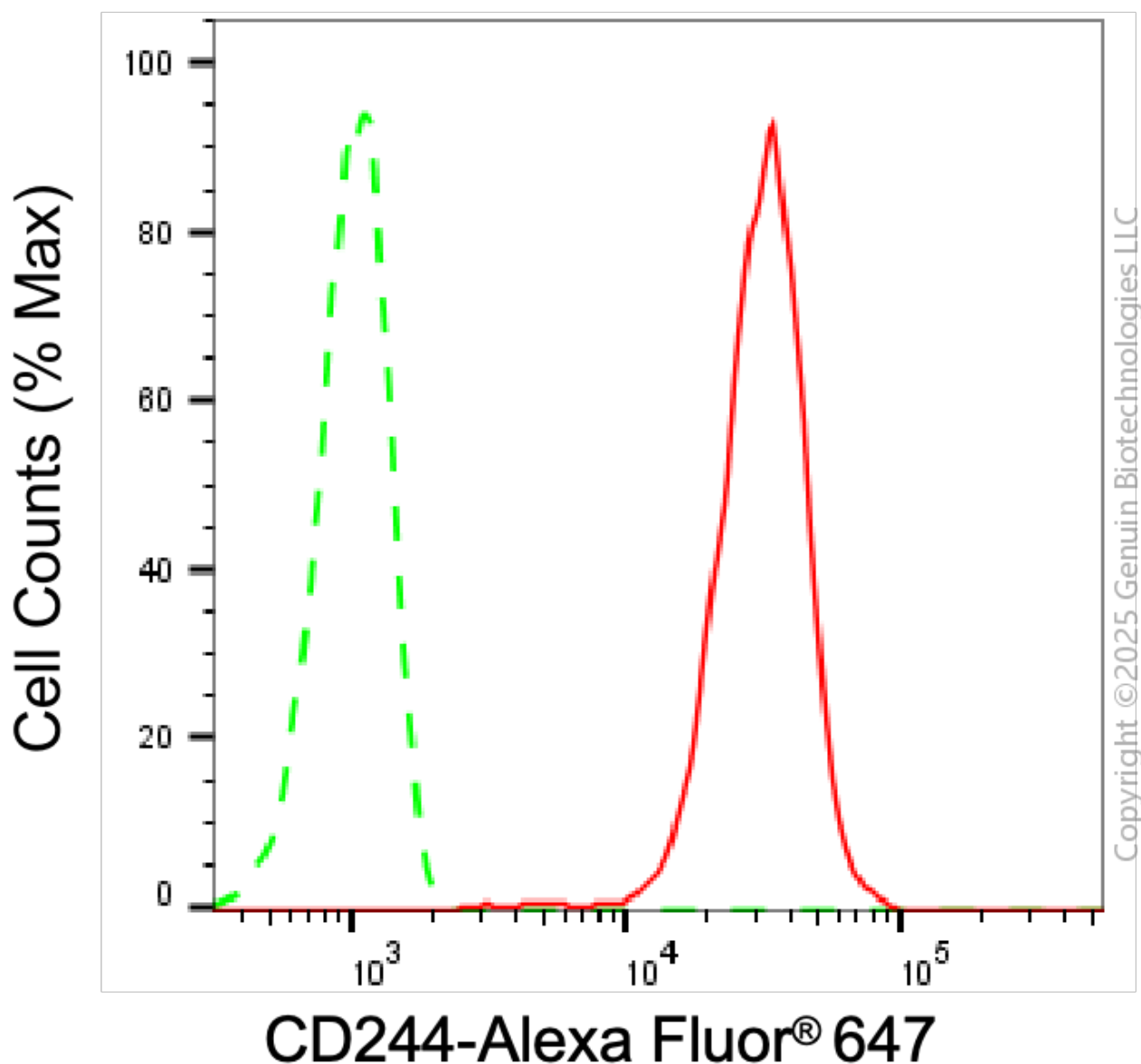
Western Blotting (WB): 1:1,000-1:2,500

Flow Cytometry (FCM): 1:1,000

Immunocytochemistry (IC): 1:100-1:1,000

Note: This product is for research use only.

Validation Data



Flow cytometric analysis of CD244 expression in C2C12 cells using anti-CD244 antibody (Cat#3832, 1:1,000). Green, isotype control; red, CD244.

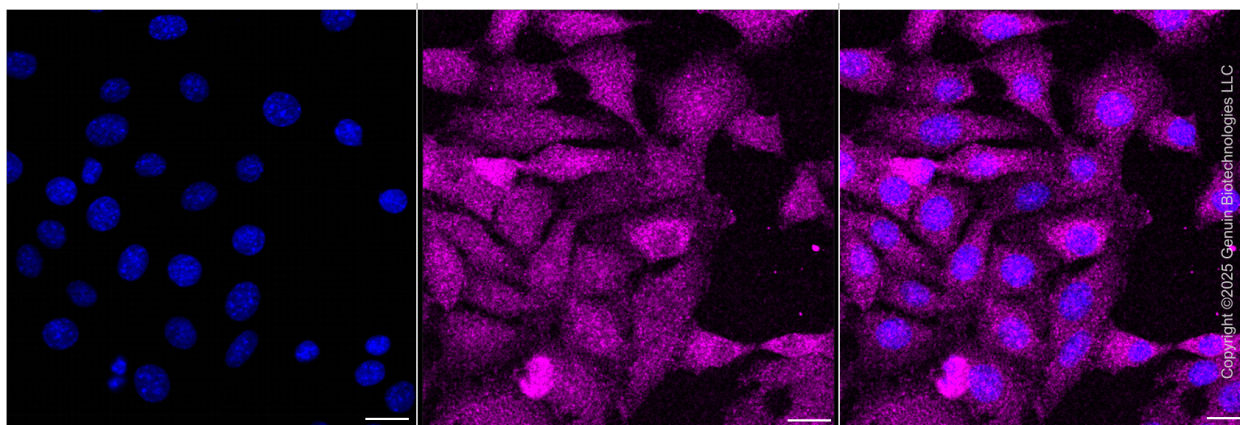
SUPPORT

SUPPORT@GENUINBIOTECH.COM
TEL: +1-540-855-7041

ORDERS

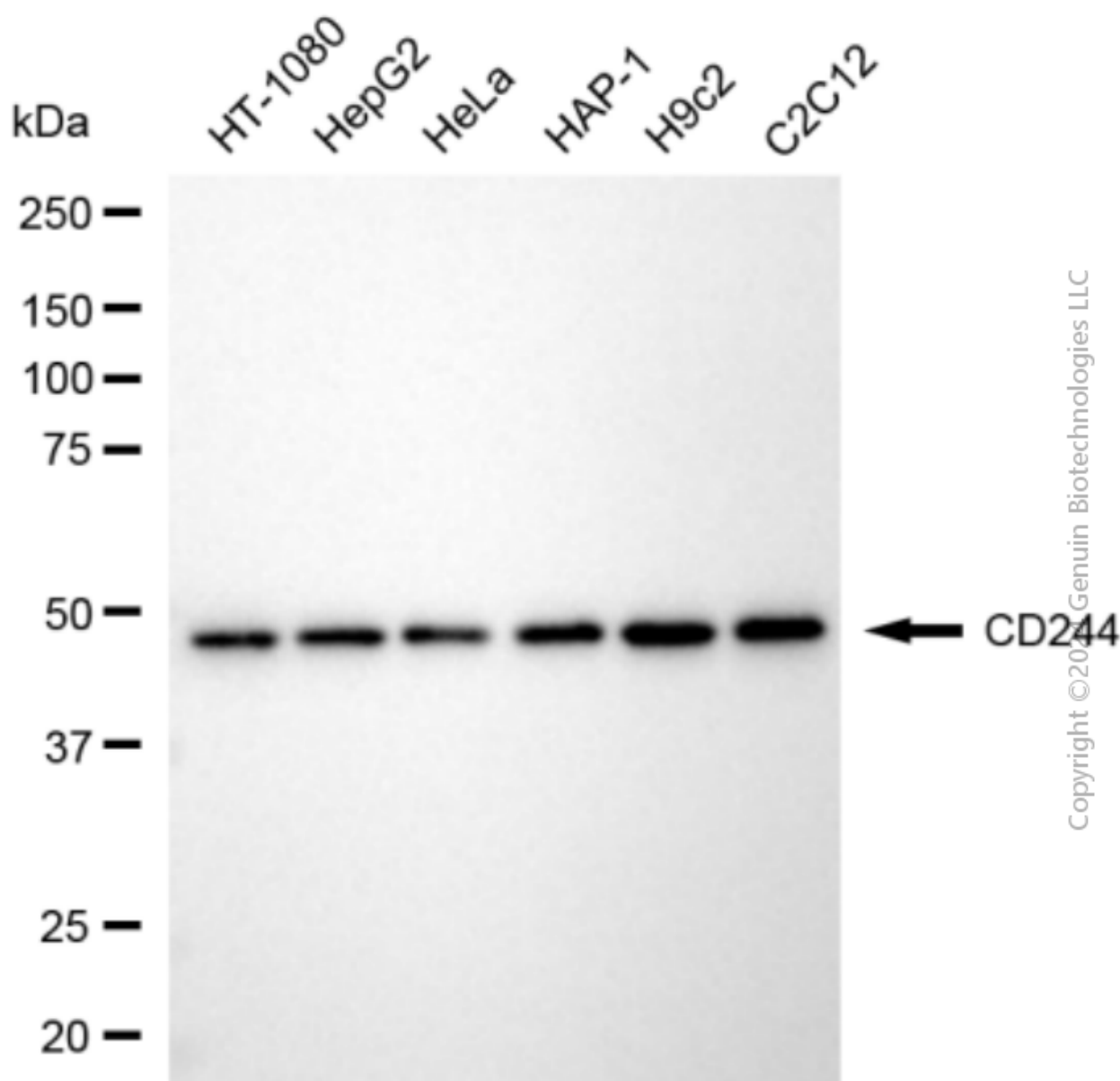
SALES@GENUINBIOTECH.COM
FAX: +1-540-855-7041

WWW.GENUINBIOTECH.COM



Immunocytochemical staining of C2C12 cells with anti-CD244 antibody (Cat#3832, 1:500) .

Nuclei were stained blue with DAPI; CD244 was stained magenta with Alexa Fluor® 647. Images were taken using Leica stellaris 5. Protein abundance based on laser Intensity and smart gain:Medium. Scale bar, 20 μ m.



Western blotting analysis using anti-CD244 antibody (Cat#3832). Total cell lysates (30 μ g) from various cell lines were loaded and separated by SDS-PAGE. The blot was incubated with anti-CD244 antibody (Cat#3832, 1:2,500) and HRP-conjugated goat anti-mouse secondary antibody (Cat#101, 1:20,000) respectively. Image was developed using FeQ™ ECL Substrate Kit (Cat#226).

SUPPORT

SUPPORT@GENUINBIOTECH.COM
TEL: +1-540-855-7041

ORDERS

SALES@GENUINBIOTECH.COM
FAX: +1-540-855-7041

WWW.GENUINBIOTECH.COM