

## Catalog #: 3847

## Aliases

DUSP23; Dual Specificity Phosphatase 23; DUSP25; Dual Specificity Protein Phosphatase 23; VH1-Like Phosphatase Z; FLJ20442; LDP-3; LDP3; VHZ; Low-Molecular-Mass Dual-Specificity Phosphatase 3; Low Molecular Mass Dual Specificity Phosphatase 3; Testicular Tissue Protein Li 59; VH1-Like Member Z; EC 3.1.3.16; EC 3.1.3.48; MOSP

## Background

Gene Name: DUSP23

NCBI Gene Entry: [54935](#)

UniProt Entry: [Q9BVJ7](#)

## Application Information

Molecular Weight: Predicted, 17 kDa; observed, 17 kDa

Clonality: Mouse monoclonal antibody

Clone ID: 24GB8165

Species Reactivity: Human

Applications Tested: Western blotting (WB), immunocytochemistry (IC), flow cytometry (FCM)

## Immunogen

Recombinant protein of human DUSP23

## Isotype

Mouse IgG2a

## Storage Buffer

Supplied in PBS (pH 7.4) containing 50% glycerol, and 0.02% sodium azide.

## Storage

Store at -20 °C for one year.

## Recommended Dilutions

Western Blotting (WB): 1:500-1:2,500

Immunocytochemistry (IC): 1:100-1:1,000

**Note:** This product is for research use only.

---

### SUPPORT

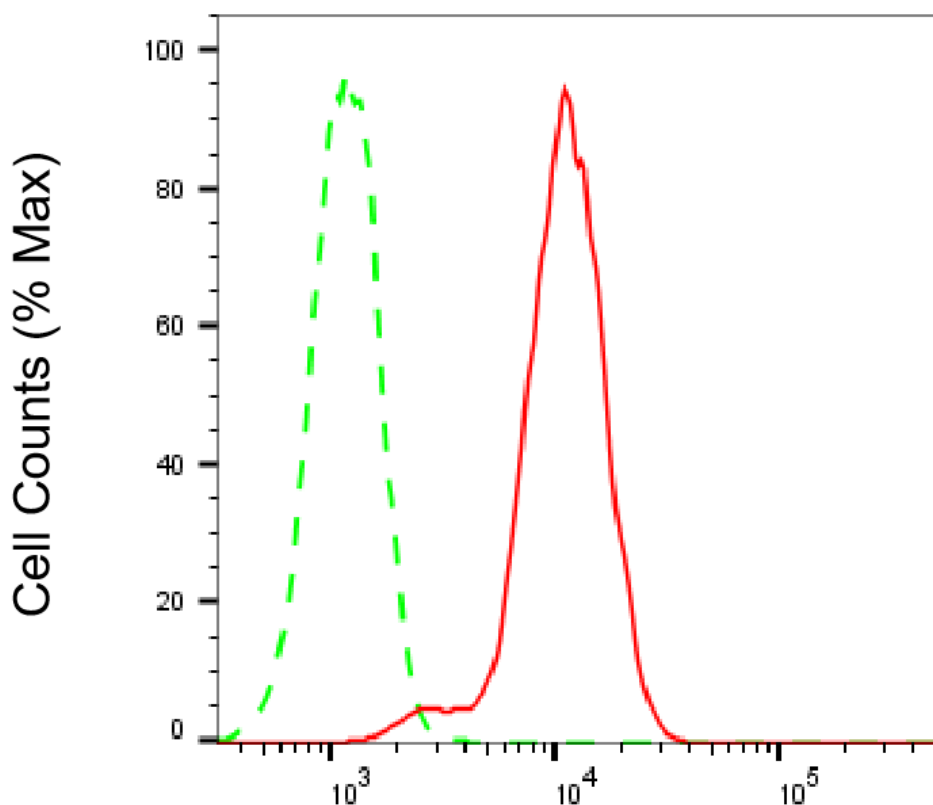
SUPPORT@GENUINBIOTECH.COM  
TEL: +1-540-855-7041

### ORDERS

SALES@GENUINBIOTECH.COM  
FAX: +1-540-855-7041

[WWW.GENUINBIOTECH.COM](http://WWW.GENUINBIOTECH.COM)

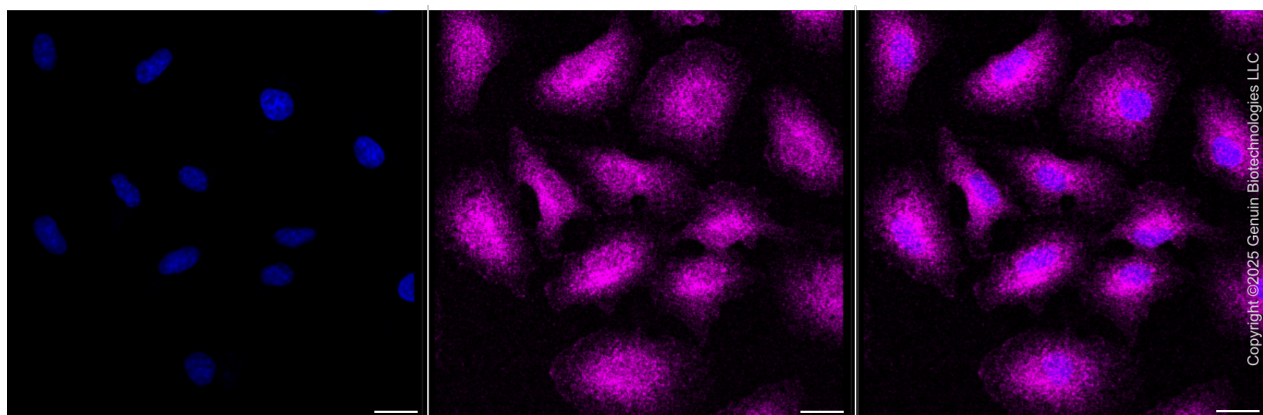
## Validation Data



Copyright ©2025 Genuin Biotechnologies LLC

## Dual specificity phosphatase 23-Alexa Fluor® 647

Flow cytometric analysis of Dual specificity phosphatase 23 expression in A549 cells using anti-Dual specificity phosphatase 23 antibody (Cat#3847, 1:1,000). Green, isotype control; red, Dual specificity phosphatase 23.



Copyright ©2025 Genuin Biotechnologies LLC

Immunocytochemical staining of A549 cells with anti-Dual specificity phosphatase 23 antibody (Cat#3847, 1:1,000). Nuclei were stained blue with DAPI; Dual specificity phosphatase 23 was

## SUPPORT

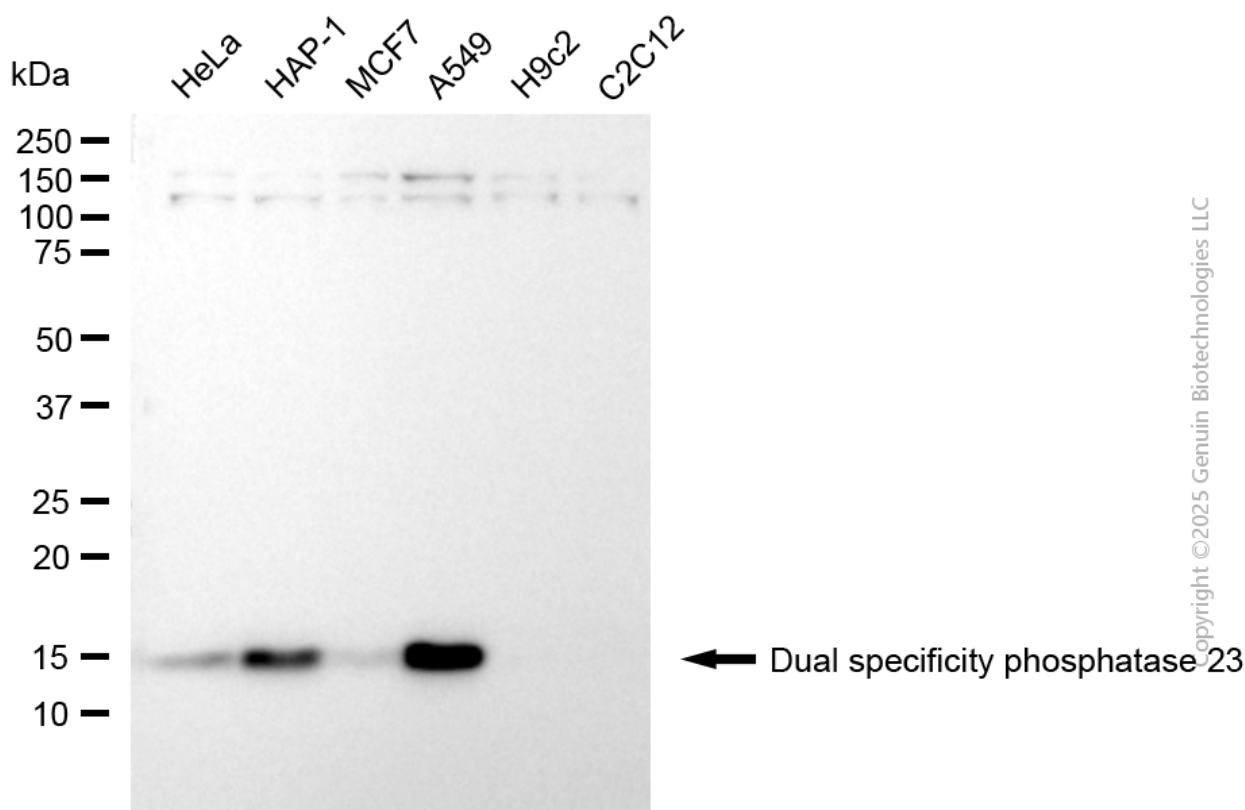
SUPPORT@GENUINBIOTECH.COM  
TEL: +1-540-855-7041

## ORDERS

SALES@GENUINBIOTECH.COM  
FAX: +1-540-855-7041

WWW.GENUINBIOTECH.COM

stained magenta with Alexa Fluor® 647. Images were taken using Leica stellaris 5. Protein abundance based on laser Intensity and smart gain: Medium. Scale bar, 20 µm.



Western blotting analysis using anti-dual specificity phosphatase 23 antibody (Cat#3847). Total cell lysates (30 µg) from various cell lines were loaded and separated by SDS-PAGE. The blot was incubated with anti-dual specificity phosphatase 23 antibody (Cat#3847, 1:2,500) and HRP-conjugated goat anti-mouse secondary antibody (Cat#101, 1:20,000) respectively. Image was developed using NaQ™ ECL Substrate Kit (Cat#716).