

Catalog #: 3855

Aliases

DEF6; DEF6 Guanine Nucleotide Exchange Factor; IBP; SWAP70L; SLAT; Differentially Expressed In FDCP 6 Homolog; SWAP-70-Like Adaptor Protein Of T Cells; IRF4-Binding Protein; DEF-6; Differentially Expressed In FDCP (Mouse Homolog) 6; Differentially Expressed In FDCP 6 Homolog (Mouse); IMD87

Background

Gene Name: DEF6

NCBI Gene Entry: [50619](#)

UniProt Entry: [Q9H4E7](#)

Application Information

Molecular Weight: Predicted, 74 kDa; observed, 74 kDa

Clonality: Mouse monoclonal antibody

Clone ID: 24GB8205

Species Reactivity: Human, mouse, rat

Applications Tested: Western blotting (WB), flow cytometry (FCM)

Immunogen

Recombinant protein of human DEF6

Isotype

Mouse IgG1

Storage Buffer

Supplied in PBS (pH 7.4) containing 50% glycerol, and 0.02% sodium azide.

Storage

Store at -20 °C for one year.

Recommended Dilutions

Western Blotting (WB): 1:1,000-1:2,500

Flow Cytometry (FCM): 1:1,000

Note: This product is for research use only.

SUPPORT

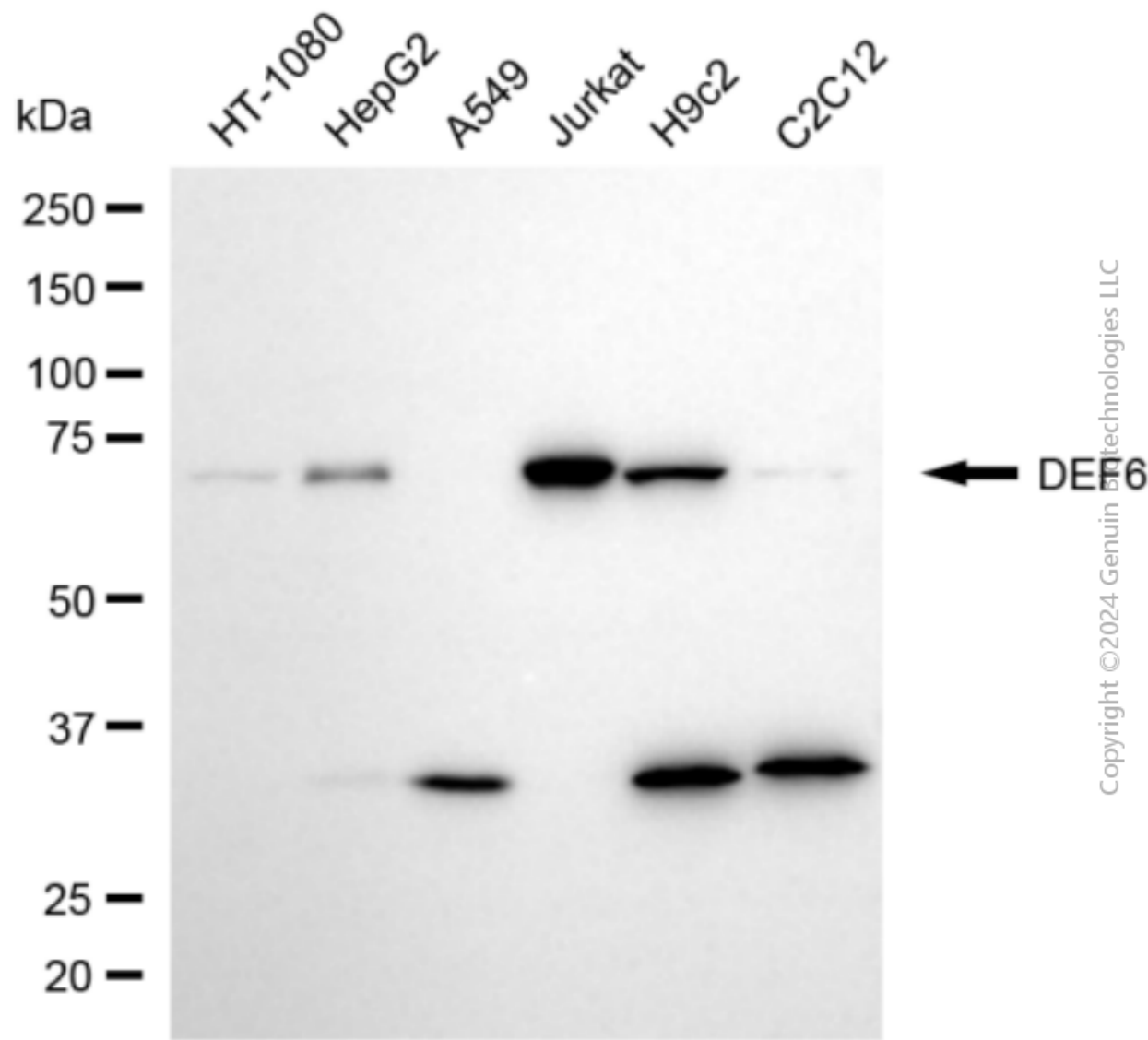
SUPPORT@GENUINBIOTECH.COM
TEL: +1-540-855-7041

ORDERS

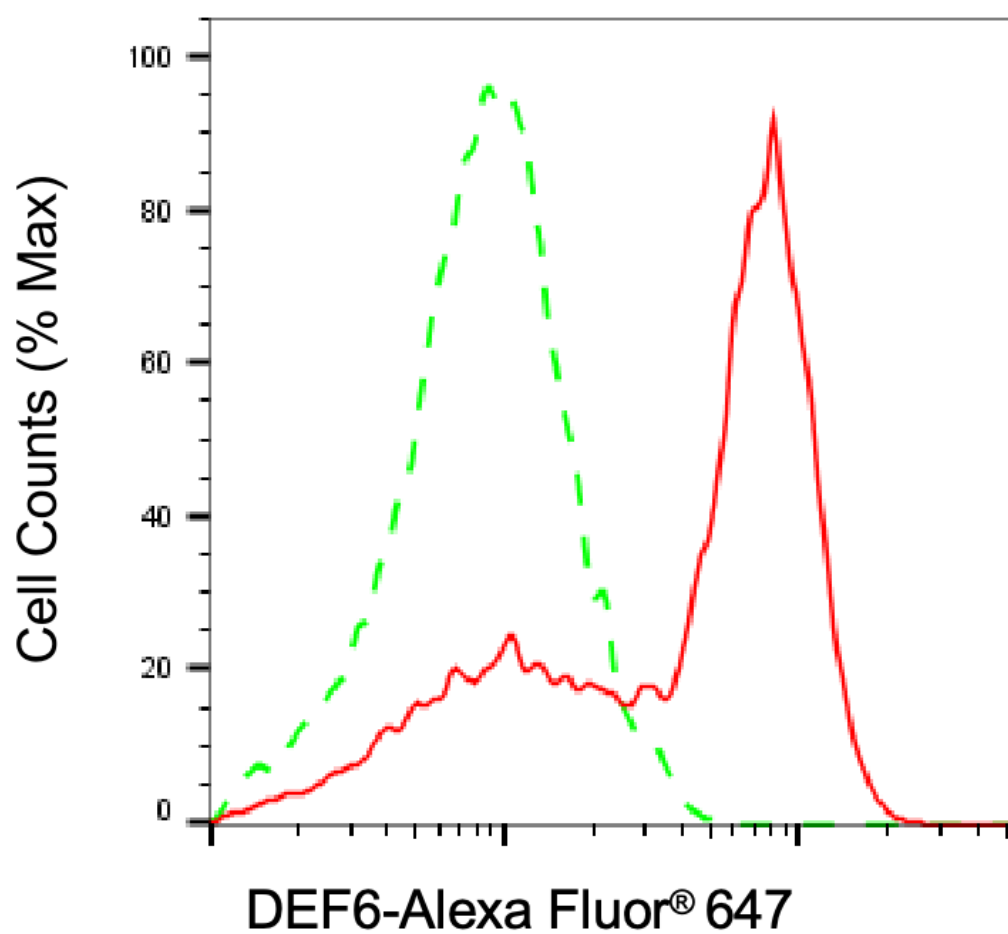
SALES@GENUINBIOTECH.COM
FAX: +1-540-855-7041

WWW.GENUINBIOTECH.COM

Validation Data



Western blotting analysis using anti-DEF6 antibody (Cat#3855). Total cell lysates (30 µg) from various cell lines were loaded and separated by SDS-PAGE. The blot was incubated with anti-DEF6 antibody (Cat#3855, 1:2,500) and HRP-conjugated goat anti-mouse secondary antibody (Cat#101, 1:20,000) respectively. Image was developed using NaQ™ ECL Substrate Kit (Cat#716).



Copyright ©2025 Genuin Biotechnologies LLC

Flow cytometric analysis of DEF6 expression in Jurkat cells using anti-DEF6 antibody (Cat#3855, 1:1,000). Green, isotype control; red, DEF6.