

Catalog #: 3875

Aliases

ERLIN1; ER Lipid Raft Associated 1; Erlin-1; KE04; C10orf69; SPG62; SPFH1; Band_7 23-211 Keo4 (Interim) Similar To C.Elegans Protein C42C1.9; Stomatin-Prohibitin-Flotillin-HflC/K Domain-Containing Protein 1; Endoplasmic Reticulum Lipid Raft-Associated Protein 1; SPFH Domain-Containing Protein 1; SPFH Domain Family, Member 1; KEO4; Chromosome 10 Open Reading Frame 69; Protein KE04

Background

Gene Name: ERLIN1

NCBI Gene Entry: [10613](#)

UniProt Entry: [O75477](#)

Application Information

Molecular Weight: Predicted, 39 kDa; observed, 39 kDa

Clonality: Mouse monoclonal antibody

Clone ID: 24GB8305

Species Reactivity: Human, mouse, rat

Applications Tested: Western blotting (WB), immunocytochemistry (IC)

Immunogen

Recombinant protein of human ERLIN1

Isotype

Mouse IgG1

Storage Buffer

Supplied in PBS (pH 7.4) containing 50% glycerol, and 0.02% sodium azide.

Storage

Store at -20 °C for one year.

Recommended Dilutions

Western Blotting (WB): 1:1,000-1:2,500

Immunocytochemistry (IC): 1:100-1:1,000

SUPPORT

SUPPORT@GENUINBIOTECH.COM
TEL: +1-540-855-7041

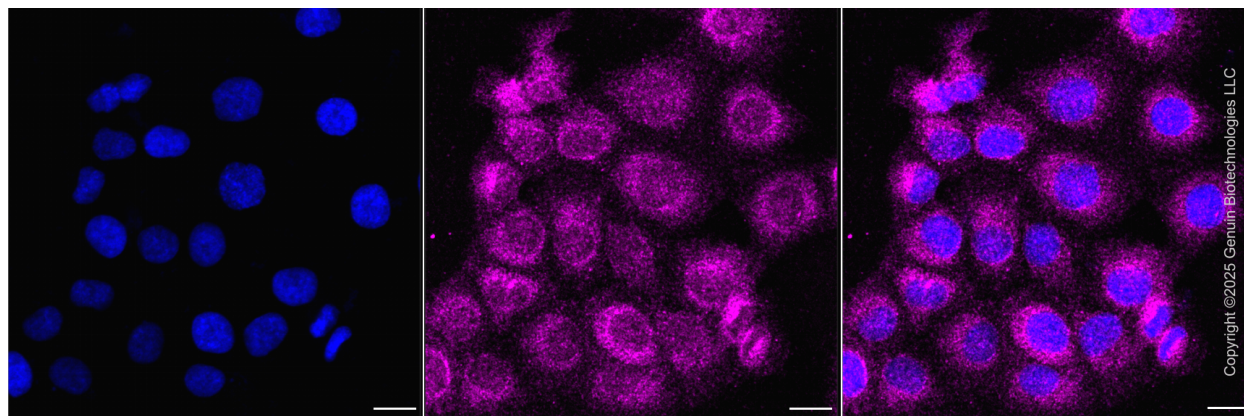
ORDERS

SALES@GENUINBIOTECH.COM
FAX: +1-540-855-7041

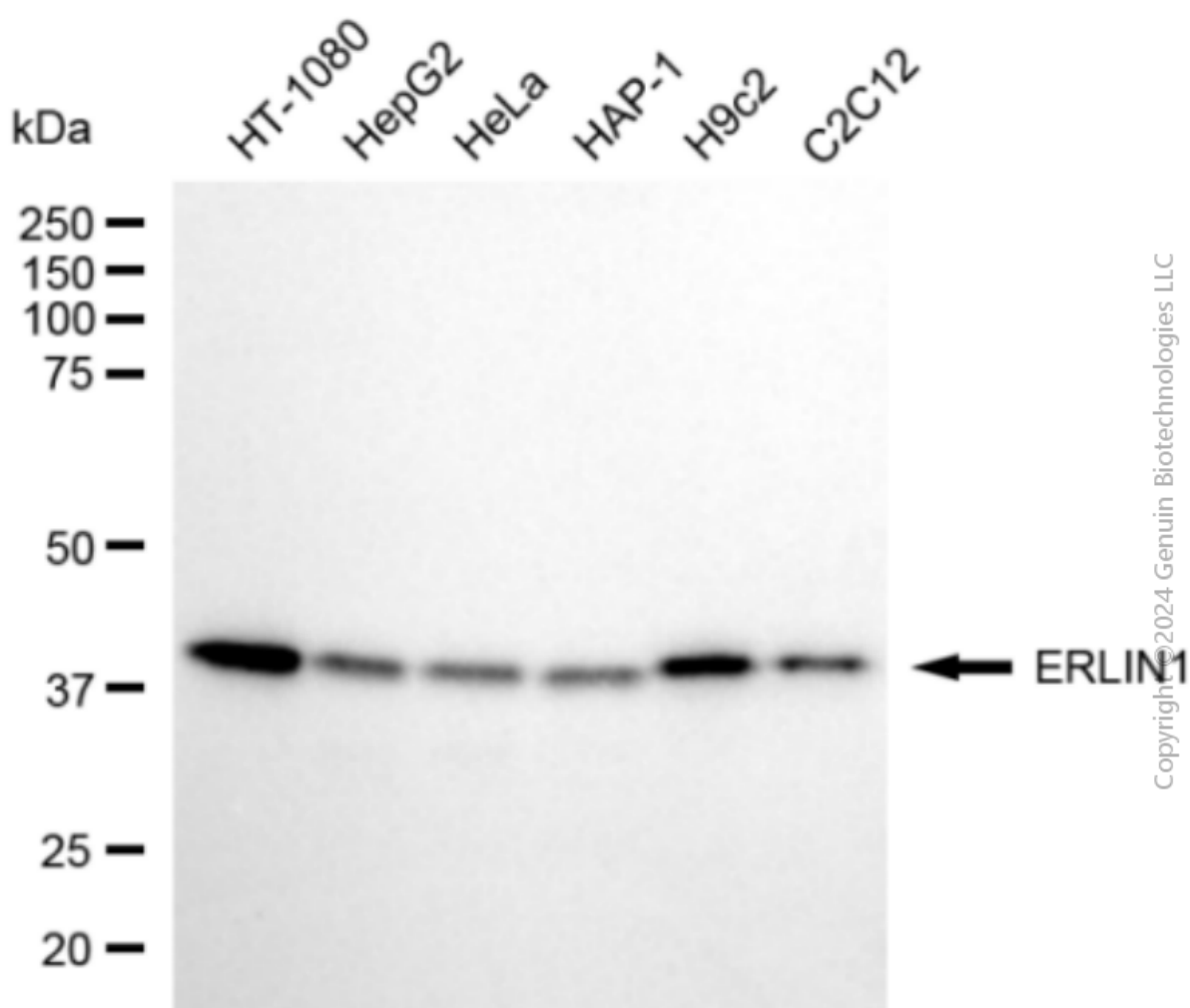
WWW.GENUINBIOTECH.COM

Note: This product is for research use only.

Validation Data



Immunocytochemical staining of HT-1080 cells with anti-ERLIN1 antibody (Cat#3875, 1:1,000) . Nuclei were stained blue with DAPI; ERLIN1 was stained magenta with Alexa Fluor® 647. Images were taken using Leica stellaris 5. Protein abundance based on laser Intensity and smart gain: Low. Scale bar, 20 μ m.



Western blotting analysis using anti-ERLIN1 antibody (Cat#3875). Total cell lysates (30 μ g) from various cell lines were loaded and separated by SDS-PAGE. The blot was incubated with anti-ERLIN1 antibody (Cat#3875, 1:2,500) and HRP-conjugated goat anti-mouse secondary antibody (Cat#101, 1:20,000) respectively. Image was developed using FeQ™ ECL Substrate Kit (Cat#226).