

Catalog #: 3877

Aliases

DIRAS2; DIRAS Family GTPase 2; Distinct Subgroup Of The Ras Family Member 2; Di-Ras2; DIRAS Family, GTP-Binding RAS-Like 2; GTP-Binding Protein Di-Ras2; DKFZp761C07121

Background

Gene Name: DIRAS2

NCBI Gene Entry: [54769](#)

UniProt Entry: [Q96HU8](#)

Application Information

Molecular Weight: Predicted, 22 kDa; observed, 24 kDa

Clonality: Mouse monoclonal antibody

Clone ID: 24GB8315

Species Reactivity: Human, mouse, rat

Applications Tested: Western blotting (WB), immunocytochemistry (IC)

Immunogen

Recombinant protein of human DIRAS2

Isotype

Mouse IgG1

Storage Buffer

Supplied in PBS (pH 7.4) containing 50% glycerol, and 0.02% sodium azide.

Storage

Store at -20 °C for one year.

Recommended Dilutions

Western Blotting (WB): 1:1,1000-1:5,000

Immunocytochemistry (IC): 1:100-1:1,000

Note: This product is for research use only.

Validation Data

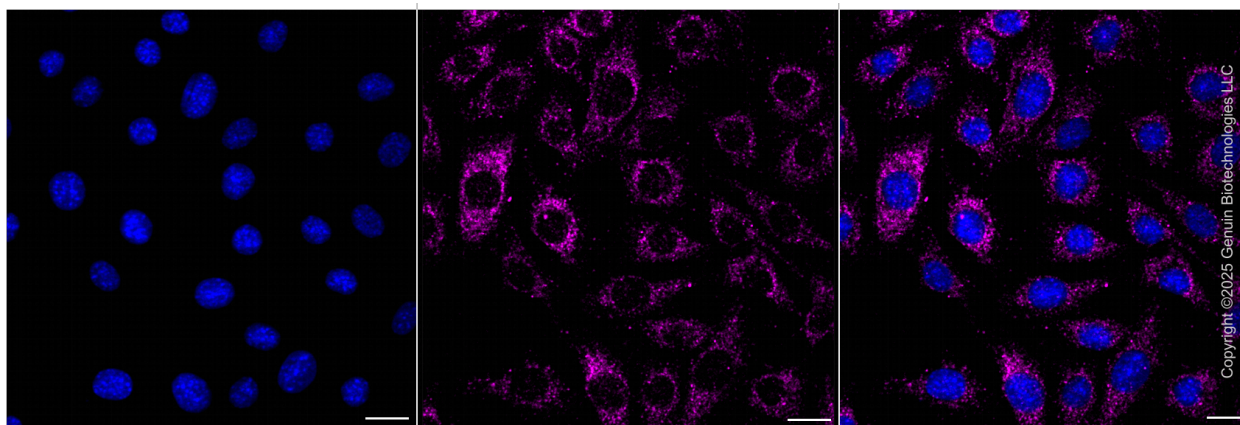
SUPPORT

SUPPORT@GENUINBIOTECH.COM
TEL: +1-540-855-7041

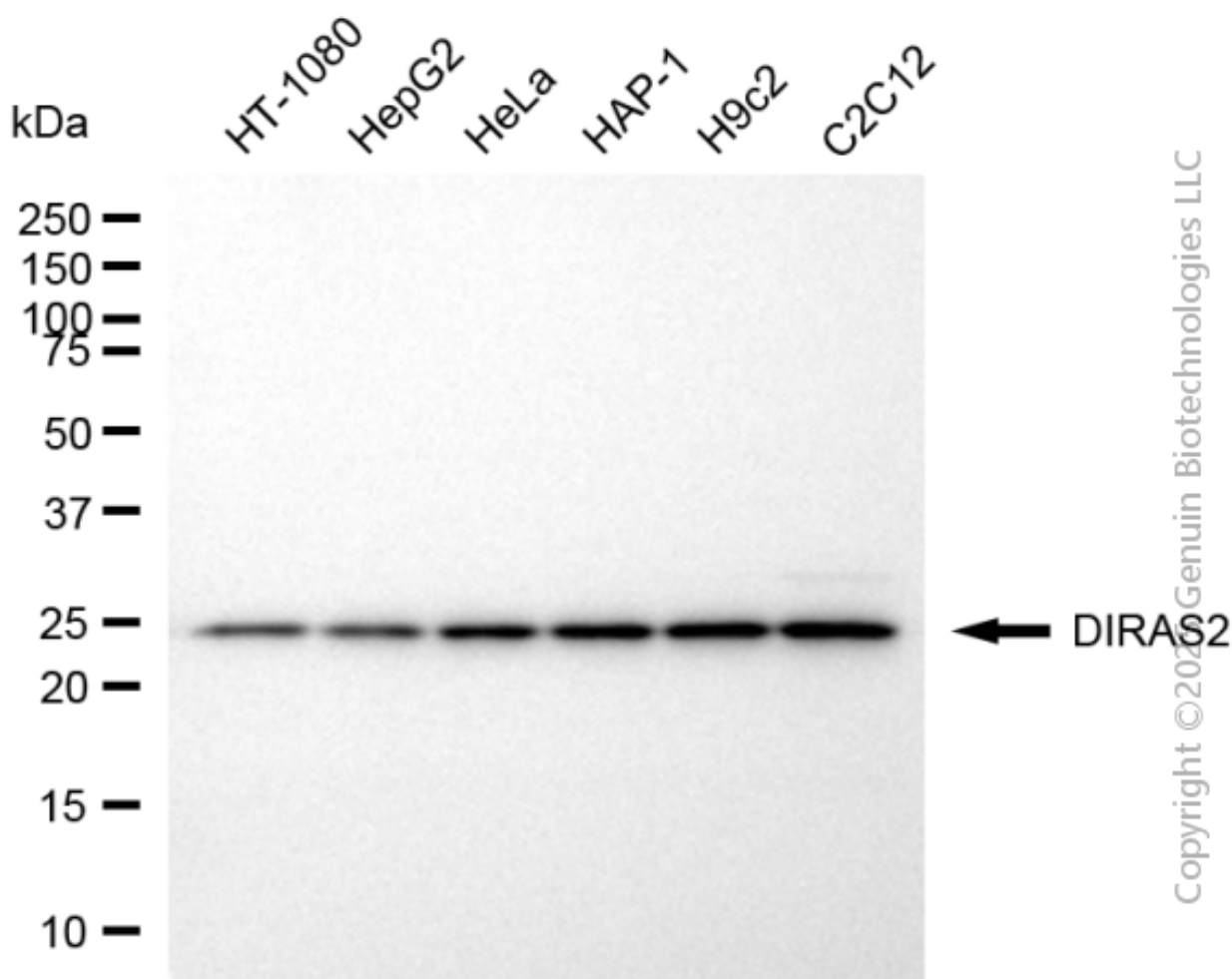
ORDERS

SALES@GENUINBIOTECH.COM
FAX: +1-540-855-7041

WWW.GENUINBIOTECH.COM



Immunocytochemical staining of C2C12 cells with anti-DIRAS2 antibody (Cat#3877, 1:1,000) . Nuclei were stained blue with DAPI; DIRAS2 was stained magenta with Alexa Fluor® 647. Images were taken using Leica stellaris 5. Protein abundance based on laser Intensity and smart gain: Medium. Scale bar, 20 μ m.



Western blotting analysis using anti-DIRAS2 antibody (Cat#3877). Total cell lysates (30 μ g) from

SUPPORT

SUPPORT@GENUINBIOTECH.COM
TEL: +1-540-855-7041

ORDERS

SALES@GENUINBIOTECH.COM
FAX: +1-540-855-7041

WWW.GENUINBIOTECH.COM

various cell lines were loaded and separated by SDS-PAGE. The blot was incubated with anti-DIRAS2 antibody (Cat#3877, 1:5,000) and HRP-conjugated goat anti-mouse secondary antibody (Cat#101, 1:20,000) respectively. Image was developed using FeQ™ ECL Substrate Kit (Cat#226).