

## Catalog #: 3886

### Aliases

DOK3; Docking Protein 3; Downstream Of Tyrosine Kinase 3; FLJ22570; Dok-Like Protein; DOKL

### Background

Gene Name: DOK3

NCBI Gene Entry: [79930](#)

UniProt Entry: [Q7L591](#)

### Application Information

Molecular Weight: Predicted, 53 kDa; observed, 53 kDa

Clonality: Mouse monoclonal antibody

Clone ID: 24GB8360

Species Reactivity: Human

Applications Tested: Western blotting (WB), flow cytometry (FCM)

### Immunogen

Recombinant protein of human DOK3

### Isotype

Mouse IgG1

### Storage Buffer

Supplied in PBS (pH 7.4) containing 50% glycerol, and 0.02% sodium azide.

### Storage

Store at -20 °C for one year.

### Recommended Dilutions

Western Blotting (WB): 1:500-1:1,000

Flow Cytometry (FCM): 1:1,000

**Note:** This product is for research use only.

### Validation Data

---

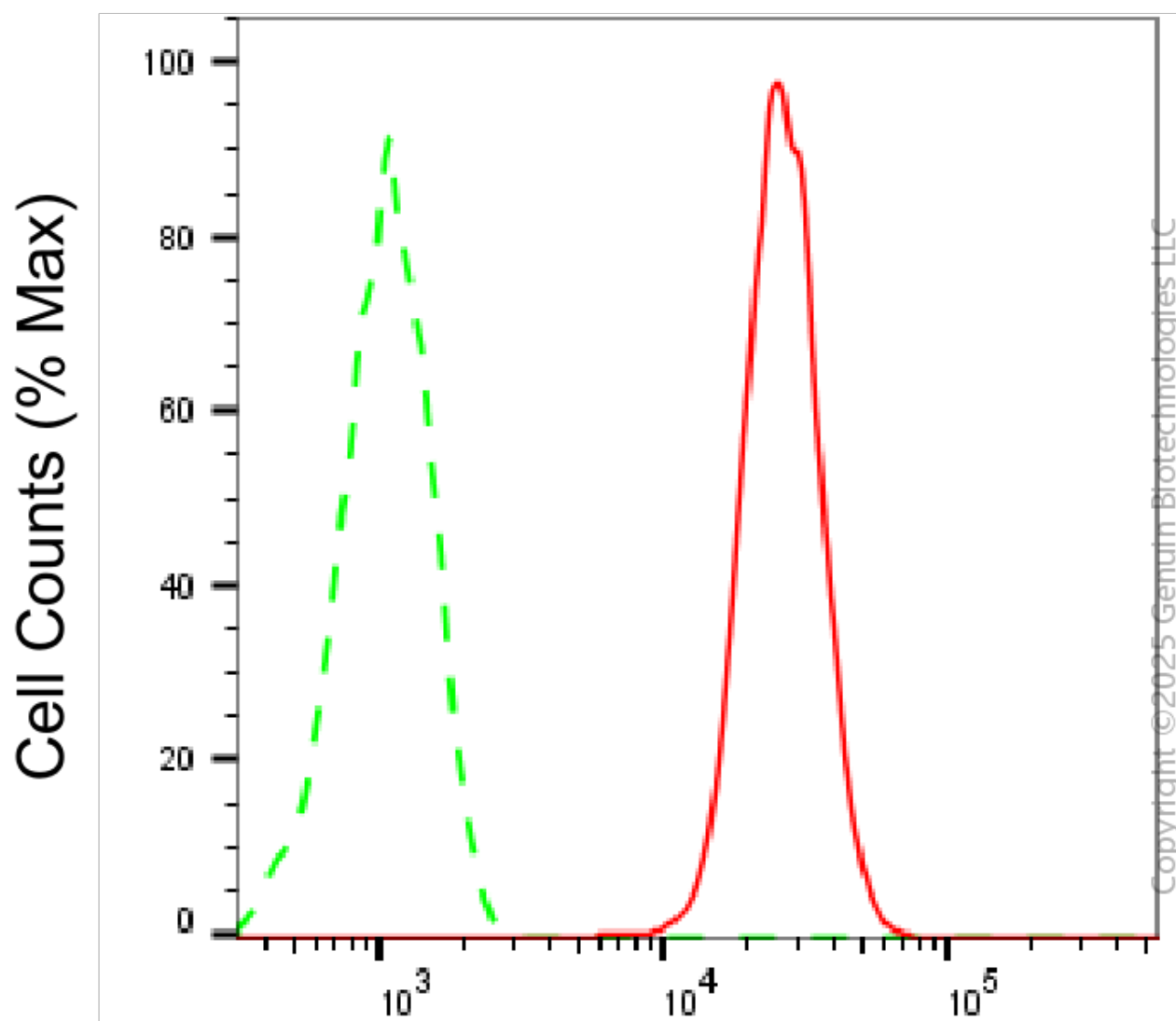
#### SUPPORT

SUPPORT@GENUINBIOTECH.COM  
TEL: +1-540-855-7041

#### ORDERS

SALES@GENUINBIOTECH.COM  
FAX: +1-540-855-7041

[WWW.GENUINBIOTECH.COM](http://WWW.GENUINBIOTECH.COM)



## Docking protein 3-Alexa Fluor® 647

Flow cytometric analysis of Docking protein 3 expression in Raji cells using anti-Docking protein 3 antibody (Cat#3886, 1:1,000). Green, isotype control; red, Docking protein 3.

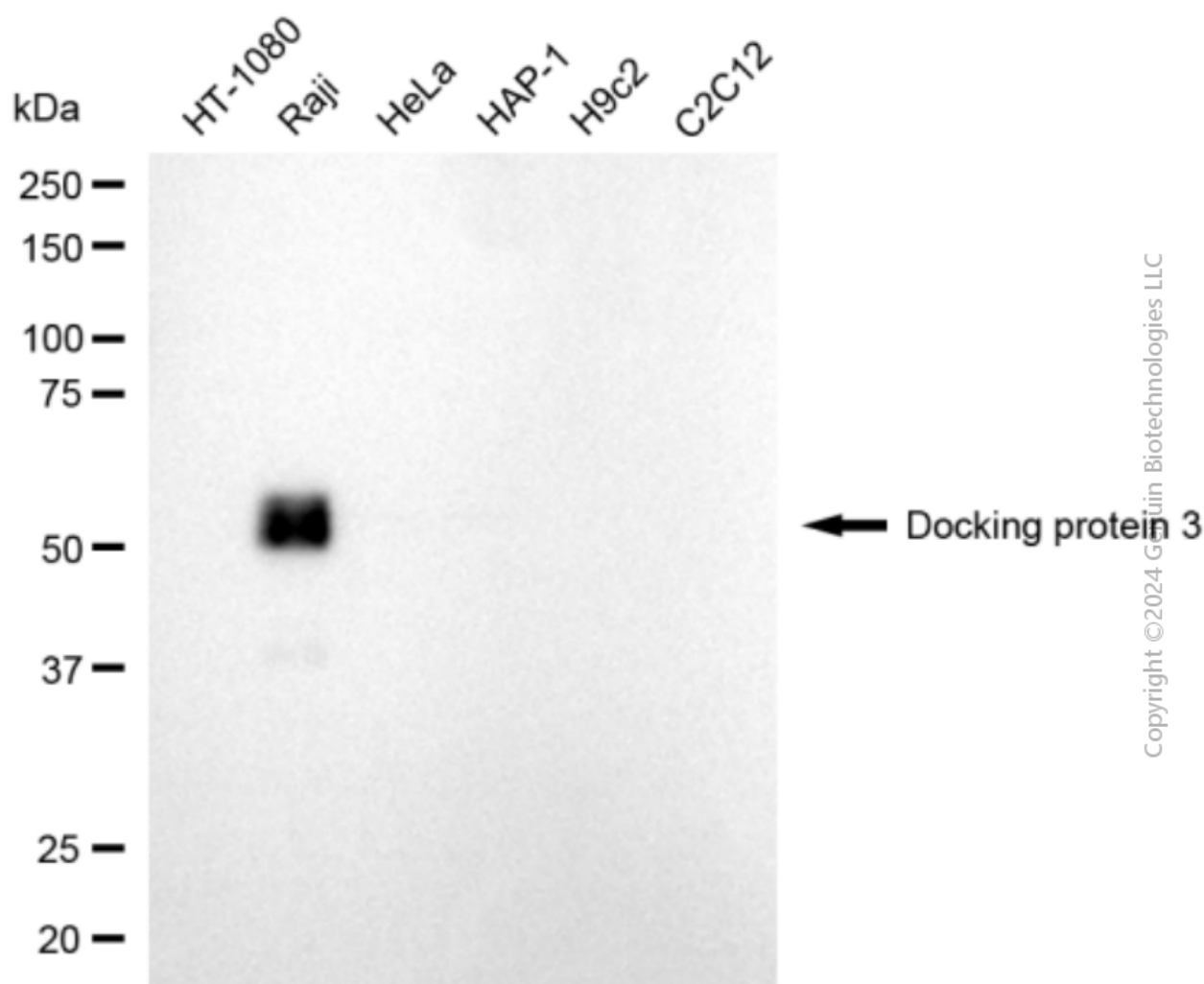
### SUPPORT

SUPPORT@GENUINBIOTECH.COM  
TEL: +1-540-855-7041

### ORDERS

SALES@GENUINBIOTECH.COM  
FAX: +1-540-855-7041

[WWW.GENUINBIOTECH.COM](http://WWW.GENUINBIOTECH.COM)



Western blotting analysis using anti-docking protein 3 antibody (Cat#3886). Total cell lysates (30 µg) from various cell lines were loaded and separated by SDS-PAGE. The blot was incubated with anti-docking protein 3 antibody (Cat#3886, 1:1,000) and HRP-conjugated goat anti-mouse secondary antibody (Cat#101, 1:20,000) respectively. Image was developed using FeQ™ ECL Substrate Kit (Cat#226).