

Catalog #: 3887

Aliases

DOK3; Docking Protein 3; Downstream Of Tyrosine Kinase 3; FLJ22570; Dok-Like Protein; DOKL

Background

Gene Name: DOK3

NCBI Gene Entry: [79930](#)

UniProt Entry: [Q7L591](#)

Application Information

Molecular Weight: Predicted, 53 kDa; observed, 53 kDa

Clonality: Mouse monoclonal antibody

Clone ID: 24GB8365

Species Reactivity: Human

Applications Tested: Western blotting (WB), flow cytometry (FCM)

Immunogen

Recombinant protein of human DOK3

Isotype

Mouse IgG1

Storage Buffer

Supplied in PBS (pH 7.4) containing 50% glycerol, and 0.02% sodium azide.

Storage

Store at -20 °C for one year.

Recommended Dilutions

Western Blotting (WB): 1:500-1:1,000

Flow Cytometry (FCM): 1:1,000

Note: This product is for research use only.

Validation Data

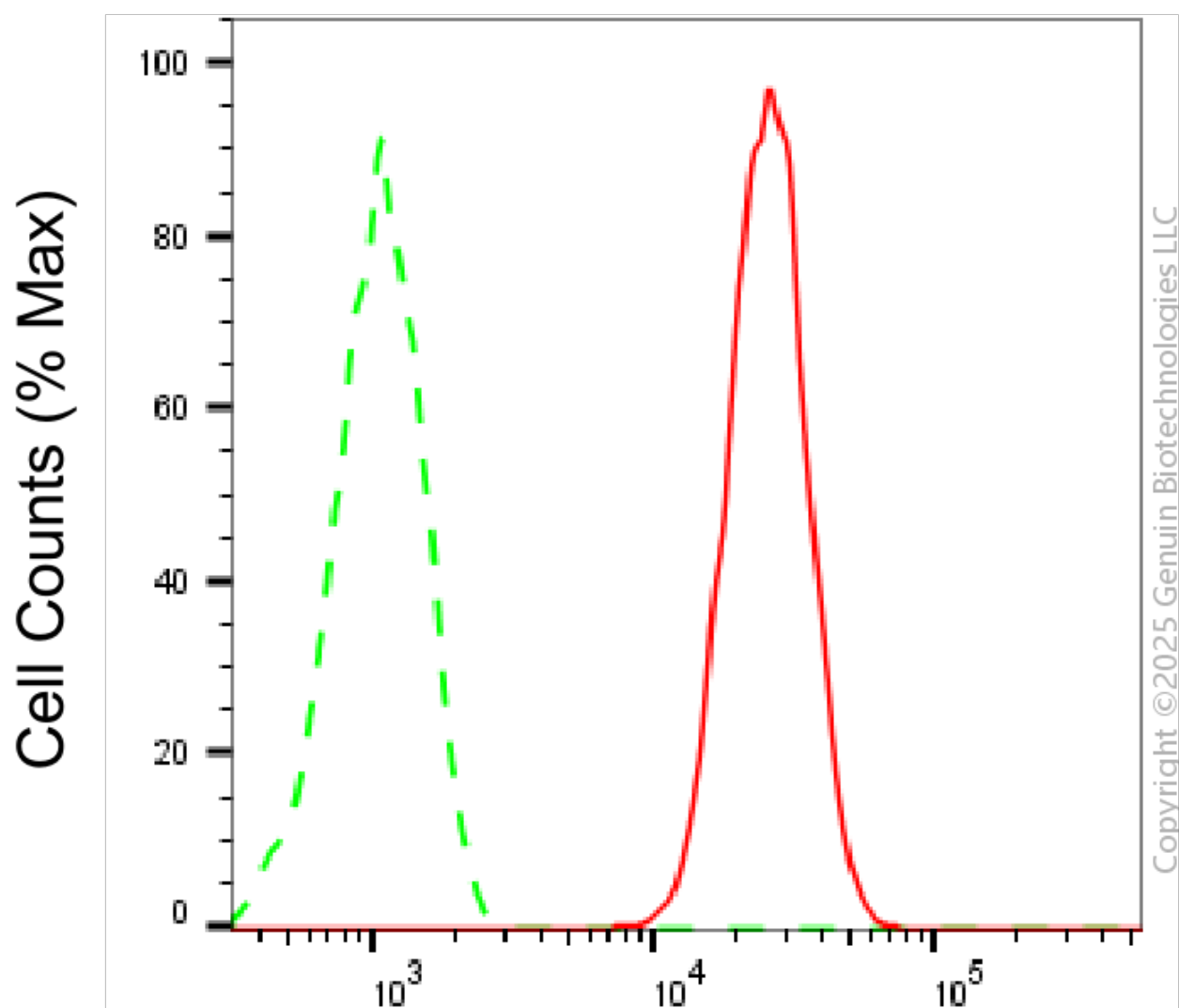
SUPPORT

SUPPORT@GENUINBIOTECH.COM
TEL: +1-540-855-7041

ORDERS

SALES@GENUINBIOTECH.COM
FAX: +1-540-855-7041

WWW.GENUINBIOTECH.COM



Docking protein 3-Alexa Fluor® 647

Flow cytometric analysis of Docking protein 3 expression in Raji cells using anti-Docking protein 3 antibody (Cat#3887, 1:1,000). Green, isotype control; red, Docking protein 3.

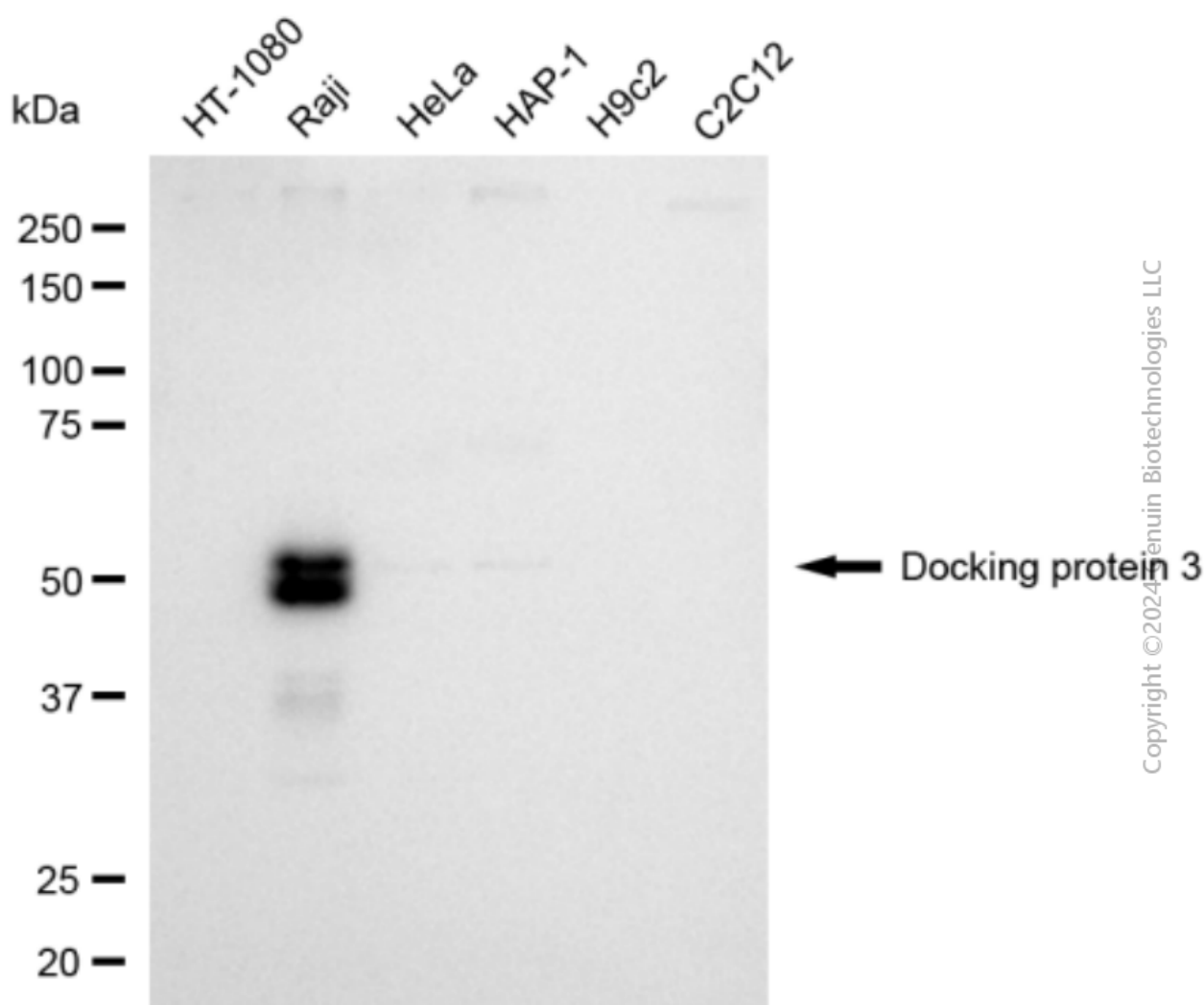
SUPPORT

SUPPORT@GENUINBIOTECH.COM
TEL: +1-540-855-7041

ORDERS

SALES@GENUINBIOTECH.COM
FAX: +1-540-855-7041

WWW.GENUINBIOTECH.COM



Western blotting analysis using anti-docking protein 3 antibody (Cat#3887). Total cell lysates (30 μ g) from various cell lines were loaded and separated by SDS-PAGE. The blot was incubated with anti-docking protein 3 antibody (Cat#3887, 1:1,000) and HRP-conjugated goat anti-mouse secondary antibody (Cat#101, 1:20,000) respectively. Image was developed using FeQ™ ECL Substrate Kit (Cat#226).