

## Catalog #: 3901

### Aliases

HSPD1; Heat Shock Protein Family D (Hsp60) Member 1; HSP60; GroEL; 60 KDa Heat Shock Protein, Mitochondrial; Heat Shock 60kDa Protein 1 (Chaperonin); Mitochondrial Matrix Protein P1; P60 Lymphocyte Protein; 60 KDa Chaperonin; Chaperonin 60; HuCHA60; HSP-60; CPN60; SPG13; Spastic Paraplegia 13 (Autosomal Dominant); Epididymis Secretory Sperm Binding Protein; Heat Shock 60kD Protein 1 (Chaperonin); Short Heat Shock Protein 60 Hsp60s1; Heat Shock Protein 65; Heat Shock Protein 60; EC 5.6.1.7; HSP65; Hsp60; HLD4

### Background

Gene Name: HSPD1

NCBI Gene Entry: [3329](#)

UniProt Entry: [P10809](#)

### Application Information

Molecular Weight: Predicted, 61 kDa; observed, 60 kDa

Clonality: Rabbit polyclonal antibody

Species Reactivity: Human, mouse, rat

Applications Tested: Western blotting (WB)

### Immunogen

A synthesized peptide derived from human HSP60

### Isotype

Rabbit IgG

### Storage Buffer

Supplied in PBS (pH 7.4) containing 50% glycerol, and 0.02% sodium azide.

### Storage

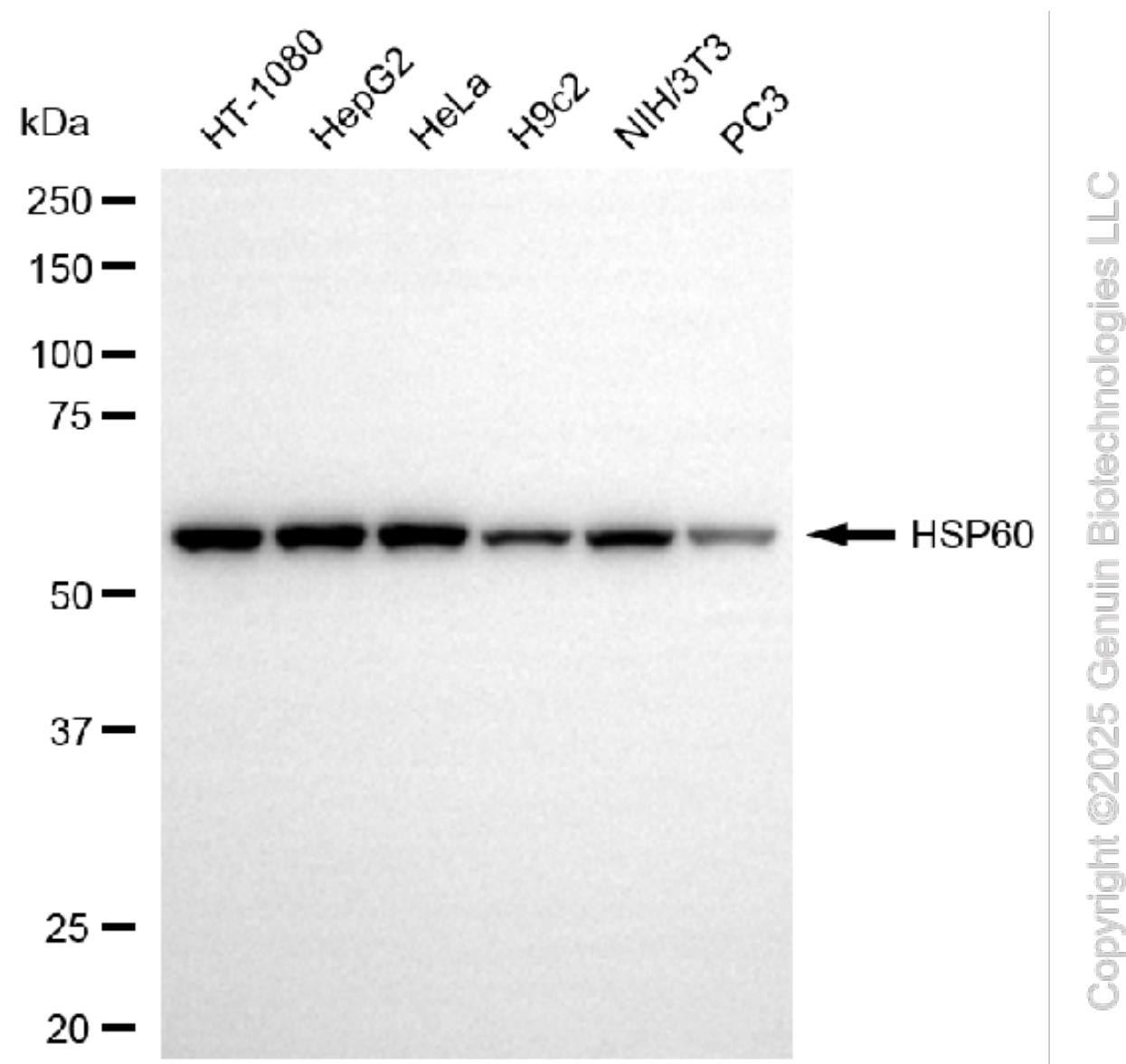
Store at -20 °C for one year.

### Recommended Dilutions

Western Blotting (WB): 1:2,000-1:10,000

**Note:** This product is for research use only.

## Validation Data



Western blotting analysis using anti-HSP60 antibody (Cat#3901). Total cell lysates (30  $\mu$ g) from various cell lines were loaded and separated by SDS-PAGE. The blot was incubated with anti-HSP60 antibody (Cat#3901, 1:10,000) and HRP-conjugated goat anti rabbit secondary antibody (Cat#201, 1:20,000) respectively. Image was developed using NaQ™ ECL Substrate Kit (Cat#716).

## SUPPORT

SUPPORT@GENUINBIOTECH.COM  
TEL: +1-540-855-7041

## ORDERS

SALES@GENUINBIOTECH.COM  
FAX: +1-540-855-7041

WWW.GENUINBIOTECH.COM