

Catalog #: 3913

Aliases

LAMP1; Lysosomal Associated Membrane Protein 1; CD107a; Lysosome-Associated Membrane Glycoprotein 1; Lysosome-Associated Membrane Protein 1; CD107 Antigen-Like Family Member A; LAMP-1; Lysosomal-Associated Membrane Protein 1; CD107a Antigen; LGP120; LAMPA

Background

Gene Name: LAMP1

NCBI Gene Entry: [3916](#)

UniProt Entry: [P11279](#)

Application Information

Molecular Weight: Predicted, 45 kDa; observed, 90-120 kDa

Clonality: Mouse monoclonal antibody

Clone ID: 24GB8655

Species Reactivity: Human

Applications Tested: Western blotting (WB)

Immunogen

Recombinant protein of human CD107a

Isotype

Mouse IgG1 kappa

Storage Buffer

Supplied in PBS (pH 7.4) containing 50% glycerol, and 0.02% sodium azide.

Storage

Store at -20 °C for one year.

Recommended Dilutions

Western Blotting (WB): 1:400-1:2,000

Note: This product is for research use only.

Validation Data

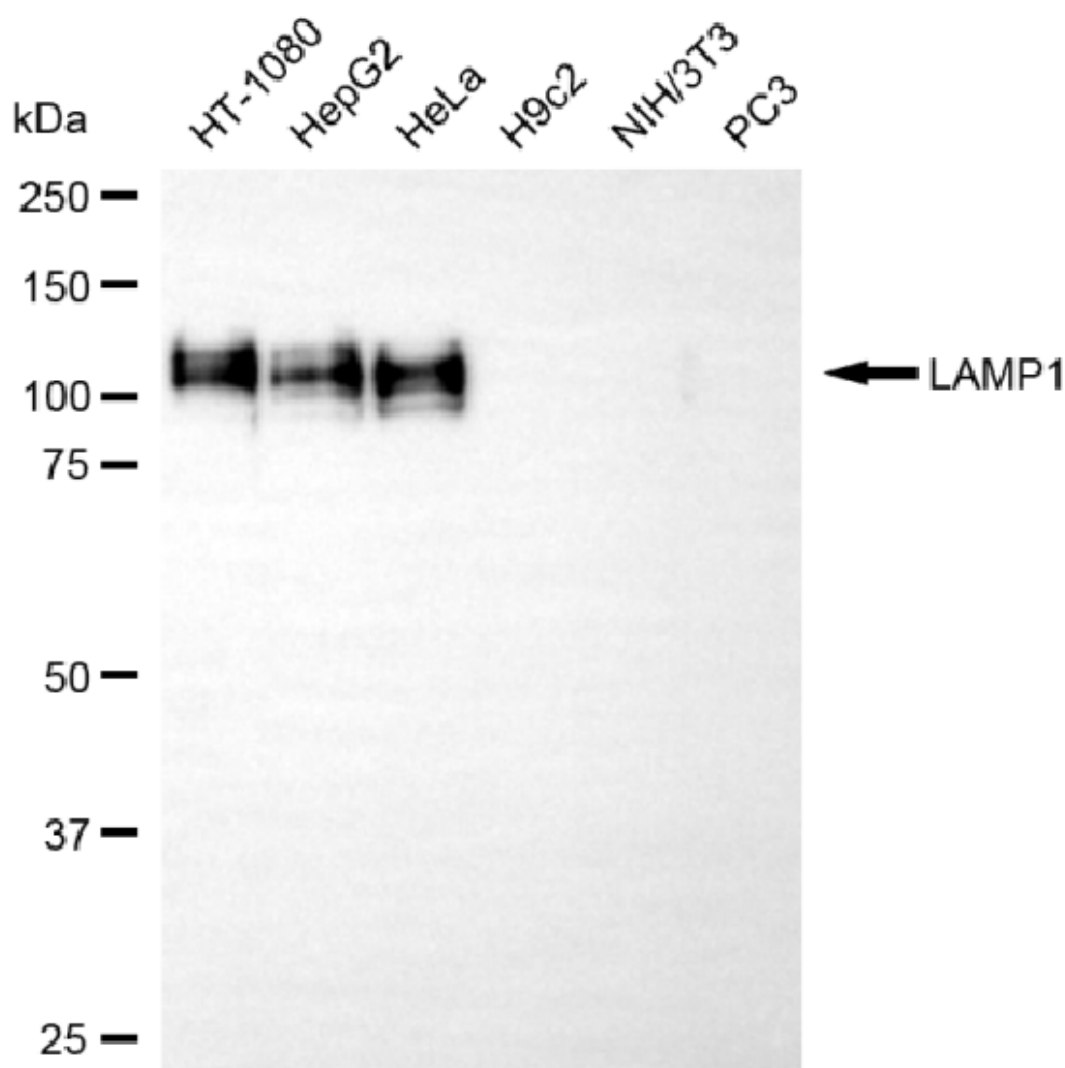
SUPPORT

SUPPORT@GENUINBIOTECH.COM
TEL: +1-540-855-7041

ORDERS

SALES@GENUINBIOTECH.COM
FAX: +1-540-855-7041

WWW.GENUINBIOTECH.COM



Copyright ©2025 Genuin Biotechnologies LLC

Western blotting analysis using anti-LAMP1 antibody (Cat#3913). Total cell lysates (30 μ g) from various cell lines were loaded and separated by SDS-PAGE. The blot was incubated with anti-LAMP1 antibody (Cat#3913, 1:2,000) and HRP-conjugated goat anti-rabbit secondary antibody (Cat#201, 1:20,000) respectively. Image was developed using NaQ™ ECL Substrate Kit (Cat#716).

SUPPORT

SUPPORT@GENUINBIOTECH.COM
TEL: +1-540-855-7041

ORDERS

SALES@GENUINBIOTECH.COM
FAX: +1-540-855-7041

WWW.GENUINBIOTECH.COM