

Anti-CHMP2B Recombinant Rabbit Monoclonal Antibody



Catalog #: 3917

Aliases

CHMP2B; Charged Multivesicular Body Protein 2B; CHMP2.5; VPS2B; Charged Multivesicular Body Protein 2b; Chromatin Modifying Protein 2B; DKFZP564O123; Vacuolar Protein-Sorting-Associated Protein 2-2; Vacuolar Protein Sorting-Associated Protein 2-2; VPS2 Homolog B (S. Cerevisiae); Chromatin-Modifying Protein 2b; VPS2 Homolog B; FTDALS7; HVps2-2; VPS2-2; CHMP2b; Vps2-2; ALS17; DMT1

Background

Gene Name: CHMP2B

NCBI Gene Entry: [25978](#)

UniProt Entry: [Q9UQN3](#)

Application Information

Molecular Weight: Predicted, 24 kDa; observed, 28 kDa

Clonality: Rabbit monoclonal antibody

Clone ID: 24GB8675

Species Reactivity: Human, mouse, rat

Applications Tested: Western blotting (WB), flow cytometry (FCM), immunocytochemistry (IC)

Immunogen

A synthesized peptide derived from CHMP2B

Isotype

Rabbit IgG

Storage Buffer

Supplied in PBS (pH 7.4) containing 50% glycerol, and 0.02% sodium azide.

Storage

Store at -20 °C for one year.

Recommended Dilutions

Western Blotting (WB): 1:1,000-1:5,000

Flow Cytometry (FCM): 1:2,000

Immunocytochemistry (IC): 1:100-1:1,000

SUPPORT

SUPPORT@GENUINBIOTECH.COM
TEL: +1-540-855-7041

ORDERS

SALES@GENUINBIOTECH.COM
FAX: +1-540-855-7041

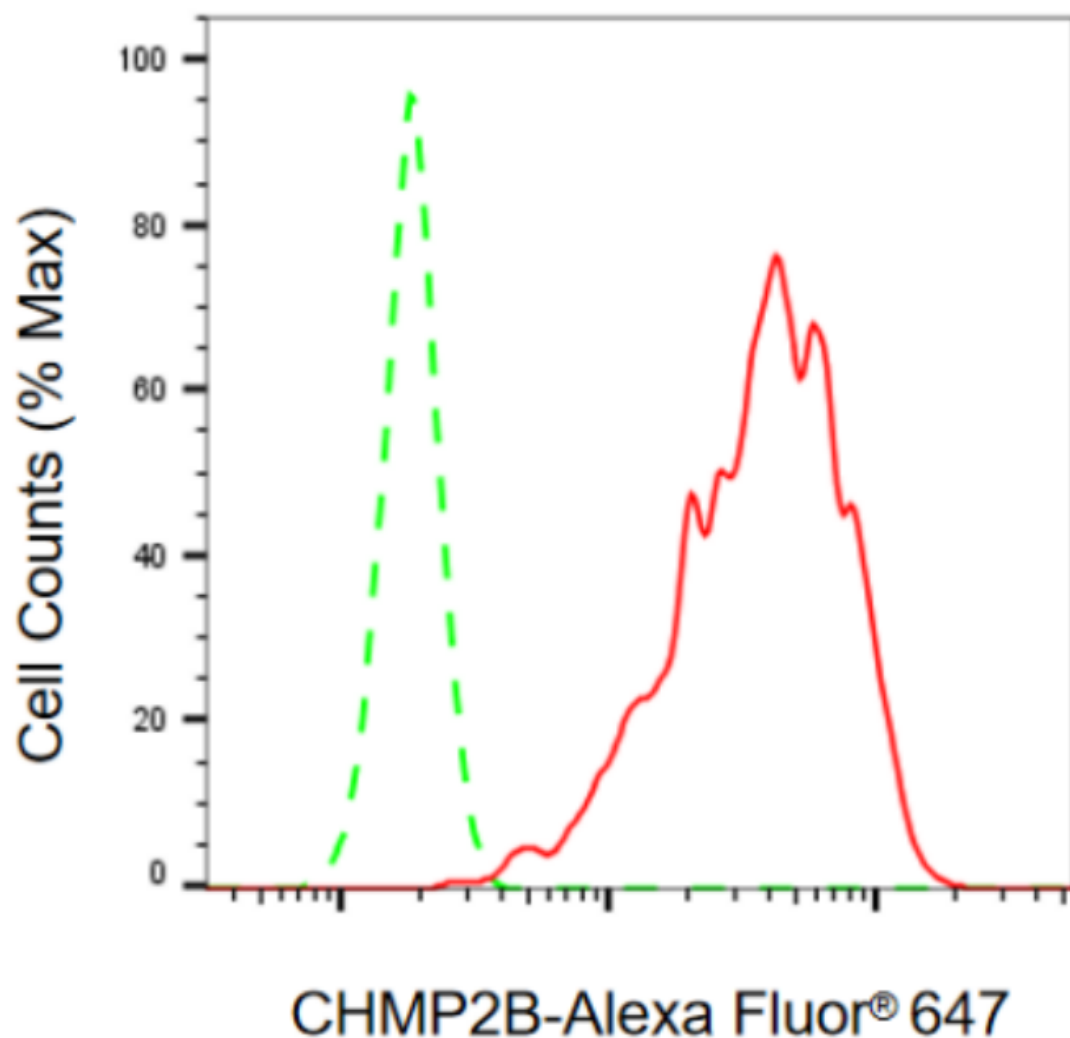
WWW.GENUINBIOTECH.COM

Anti-CHMP2B Recombinant Rabbit Monoclonal Antibody

PAGE 2

Note: This product is for research use only.

Validation Data



Copyright ©2024 Genuin Biotechnologies LLC

Flow cytometric analysis of CHMP2B expression in HepG2 cells using anti-CHMP2B antibody (Cat#3917, 1:2,000). Green, isotype control; red, CHMP2B.

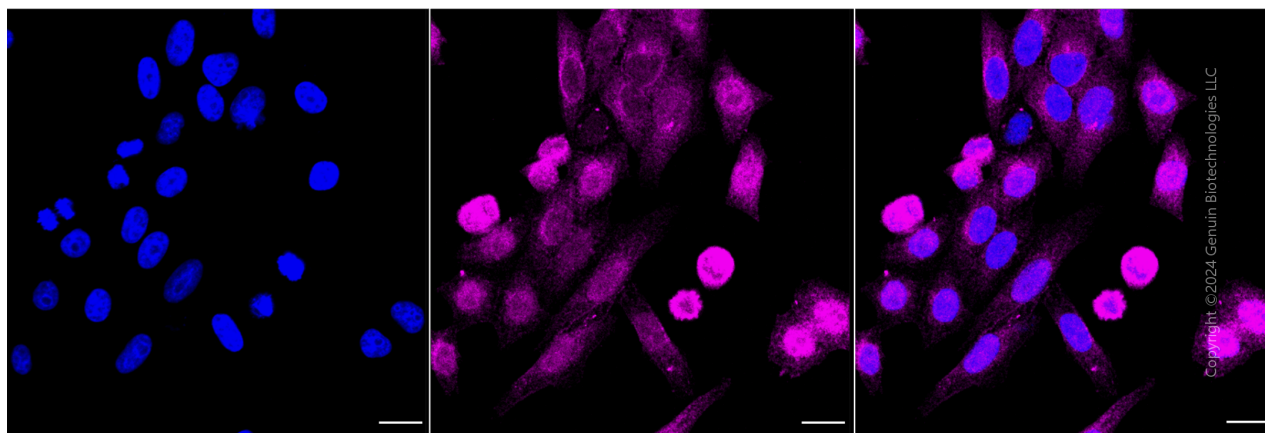
SUPPORT

SUPPORT@GENUINBIOTECH.COM
TEL: +1-540-855-7041

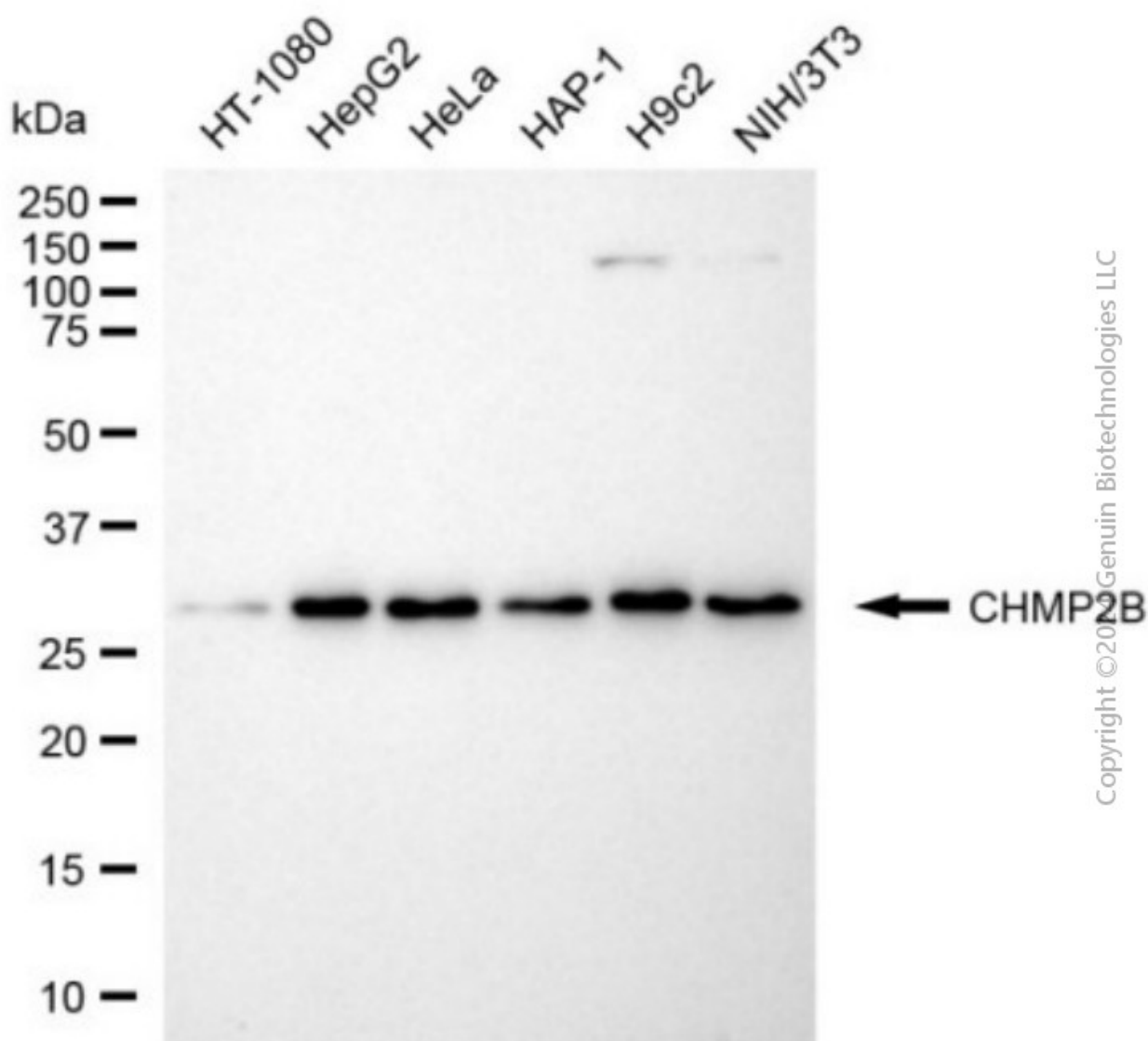
ORDERS

SALES@GENUINBIOTECH.COM
FAX: +1-540-855-7041

WWW.GENUINBIOTECH.COM



Immunocytochemical staining of HepG2 cells with anti-CHMP2B antibody (Cat#3917, 1:1,000). Nuclei were stained blue with DAPI; CHMP2B was stained magenta with Alexa Fluor® 647. Images were taken using Leica stellaris 5. Protein abundance based on laser Intensity and smart gain: Medium. Scale bar, 20 μ m.



Western blotting analysis using anti-CHMP2B antibody (Cat#3917). Total cell lysates (30 µg) from various cell lines were loaded and separated by SDS-PAGE. The blot was incubated with anti-CHMP2B antibody (Cat#3917, 1:5,000) and HRP-conjugated goat anti-rabbit secondary antibody (Cat#201, 1:20,000) respectively. Image was developed using NaQ™ ECL Substrate Kit (Cat#716).