

Anti-Amyloid beta precursor like protein 2 Recombinant Rabbit Monoclonal Antibody



Catalog #: 3919

Aliases

APLP2; Amyloid Beta Precursor Like Protein 2; APPH 2; Amyloid Beta (A4) Precursor-Like Protein 2; APPL2; Sperm Membrane Protein YWK-II; CDEI Box-Binding Protein; APLP-2; CDEBP; Amyloid Precursor Protein Homolog HSD-2; Testicular Tissue Protein Li 23; Amyloid Protein Homolog; Amyloid-Like Protein 2

Background

Gene Name: APLP2

NCBI Gene Entry: [334](#)

UniProt Entry: [Q06481](#)

Application Information

Molecular Weight: Predicted, 87 kDa; observed, 90-120 kDa

Clonality: Rabbit monoclonal antibody

Clone ID: 24GB8685

Species Reactivity: Human, mouse, rat

Applications Tested: Western blotting (WB), flow cytometry (FCM), immunocytochemistry (IC)

Immunogen

A synthesized peptide derived from human APLP2

Isotype

Rabbit IgG

Storage Buffer

Supplied in PBS (pH 7.4) containing 50% glycerol, and 0.02% sodium azide.

Storage

Store at -20 °C for one year.

Recommended Dilutions

Western Blotting (WB): 1:1,000-1:5,000

Flow Cytometry (FCM): 1:2,000

Immunocytochemistry (IC): 1:100-1:1,000

SUPPORT

SUPPORT@GENUINBIOTECH.COM
TEL: +1-540-855-7041

ORDERS

SALES@GENUINBIOTECH.COM
FAX: +1-540-855-7041

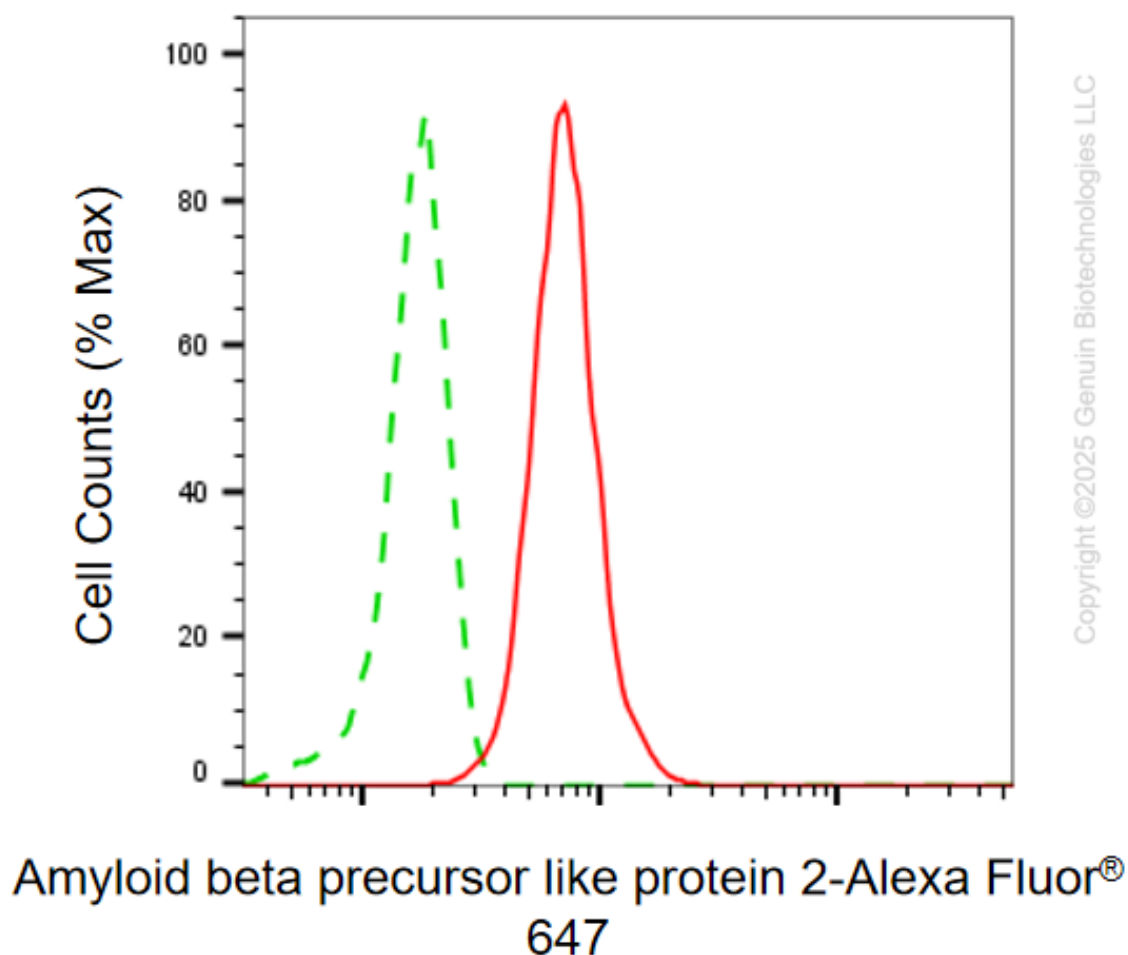
WWW.GENUINBIOTECH.COM

Anti-Amyloid beta precursor like protein 2 Recombinant Rabbit Monoclonal Antibody

PAGE 2

Note: This product is for research use only.

Validation Data



Flow cytometric analysis of Amyloid beta precursor like protein 2 expression in HepG2 cells using anti-Amyloid beta precursor like protein 2 antibody (Cat#3919, 1:2,000). Green, isotype control; red, Amyloid beta precursor like protein 2.

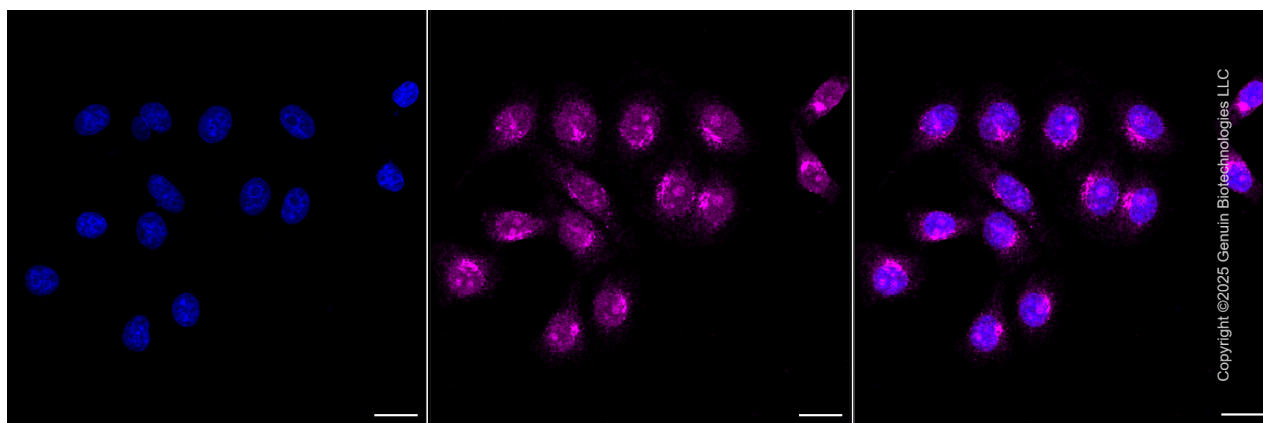
SUPPORT

SUPPORT@GENUINBIOTECH.COM
TEL: +1-540-855-7041

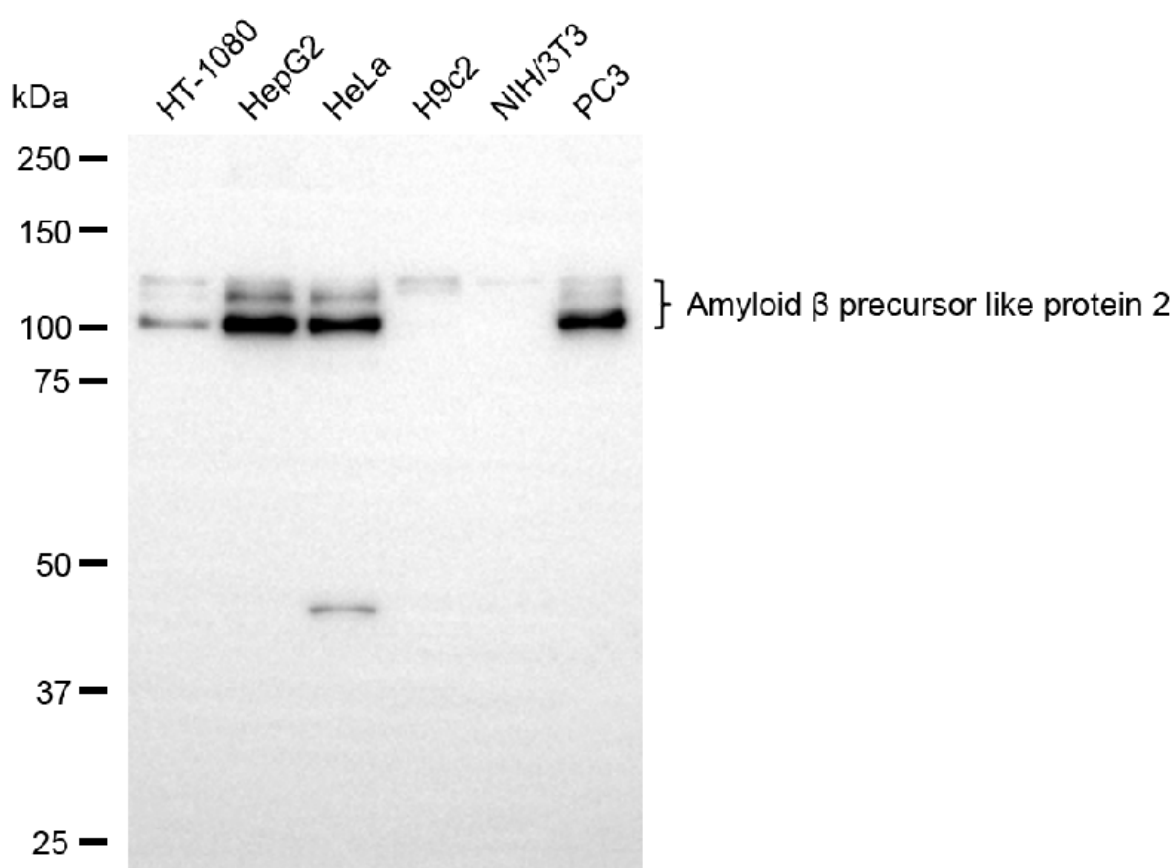
ORDERS

SALES@GENUINBIOTECH.COM
FAX: +1-540-855-7041

WWW.GENUINBIOTECH.COM



Immunocytochemical staining of HepG2 cells with anti-Amyloid beta precursor like protein 2 antibody (Cat#3919, 1:1,000) . Nuclei were stained blue with DAPI; Amyloid beta precursor like protein 2 was stained magenta with Alexa Fluor® 647. Images were taken using Leica stellaris 5. Protein abundance based on laser Intensity and smart gain: High. Scale bar, 20 μ m.



Western blotting analysis using anti-amyloid beta precursor like protein 2 antibody (Cat#3919). Total cell lysates (30 μ g) from various cell lines were loaded and separated by SDS-PAGE. The blot was incubated with anti-amyloid beta precursor like protein 2 antibody (Cat#3919, 1:5,000) and HRP-conjugated goat anti-rabbit secondary antibody (Cat#201, 1:20,000) respectively. Image was developed using NaQ™ ECL Substrate Kit (Cat#716).

Anti-Amyloid beta precursor like protein 2 Recombinant Rabbit Monoclonal Antibody

PAGE 4

SUPPORT

SUPPORT@GENUINBIOTECH.COM
TEL: +1-540-855-7041

ORDERS

SALES@GENUINBIOTECH.COM
FAX: +1-540-855-7041

WWW.GENUINBIOTECH.COM