

Anti-Arg2 Recombinant Rabbit Monoclonal Antibody



Catalog #: 3921

Aliases

ARG2; Arginase 2; Arginase-2, Mitochondrial; Kidney-Type Arginase; Non-Hepatic Arginase; Arginase, Type II; Type II Arginase; Arginase II; EC 3.5.3.1; L-Arginine Amidinohydrolase; L-Arginine Ureahydrolase; Nonhepatic Arginase; Kidney Arginase; EC 3.5.3

Background

Gene Name: ARG2

NCBI Gene Entry: [384](#)

UniProt Entry: [P78540](#)

Application Information

Molecular Weight: Predicted, 39 kDa; observed, 39 kDa

Clonality: Rabbit monoclonal antibody

Clone ID: 24GB8695

Species Reactivity: Human, rat

Applications Tested: Western blotting (WB), flow cytometry (FCM), immunocytochemistry (IC)

Immunogen

A synthesized peptide derived from human Arg2

Isotype

Rabbit IgG

Storage Buffer

Supplied in PBS (pH 7.4) containing 50% glycerol, and 0.02% sodium azide.

Storage

Store at -20 °C for one year.

Recommended Dilutions

Western Blotting (WB): 1:1,000-1:5,000

Flow Cytometry (FCM): 1:2,000

Immunocytochemistry (IC): 1:100-1:1,000

Note: This product is for research use only.

SUPPORT

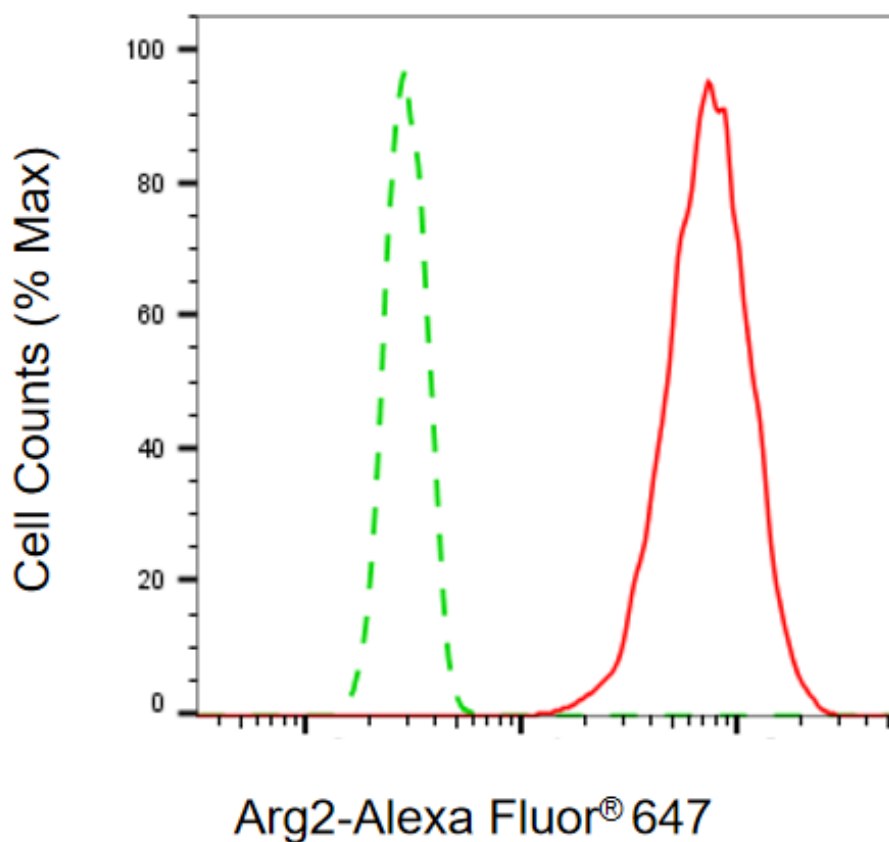
SUPPORT@GENUINBIOTECH.COM
TEL: +1-540-855-7041

ORDERS

SALES@GENUINBIOTECH.COM
FAX: +1-540-855-7041

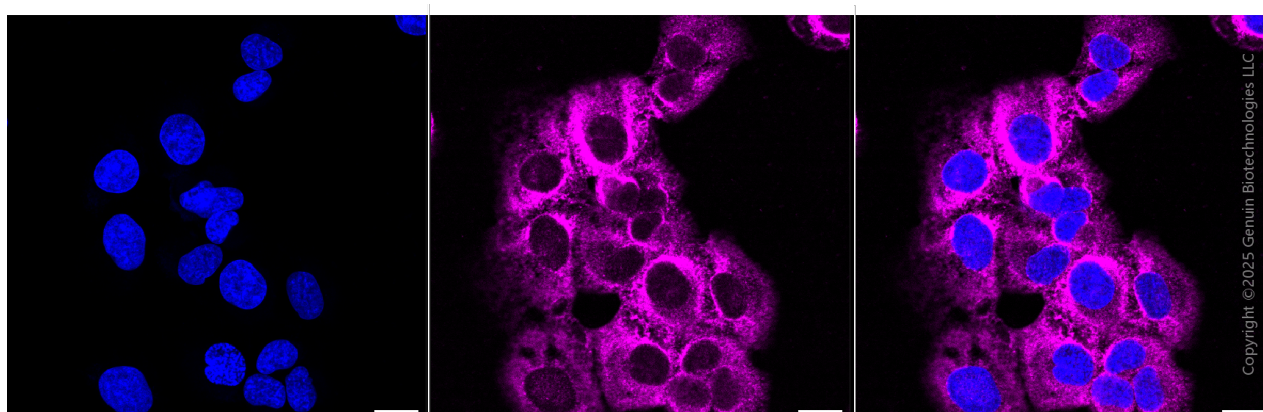
WWW.GENUINBIOTECH.COM

Validation Data



Copyright ©2025 Genuin Biotechnologies LLC

Flow cytometric analysis of Arg2 expression in HT-1080 cells using anti-Arg2 antibody (Cat#3921, 1:2,000). Green, isotype control; red, Arg2.



Immunocytochemical staining of HT-1080 cells with anti-Arg2 antibody (Cat#3921, 1:1,000) . Nuclei were stained blue with DAPI; Arg2 was stained magenta with Alexa Fluor® 647. Images were taken using Leica stellaris 5. Protein abundance based on laser Intensity and smart gain: Medium. Scale bar, 20 µm.

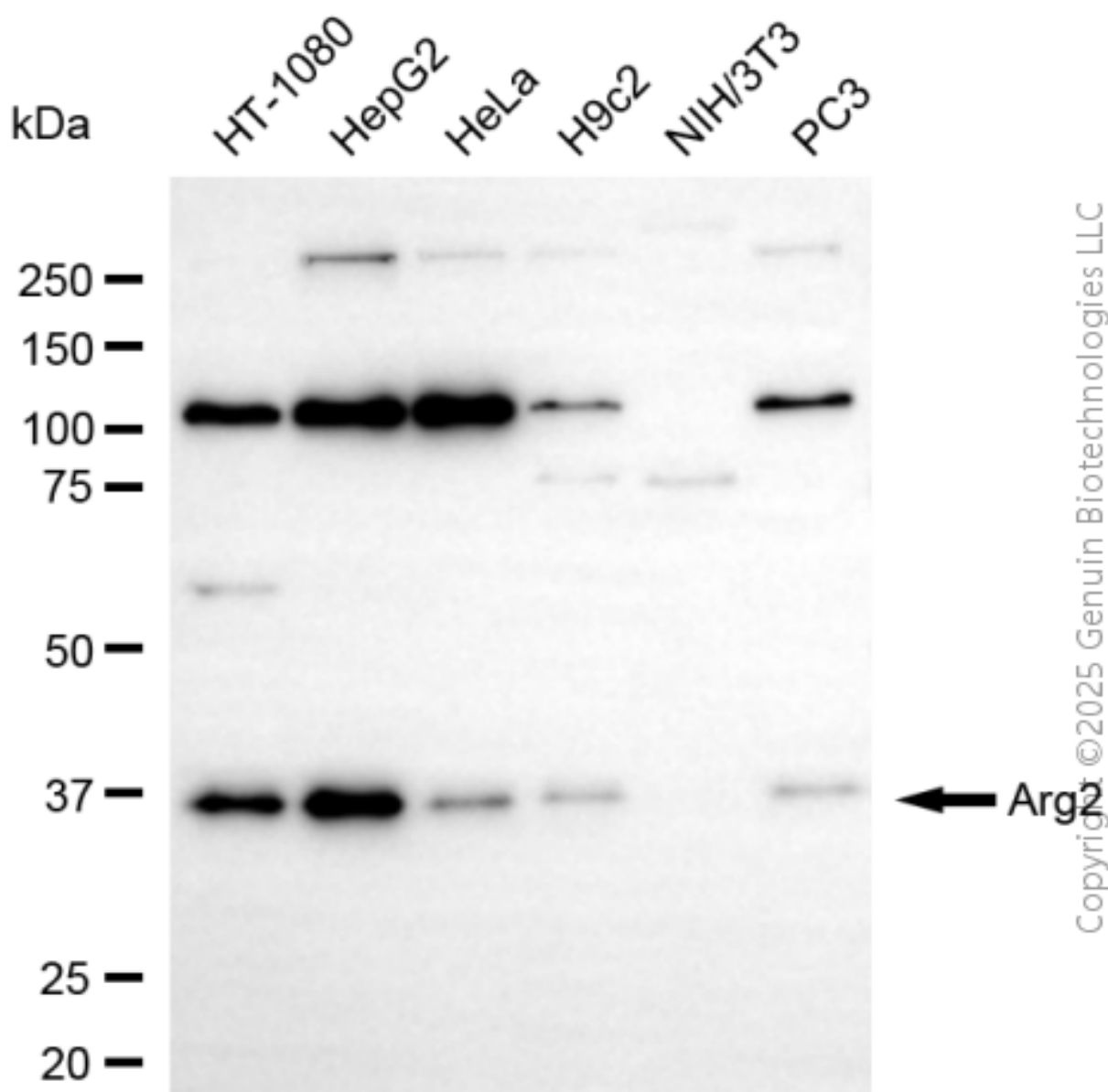
SUPPORT

SUPPORT@GENUINBIOTECH.COM
TEL: +1-540-855-7041

ORDERS

SALES@GENUINBIOTECH.COM
FAX: +1-540-855-7041

WWW.GENUINBIOTECH.COM



Western blotting analysis using anti-arg2 antibody (Cat#3921). Total cell lysates (30 μ g) from various cell lines were loaded and separated by SDS-PAGE. The blot was incubated with anti-arg2 antibody (Cat#3921, 1:5,000) and HRP-conjugated goat anti-rabbit secondary antibody (Cat#201, 1:20,000) respectively. Image was developed using NaQ™ ECL Substrate Kit (Cat#716).