

Anti-Prolyl 4-hydroxylase subunit beta Recombinant Rabbit Monoclonal Antibody



Catalog #: 3922

Aliases

Prolyl 4-Hydroxylase Subunit Beta; PDIA1; PDI; ERBA2L; PROHB; PO4HB; PO4DB; DSI; GIT; Procollagen-Proline, 2-Oxoglutarate 4-Dioxygenase (Proline 4-Hydroxylase), Beta Polypeptide; Protein Disulfide Isomerase Family A, Member; Protein Disulfide Isomerase-Associated; Cellular Thyroid Hormone-Binding Protein; Prolyl 4-Hydroxylase, Beta Polypeptide; Collagen Prolyl 4-Hydroxylase Beta; Protein Disulfide-Isomerase; EC 5.3.4.1; P4Hbeta; P55; Procollagen-Proline, 2-Oxoglutarate 4-Dioxygenase (Proline 4-Hydroxylase), Beta Polypeptide (Protein Disulfide Isomerase; Thyroid Hormone Binding Protein P55); Procollagen-Proline, 2-Oxoglutarate 4-Dioxygenase (Proline 4-Hydroxylase), Beta Polypeptide (Protein Disulfide Isomerase-Associated 1) Protein Disulfide Isomerase/Oxidoreductase; Glutathione-Insulin Transhydrogenase; Thyroid Hormone-Binding Protein P55; Testicular Secretory Protein Li 32; Protocollagen Hydroxylase; P4HBETA; CLCRP1; PHDB;

Background

Gene Name: P4HB

NCBI Gene Entry: [5034](#)

UniProt Entry: [P07237](#)

Application Information

Molecular Weight: Predicted, 57 kDa; observed, 57 kDa

Clonality: Rabbit monoclonal antibody

Clone ID: 24GB8700

Species Reactivity: Human, mouse, rat

Applications Tested: Western blotting (WB), flow cytometry (FCM)

Immunogen

A synthesized peptide derived from human P4HB

Isotype

Rabbit IgG

Storage Buffer

Supplied in PBS (pH 7.4) containing 50% glycerol, and 0.02% sodium azide.

Storage

Store at -20 °C for one year.

SUPPORT

SUPPORT@GENUINBIOTECH.COM
TEL: +1-540-855-7041

ORDERS

SALES@GENUINBIOTECH.COM
FAX: +1-540-855-7041

WWW.GENUINBIOTECH.COM

Anti-Prolyl 4-hydroxylase subunit beta Recombinant Rabbit Monoclonal Antibody

PAGE 2

Recommended Dilutions

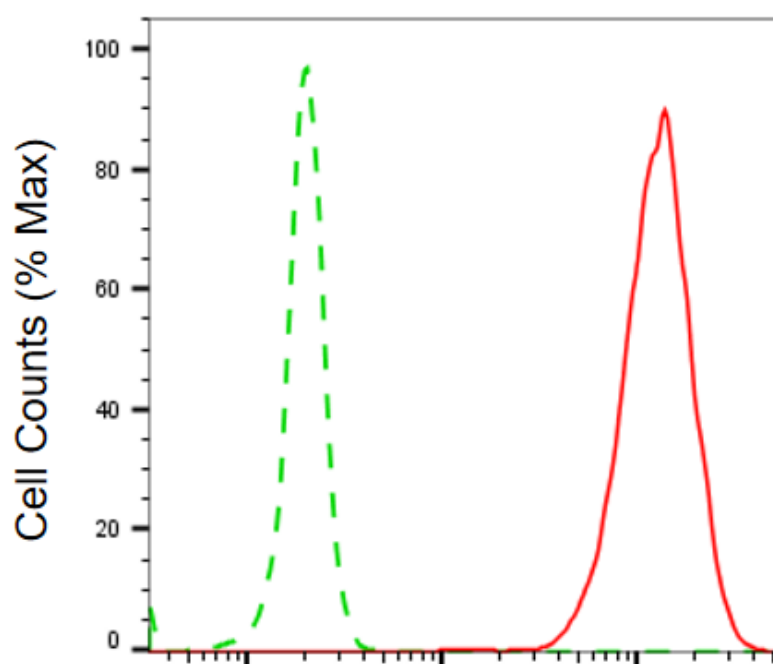
Western Blotting (WB): 1:1,000-1:5,000

Flow Cytometry (FCM): 1:2,000

Immunocytochemistry (IC): 1:100-1:1,000

Note: This product is for research use only.

Validation Data



Prolyl 4-hydroxylase subunit beta-Alexa Fluor® 647

Copyright ©2025 Genuin Biotechnologies LLC

Flow cytometric analysis of Prolyl 4-hydroxylase subunit beta expression in C2C12 cells using anti-Prolyl 4-hydroxylase subunit beta antibody (Cat#3922, 1:2,000). Green, isotype control; red, Prolyl 4-hydroxylase subunit beta.

SUPPORT

SUPPORT@GENUINBIOTECH.COM
TEL: +1-540-855-7041

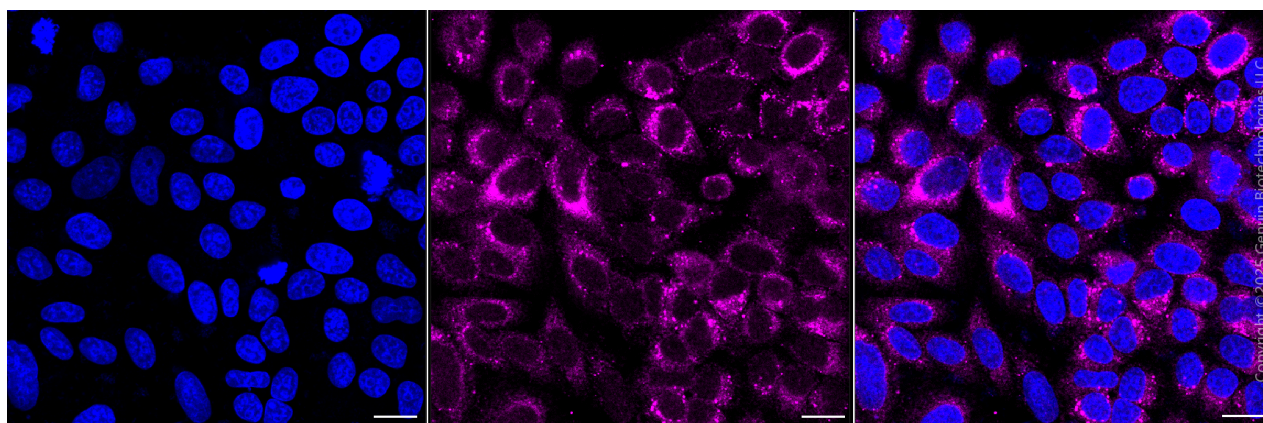
ORDERS

SALES@GENUINBIOTECH.COM
FAX: +1-540-855-7041

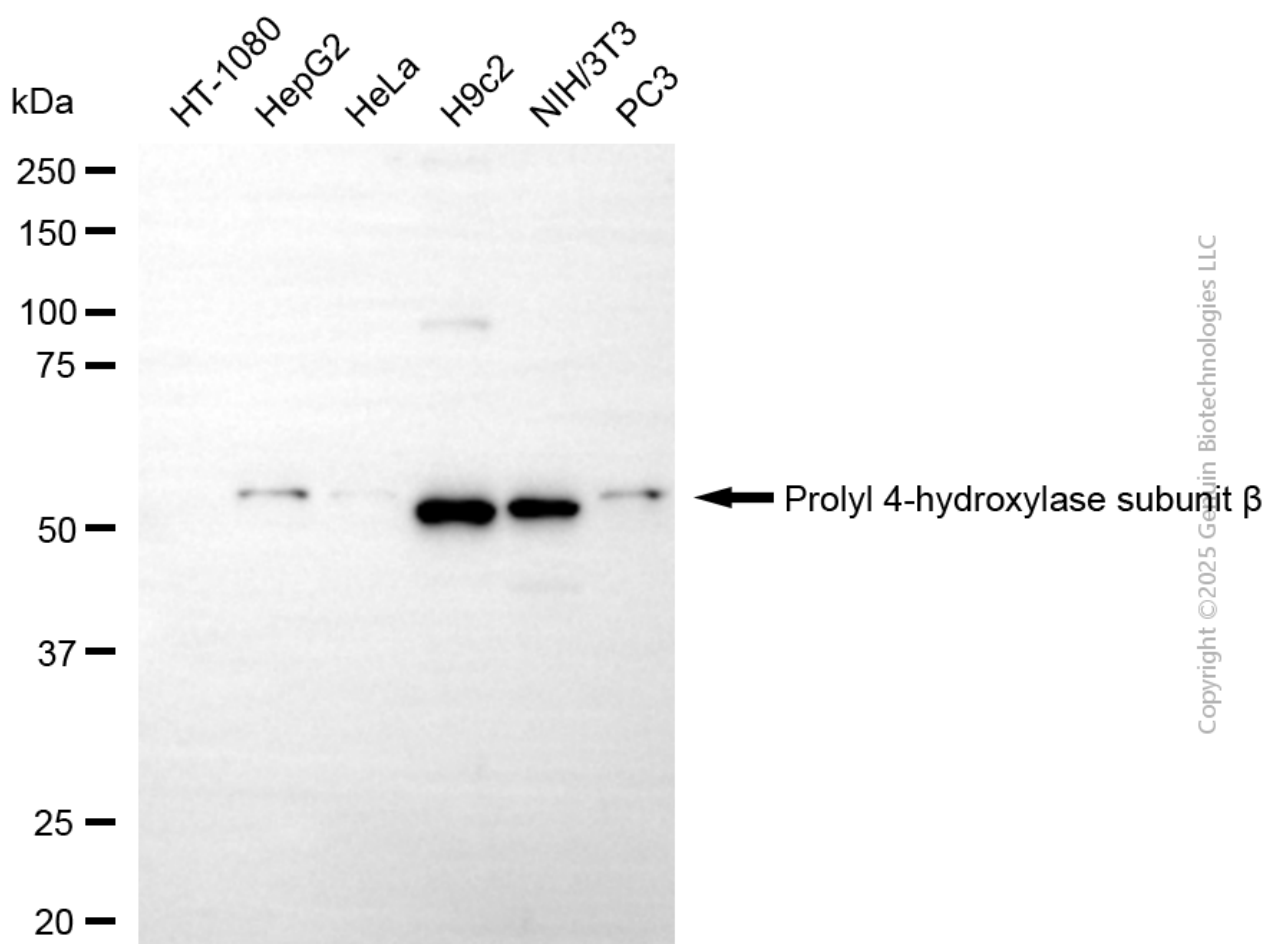
WWW.GENUINBIOTECH.COM

Anti-Prolyl 4-hydroxylase subunit beta Recombinant Rabbit Monoclonal Antibody

PAGE 3



Immunocytochemical staining of HepG2 cells with anti-Prolyl 4-hydroxylase subunit beta antibody (Cat#3922, 1:1,000). Nuclei were stained blue with DAPI; Prolyl 4-hydroxylase subunit beta was stained magenta with Alexa Fluor® 647. Images were taken using Leica stellaris 5. Protein abundance based on laser Intensity and smart gain: Medium. Scale bar, 20 μ m.



Western blotting analysis using anti-prolyl 4-hydroxylase subunit beta antibody (Cat#3922). Total cell lysates (30 μ g) from various cell lines were loaded and separated by SDS-PAGE. The blot was incubated with anti-prolyl 4-hydroxylase subunit beta antibody (Cat#3922, 1:5,000) and HRP-

SUPPORT

SUPPORT@GENUINBIOTECH.COM
TEL: +1-540-855-7041

ORDERS

SALES@GENUINBIOTECH.COM
FAX: +1-540-855-7041

WWW.GENUINBIOTECH.COM

Anti-Prolyl 4-hydroxylase subunit beta Recombinant Rabbit Monoclonal Antibody

PAGE 4

conjugated goat anti-rabbit secondary antibody (Cat#201, 1:20,000) respectively. Image was developed using NaQ™ ECL Substrate Kit (Cat#716).

SUPPORT

SUPPORT@GENUINBIOTECH.COM
TEL: +1-540-855-7041

ORDERS

SALES@GENUINBIOTECH.COM
FAX: +1-540-855-7041

WWW.GENUINBIOTECH.COM