

Anti-RAN binding protein 9 Recombinant Rabbit Monoclonal Antibody



Catalog #: 3924

Aliases

RANBP9; RAN Binding Protein 9; RANBPM; Ran Binding Protein In The Microtubule Organizing Center; Ran-Binding Protein 9; Ran-Binding Protein M; RanBPM; RanBP7; BPM-L; BPM90; Novel Centrosomal Protein RanBPM; Ran Binding Protein, Centrosomal; RanBP9

Background

Gene Name: RANBP9

NCBI Gene Entry: [10048](#)

UniProt Entry: [Q96S59](#)

Application Information

Molecular Weight: Predicted, 78 kDa; observed, 91 kDa

Clonality: Rabbit monoclonal antibody

Clone ID: 24GB8710

Species Reactivity: Human, mouse, rat

Applications Tested: Western blotting (WB), flow cytometry (FCM), immunocytochemistry (IC)

Immunogen

A synthesized peptide derived from human RanBP9

Isotype

Rabbit IgG

Storage Buffer

Supplied in PBS (pH 7.4) containing 50% glycerol, and 0.02% sodium azide.

Storage

Store at -20 °C for one year.

Recommended Dilutions

Western Blotting (WB): 1:1,000-1:5,000

Flow Cytometry (FCM): 1:2,000

Immunocytochemistry (IC): 1:100-1:1,000

Note: This product is for research use only.

SUPPORT

SUPPORT@GENUINBIOTECH.COM
TEL: +1-540-855-7041

ORDERS

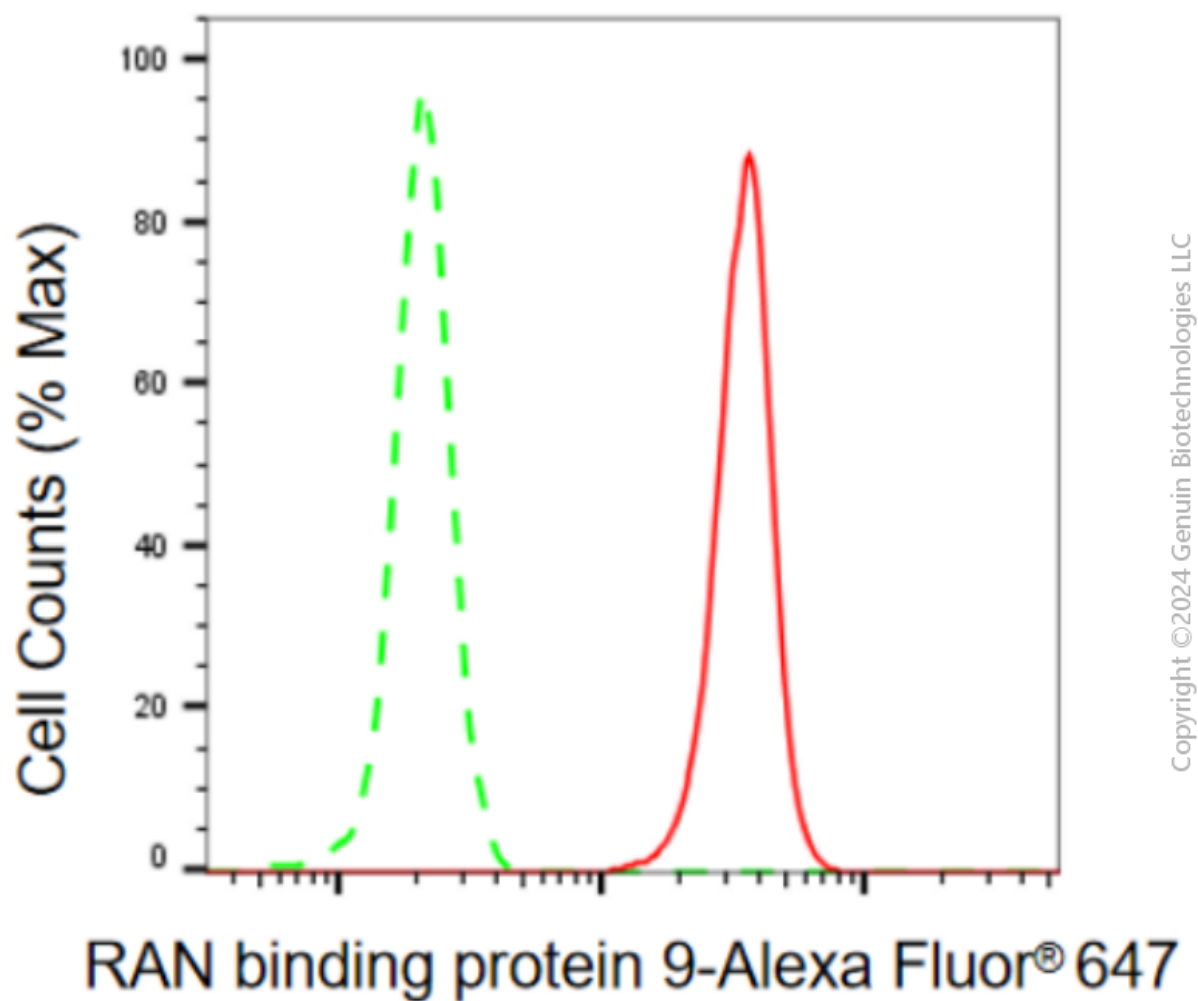
SALES@GENUINBIOTECH.COM
FAX: +1-540-855-7041

WWW.GENUINBIOTECH.COM

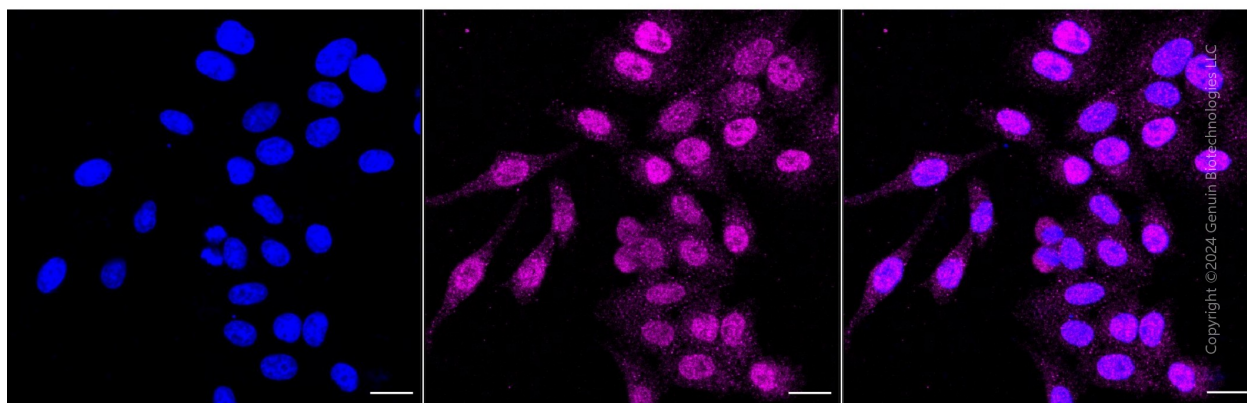
Anti-RAN binding protein 9 Recombinant Rabbit Monoclonal Antibody

PAGE 2

Validation Data



Flow cytometric analysis of RAN binding protein 9 expression in HepG2 cells using anti-RAN binding protein 9 antibody (Cat#3924, 1:2,000). Green, isotype control; red, RAN binding protein 9.



SUPPORT

SUPPORT@GENUINBIOTECH.COM
TEL: +1-540-855-7041

ORDERS

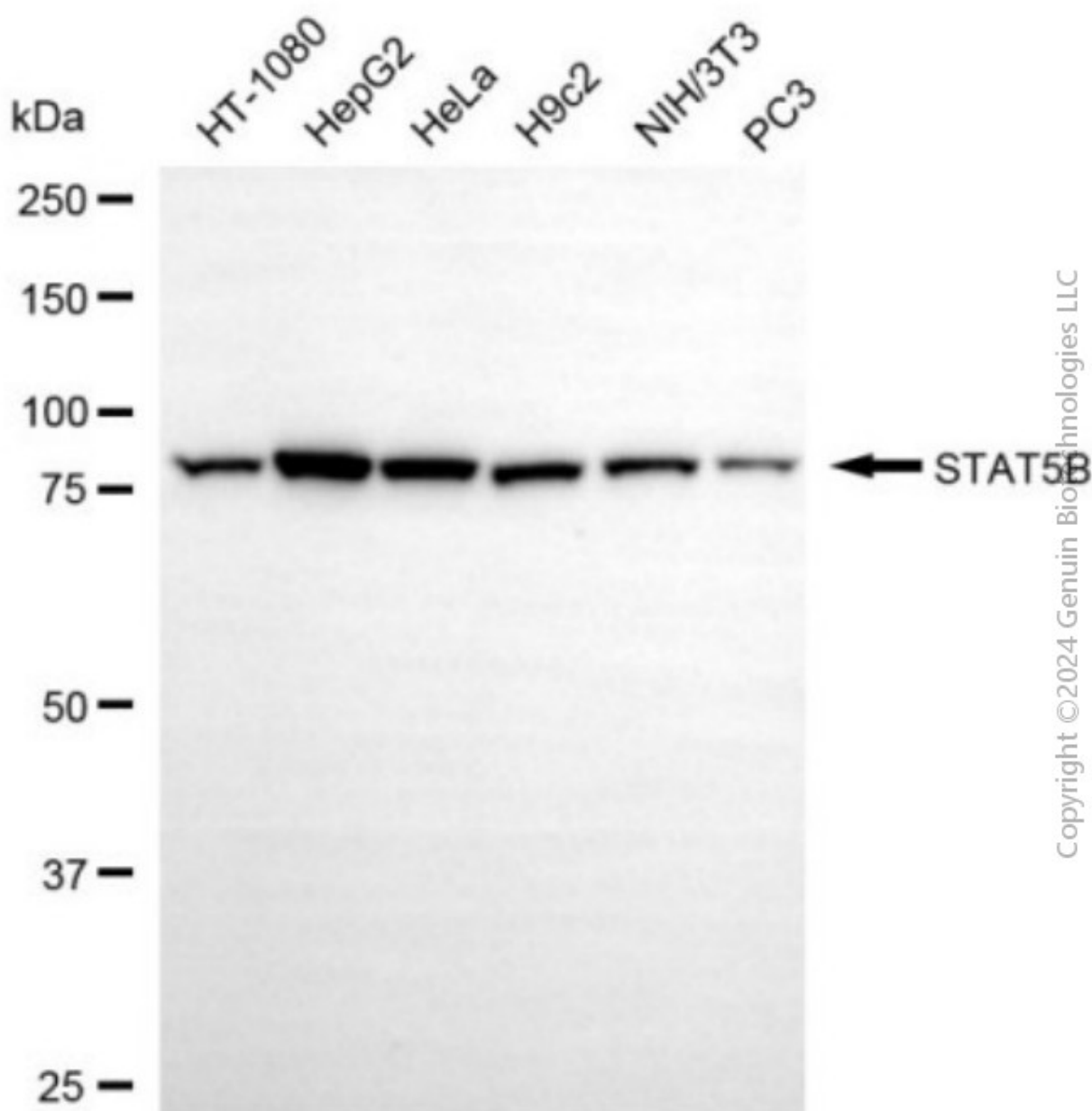
SALES@GENUINBIOTECH.COM
FAX: +1-540-855-7041

WWW.GENUINBIOTECH.COM

Anti-RAN binding protein 9 Recombinant Rabbit Monoclonal Antibody

PAGE 3

Immunocytochemical staining of HepG2 cells with anti-RAN binding protein 9 antibody (Cat#3924, 1:1,000). Nuclei were stained blue with DAPI; RAN binding protein 9 was stained magenta with Alexa Fluor® 647. Images were taken using Leica stellaris 5. Protein abundance based on laser Intensity and smart gain: Medium. Scale bar, 20 μ m.



Western blotting analysis using anti-RAN binding protein 9 antibody (Cat#3924). Total cell lysates (30 μ g) from various cell lines were loaded and separated by SDS-PAGE. The blot was incubated with anti-RAN binding protein 9 antibody (Cat#3924, 1:5,000) and HRP-conjugated goat anti-rabbit secondary antibody (Cat#201, 1:20,000) respectively. Image was developed using NaQ™ ECL Substrate Kit (Cat#716).

SUPPORT

SUPPORT@GENUINBIOTECH.COM
TEL: +1-540-855-7041

ORDERS

SALES@GENUINBIOTECH.COM
FAX: +1-540-855-7041

WWW.GENUINBIOTECH.COM