

Anti-LPP Recombinant Rabbit Monoclonal Antibody



Catalog #: 3928

Aliases

LIM Domain Containing Preferred Translocation Partner In Lipoma; LIM Domain-Containing Preferred Translocation Partner In Lipoma; Lipoma-Preferred Partner; Lipoma Preferred Partner Gene; Lipoma Preferred Partner; LIM Protein

Background

Gene Name: LPP

NCBI Gene Entry: [4026](#)

UniProt Entry: [Q93052](#)

Application Information

Molecular Weight: Predicted, 66 kDa; observed, 70 kDa

Clonality: Rabbit monoclonal antibody

Clone ID: 24GB8730

Species Reactivity: Human, mouse, rat

Applications Tested: Western blotting (WB), flow cytometry (FCM), immunocytochemistry (IC)

Immunogen

A synthesized peptide derived from human LPP

Isotype

Rabbit IgG

Storage Buffer

Supplied in PBS (pH 7.4) containing 50% glycerol, and 0.02% sodium azide.

Storage

Store at -20 °C for one year.

Recommended Dilutions

Western Blotting (WB): 1:1,000-1:5,000

Flow Cytometry (FCM): 1:2,000

Immunocytochemistry (IC): 1:100-1:1,000

Note: This product is for research use only.

SUPPORT

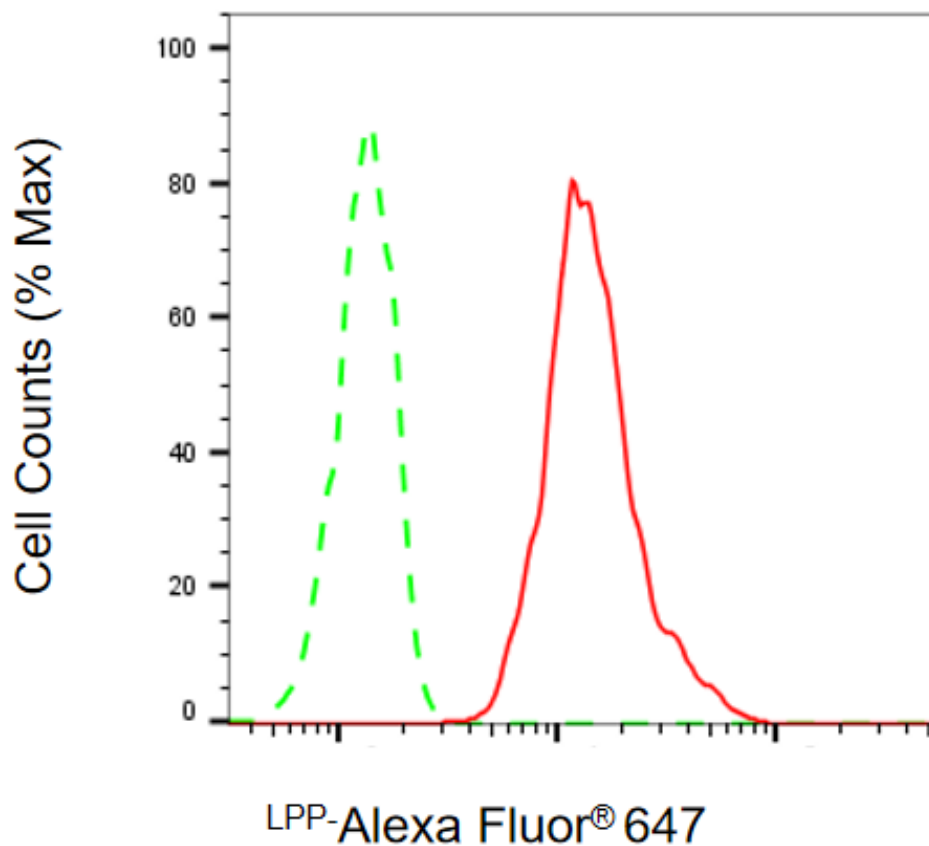
SUPPORT@GENUINBIOTECH.COM
TEL: +1-540-855-7041

ORDERS

SALES@GENUINBIOTECH.COM
FAX: +1-540-855-7041

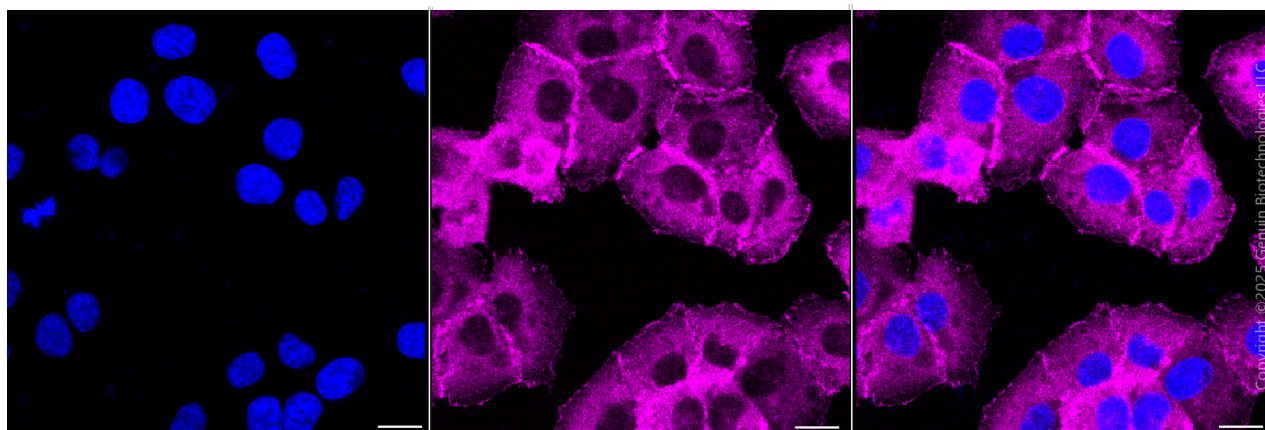
WWW.GENUINBIOTECH.COM

Validation Data



Copyright ©2025 Genuin Biotechnologies LLC

Flow cytometric analysis of LPP expression in HT-1080 cells using anti-LPP antibody (Cat#3928, 1:2,000). Green, isotype control; red, LPP.



Immunocytochemical staining of HT-1080 cells with anti-LPP antibody (Cat#3928, 1:1,000). Nuclei were stained blue with DAPI; LPP was stained magenta with Alexa Fluor® 647. Images were taken using Leica stellaris 5. Protein abundance based on laser Intensity and smart gain:

SUPPORT

SUPPORT@GENUINBIOTECH.COM
TEL: +1-540-855-7041

ORDERS

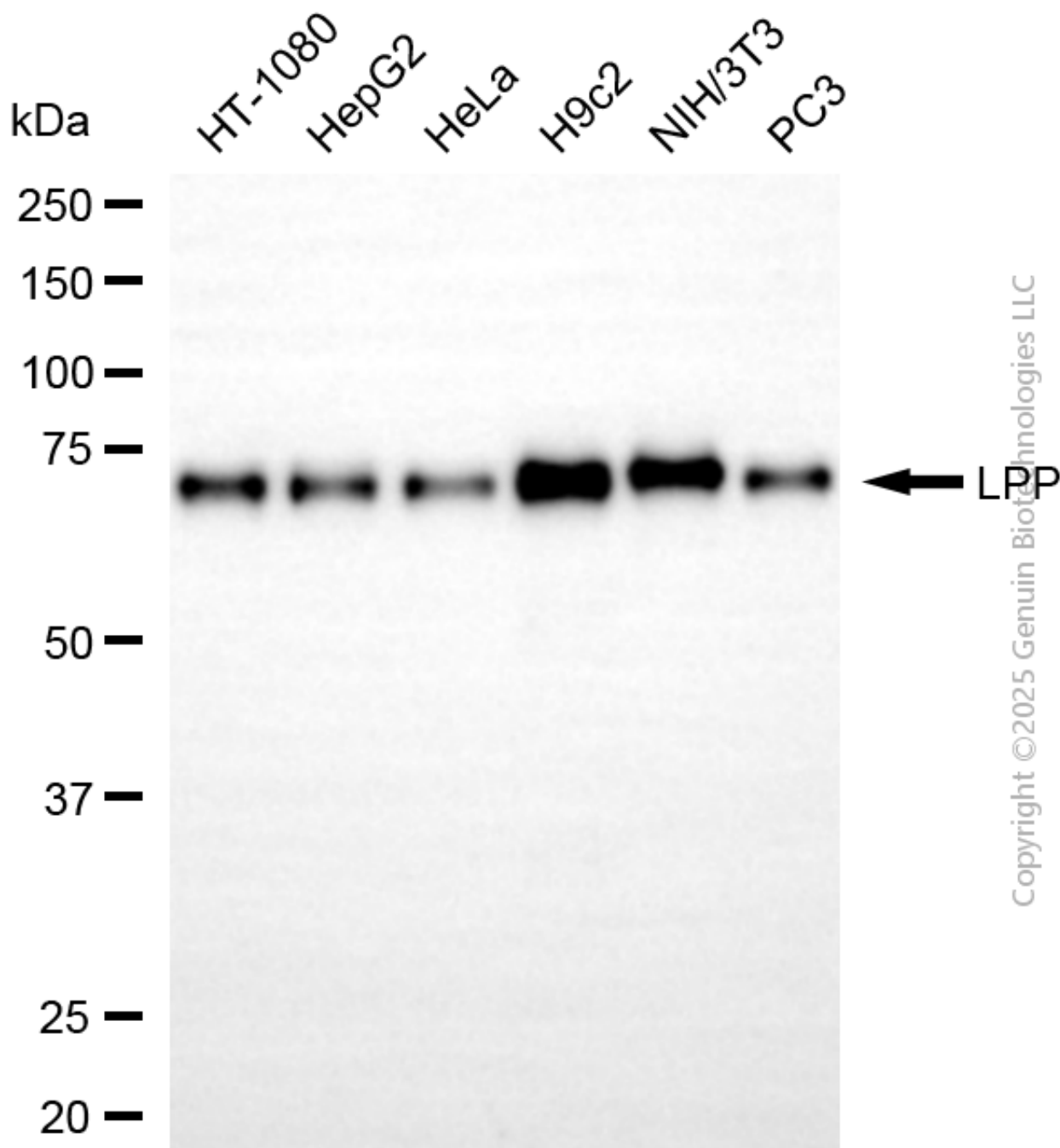
SALES@GENUINBIOTECH.COM
FAX: +1-540-855-7041

WWW.GENUINBIOTECH.COM

Anti-LPP Recombinant Rabbit Monoclonal Antibody

PAGE 3

Medium. Scale bar, 20 μ m.



Western blotting analysis using anti-LPP antibody (Cat#3928). Total cell lysates (20 μ g) from various cell lines were loaded and separated by SDS-PAGE. The blot was incubated with anti-LPP antibody (Cat#3928, 1:5,000) and HRP-conjugated goat anti-rabbit secondary antibody (Cat#201, 1:20,000) respectively. Image was developed using NaQ™ ECL Substrate Kit (Cat#716).

SUPPORT

SUPPORT@GENUINBIOTECH.COM
TEL: +1-540-855-7041

ORDERS

SALES@GENUINBIOTECH.COM
FAX: +1-540-855-7041

WWW.GENUINBIOTECH.COM