

# Anti-CC2D1A Recombinant Rabbit Monoclonal Antibody



**Catalog #: 3929**

## Aliases

CC2D1A; Coiled-Coil And C2 Domain Containing 1A; Five Prime Repressor Element Under Dual; Repression-Binding Protein 1; Akt Kinase-Interacting Protein 1; MRT3; TAPE; Coiled-Coil And C2 Domain-Containing Protein 1A; FRE Under Dual Repression-Binding Protein 1; Putative NF-Kappa-B-Activating Protein 023N; TBK1-Associated Protein In Endolysosomes 2; Lethal (2) Giant Discs Homolog 2; FLJ20241; Freud-1; FREUD-1; Aki-1; Lgd2; Five Repressor Element Under Dual Repression-Binding Protein 1; Mental Retardation, Nonsyndromic, Autosomal Recessive, 3; Putative NFkB Activating Protein; Freud-1/Aki1; AKI-1; LGD2; AKI1

## Background

Gene Name: CC2D1A

NCBI Gene Entry: [54862](#)

UniProt Entry: [Q6P1N0](#)

## Application Information

Molecular Weight: Predicted, 104 kDa; observed, 130 kDa

Clonality: Rabbit monoclonal antibody

Clone ID: 24GB8735

Species Reactivity: Human, mouse, rat

Applications Tested: Western blotting (WB), flow cytometry (FCM), immunocytochemistry (IC)

## Immunogen

A synthesized peptide derived from CC2D1A

## Isotype

Rabbit IgG

## Storage Buffer

Supplied in PBS (pH 7.4) containing 50% glycerol, and 0.02% sodium azide.

## Storage

Store at -20 °C for one year.

## Recommended Dilutions

Western Blotting (WB): 1:1,000-1:5,000

Flow Cytometry (FCM): 1:2,000

---

### SUPPORT

SUPPORT@GENUINBIOTECH.COM  
TEL: +1-540-855-7041

### ORDERS

SALES@GENUINBIOTECH.COM  
FAX: +1-540-855-7041

[WWW.GENUINBIOTECH.COM](http://WWW.GENUINBIOTECH.COM)

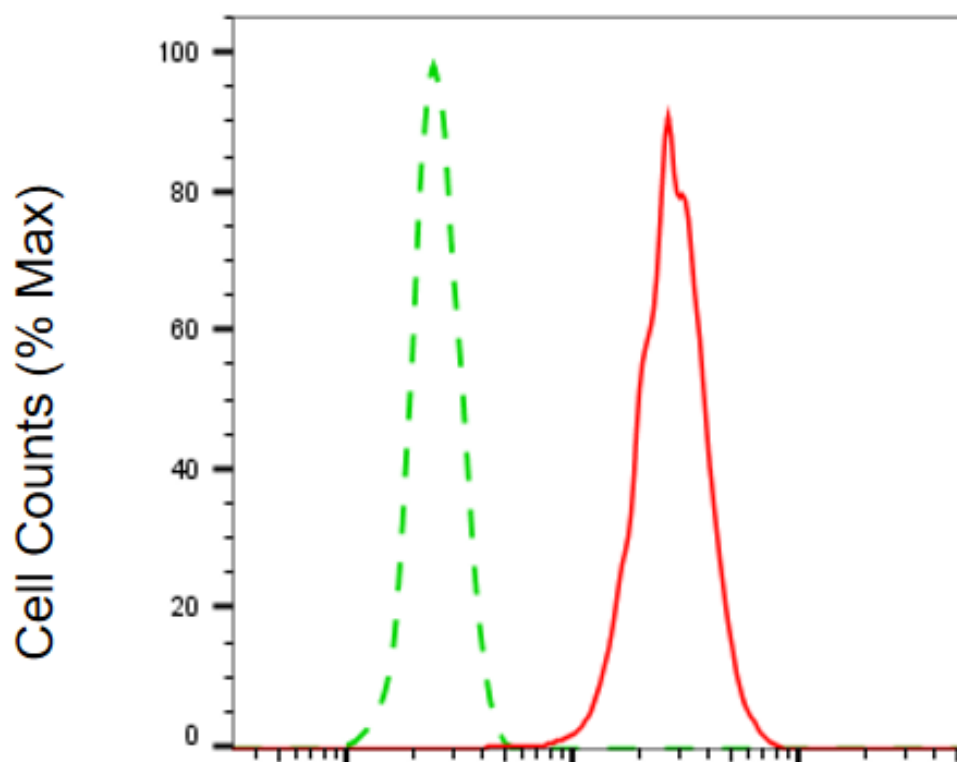
# Anti-CC2D1A Recombinant Rabbit Monoclonal Antibody

PAGE 2

Immunocytochemistry (IC): 1:100-1:1,000

**Note:** This product is for research use only.

## Validation Data



Copyright ©2025 Genuin Biotechnologies LLC

### CC2D1A-Alexa Fluor® 647

Flow cytometric analysis of CC2D1A expression in C2C12 cells using anti-CC2D1A antibody (Cat#3929, 1:2,000). Green, isotype control; red, CC2D1A.

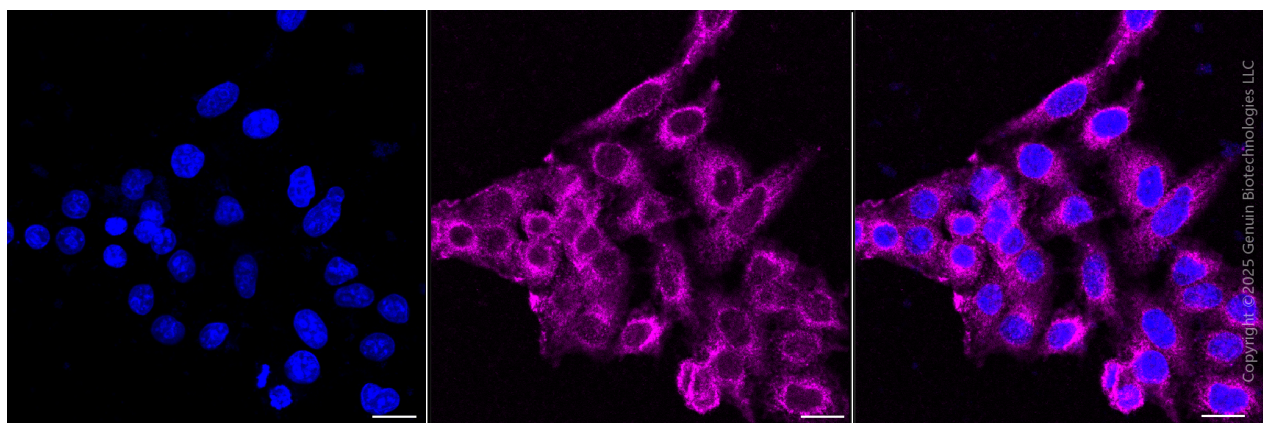
#### SUPPORT

SUPPORT@GENUINBIOTECH.COM  
TEL: +1-540-855-7041

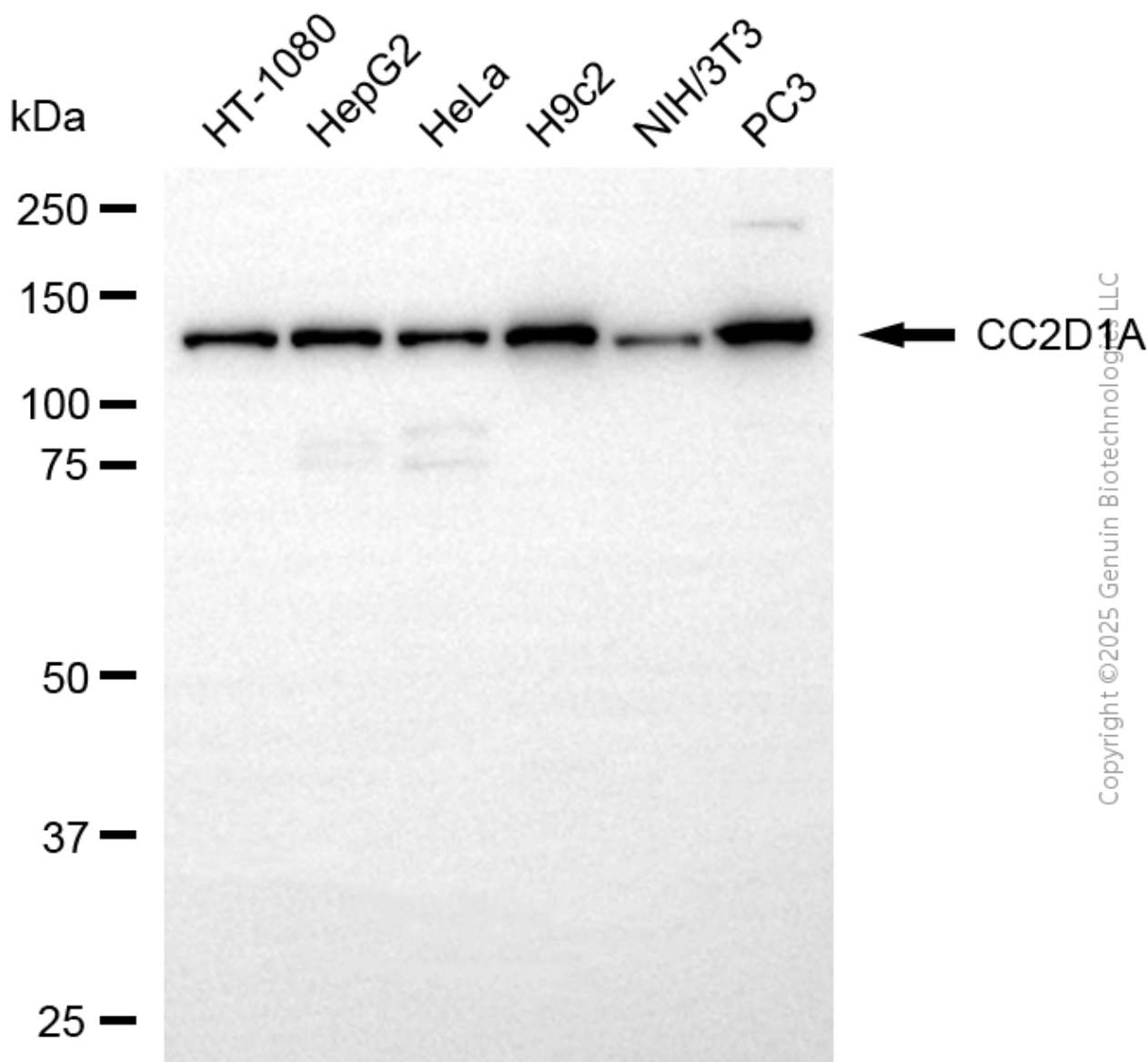
#### ORDERS

SALES@GENUINBIOTECH.COM  
FAX: +1-540-855-7041

[WWW.GENUINBIOTECH.COM](http://WWW.GENUINBIOTECH.COM)



Immunocytochemical staining of HepG2 cells with anti-CC2D1A antibody (Cat#3929, 1:1,000) . Nuclei were stained blue with DAPI; CC2D1A was stained magenta with Alexa Fluor® 647. Images were taken using Leica stellaris 5. Protein abundance based on laser Intensity and smart gain: Medium. Scale bar, 20  $\mu$ m.



Western blotting analysis using anti-CC2D1A antibody (Cat#3929). Total cell lysates (20  $\mu$ g) from various cell lines were loaded and separated by SDS-PAGE. The blot was incubated with anti-CC2D1A antibody (Cat#3929, 1:5,000) and HRP-conjugated goat anti-rabbit secondary antibody (Cat#201, 1:20,000) respectively. Image was developed using NaQ™ ECL Substrate Kit (Cat#716).