

# Anti-GTF2I Recombinant Rabbit Monoclonal Antibody



**Catalog #: 3939**

## Aliases

GTF2I; General Transcription Factor Ii; TFII-I; SPIN; BAP-135; BTKAP1; WBSCR6; IB291; DIWS; Bruton Tyrosine Kinase-Associated Protein 135; General Transcription Factor II-I; SRF-Phox1-Interacting Protein; GTFII-I; BAP135; Williams-Beuren Syndrome Chromosomal Region 6 Protein; Williams-Beuren Syndrome Chromosome Region 6; General Transcription Factor II, I; BTK-Associated Protein, 135kD; BTK-Associated Protein 135; WBS

## Background

Gene Name: GTF2I

NCBI Gene Entry: [2969](#)

UniProt Entry: [P78347](#)

## Application Information

Molecular Weight: Predicted, 113 kDa; observed, 135 kDa

Clonality: Rabbit monoclonal antibody

Clone ID: 24GB8785

Species Reactivity: Human, mouse, rat

Applications Tested: Western blotting (WB), flow cytometry (FCM), immunocytochemistry (IC)

## Immunogen

A synthesized peptide derived from human GTF2I

## Isotype

Rabbit IgG

## Storage Buffer

Supplied in PBS (pH 7.4) containing 50% glycerol, and 0.02% sodium azide.

## Storage

Store at -20 °C for one year.

## Recommended Dilutions

Western Blotting (WB): 1:1,000-1:5,000

Flow Cytometry (FCM): 1:2,000

Immunocytochemistry (IC): 1:100-1:1,000

---

### SUPPORT

SUPPORT@GENUINBIOTECH.COM  
TEL: +1-540-855-7041

### ORDERS

SALES@GENUINBIOTECH.COM  
FAX: +1-540-855-7041

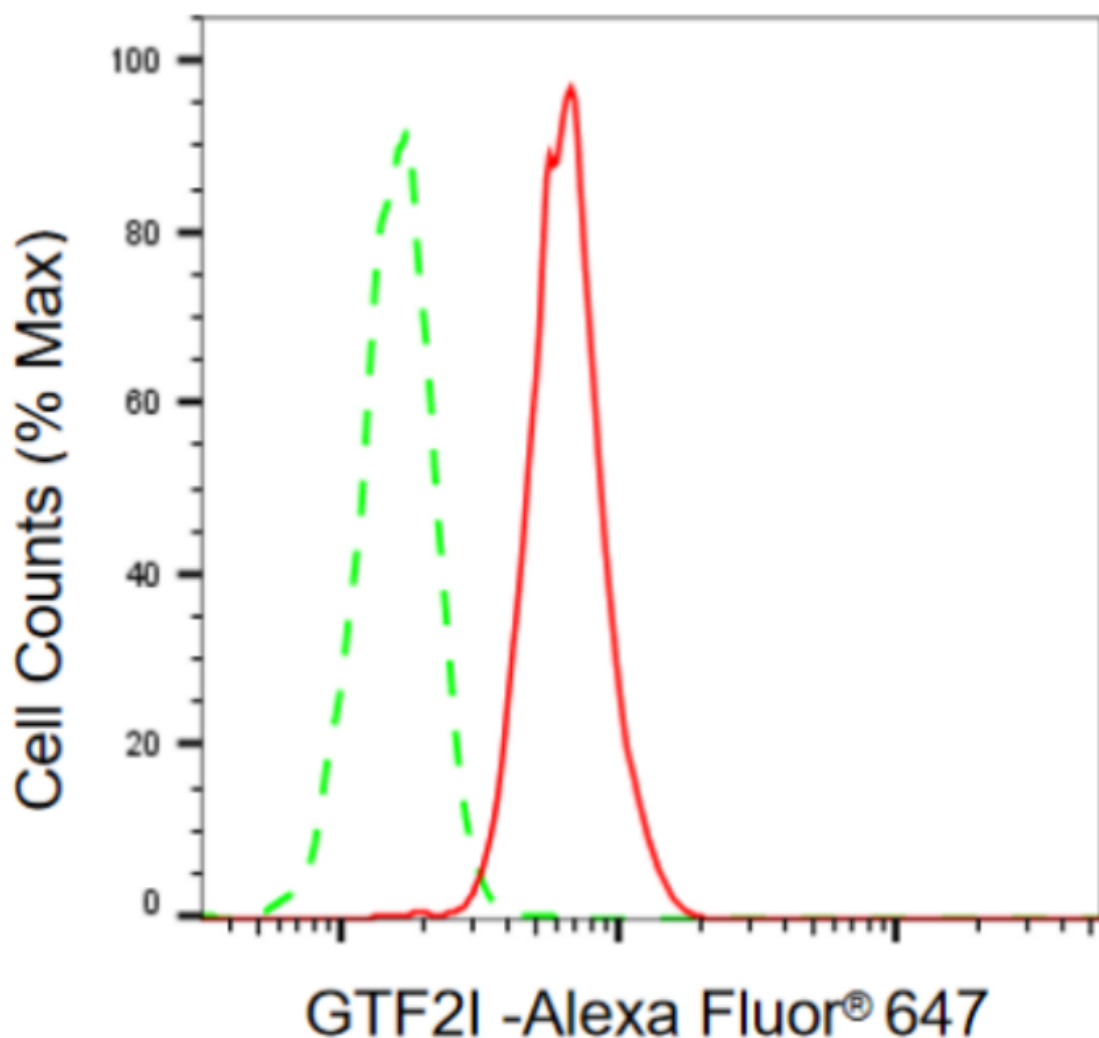
[WWW.GENUINBIOTECH.COM](http://WWW.GENUINBIOTECH.COM)

# Anti-GTF2I Recombinant Rabbit Monoclonal Antibody

PAGE 2

**Note:** This product is for research use only.

## Validation Data



Copyright ©2024 Genuin Biotechnologies LLC

Flow cytometric analysis of GTF2I expression in HAP-1 cells using anti-GTF2I antibody (Cat#3939, 1:2,000). Green, isotype control; red, GTF2I.

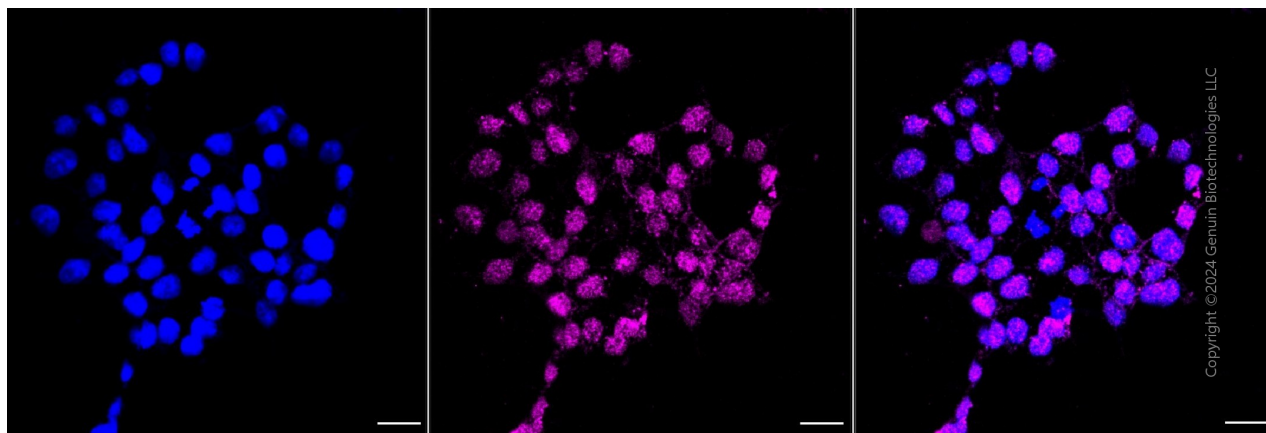
### SUPPORT

SUPPORT@GENUINBIOTECH.COM  
TEL: +1-540-855-7041

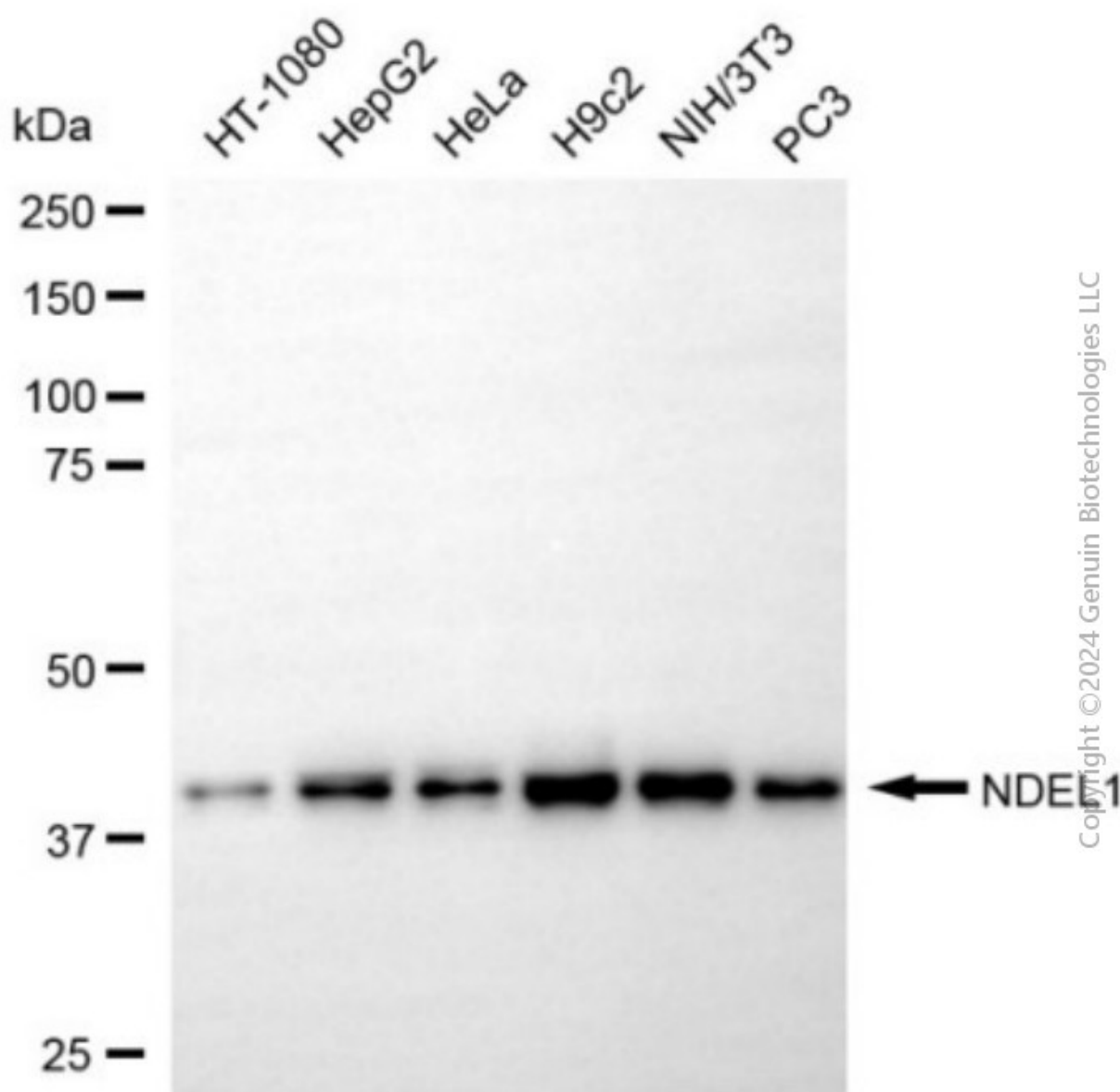
### ORDERS

SALES@GENUINBIOTECH.COM  
FAX: +1-540-855-7041

[WWW.GENUINBIOTECH.COM](http://WWW.GENUINBIOTECH.COM)



Immunocytochemical staining of HAP1 cells with anti-GTF2I antibody (Cat#3939, 1:1,000). Nuclei were stained blue with DAPI;GTF2I was stained magenta with Alexa Fluor® 647. Images were taken using Leica stellaris 5. Protein abundance based on laser Intensity and smart gain: Medium. Scale bar, 20  $\mu$ m.



Western blotting analysis using anti-GTF2I antibody (Cat#3939). Total cell lysates (30  $\mu$ g) from various cell lines were loaded and separated by SDS-PAGE. The blot was incubated with anti-GTF2I antibody (Cat#3939, 1:5,000) and HRP-conjugated goat anti-rabbit secondary antibody (Cat#201, 1:20,000) respectively. Image was developed using NaQ™ ECL Substrate Kit (Cat#716).