

Anti-Neuronal Calcium Sensor 1 Recombinant Rabbit Monoclonal Antibody



Catalog #: 3942

Aliases

NCS1; Neuronal Calcium Sensor 1; NCS-1; FREQ; Frequenin-Like Ubiquitous Protein; Frequenin-Like Protein; Frequenin Homolog; FLUP; Frequenin (Drosophila) Homolog; Frequenin Homolog (Drosophila)

Background

Gene Name: NCS1

NCBI Gene Entry: [23413](#)

UniProt Entry: [P62166](#)

Application Information

Molecular Weight: Predicted, 22 kDa; observed, 21 kDa

Clonality: Rabbit monoclonal antibody

Clone ID: 24GB8800

Species Reactivity: Human, mouse, rat

Applications Tested: Western blotting (WB), immunocytochemistry (IC), flow cytometry (FCM)

Immunogen

A synthesized peptide derived from human NCS 1

Isotype

Rabbit IgG

Storage Buffer

Supplied in PBS (pH 7.4) containing 50% glycerol, and 0.02% sodium azide.

Storage

Store at -20 °C for one year.

Recommended Dilutions

Western Blotting (WB): 1:1,000-1:5,000

Immunocytochemistry (IC): 1:100-1:1,000

Flow Cytometry (FCM): 1:2,000

Note: This product is for research use only.

SUPPORT

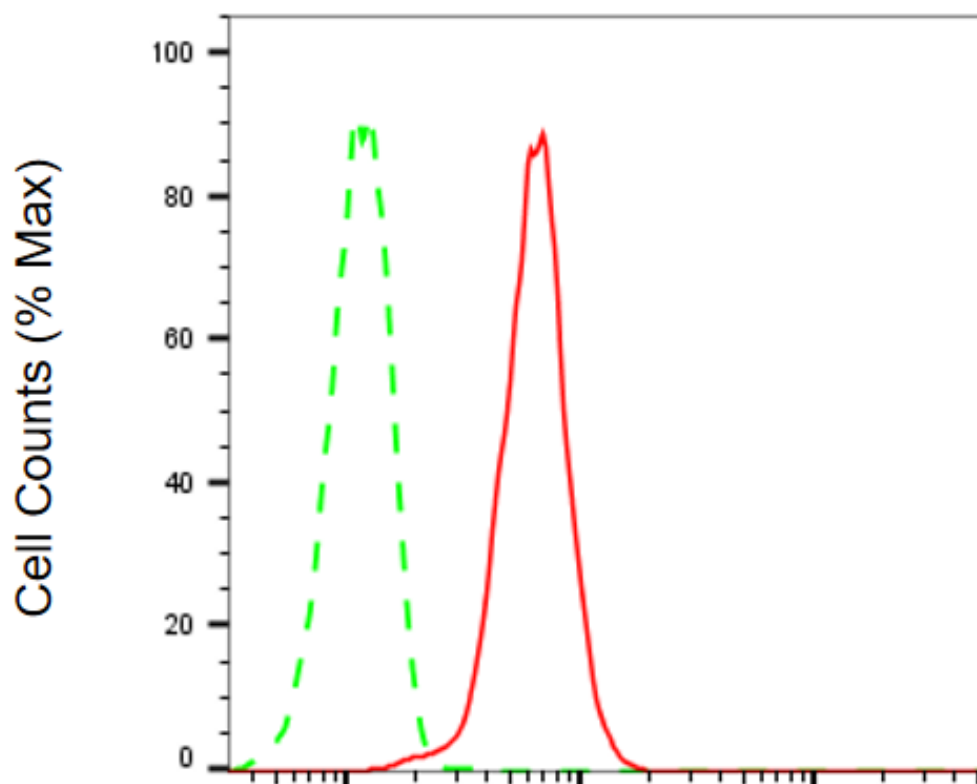
SUPPORT@GENUINBIOTECH.COM
TEL: +1-540-855-7041

ORDERS

SALES@GENUINBIOTECH.COM
FAX: +1-540-855-7041

WWW.GENUINBIOTECH.COM

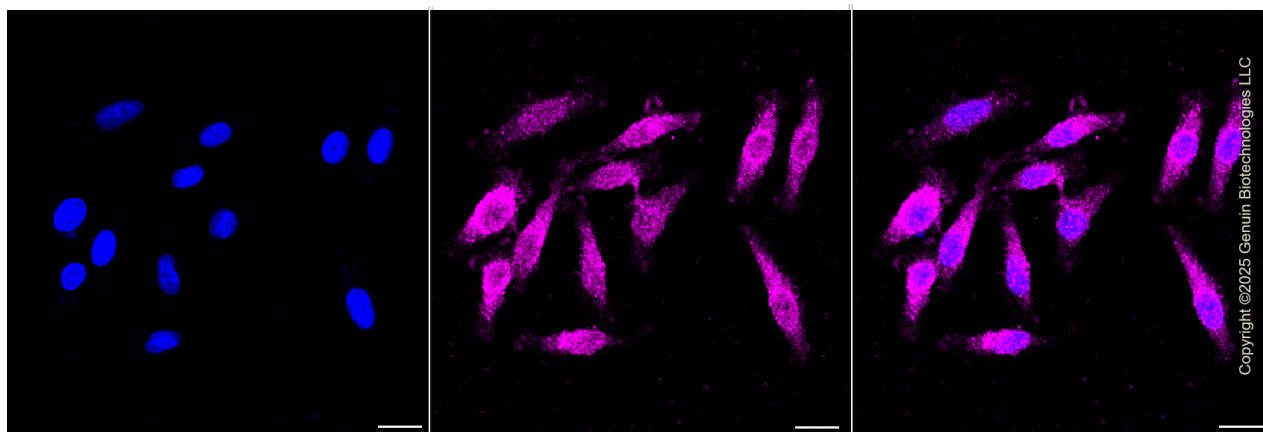
Validation Data



Copyright ©2025 Genuin Biotechnologies LLC

Neuronal calcium sensor 1-Alexa Fluor® 647

Flow cytometric analysis of Neuronal calcium sensor 1 expression in HepG2 cells using anti-Neuronal calcium sensor 1 antibody (Cat#3942, 1:2,000). Green, isotype control; red, Neuronal calcium sensor 1.



Copyright ©2025 Genuin Biotechnologies LLC

SUPPORT

SUPPORT@GENUINBIOTECH.COM
TEL: +1-540-855-7041

ORDERS

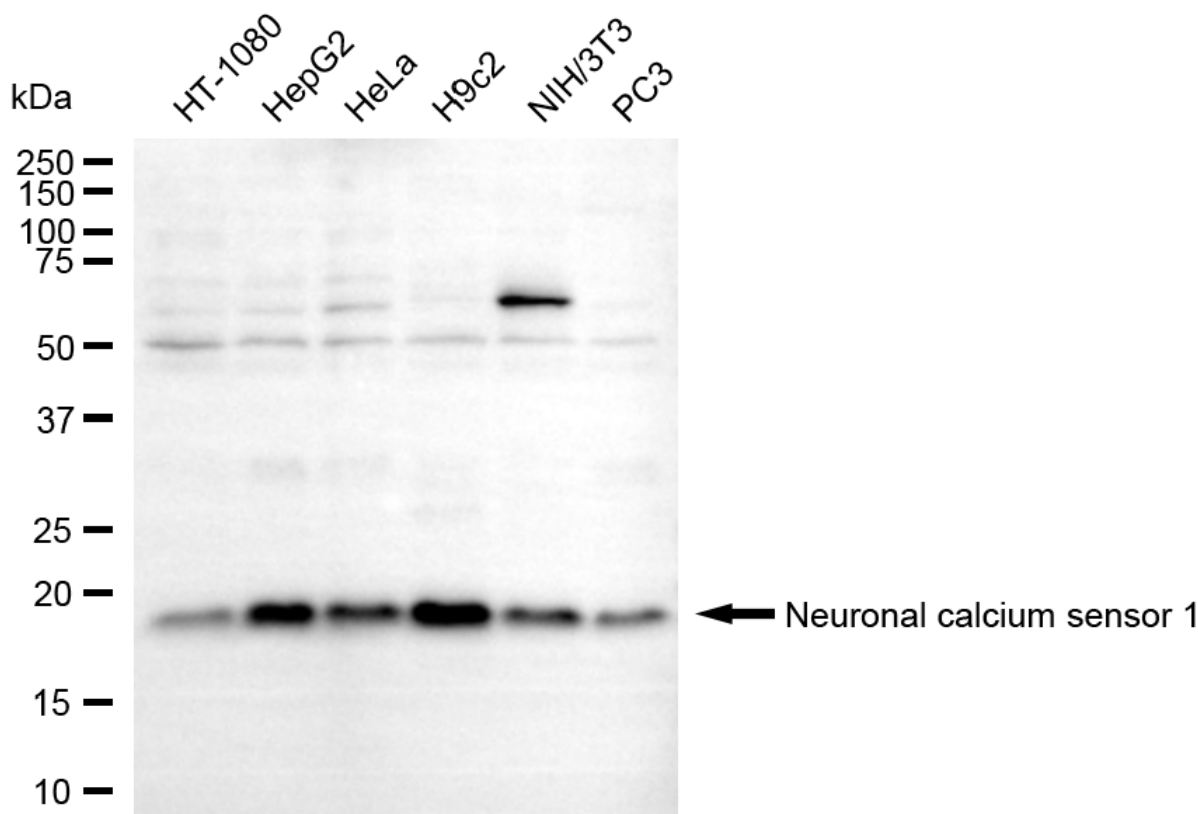
SALES@GENUINBIOTECH.COM
FAX: +1-540-855-7041

WWW.GENUINBIOTECH.COM

Anti-Neuronal Calcium Sensor 1 Recombinant Rabbit Monoclonal Antibody

PAGE 3

Immunocytochemical staining of HepG2 cells with anti-Neuronal calcium sensor 1 antibody (Cat#3942, 1:1,000). Nuclei were stained blue with DAPI; Neuronal calcium sensor 1 was stained magenta with Alexa Fluor® 647. Images were taken using Leica stellaris 5. Protein abundance based on laser Intensity and smart gain: Low. Scale bar, 20 μ m.



Western blotting analysis using anti-neuronal calcium sensor 1 antibody (Cat#3942). Total cell lysates (30 μ g) from various cell lines were loaded and separated by SDS-PAGE. The blot was incubated with anti-neuronal calcium sensor 1 antibody (Cat#3942, 1:5,000) and HRP-conjugated goat anti-rabbit secondary antibody (Cat#201, 1:20,000) respectively. Image was developed using FeQ™ ECL Substrate Kit (Cat#226).

SUPPORT

SUPPORT@GENUINBIOTECH.COM
TEL: +1-540-855-7041

ORDERS

SALES@GENUINBIOTECH.COM
FAX: +1-540-855-7041

WWW.GENUINBIOTECH.COM