

# Anti-Acetyl-CoA acyltransferase 2 Recombinant Rabbit Monoclonal Antibody



**Catalog #: 3943**

## Aliases

ACAA2; Acetyl-CoA Acyltransferase 2; DSAEC 2; Mitochondrial 3-Oxoacyl-Coenzyme A Thiolase 2; 3-Ketoacyl-CoA Thiolase, Mitochondrial; Mitochondrial 3-Oxoacyl-CoA Thiolase; Acetyl-Coenzyme A Acyltransferase 2; Acyl-CoA Hydrolase, Mitochondrial; Acetyl-CoA Acetyltransferase; EC 2.3.1.16; T1; Acetyl-CoA Acyltransferase; Beta Ketothiolase; Beta-Ketothiolase; EC 2.3.1.9; EC 3.1.2.-; EC 3.1.2.1; EC 3.1.2.2; EC 2.3.1

## Background

Gene Name: ACAA2

NCBI Gene Entry: [10449](#)

UniProt Entry: [P42765](#)

## Application Information

Molecular Weight: Predicted, 42 kDa; observed, 45 kDa

Clonality: Rabbit monoclonal antibody

Clone ID: 24GB8805

Species Reactivity: Human, mouse, rat

Applications Tested: Western blotting (WB), flow cytometry (FCM), immunocytochemistry (IC)

## Immunogen

A synthesized peptide derived from human ACAA2

## Isotype

Rabbit IgG

## Storage Buffer

Supplied in PBS (pH 7.4) containing 50% glycerol, and 0.02% sodium azide.

## Storage

Store at -20 °C for one year.

## Recommended Dilutions

Western Blotting (WB): 1:1,000-1:5,000

Flow Cytometry (FCM): 1:2,000

Immunocytochemistry (IC): 1:100-1:1,000

---

### SUPPORT

SUPPORT@GENUINBIOTECH.COM  
TEL: +1-540-855-7041

### ORDERS

SALES@GENUINBIOTECH.COM  
FAX: +1-540-855-7041

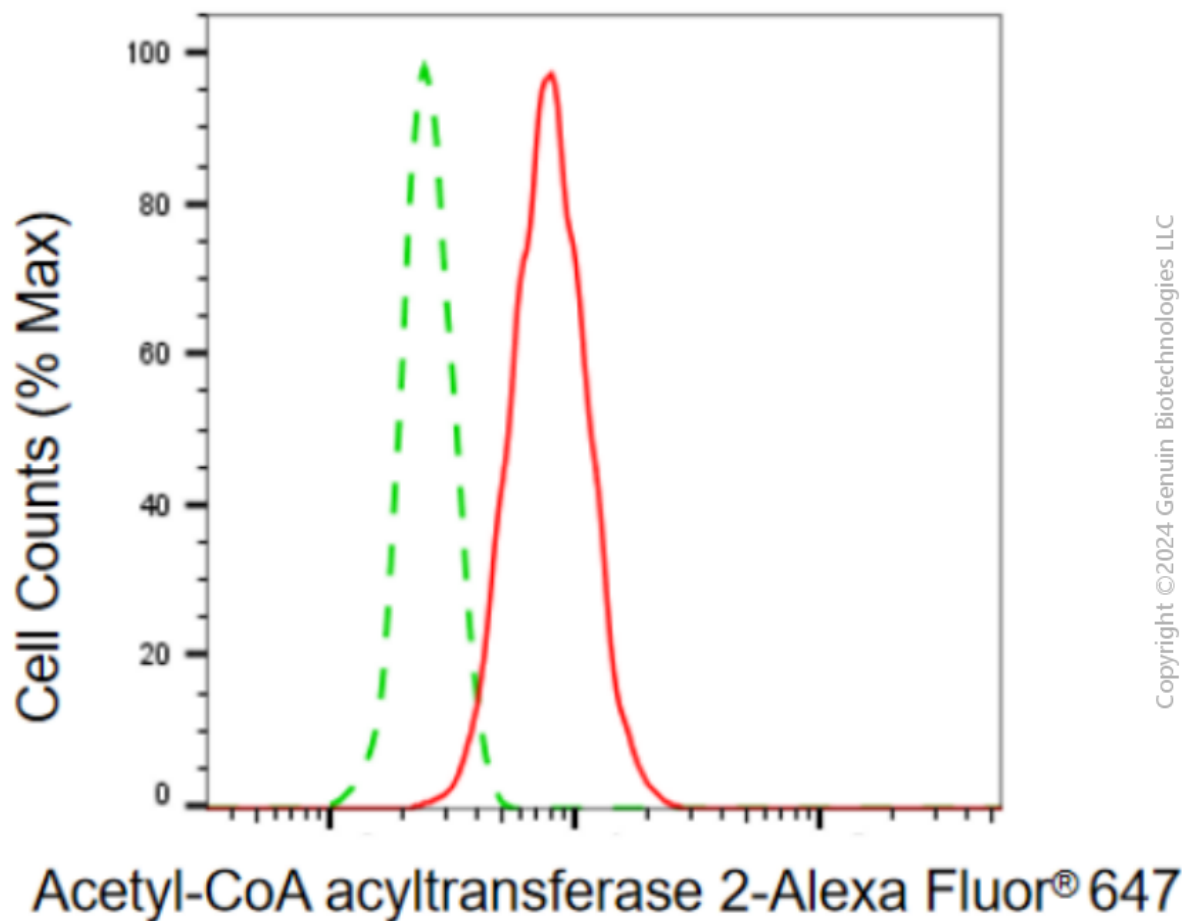
[WWW.GENUINBIOTECH.COM](http://WWW.GENUINBIOTECH.COM)

# Anti-Acetyl-CoA acyltransferase 2 Recombinant Rabbit Monoclonal Antibody

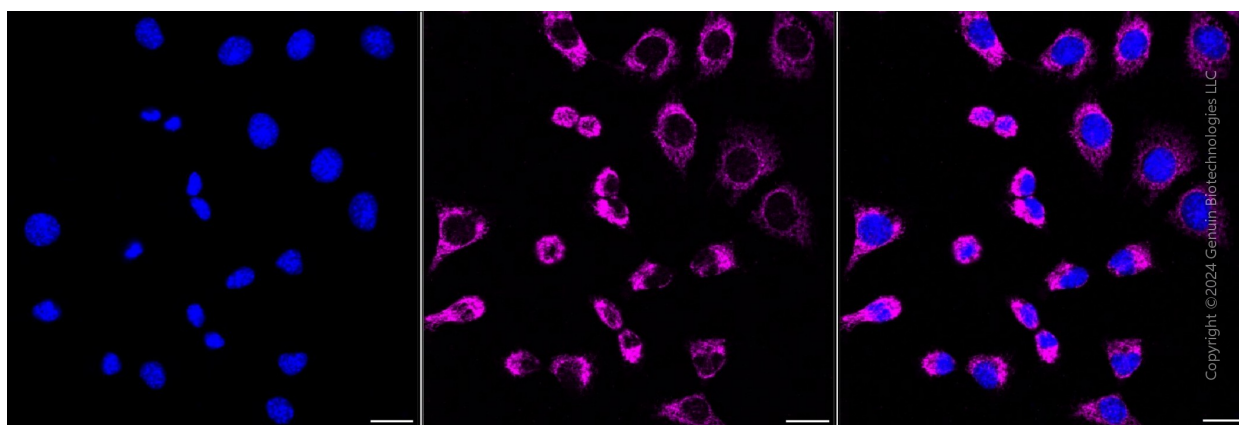
PAGE 2

**Note:** This product is for research use only.

## Validation Data



Flow cytometric analysis of acetyl-CoA acyltransferase 2 expression in C2C12 cells using anti-acetyl-CoA acyltransferase 2 antibody (Cat#3943, 1:2,000). Green, isotype control; red, acetyl-CoA acyltransferase 2.



### SUPPORT

SUPPORT@GENUINBIOTECH.COM  
TEL: +1-540-855-7041

### ORDERS

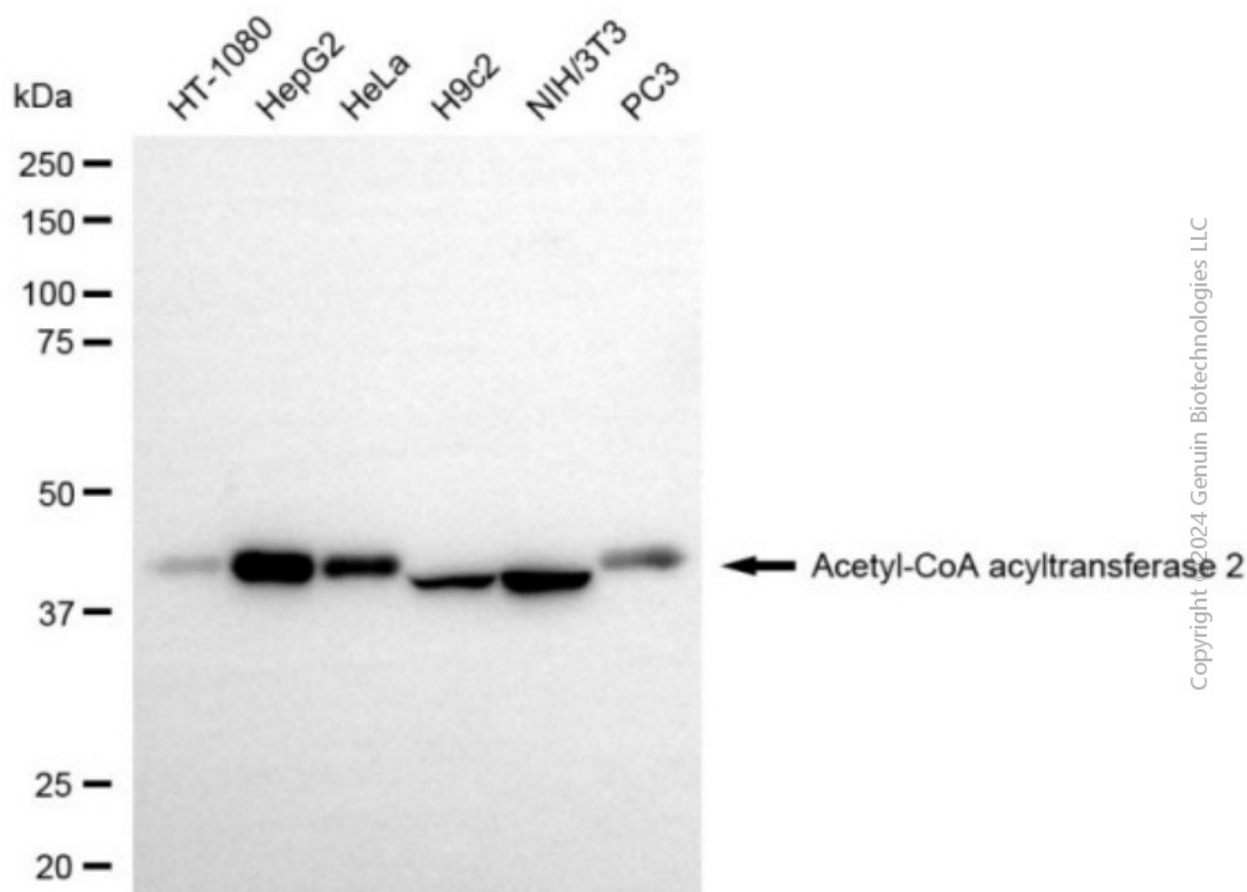
SALES@GENUINBIOTECH.COM  
FAX: +1-540-855-7041

WWW.GENUINBIOTECH.COM

## Anti-Acetyl-CoA acyltransferase 2 Recombinant Rabbit Monoclonal Antibody

PAGE 3

Immunocytochemical staining of C2C12 cells with anti-Acetyl-CoA acyltransferase 2 antibody (Cat#3943, 1:1,000). Nuclei were stained blue with DAPI; Acetyl-CoA acyltransferase 2 was stained magenta with Alexa Fluor® 647. Images were taken using Leica stellaris 5. Protein abundance based on laser Intensity and smart gain: High. Scale bar, 20  $\mu$ m.



Western blotting analysis using anti-acetyl-CoA acyltransferase 2 antibody (Cat#3943). Total cell lysates (30  $\mu$ g) from various cell lines were loaded and separated by SDS-PAGE. The blot was incubated with anti-acetyl-CoA acyltransferase 2 antibody (Cat#3943, 1:5,000) and HRP-conjugated goat anti-rabbit secondary antibody (Cat#201, 1:20,000) respectively. Image was developed using NaQ™ ECL Substrate Kit (Cat#716).

### SUPPORT

SUPPORT@GENUINBIOTECH.COM  
TEL: +1-540-855-7041

### ORDERS

SALES@GENUINBIOTECH.COM  
FAX: +1-540-855-7041

WWW.GENUINBIOTECH.COM