

Anti-CD58 Recombinant Rabbit Monoclonal Antibody



Catalog #: 3948

Aliases

CD58; CD58 Molecule; LFA3; CD58 Antigen, (Lymphocyte Function-Associated Antigen 3); Lymphocyte Function-Associated Antigen 3; Surface Glycoprotein LFA-3; Ag3; CD58 Antigen; LFA-3

Background

Gene Name: CD58

NCBI Gene Entry: [965](#)

UniProt Entry: [P19256](#)

Application Information

Molecular Weight: Predicted, 28 kDa; observed, 37-75 kDa

Clonality: Rabbit monoclonal antibody

Clone ID: 24GB8830

Species Reactivity: Human

Applications Tested: Western blotting (WB), flow cytometry (FCM), immunocytochemistry (IC)

Immunogen

A synthesized peptide derived from CD58

Isotype

Rabbit IgG

Storage Buffer

Supplied in PBS (pH 7.4) containing 50% glycerol, and 0.02% sodium azide.

Storage

Store at -20 °C for one year.

Recommended Dilutions

Western Blotting (WB): 1:1,000-1:5,000

Flow Cytometry (FCM): 1:2,000

Immunocytochemistry (IC): 1:100-1:1,000

Note: This product is for research use only.

SUPPORT

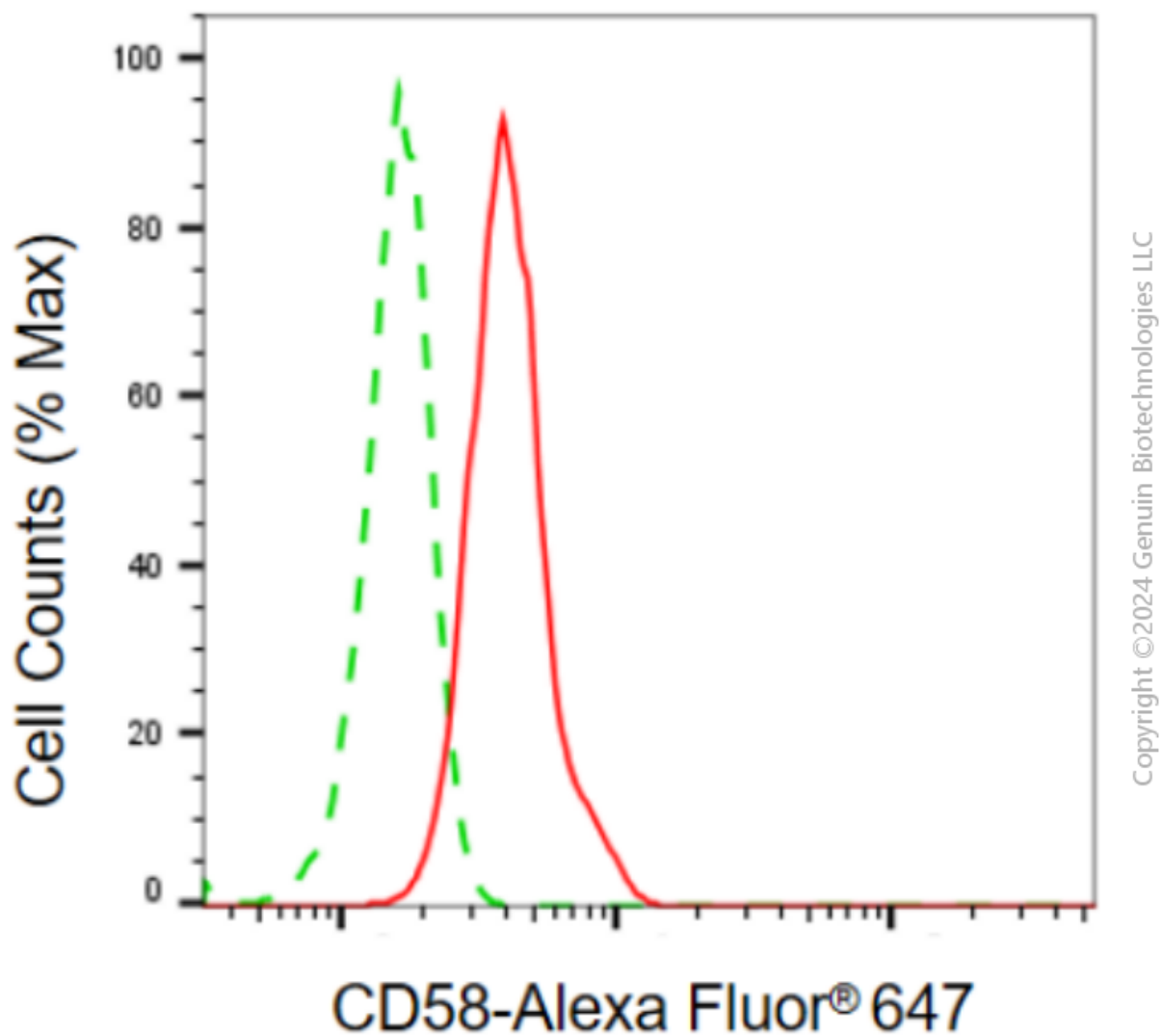
SUPPORT@GENUINBIOTECH.COM
TEL: +1-540-855-7041

ORDERS

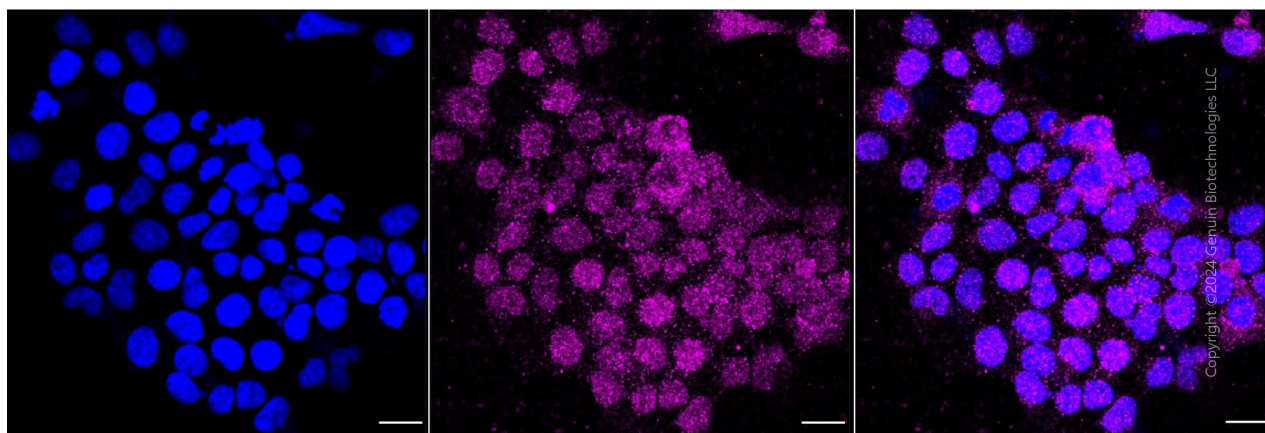
SALES@GENUINBIOTECH.COM
FAX: +1-540-855-7041

WWW.GENUINBIOTECH.COM

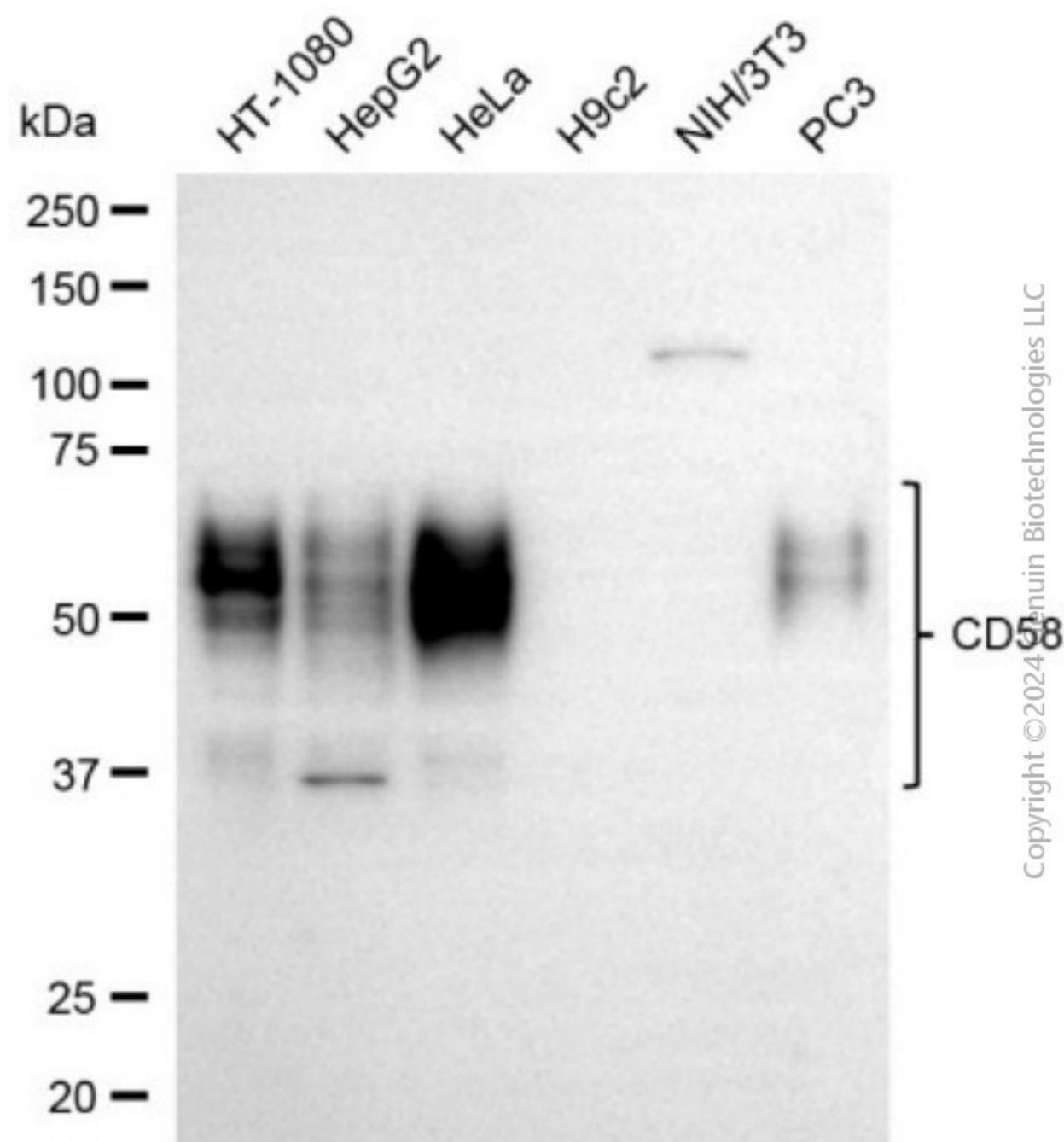
Validation Data



Flow cytometric analysis of CD58 expression in HeLa cells using anti-CD58 antibody (Cat#3948, 1:2,000). Green, isotype control; red, CD58.



Immunocytochemical staining of HeLa cells with anti-CD58 antibody (Cat#3948, 1:1,000) . Nuclei were stained blue with DAPI; CD58 was stained magenta with Alexa Fluor® 647. Images were taken using Leica stellaris 5. Protein abundance based on laser Intensity and smart gain: Low. Scale bar, 20 µm.



Western blotting analysis using anti-CD58 antibody (Cat#3948). Total cell lysates (30 µg) from various cell lines were loaded and separated by SDS-PAGE. The blot was incubated with anti-CD58 antibody (Cat#3948, 1:5,000) and HRP-conjugated goat anti-rabbit secondary antibody (Cat#201, 1:20,000) respectively. Image was developed using FeQ™ ECL Substrate Kit (Cat#226).