

# Anti-PRKCSH Recombinant Rabbit Monoclonal Antibody



**Catalog #: 3950**

## Aliases

PRKCSH; Protein Kinase C Substrate 80K-H; Glucosidase 2 Subunit Beta; VASAP-60; PKCSH; G19P1; GIIIB; Protein Kinase C Substrate 60.1 KDa Protein Heavy Chain; Advanced Glycation End-Product Receptor 2; Glucosidase II Subunit Beta; Hepatocystin; GluIIbeta; GIIbeta; AGE-R2; 80K-H; PCLD; PLD1; Protein Kinase C Substrate, 80 Kda Protein; Glucosidase II Beta Subunit; Polycystic Liver Disease; AGE-Binding Receptor 2; 80K-H Protein; PCLD1

## Background

Gene Name: PRKCSH

NCBI Gene Entry: [5589](#)

UniProt Entry: [P14314](#)

## Application Information

Molecular Weight: Predicted, 59 kDa; observed, 80 kDa

Clonality: Rabbit monoclonal antibody

Clone ID: 24GB8840

Species Reactivity: Human, rat

Applications Tested: Western blotting (WB), flow cytometry (FCM), immunocytochemistry (IC)

## Immunogen

A synthesized peptide derived from human GLU2B

## Isotype

Rabbit IgG

## Storage Buffer

Supplied in PBS (pH 7.4) containing 50% glycerol, and 0.02% sodium azide.

## Storage

Store at -20 °C for one year.

## Recommended Dilutions

Western Blotting (WB): 1:1,000-1:5,000

Flow Cytometry (FCM): 1:2,000

Immunocytochemistry (IC): 1:100-1:1,000

---

### SUPPORT

SUPPORT@GENUINBIOTECH.COM  
TEL: +1-540-855-7041

### ORDERS

SALES@GENUINBIOTECH.COM  
FAX: +1-540-855-7041

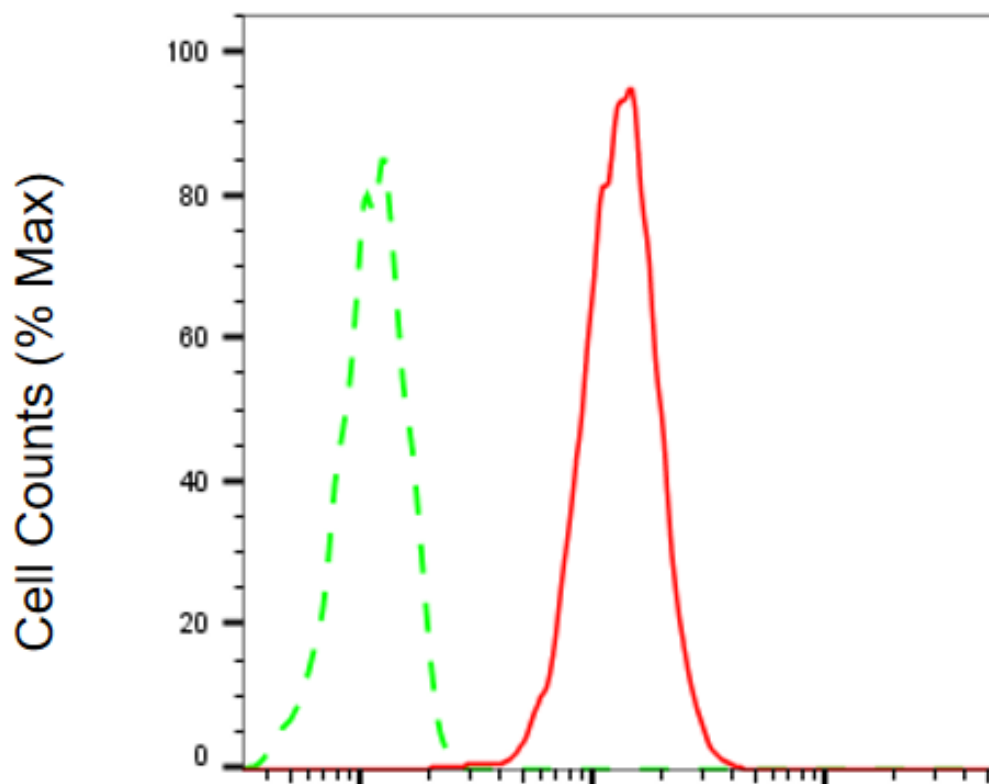
[WWW.GENUINBIOTECH.COM](http://WWW.GENUINBIOTECH.COM)

# Anti-PRKCSH Recombinant Rabbit Monoclonal Antibody

PAGE 2

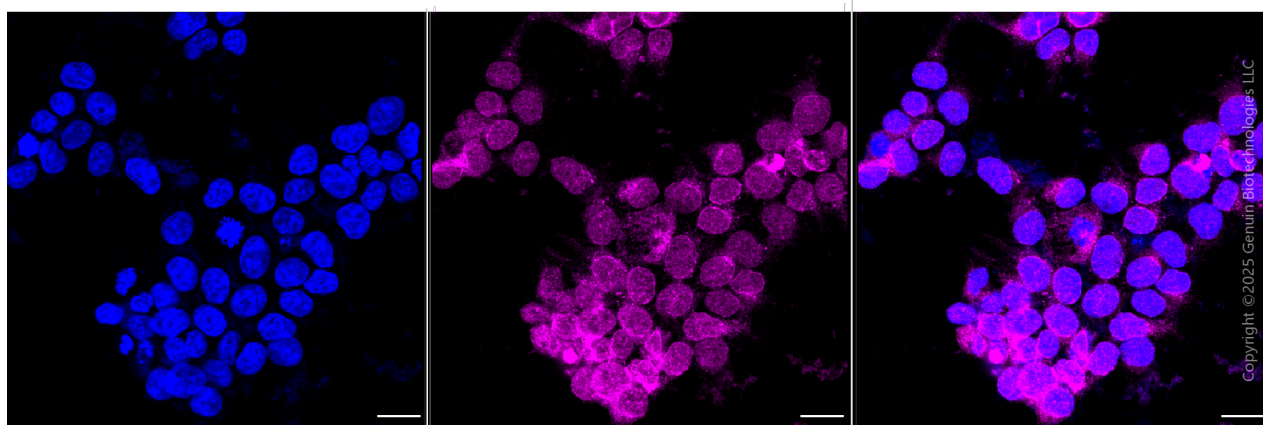
**Note:** This product is for research use only.

## Validation Data



Copyright ©2025 Genuin Biotechnologies LLC

Flow cytometric analysis of PRKCSH expression in HeLa cells using anti-PRKCSH antibody (Cat#3950, 1:2,000). Green, isotype control; red, PRKCSH.



### SUPPORT

SUPPORT@GENUINBIOTECH.COM  
TEL: +1-540-855-7041

### ORDERS

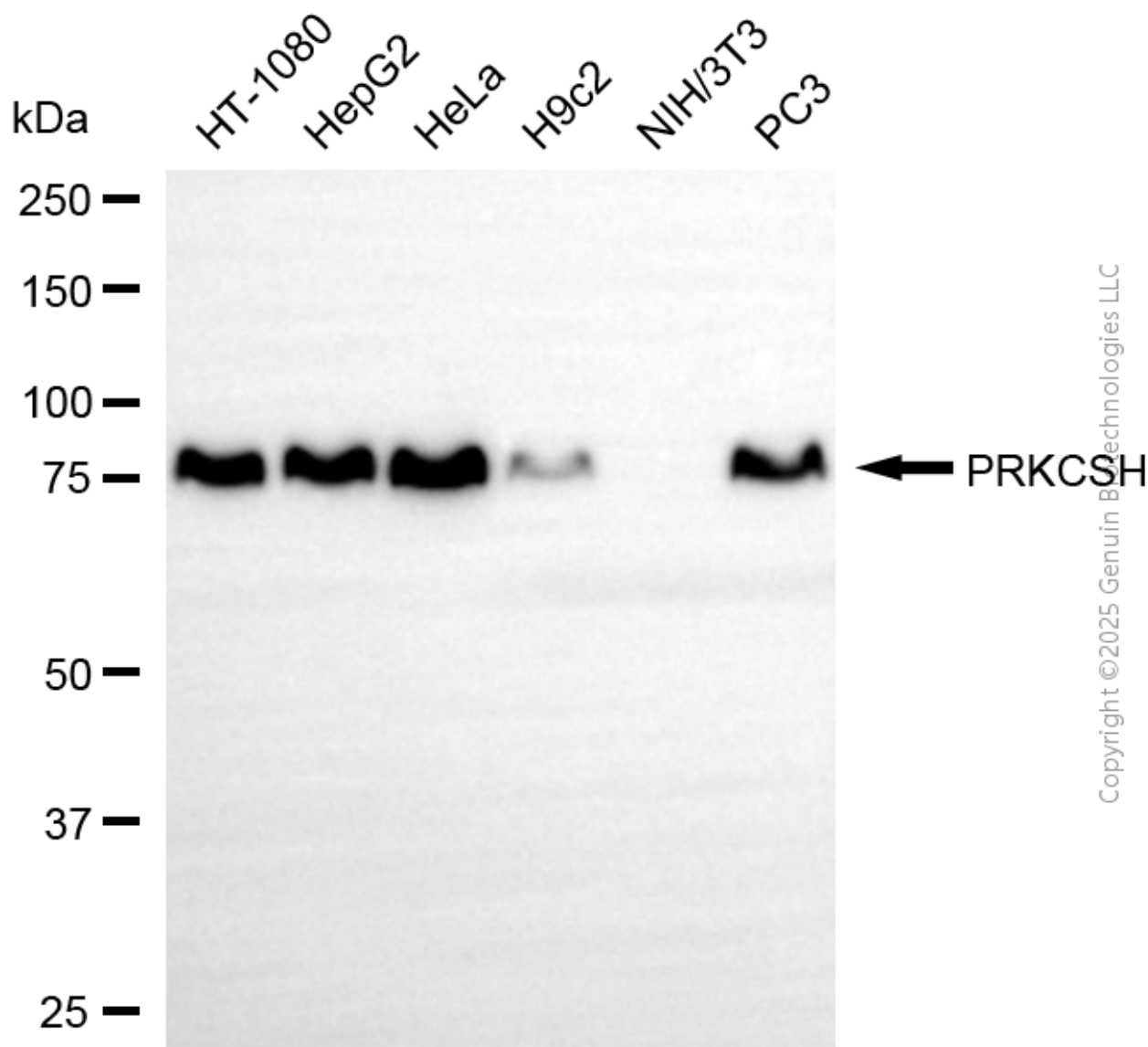
SALES@GENUINBIOTECH.COM  
FAX: +1-540-855-7041

WWW.GENUINBIOTECH.COM

## Anti-PRKCSH Recombinant Rabbit Monoclonal Antibody

PAGE 3

Immunocytochemical staining of Hela cells with anti-PRKCSH antibody (Cat#3950, 1:1,000). Nuclei were stained blue with DAPI; PRKCSH was stained magenta with Alexa Fluor® 647. Images were taken using Leica stellaris 5. Protein abundance based on laser Intensity and smart gain: Medium. Scale bar, 20  $\mu$ m.



Western blotting analysis using anti-PRKCSH antibody (Cat#3950). Total cell lysates (30  $\mu$ g) from various cell lines were loaded and separated by SDS-PAGE. The blot was incubated with anti-PRKCSH antibody (Cat#3950, 1:5,000) and HRP-conjugated goat anti-rabbit secondary antibody (Cat#201, 1:20,000) respectively. Image was developed using NaQ™ ECL Substrate Kit (Cat#716).

### SUPPORT

SUPPORT@GENUINBIOTECH.COM  
TEL: +1-540-855-7041

### ORDERS

SALES@GENUINBIOTECH.COM  
FAX: +1-540-855-7041

[WWW.GENUINBIOTECH.COM](http://WWW.GENUINBIOTECH.COM)