

# Anti-Coenzyme A synthase Recombinant Rabbit Monoclonal Antibody



**Catalog #: 3951**

## Aliases

COASY; Coenzyme A Synthase; NBP; Bifunctional Coenzyme A Synthase; CoA Synthase; DPCCK; PPAT; POV-2; Bifunctional Phosphopantetheine Adenylyl Transferase/Dephospho CoA Kinase; Phosphopantetheine Adenylyltransferase / Dephosphocoenzyme A Kinase; Nucleotide Binding Protein; NBIA6; PCH12; UKR1

## Background

Gene Name: COASY

NCBI Gene Entry: [80347](#)

UniProt Entry: [Q13057](#)

## Application Information

Molecular Weight: Predicted, 62 kDa; observed, 62 kDa

Clonality: Rabbit monoclonal antibody

Clone ID: 24GB8845

Species Reactivity: Human

Applications Tested: Western blotting (WB), flow cytometry (FCM), immunocytochemistry (IC)

## Immunogen

A synthesized peptide derived from COASY

## Isotype

Rabbit IgG

## Storage Buffer

Supplied in PBS (pH 7.4) containing 50% glycerol, and 0.02% sodium azide.

## Storage

Store at -20 °C for one year.

## Recommended Dilutions

Western Blotting (WB): 1:1,000-1:5,000

Flow Cytometry (FCM): 1:2,000

Immunocytochemistry (IC): 1:100-1:1,000

---

### SUPPORT

SUPPORT@GENUINBIOTECH.COM  
TEL: +1-540-855-7041

### ORDERS

SALES@GENUINBIOTECH.COM  
FAX: +1-540-855-7041

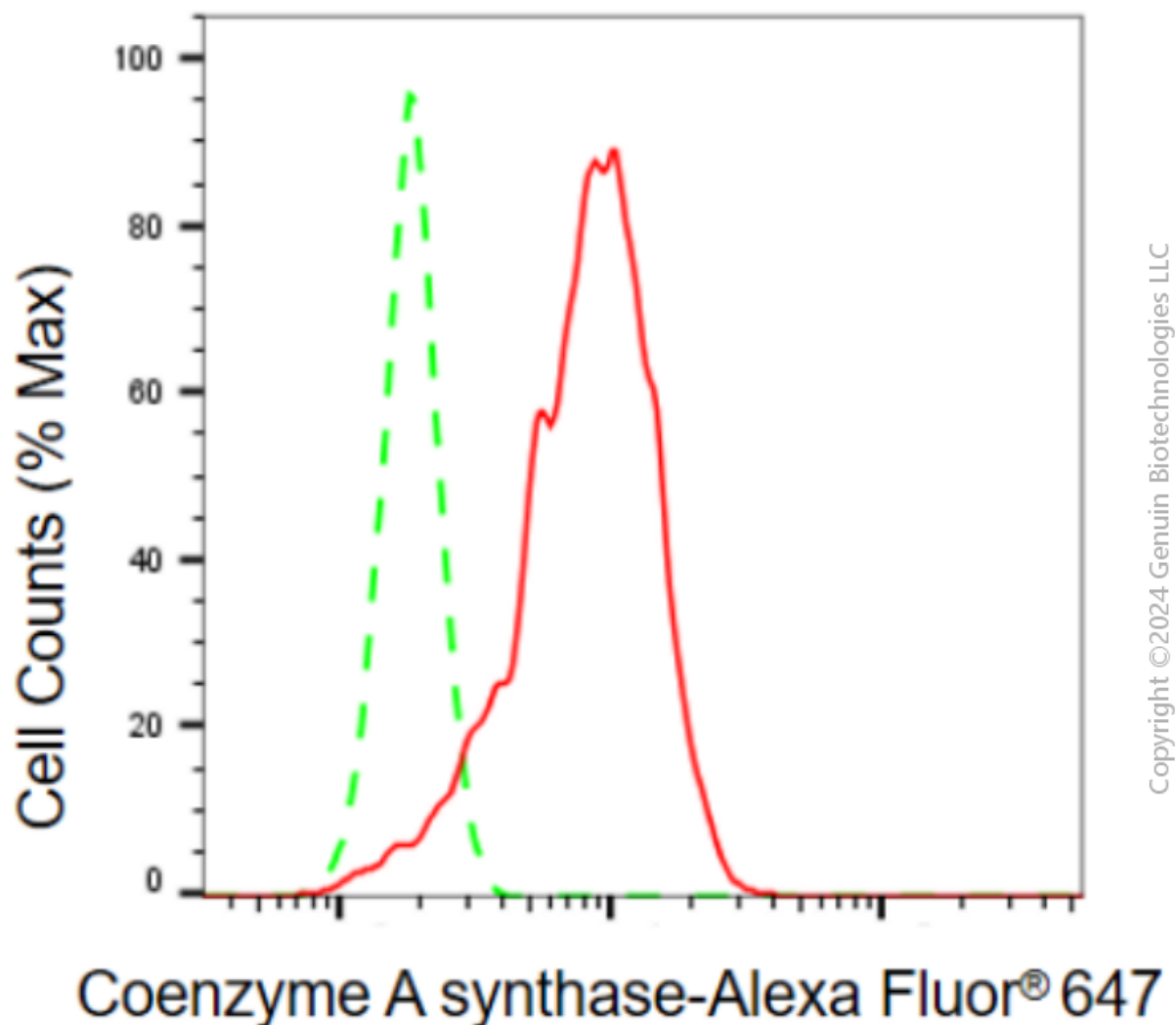
[WWW.GENUINBIOTECH.COM](http://WWW.GENUINBIOTECH.COM)

# Anti-Coenzyme A synthase Recombinant Rabbit Monoclonal Antibody

PAGE 2

**Note:** This product is for research use only.

## Validation Data



Flow cytometric analysis of coenzyme A synthase expression in HepG2 cells using anti-coenzyme A synthase antibody (Cat#3951, 1:2,000). Green, isotype control; red, coenzyme A synthase.

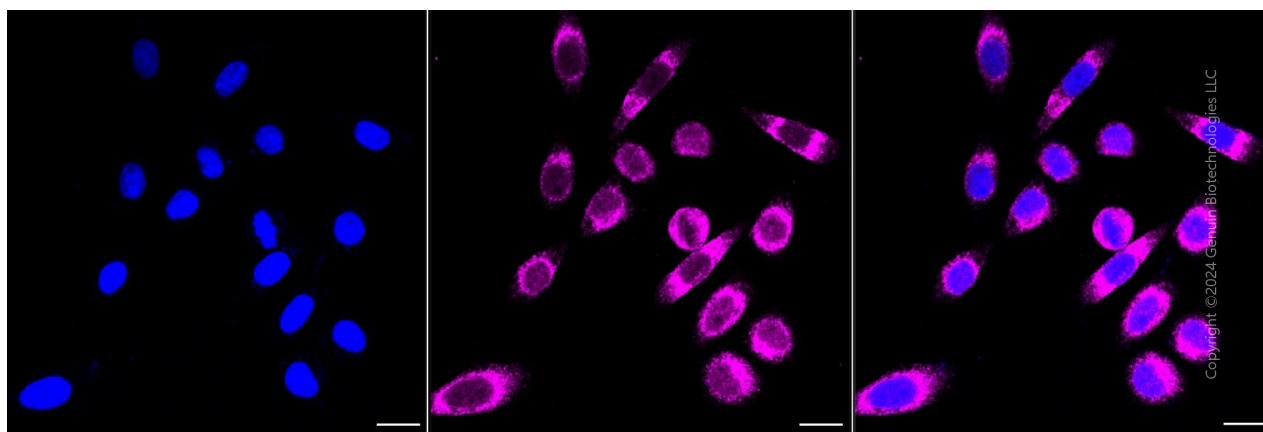
### SUPPORT

SUPPORT@GENUINBIOTECH.COM  
TEL: +1-540-855-7041

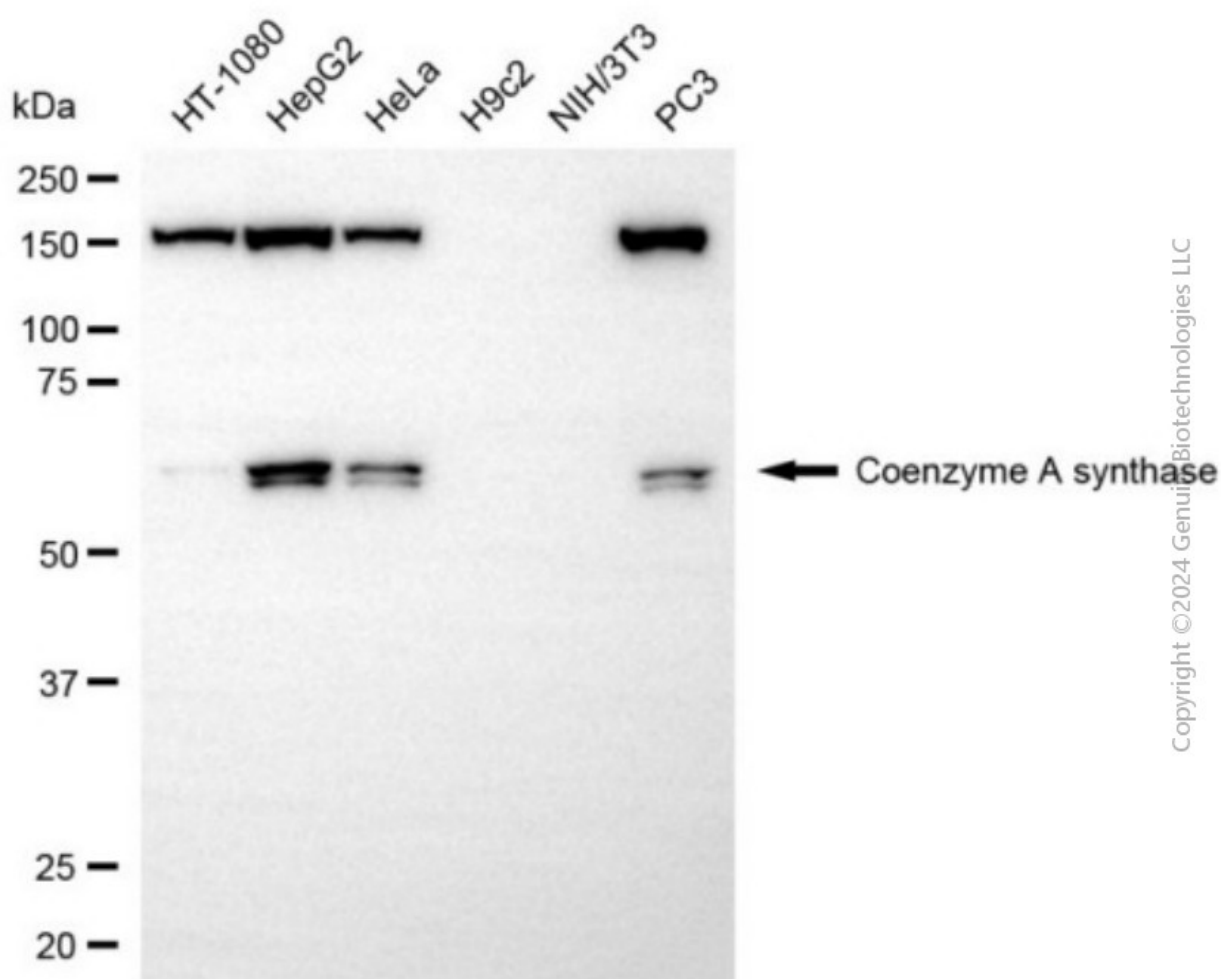
### ORDERS

SALES@GENUINBIOTECH.COM  
FAX: +1-540-855-7041

[WWW.GENUINBIOTECH.COM](http://WWW.GENUINBIOTECH.COM)



Immunocytochemical staining of HepG2 cells with anti-Coenzyme A synthase antibody (Cat#3951, 1:1,000) . Nuclei were stained blue with DAPI; Coenzyme A synthase was stained magenta with Alexa Fluor® 647. Images were taken using Leica stellaris 5. Protein abundance based on laser Intensity and smart gain: High. Scale bar, 20 µm.



Western blotting analysis using anti-coenzyme A synthase antibody (Cat#3951). Total cell lysates

## SUPPORT

SUPPORT@GENUINBIOTECH.COM  
TEL: +1-540-855-7041

## ORDERS

SALES@GENUINBIOTECH.COM  
FAX: +1-540-855-7041

WWW.GENUINBIOTECH.COM

## **Anti-Coenzyme A synthase Recombinant Rabbit Monoclonal Antibody**

PAGE 4

(30 µg) from various cell lines were loaded and separated by SDS-PAGE. The blot was incubated with anti-coenzyme A synthase antibody (Cat#3951, 1:5,000) and HRP-conjugated goat anti-rabbit secondary antibody (Cat#201, 1:20,000) respectively. Image was developed using NaQ™ ECL Substrate Kit (Cat#716).

---

### **SUPPORT**

SUPPORT@GENUINBIOTECH.COM  
TEL: +1-540-855-7041

### **ORDERS**

SALES@GENUINBIOTECH.COM  
FAX: +1-540-855-7041

**WWW.GENUINBIOTECH.COM**