

Anti-Acetyl-CoA acetyltransferase 2 Recombinant Rabbit Monoclonal Antibody



Catalog #: 3953

Aliases

ACAT2; Acetyl-CoA Acetyltransferase 2; Acetyl-CoA Acetyltransferase, Cytosolic; Acetyl-CoA Transferase-Like Protein; Cytosolic Acetoacetyl-CoA Thiolase; Acetoacetyl Coenzyme A Thiolase; EC 2.3.1.9; Acetyl-Coenzyme A Acetyltransferase 2 (Acetoacetyl Coenzyme A Thiolase); Acetyl-Coenzyme A Acetyltransferase 2; EC 2.3.1; ACTL

Background

Gene Name: ACAT2

NCBI Gene Entry: 39

UniProt Entry: [Q9BWD1](#)

Application Information

Molecular Weight: Predicted, 41 kDa; observed, 38 kDa

Clonality: Rabbit monoclonal antibody

Clone ID: 24GB8855

Species Reactivity: Human, mouse, rat

Applications Tested: Western blotting (WB), immunocytochemistry (IC)

Immunogen

A synthesized peptide derived from human ACAT2

Isotype

Rabbit IgG

Storage Buffer

Supplied in PBS (pH 7.4) containing 50% glycerol, and 0.02% sodium azide.

Storage

Store at -20 °C for one year.

Recommended Dilutions

Western Blotting (WB): 1:1,000-1:5,000

Immunocytochemistry (IC): 1:100-1:1,000

Note: This product is for research use only.

SUPPORT

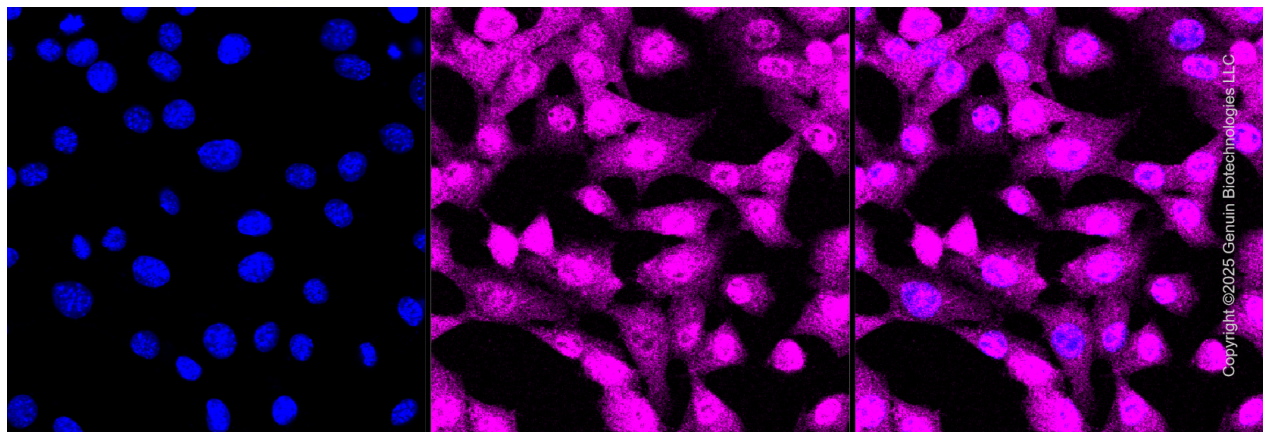
SUPPORT@GENUINBIOTECH.COM
TEL: +1-540-855-7041

ORDERS

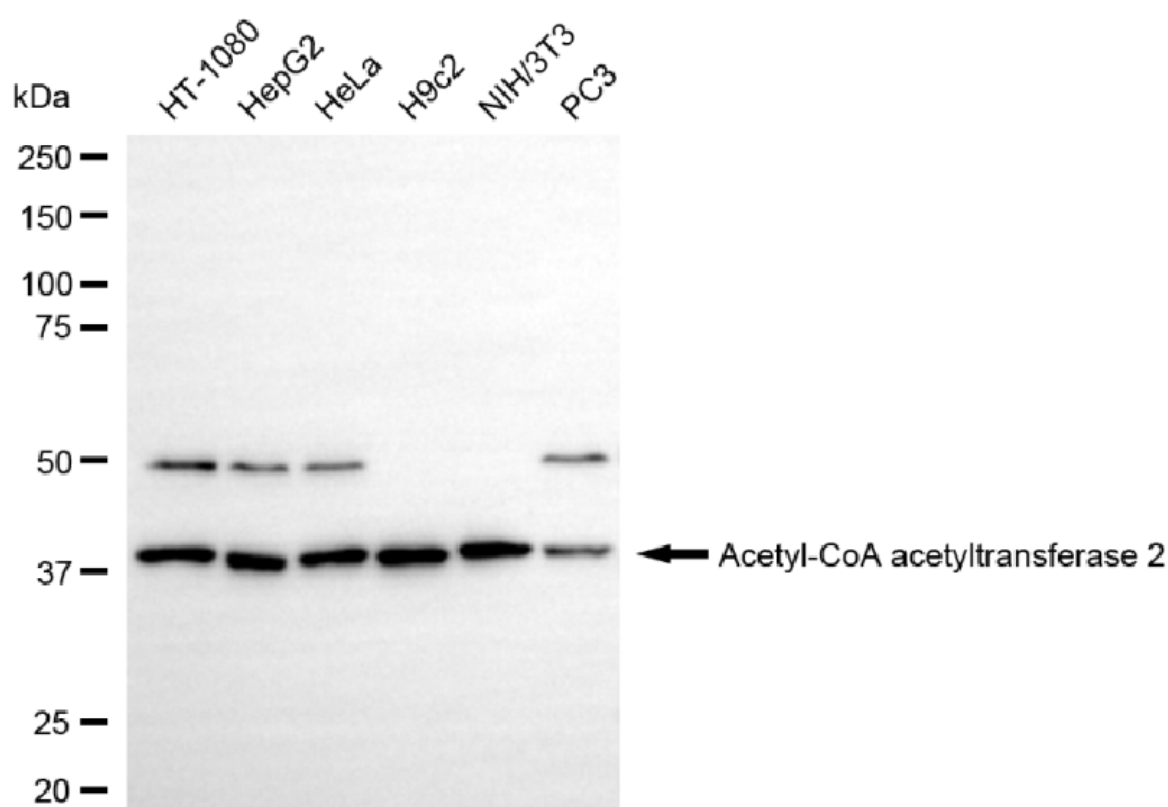
SALES@GENUINBIOTECH.COM
FAX: +1-540-855-7041

WWW.GENUINBIOTECH.COM

Validation Data



Immunocytochemical staining of C2C12 cells with anti-Acetyl-CoA acetyltransferase 2 antibody (Cat#3953, 1:1,000) . Nuclei were stained blue with anti-DAPI; Acetyl-CoA acetyltransferase 2 was stained magenta with Alexa Fluor® 647. Images were taken using Leica stellaris 5. Protein abundance based on laser Intensity and smart gain: Medium. Scale bar, 20 μ m.



Western blotting analysis using anti-acetyl-CoA acetyltransferase 2 antibody (Cat#3953). Total cell lysates (30 μ g) from various cell lines were loaded and separated by SDS-PAGE. The blot was incubated with anti-acetyl-CoA acetyltransferase 2 antibody (Cat#3953, 1:5,000) and HRP-

Anti-Acetyl-CoA acetyltransferase 2 Recombinant Rabbit Monoclonal Antibody

PAGE 3

conjugated goat anti-rabbit secondary antibody (Cat#201, 1:20,000) respectively. Image was developed using NaQ™ ECL Substrate Kit (Cat#716).

SUPPORT

SUPPORT@GENUINBIOTECH.COM
TEL: +1-540-855-7041

ORDERS

SALES@GENUINBIOTECH.COM
FAX: +1-540-855-7041

WWW.GENUINBIOTECH.COM