

# Anti-RAS p21 protein activator 1 Recombinant Rabbit Monoclonal Antibody



**Catalog #: 3957**

## Aliases

RASA1; RAS P21 Protein Activator 1; P120GAP; GAP; Ras GTPase-Activating Protein 1; P120RASGAP; CM-AVM; P120; RASA; RAS P21 Protein Activator (GTPase Activating Protein) 1; P120 RAS GTPase Activating Protein; Capillary Malformation-Arteriovenous Malformation; Triphosphatase-Activating Protein; GTPase-Activating Protein; Ras P21 Protein Activator; CMAVM1; RASGAP; RasGAP; CMAVM; PKWS

## Background

Gene Name: RASA1  
NCBI Gene Entry: [5921](#)  
UniProt Entry: [P20936](#)

## Application Information

Molecular Weight: Predicted, 116 kDa; observed, 140 kDa  
Clonality: Rabbit monoclonal antibody  
Clone ID: 24GB8875  
Species Reactivity: Human, mouse, rat  
Applications Tested: Western blotting (WB), immunocytochemistry (IC)

## Immunogen

A synthesized peptide derived from human RASA1

## Isotype

Rabbit IgG

## Storage Buffer

Supplied in PBS (pH 7.4) containing 50% glycerol, and 0.02% sodium azide.

## Storage

Store at -20 °C for one year.

## Recommended Dilutions

Western Blotting (WB): 1:1,000-1:5,000  
Immunocytochemistry (IC): 1:100-1:1,000

---

### SUPPORT

SUPPORT@GENUINBIOTECH.COM  
TEL: +1-540-855-7041

### ORDERS

SALES@GENUINBIOTECH.COM  
FAX: +1-540-855-7041

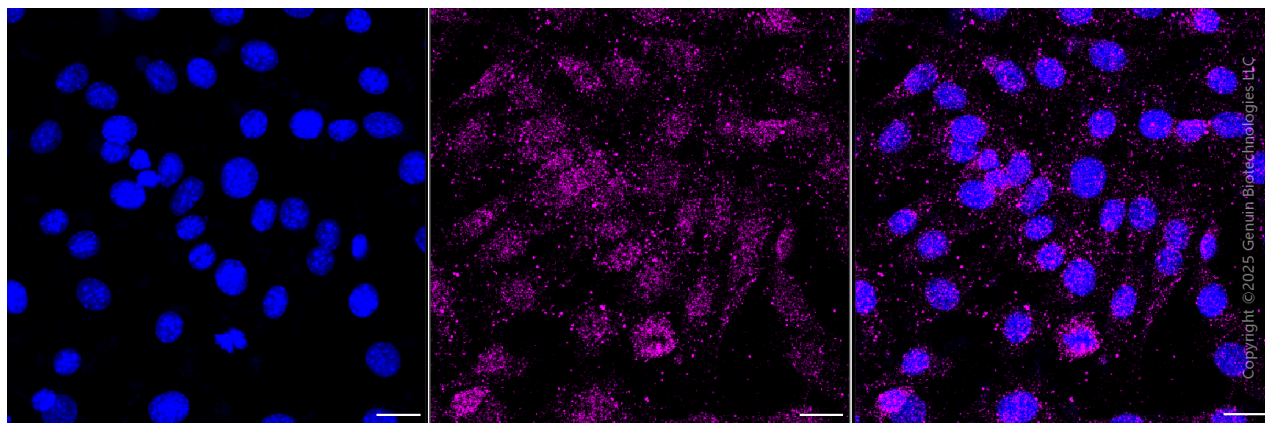
[WWW.GENUINBIOTECH.COM](http://WWW.GENUINBIOTECH.COM)

# Anti-RAS p21 protein activator 1 Recombinant Rabbit Monoclonal Antibody

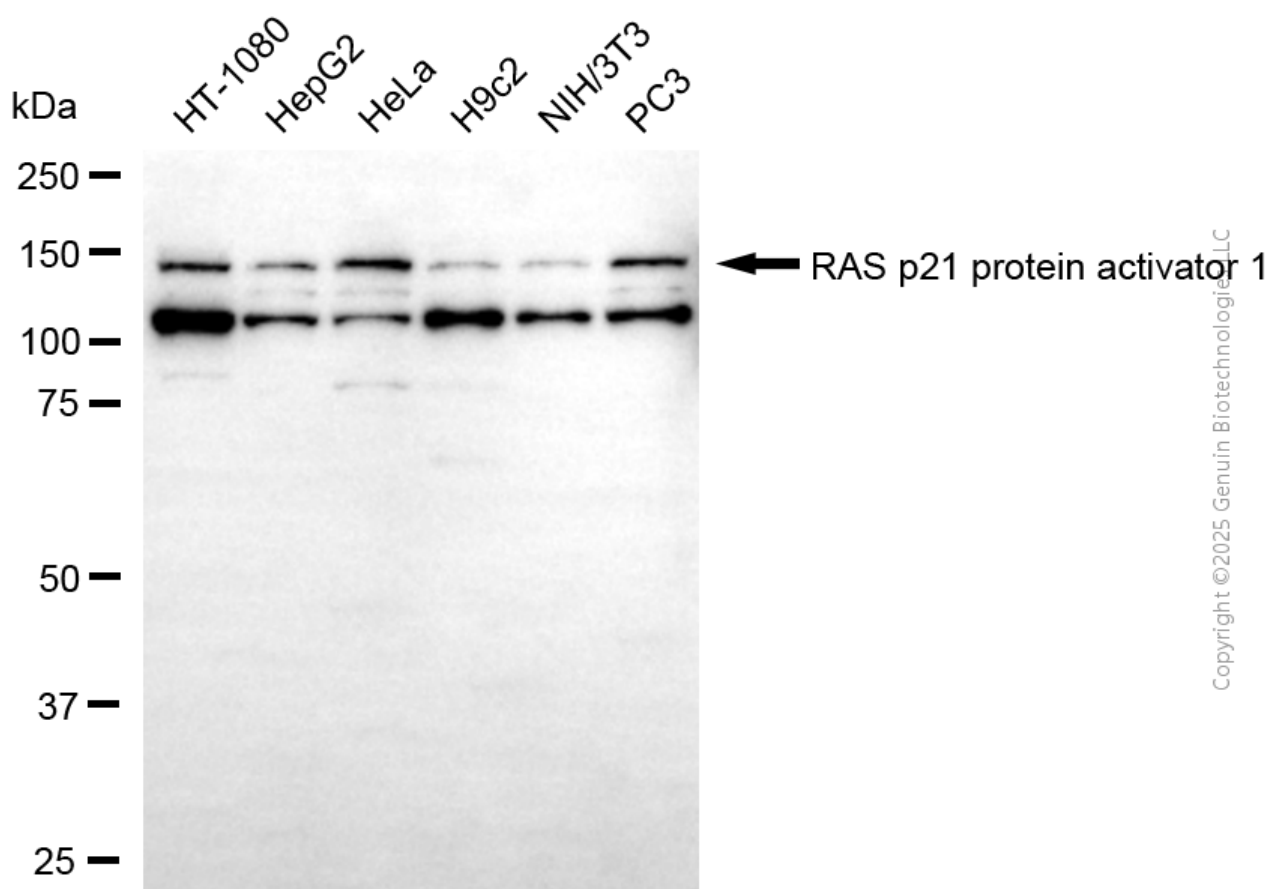
PAGE 2

**Note:** This product is for research use only.

## Validation Data



Immunocytochemical staining of C2C12 cells with anti-RAS p21 protein activator 1 antibody (Cat#3957, 1:1,000). Nuclei were stained blue with DAPI; RAS p21 protein activator 1 was stained magenta with Alexa Fluor® 647. Images were taken using Leica stellaris 5. Protein abundance based on laser Intensity and smart gain: Low. Scale bar, 20  $\mu$ m.



Western blotting analysis using anti-RAS p21 protein activator 1 antibody (Cat#3957). Total cell

### SUPPORT

SUPPORT@GENUINBIOTECH.COM  
TEL: +1-540-855-7041

### ORDERS

SALES@GENUINBIOTECH.COM  
FAX: +1-540-855-7041

WWW.GENUINBIOTECH.COM

## **Anti-RAS p21 protein activator 1 Recombinant Rabbit Monoclonal Antibody**

PAGE 3

lysates (30 µg) from various cell lines were loaded and separated by SDS-PAGE. The blot was incubated with anti-RAS p21 protein activator 1 antibody (Cat#3957, 1:5,000) and HRP-conjugated goat anti-rabbit secondary antibody (Cat#201, 1:20,000) respectively. Image was developed using FeQ™ ECL Substrate Kit (Cat#226).

---

### **SUPPORT**

SUPPORT@GENUINBIOTECH.COM  
TEL: +1-540-855-7041

### **ORDERS**

SALES@GENUINBIOTECH.COM  
FAX: +1-540-855-7041

**WWW.GENUINBIOTECH.COM**