

Anti-C1QBP Recombinant Rabbit Monoclonal Antibody



Catalog #: 3958

Aliases

C1QBP; Complement C1q Binding Protein; Hyaluronan-Binding Protein 1; GC1Q-R; SF2p32; GC1qR; HABP1; P32; Complement Component 1 Q Subcomponent-Binding Protein, Mitochondrial; Complement Component 1, Q Subcomponent Binding Protein; Splicing Factor SF2-Associated Protein; C1q Globular Domain-Binding Protein; Mitochondrial Matrix Protein P32; ASF/SF2-Associated Protein P32; Glycoprotein GC1qBP; SF2AP32; GC1QBP; P33; GC1q-R Protein; COXPD33; SF2P32; C1qBP

Background

Gene Name: C1QBP

NCBI Gene Entry: [708](#)

UniProt Entry: [Q07021](#)

Application Information

Molecular Weight: Predicted, 31 kDa; observed, 31 kDa

Clonality: Rabbit monoclonal antibody

Clone ID: 24GB8880

Species Reactivity: Human, mouse, rat

Applications Tested: Western blotting (WB), flow cytometry (FCM), immunocytochemistry (IC)

Immunogen

A synthesized peptide derived from human GC1q R

Isotype

Rabbit IgG

Storage Buffer

Supplied in PBS (pH 7.4) containing 50% glycerol, and 0.02% sodium azide.

Storage

Store at -20 °C for one year.

Recommended Dilutions

Western Blotting (WB): 1:1,000-1:5,000

Flow Cytometry (FCM): 1:2,000

Immunocytochemistry (IC): 1:100-1:1,000

SUPPORT

SUPPORT@GENUINBIOTECH.COM
TEL: +1-540-855-7041

ORDERS

SALES@GENUINBIOTECH.COM
FAX: +1-540-855-7041

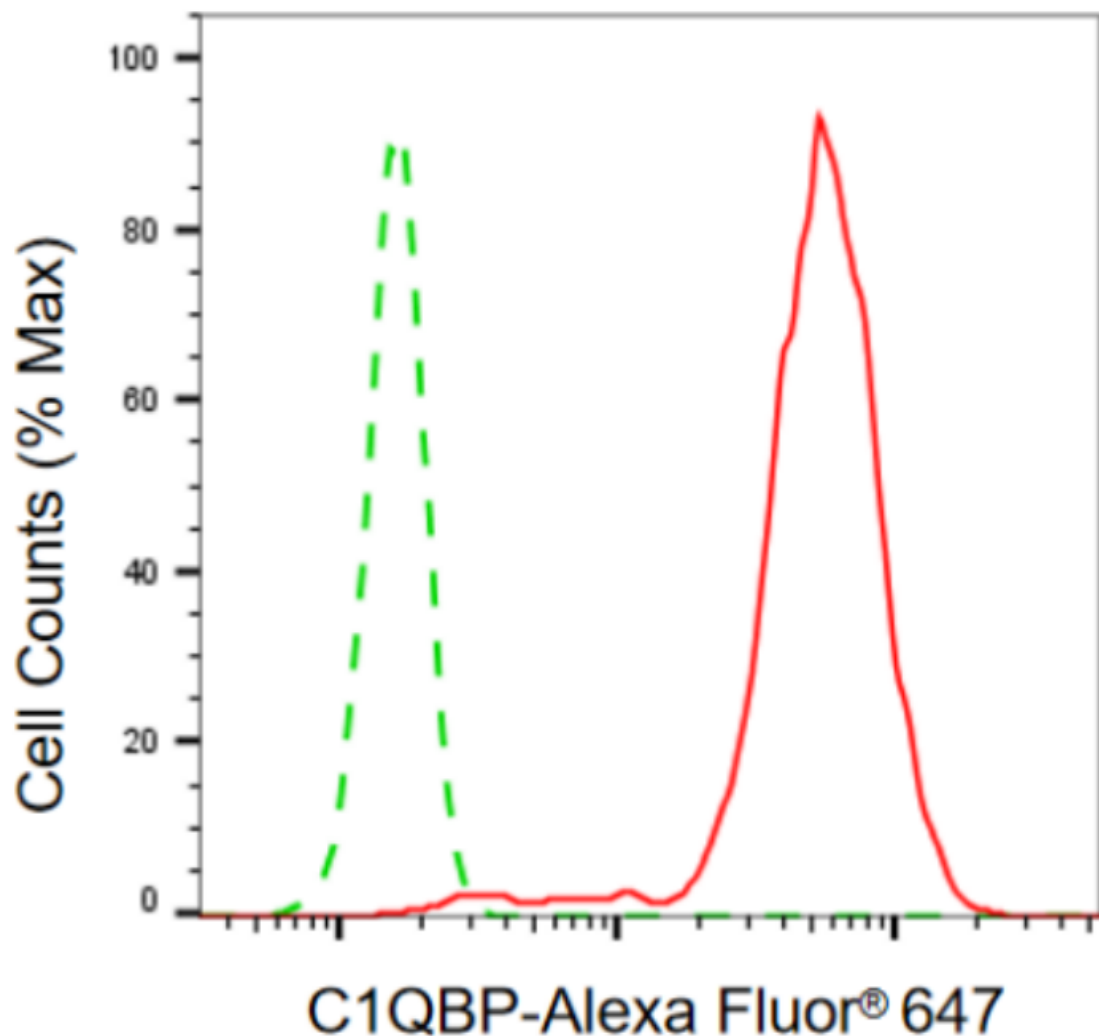
WWW.GENUINBIOTECH.COM

Anti-C1QBP Recombinant Rabbit Monoclonal Antibody

PAGE 2

Note: This product is for research use only.

Validation Data



Copyright ©2024 Genuin Biotechnologies LLC

Flow cytometric analysis of C1QBP expression in HepG2 cells using anti-C1QBP antibody (Cat#3958, 1:2,000). Green, isotype control; red, C1QBP.

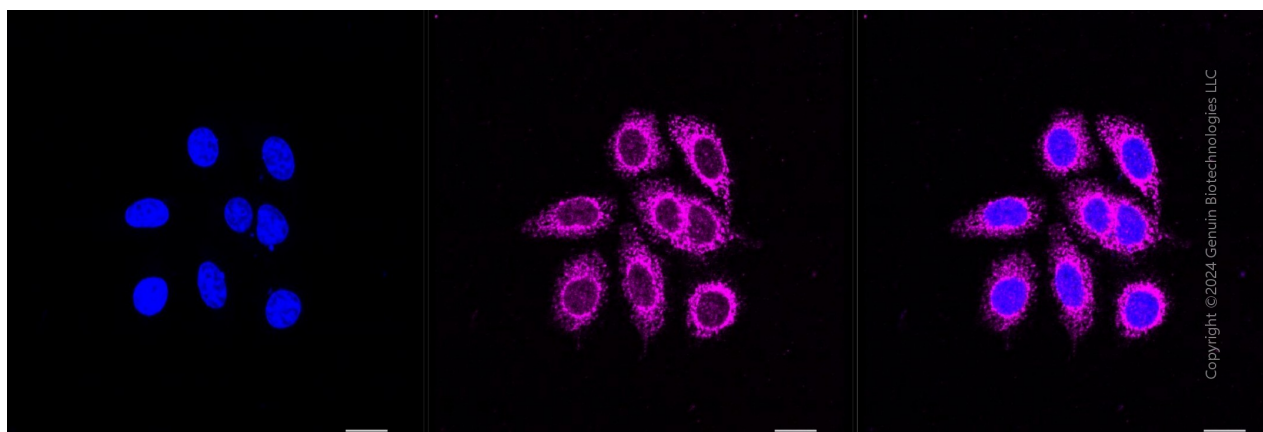
SUPPORT

SUPPORT@GENUINBIOTECH.COM
TEL: +1-540-855-7041

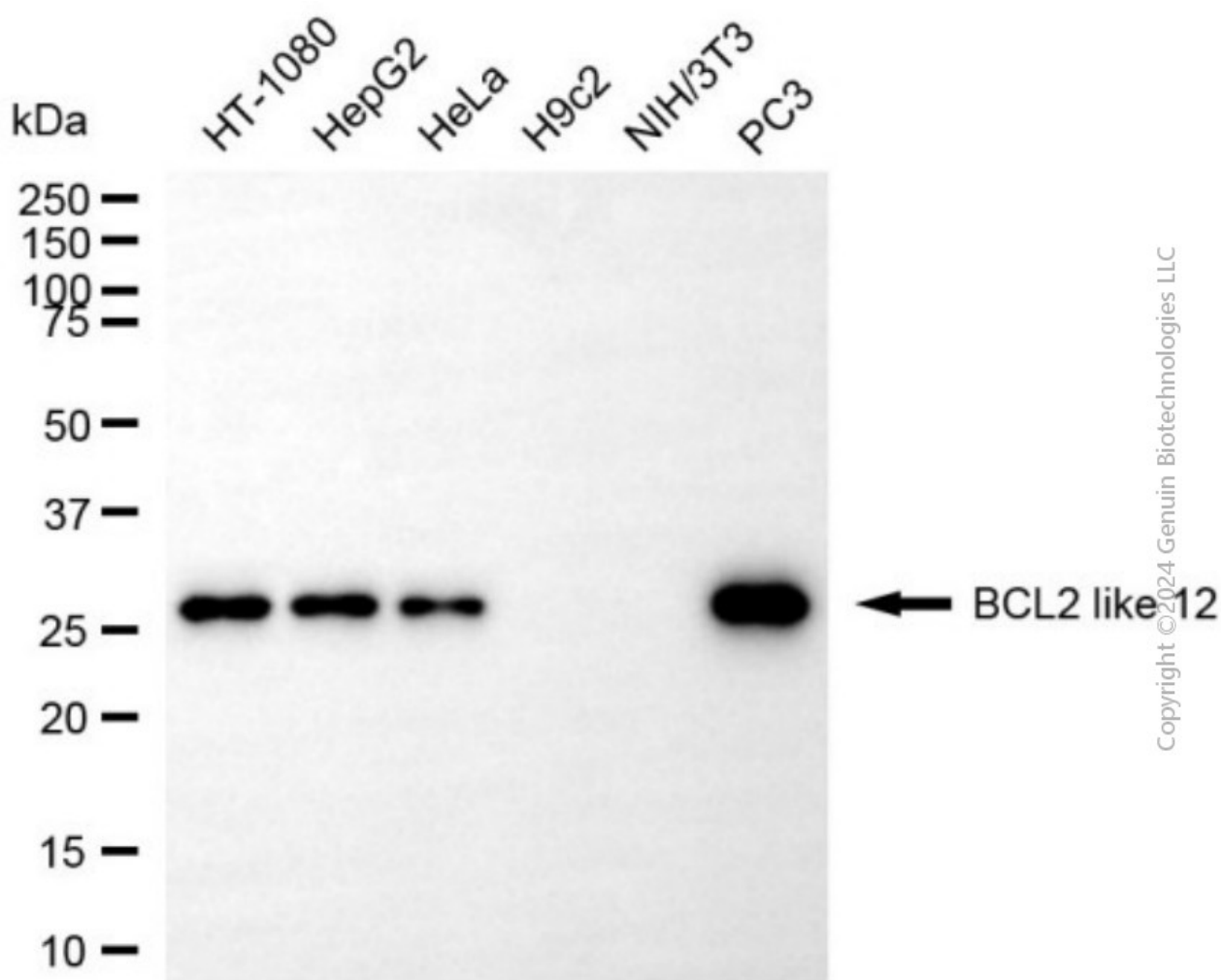
ORDERS

SALES@GENUINBIOTECH.COM
FAX: +1-540-855-7041

WWW.GENUINBIOTECH.COM



Immunocytochemical staining of HepG2 cells with anti-C1QBP antibody (Cat#3958, 1:1,000). Nuclei were stained blue with DAPI; C1QBP was stained magenta with Alexa Fluor® 647. Images were taken using Leica stellaris 5. Protein abundance based on laser Intensity and smart gain: Medium. Scale bar, 20 μ m.



Western blotting analysis using anti-C1QBP antibody (Cat#3958). Total cell lysates (30 μ g) from

Anti-C1QBP Recombinant Rabbit Monoclonal Antibody

PAGE 4

various cell lines were loaded and separated by SDS-PAGE. The blot was incubated with anti-C1QBP antibody (Cat#3958, 1:5,000) and HRP-conjugated goat anti-rabbit secondary antibody (Cat#201, 1:20,000) respectively. Image was developed using NaQ™ ECL Substrate Kit (Cat#716).

SUPPORT

SUPPORT@GENUINBIOTECH.COM
TEL: +1-540-855-7041

ORDERS

SALES@GENUINBIOTECH.COM
FAX: +1-540-855-7041

WWW.GENUINBIOTECH.COM