

Anti-CLP1 Recombinant Rabbit Monoclonal Antibody



Catalog #: 3960

Aliases

CLP1; Cleavage Factor Polyribonucleotide Kinase Subunit 1; HEAB; Cleavage And Polyadenylation Factor I Subunit 1; Polyribonucleotide 5'-Hydroxyl-Kinase Clp1; Pre-mRNA Cleavage Complex II Protein Clp1; Polyadenylation Factor Clp1; Polynucleotide Kinase Clp1; EC 2.7.1.78; HClp1; CLP1, Cleavage And Polyadenylation Factor I Subunit, Homolog (S. Cerevisiae); Polyribonucleotide 5'-Hydroxyl-Kinase; Homolog Of Yeast CFIA Subunit Clp1p; ATP/GTP-Binding Protein; ATP/GTPbinding Protein; HCLP1

Background

Gene Name: CLP1

NCBI Gene Entry: [10978](#)

UniProt Entry: [Q92989](#)

Application Information

Molecular Weight: Predicted, 48 kDa; observed, 48 kDa

Clonality: Rabbit monoclonal antibody

Clone ID: 24GB8890

Species Reactivity: Human

Applications Tested: Western blotting (WB), flow cytometry (FCM), immunocytochemistry (IC)

Immunogen

A synthesized peptide derived from human HEAB

Isotype

Rabbit IgG

Storage Buffer

Supplied in PBS (pH 7.4) containing 50% glycerol, and 0.02% sodium azide.

Storage

Store at -20 °C for one year.

Recommended Dilutions

Western Blotting (WB): 1:1,000-1:5,000

Flow Cytometry (FCM): 1:2,000

Immunocytochemistry (IC): 1:100-1:1,000

SUPPORT

SUPPORT@GENUINBIOTECH.COM
TEL: +1-540-855-7041

ORDERS

SALES@GENUINBIOTECH.COM
FAX: +1-540-855-7041

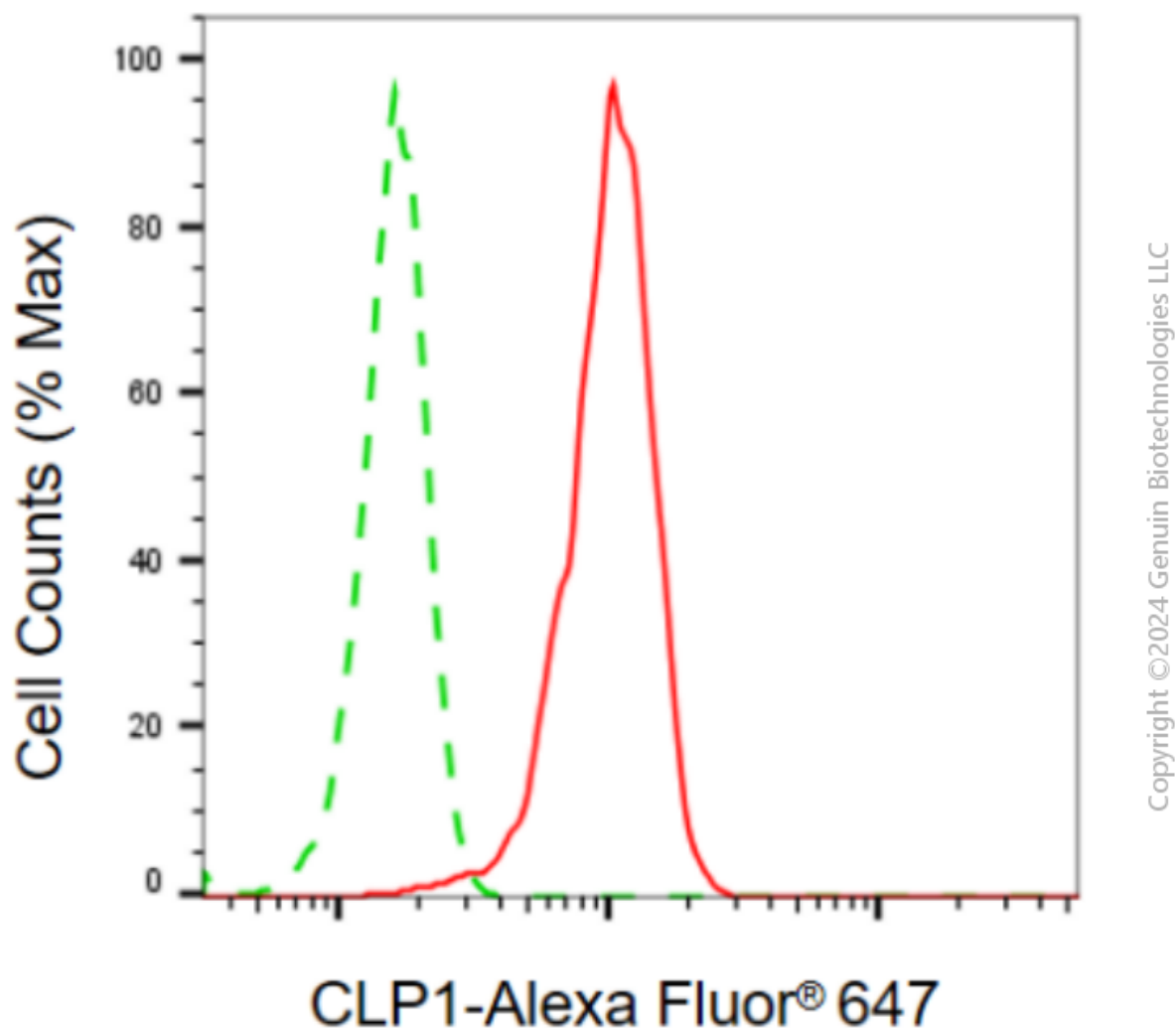
WWW.GENUINBIOTECH.COM

Anti-CLP1 Recombinant Rabbit Monoclonal Antibody

PAGE 2

Note: This product is for research use only.

Validation Data



Flow cytometric analysis of CLP1 expression in HeLa cells using anti-CLP1 antibody (Cat#3960, 1:2,000). Green, isotype control; red, CLP1.

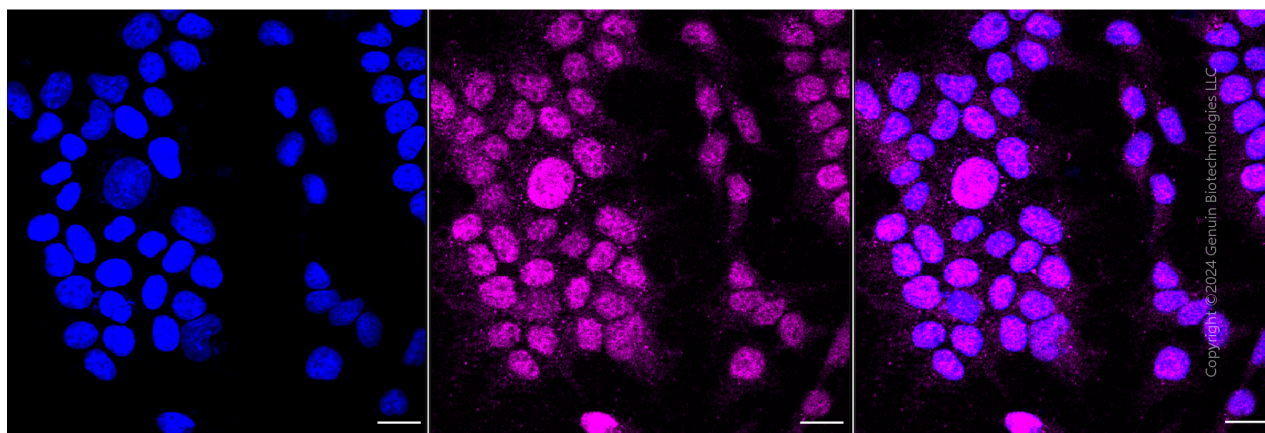
SUPPORT

SUPPORT@GENUINBIOTECH.COM
TEL: +1-540-855-7041

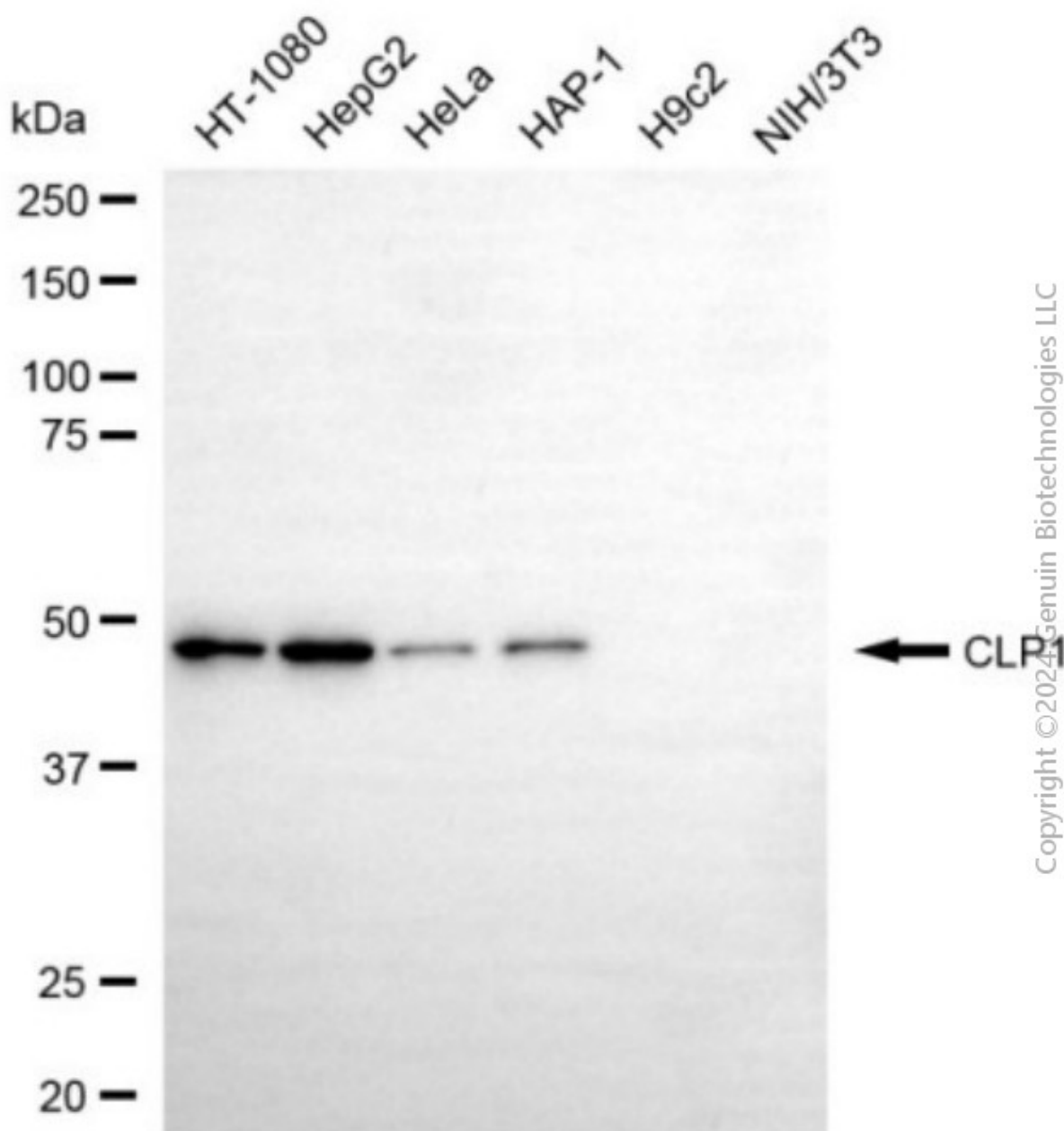
ORDERS

SALES@GENUINBIOTECH.COM
FAX: +1-540-855-7041

WWW.GENUINBIOTECH.COM



Immunocytochemical staining of HeLa cells with anti-CLP1 antibody (Cat#3960, 1:1,000). Nuclei were stained blue with DAPI; CLP1 was stained magenta with Alexa Fluor® 647. Images were taken using Leica stellaris 5. Protein abundance based on laser Intensity and smart gain: Medium. Scale bar, 20 μ m.



Western blotting analysis using anti-CLP1 antibody (Cat#3960). Total cell lysates (30 µg) from various cell lines were loaded and separated by SDS-PAGE. The blot was incubated with anti-CLP1 antibody (Cat#3960, 1:5,000) and HRP-conjugated goat anti-rabbit secondary antibody (Cat#201, 1:20,000) respectively. Image was developed using NaQ™ ECL Substrate Kit (Cat#716).