

# Anti-ELP4 Recombinant Rabbit Monoclonal Antibody



**Catalog #: 3961**

## Aliases

ELP4; Elongator Acetyltransferase Complex Subunit 4; PAXNEB; Elongator Complex Protein 4; PAX6 Neighbor Gene Protein; C11orf19; HELP4; Elongation Protein 4 Homolog (S. Cerevisiae); Chromosome 11 Open Reading Frame 19; Elongation Protein 4 Homolog; DJ68P15A.1; C11ORF19; PAX6NEB; AN2; AN

## Background

Gene Name: ELP4

NCBI Gene Entry: [26610](#)

UniProt Entry: [Q96EB1](#)

## Application Information

Molecular Weight: Predicted, 47 kDa; observed, 46 kDa

Clonality: Rabbit monoclonal antibody

Clone ID: 24GB8895

Species Reactivity: Human, mouse, rat

Applications Tested: Western blotting (WB), flow cytometry (FCM), immunocytochemistry (IC)

## Immunogen

A synthesized peptide derived from human ELP4

## Isotype

Rabbit IgG

## Storage Buffer

Supplied in PBS (pH 7.4) containing 50% glycerol, and 0.02% sodium azide.

## Storage

Store at -20 °C for one year.

## Recommended Dilutions

Western Blotting (WB): 1:1,000-1:5,000

Flow Cytometry (FCM): 1:2,000

Immunocytochemistry (IC): 1:100-1:1,000

---

### SUPPORT

SUPPORT@GENUINBIOTECH.COM  
TEL: +1-540-855-7041

### ORDERS

SALES@GENUINBIOTECH.COM  
FAX: +1-540-855-7041

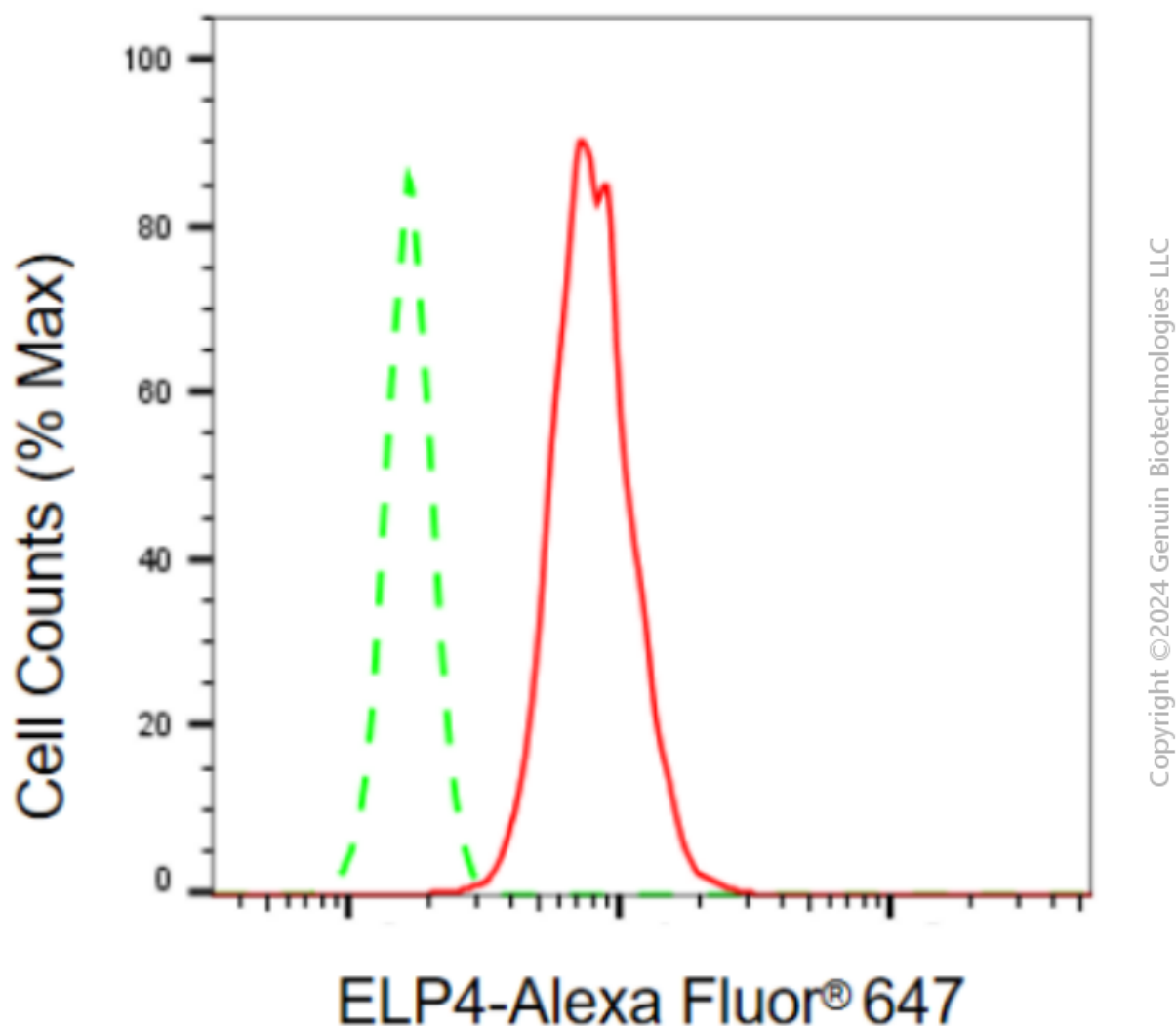
[WWW.GENUINBIOTECH.COM](http://WWW.GENUINBIOTECH.COM)

# Anti-ELP4 Recombinant Rabbit Monoclonal Antibody

PAGE 2

**Note:** This product is for research use only.

## Validation Data



Flow cytometric analysis of ELP4 expression in C2C12 cells using anti-ELP4 antibody (Cat#3961, 1:2,000). Green, isotype control; red, ELP4.

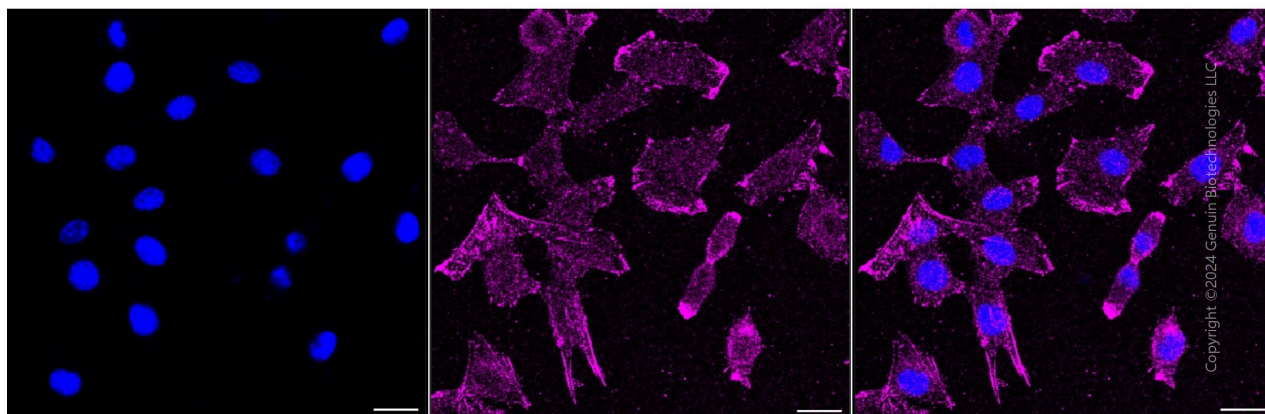
### SUPPORT

SUPPORT@GENUINBIOTECH.COM  
TEL: +1-540-855-7041

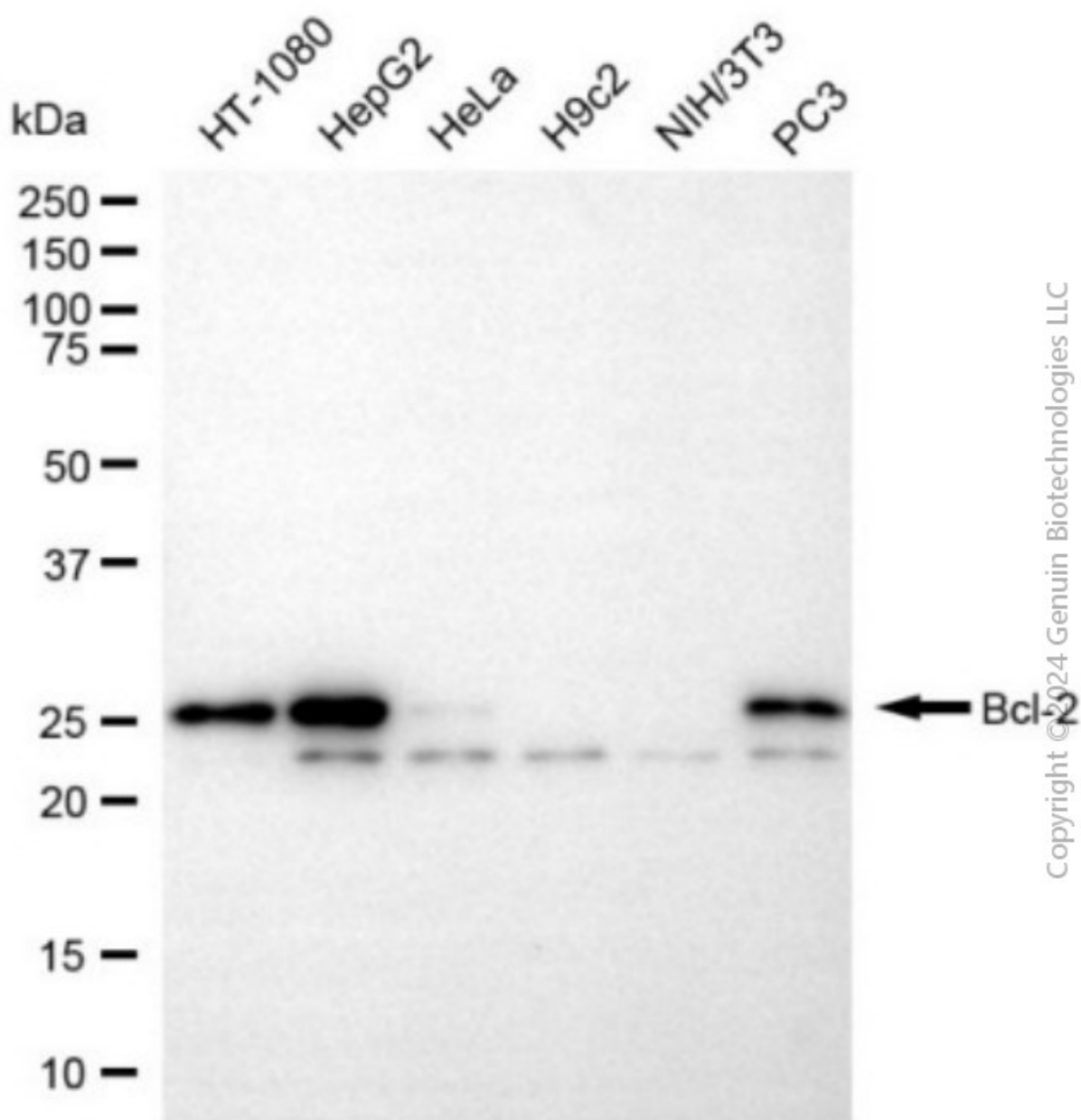
### ORDERS

SALES@GENUINBIOTECH.COM  
FAX: +1-540-855-7041

[WWW.GENUINBIOTECH.COM](http://WWW.GENUINBIOTECH.COM)



Immunocytochemical staining of C2C12 cells with anti-ELP4 antibody (Cat#3961, 1:1,000). Nuclei were stained blue with anti-DAPI; ELP4 was stained magenta with Alexa Fluor® 647. Images were taken using Leica stellaris 5. Protein abundance based on laser Intensity and smart gain: Low. Scale bar, 20  $\mu$ m.



Western blotting analysis using anti-ELP4 antibody (Cat#3961). Total cell lysates (30 µg) from various cell lines were loaded and separated by SDS-PAGE. The blot was incubated with anti-ELP4 antibody (Cat#3961, 1:5,000) and HRP-conjugated goat anti-rabbit secondary antibody (Cat#201, 1:20,000) respectively. Image was developed using NaQ™ ECL Substrate Kit (Cat#716).