

# Anti-AGL Recombinant Rabbit Monoclonal Antibody



**Catalog #: 3966**

## Aliases

AGL; Amylo-Alpha-1, 6-Glucosidase, 4-Alpha-Glucanotransferase; GDE; Glycogen Debranching Enzyme; Amylo-1, 6-Glucosidase, 4-Alpha-Glucanotransferase; Glycogen Debrancher; Amylo-Alpha-1, 6-Glucosidase, 4-Alpha-Glucanotransferaseprovided; Glycogen Storage Disease Type III; Glycogen Debranching Protein

## Background

Gene Name: AGL

NCBI Gene Entry: [178](#)

UniProt Entry: [P35573](#)

## Application Information

Molecular Weight: Predicted, 175 kDa; observed, 150 kDa

Clonality: Rabbit monoclonal antibody

Clone ID: 24GB8920

Species Reactivity: Human, mouse, rat

Applications Tested: Western blotting (WB), flow cytometry (FCM), immunocytochemistry (IC)

## Immunogen

A synthesized peptide derived from human AGL

## Isotype

Rabbit IgG

## Storage Buffer

Supplied in PBS (pH 7.4) containing 50% glycerol, and 0.02% sodium azide.

## Storage

Store at -20 °C for one year.

## Recommended Dilutions

Western Blotting (WB): 1:1,000-1:5,000

Flow Cytometry (FCM): 1:2,000

Immunocytochemistry (IC): 1:100-1:1,000

---

### SUPPORT

SUPPORT@GENUINBIOTECH.COM  
TEL: +1-540-855-7041

### ORDERS

SALES@GENUINBIOTECH.COM  
FAX: +1-540-855-7041

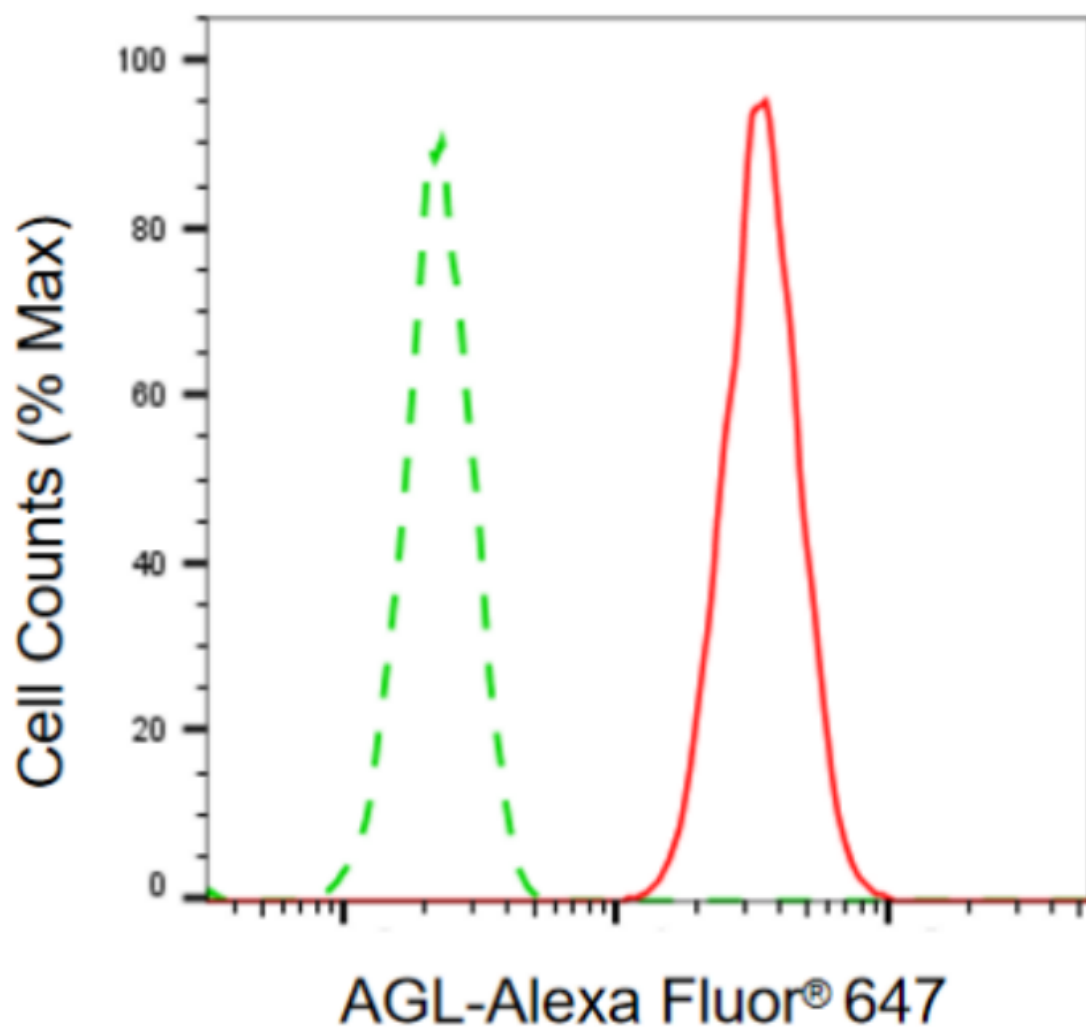
[WWW.GENUINBIOTECH.COM](http://WWW.GENUINBIOTECH.COM)

# Anti-AGL Recombinant Rabbit Monoclonal Antibody

PAGE 2

**Note:** This product is for research use only.

## Validation Data



Copyright ©2024 Genuin Biotechnologies LLC

Flow cytometric analysis of AGL expression in HAP-1 cells using anti-AGL antibody (Cat#3966, 1:2,000). Green, isotype control; red, AGL.

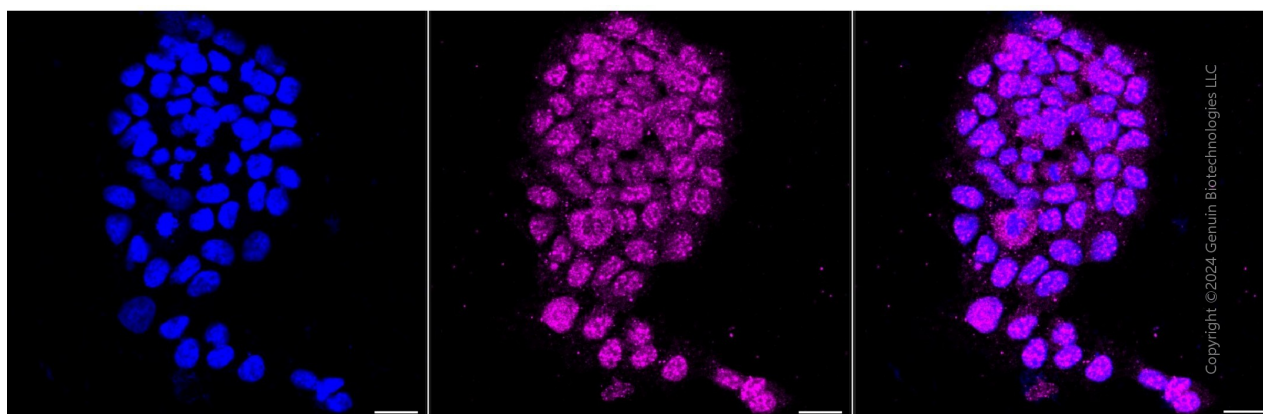
### SUPPORT

SUPPORT@GENUINBIOTECH.COM  
TEL: +1-540-855-7041

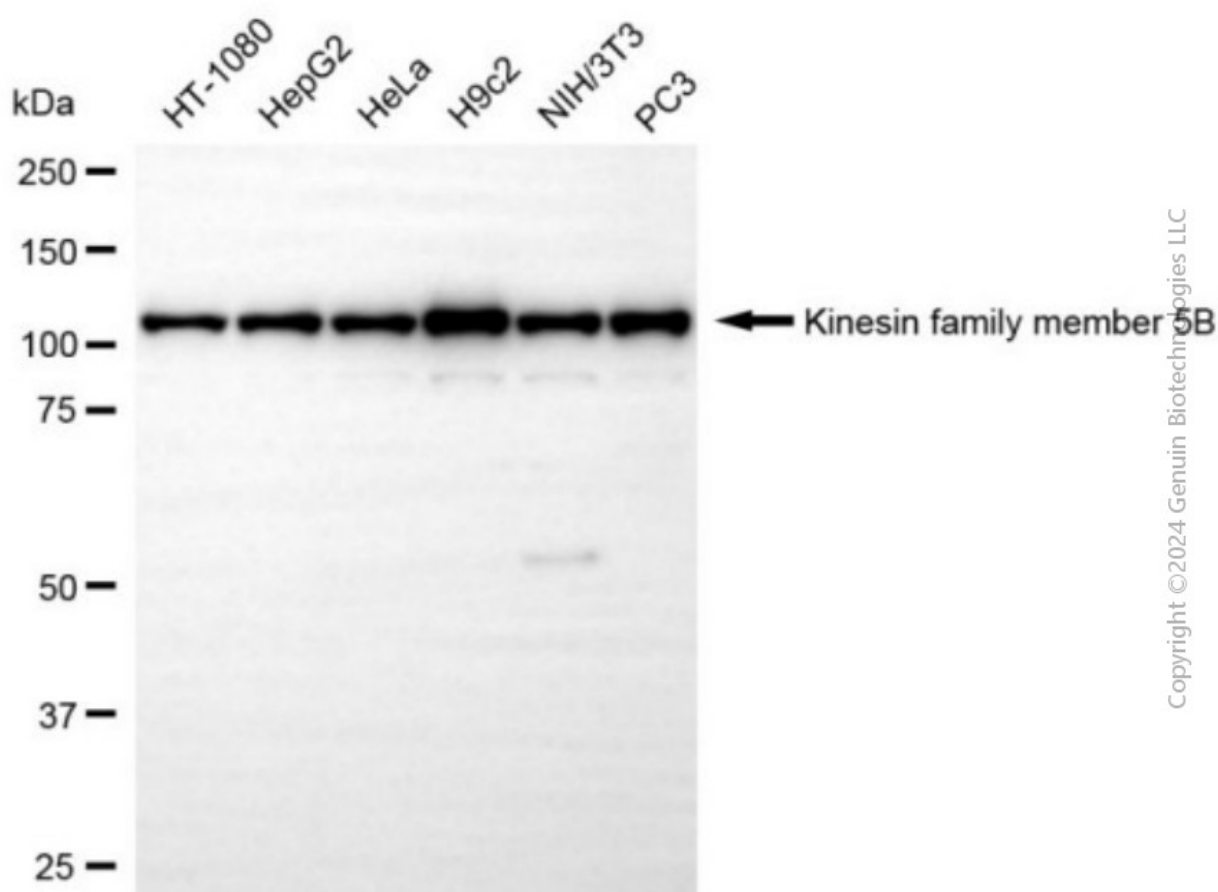
### ORDERS

SALES@GENUINBIOTECH.COM  
FAX: +1-540-855-7041

[WWW.GENUINBIOTECH.COM](http://WWW.GENUINBIOTECH.COM)



Immunocytochemical staining of HAP-1 cells with anti-AGL antibody (Cat#3966, 1:1,000). Nuclei were stained blue with DAPI; AGL was stained magenta with Alexa Fluor® 647. Images were taken using Leica stellaris 5. Protein abundance based on laser Intensity and smart gain: Medium. Scale bar, 20  $\mu$ m.



Western blotting analysis using anti-AGL antibody (Cat#3966). Total cell lysates (30  $\mu$ g) from various cell lines were loaded and separated by SDS-PAGE. The blot was incubated with anti-

## SUPPORT

SUPPORT@GENUINBIOTECH.COM  
TEL: +1-540-855-7041

## ORDERS

SALES@GENUINBIOTECH.COM  
FAX: +1-540-855-7041

[WWW.GENUINBIOTECH.COM](http://WWW.GENUINBIOTECH.COM)

## **Anti-AGL Recombinant Rabbit Monoclonal Antibody**

PAGE 4

AGL antibody (Cat#3966, 1:5,000) and HRP-conjugated goat anti-rabbit secondary antibody (Cat#201, 1:20,000) respectively. Image was developed using FeQ™ ECL Substrate Kit (Cat#226).

---

### **SUPPORT**

SUPPORT@GENUINBIOTECH.COM  
TEL: +1-540-855-7041

### **ORDERS**

SALES@GENUINBIOTECH.COM  
FAX: +1-540-855-7041

**WWW.GENUINBIOTECH.COM**