

Anti-TAF15 Recombinant Rabbit Monoclonal Antibody



Catalog #: 3969

Aliases

TAF15; TATA-Box Binding Protein Associated Factor 15; RBP56; TAF2N; Npl3; TATA Box Binding Protein (TBP)-Associated Factor, RNA Polymerase II, N, 68kD (RNA-Binding Protein 56); TAF15 RNA Polymerase II, TATA Box Binding Protein (TBP)-Associated Factor, 68kDa; TATA-Binding Protein-Associated Factor 2N; HTAFII68; TAFII68; TATA Box-Binding Protein-Associated Factor 2N (RNA-Binding Protein 56); 68 KDa TATA-Binding Protein-Associated Factor; TBP-Associated Factor 15; RNA-Binding Protein 56; RBP56/CSMF Fusion; TAF(II)68

Background

Gene Name: TAF15

NCBI Gene Entry: [8148](#)

UniProt Entry: [Q92804](#)

Application Information

Molecular Weight: Predicted, 62 kDa; observed, 75 kDa

Clonality: Rabbit monoclonal antibody

Clone ID: 24GB8935

Species Reactivity: Human, mouse, rat

Applications Tested: Western blotting (WB), flow cytometry (FCM), immunocytochemistry (IC)

Immunogen

A synthesized peptide derived from human TAF15

Isotype

Rabbit IgG

Storage Buffer

Supplied in PBS (pH 7.4) containing 50% glycerol, and 0.02% sodium azide.

Storage

Store at -20 °C for one year.

Recommended Dilutions

Western Blotting (WB): 1:1,000-1:5,000

Flow Cytometry (FCM): 1:2,000

Immunocytochemistry (IC): 1:100-1:1,000

SUPPORT

SUPPORT@GENUINBIOTECH.COM
TEL: +1-540-855-7041

ORDERS

SALES@GENUINBIOTECH.COM
FAX: +1-540-855-7041

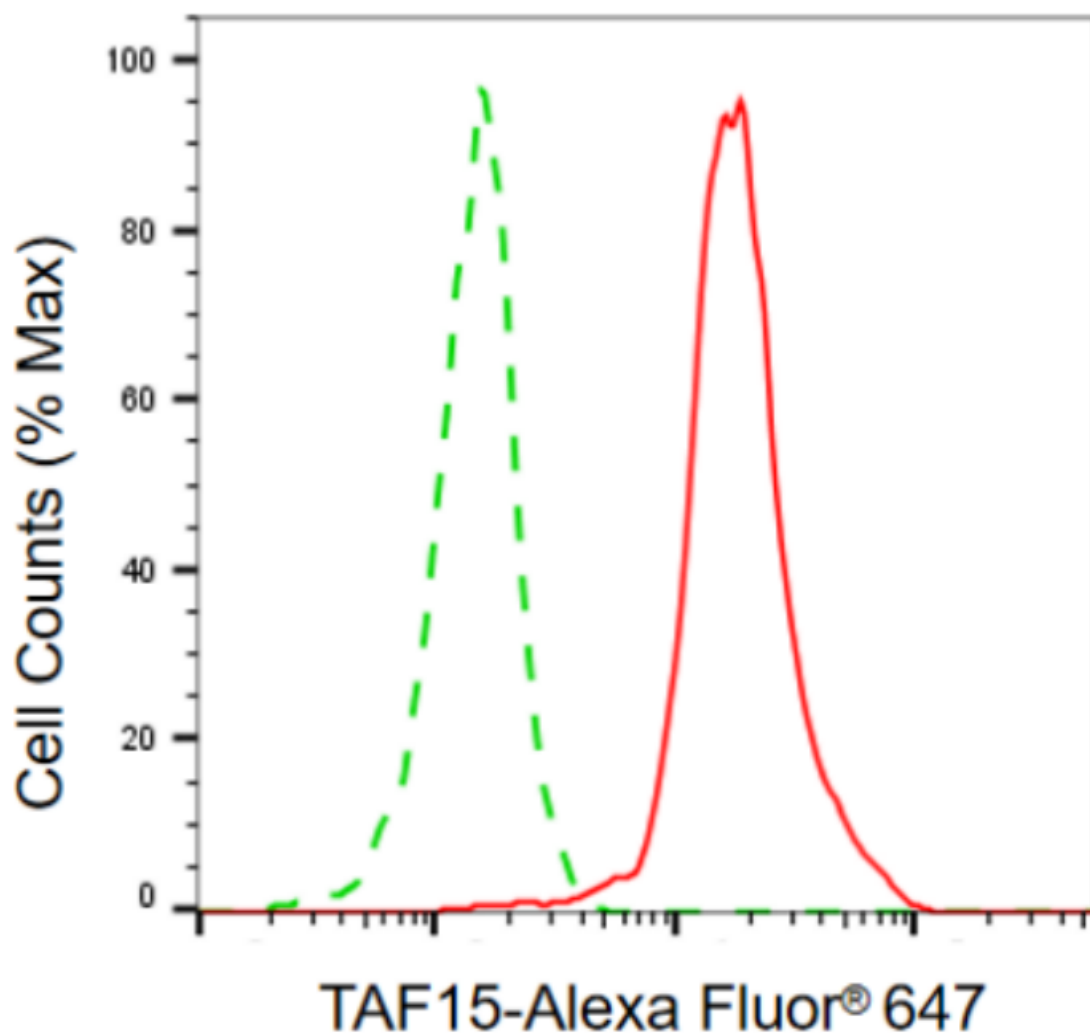
WWW.GENUINBIOTECH.COM

Anti-TAF15 Recombinant Rabbit Monoclonal Antibody

PAGE 2

Note: This product is for research use only.

Validation Data



Copyright ©2024 Genuin Biotechnologies LLC

Flow cytometric analysis of TAF15 expression in HepG2 cells using anti-TAF15 antibody (Cat#3969, 1:2,000). Green, isotype control; red, TAF15.

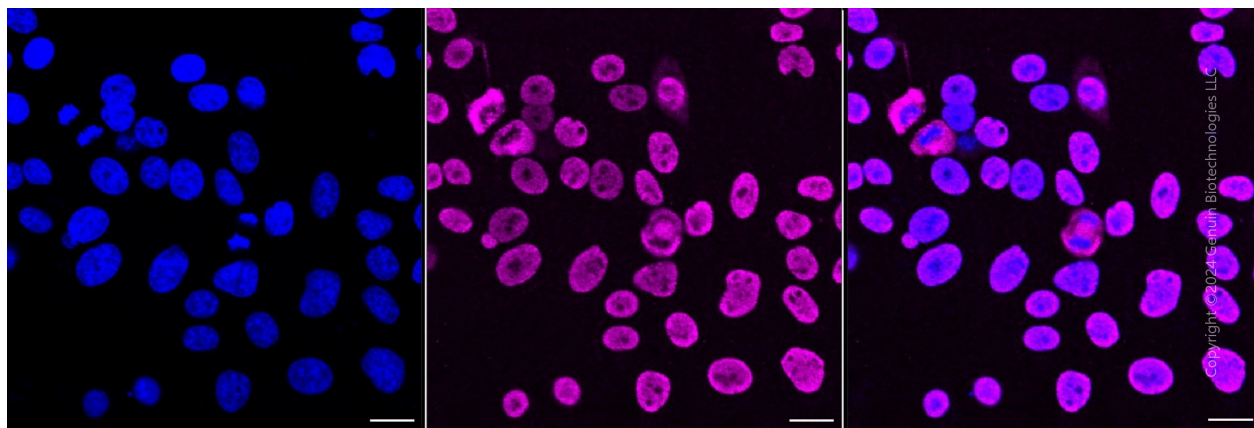
SUPPORT

SUPPORT@GENUINBIOTECH.COM
TEL: +1-540-855-7041

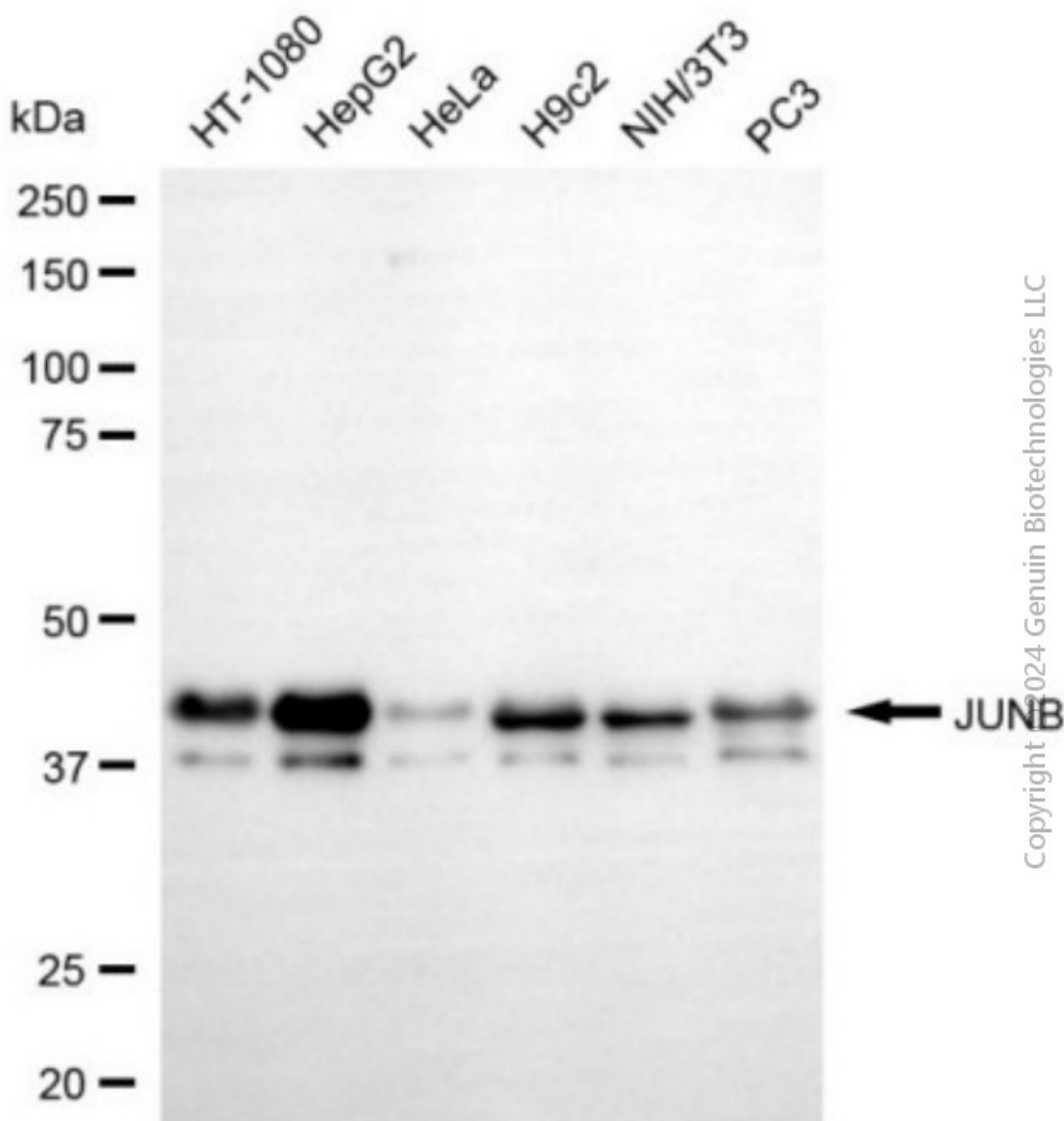
ORDERS

SALES@GENUINBIOTECH.COM
FAX: +1-540-855-7041

WWW.GENUINBIOTECH.COM



Immunocytochemical staining of HepG2 cells with anti-TAF15 antibody (Cat#3969, 1:1,000). Nuclei were stained blue with DAPI; TAF15 was stained magenta with Alexa Fluor® 647. Images were taken using Leica stellaris 5. Protein abundance based on laser Intensity and smart gain: Medium. Scale bar, 20 μ m.



Western blotting analysis using anti-TAF15 antibody (Cat#3969). Total cell lysates (30 μ g) from various cell lines were loaded and separated by SDS-PAGE. The blot was incubated with anti-TAF15 antibody (Cat#3969, 1:5,000) and HRP-conjugated goat anti-rabbit secondary antibody (Cat#201, 1:20,000) respectively. Image was developed using NaQ™ ECL Substrate Kit (Cat#716).