

# Anti-Mitochondrial Ribosomal Protein S15 Recombinant Rabbit Monoclonal Antibody



**Catalog #: 3970**

## Aliases

Mitochondrial Ribosomal Protein S15; 28S Ribosomal Protein S15, Mitochondrial; Small Ribosomal Subunit Protein US15m; FLJ11564; MRP-S15; RPMS15; US15m; S15mt; Mitochondrial Small Ribosomal Subunit Protein US15m; MPR-S15; DC37

## Background

Gene Name: MRPS15

NCBI Gene Entry: [64960](#)

UniProt Entry: [P82914](#)

## Application Information

Molecular Weight: Predicted, 30 kDa; observed, 22 kDa

Clonality: Rabbit monoclonal antibody

Clone ID: 24GB8940

Species Reactivity: Human

Applications Tested: Western blotting (WB), flow cytometry (FCM), immunocytochemistry (IC)

## Immunogen

A synthesized peptide derived from human MRPS15

## Isotype

Rabbit IgG

## Storage Buffer

Supplied in PBS (pH 7.4) containing 50% glycerol, and 0.02% sodium azide.

## Storage

Store at -20 °C for one year.

## Recommended Dilutions

Western Blotting (WB): 1:1,000-1:5,000

Flow Cytometry (FCM): 1:2,000

Immunocytochemistry (IC): 1:100-1:1,000

**Note:** This product is for research use only.

---

### SUPPORT

SUPPORT@GENUINBIOTECH.COM  
TEL: +1-540-855-7041

### ORDERS

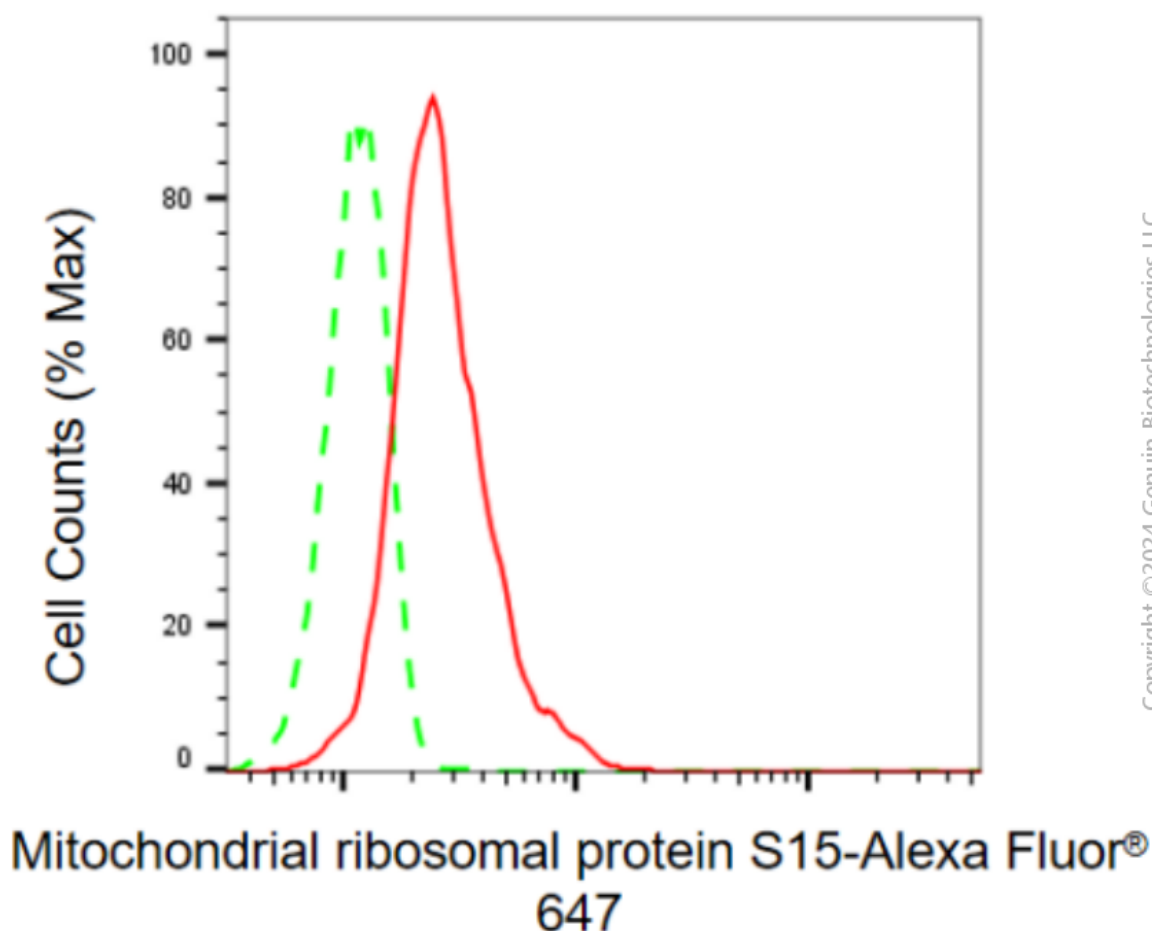
SALES@GENUINBIOTECH.COM  
FAX: +1-540-855-7041

[WWW.GENUINBIOTECH.COM](http://WWW.GENUINBIOTECH.COM)

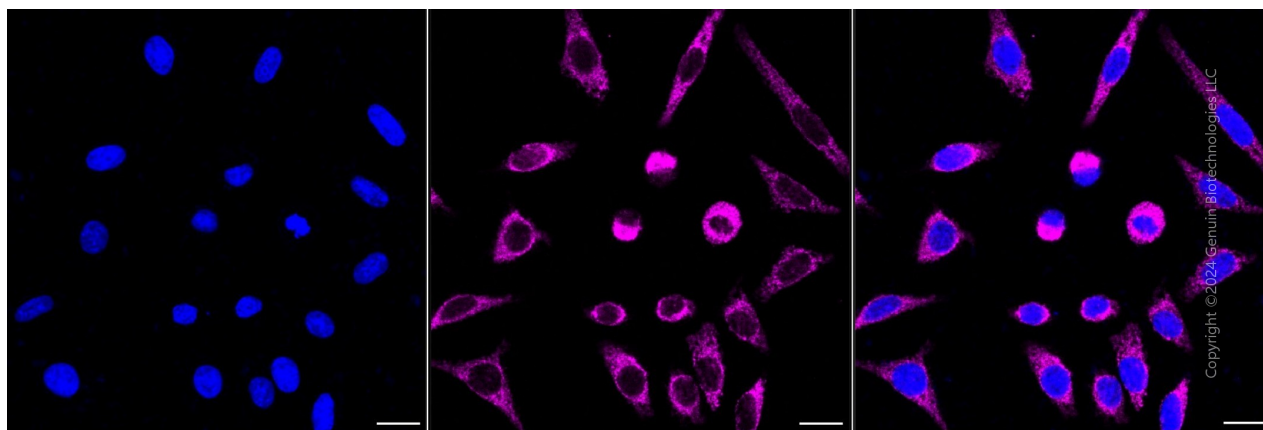
# Anti-Mitochondrial Ribosomal Protein S15 Recombinant Rabbit Monoclonal Antibody

PAGE 2

## Validation Data



Flow cytometric analysis of mitochondrial ribosomal protein S15 expression in HepG2 cells using anti-mitochondrial ribosomal protein S15 antibody (Cat#3970, 1:2,000). Green, isotype control; red, mitochondrial ribosomal protein S15.



Immunocytochemical staining of HepG2 cells with anti-Mitochondrial ribosomal protein S15

### SUPPORT

SUPPORT@GENUINBIOTECH.COM  
TEL: +1-540-855-7041

### ORDERS

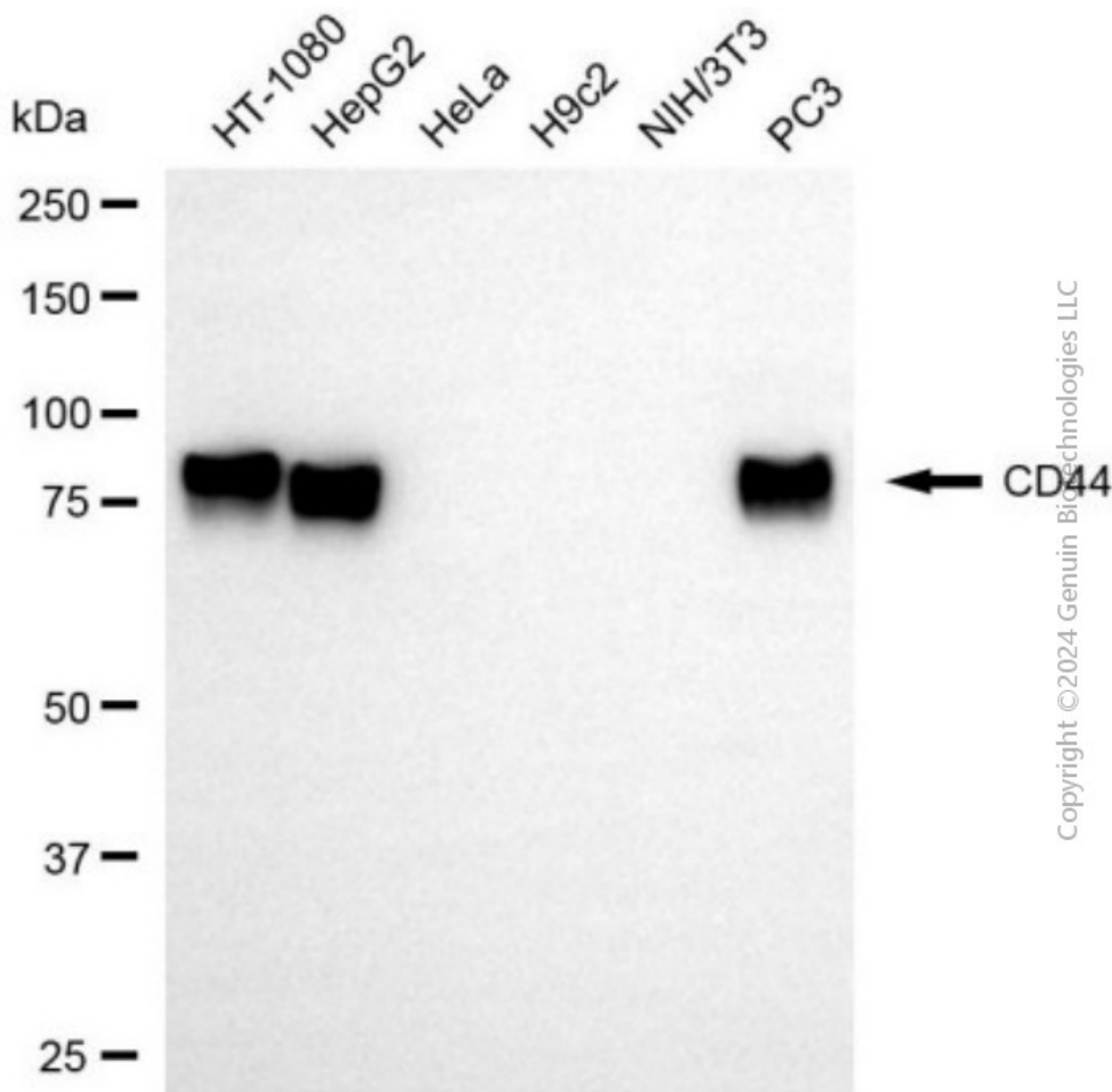
SALES@GENUINBIOTECH.COM  
FAX: +1-540-855-7041

WWW.GENUINBIOTECH.COM

## Anti-Mitochondrial Ribosomal Protein S15 Recombinant Rabbit Monoclonal Antibody

PAGE 3

antibody (Cat#3970, 1:1,000). Nuclei were stained blue with DAPI; Mitochondrial ribosomal protein S15 was stained magenta with Alexa Fluor® 647. Images were taken using Leica stellaris 5. Protein abundance based on laser Intensity and smart gain: Medium. Scale bar, 20  $\mu$ m.



Western blotting analysis using anti-mitochondrial ribosomal protein S15 antibody (Cat#3970). Total cell lysates (30  $\mu$ g) from various cell lines were loaded and separated by SDS-PAGE. The blot was incubated with anti-mitochondrial ribosomal protein S15 antibody (Cat#3970, 1:5,000) and HRP-conjugated goat anti-rabbit secondary antibody (Cat#201, 1:20,000) respectively. Image was developed using NaQ™ ECL Substrate Kit (Cat#716).

### SUPPORT

SUPPORT@GENUINBIOTECH.COM  
TEL: +1-540-855-7041

### ORDERS

SALES@GENUINBIOTECH.COM  
FAX: +1-540-855-7041

WWW.GENUINBIOTECH.COM