

Anti-Synaptosome Associated Protein 29 Recombinant Rabbit Monoclonal Antibody



Catalog #: 3974

Aliases

SNAP29; Synaptosome Associated Protein 29; SNAP-29; Soluble 29 KDa NSF Attachment Protein; CEDNIK; Cerebral Dysgenesis, Neuropathy, Ichthyosis And Keratoderma Syndrome; Vesicle-Membrane Fusion Protein SNAP-29; Synaptosomal-Associated Protein, 29kDa; Synaptosomal-Associated Protein 29; Synaptosomal-Associated Protein, 29kD; Synaptosome Associated Protein 29kDa

Background

Gene Name: SNAP29
NCBI Gene Entry: [9342](#)
UniProt Entry: [O95721](#)

Application Information

Molecular Weight: Predicted, 29 kDa; observed, 27 kDa
Clonality: Rabbit monoclonal antibody
Clone ID: 24GB8960
Species Reactivity: Human, mouse, rat
Applications Tested: Western blotting (WB), flow cytometry (FCM), immunocytochemistry (IC)

Immunogen

A synthesized peptide derived from human SNAP29

Isotype

Rabbit IgG

Storage Buffer

Supplied in PBS (pH 7.4) containing 50% glycerol, and 0.02% sodium azide.

Storage

Store at -20 °C for one year.

Recommended Dilutions

Western Blotting (WB): 1:1,000-1:5,000
Flow Cytometry (FCM): 1:2,000
Immunocytochemistry (IC): 1:100-1:1,000

SUPPORT

SUPPORT@GENUINBIOTECH.COM
TEL: +1-540-855-7041

ORDERS

SALES@GENUINBIOTECH.COM
FAX: +1-540-855-7041

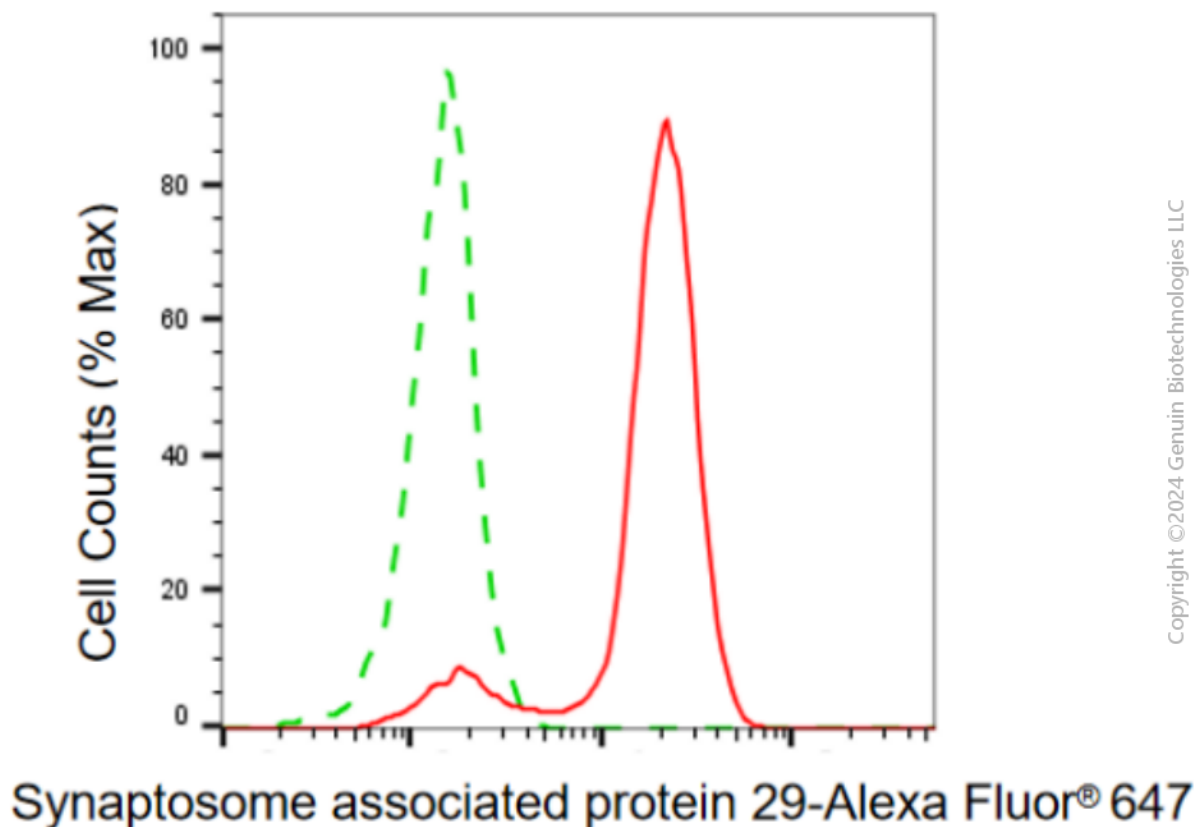
WWW.GENUINBIOTECH.COM

Anti-Synaptosome Associated Protein 29 Recombinant Rabbit Monoclonal Antibody

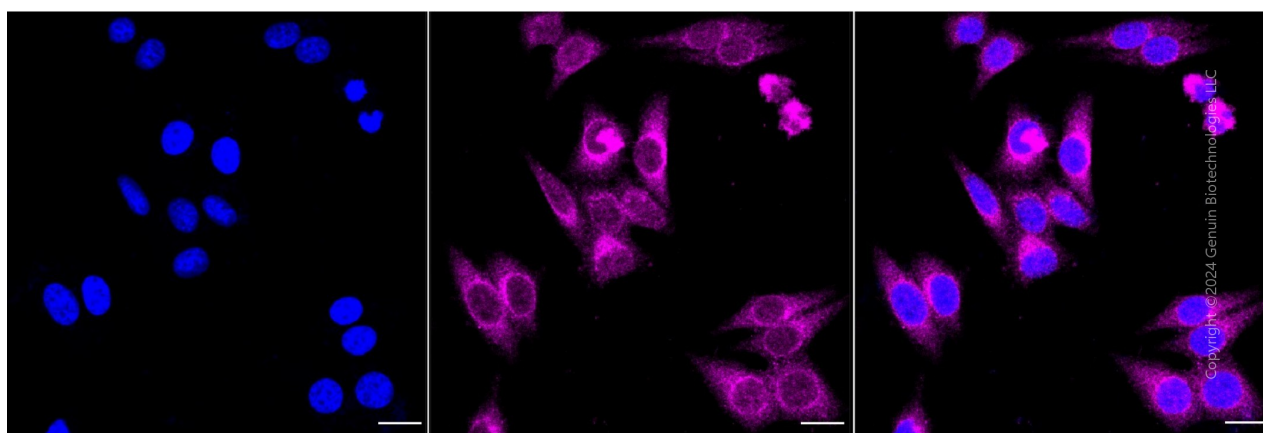
PAGE 2

Note: This product is for research use only.

Validation Data



Flow cytometric analysis of synaptosome associated protein 29 expression in HepG2 cells using anti-synaptosome associated protein 29 antibody (Cat#3974, 1:2,000). Green, isotype control; red, synaptosome associated protein 29.



Immunocytochemical staining of HepG2 cells with anti-Synaptosome associated protein 29 antibody (Cat#3974, 1:1,000). Nuclei were stained blue with DAPI; Synaptosome associated

SUPPORT

SUPPORT@GENUINBIOTECH.COM
TEL: +1-540-855-7041

ORDERS

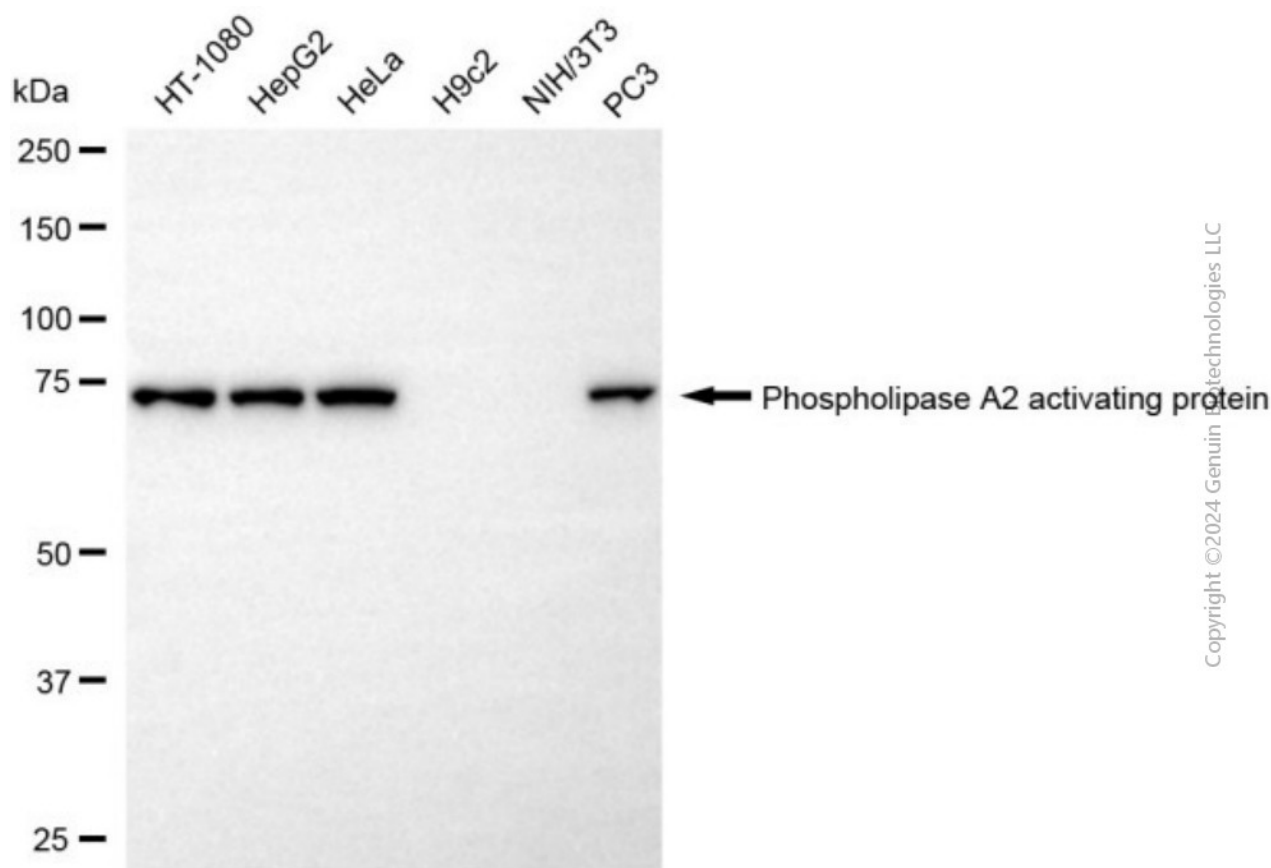
SALES@GENUINBIOTECH.COM
FAX: +1-540-855-7041

WWW.GENUINBIOTECH.COM

Anti-Synaptosome Associated Protein 29 Recombinant Rabbit Monoclonal Antibody

PAGE 3

protein 29 was stained magenta with Alexa Fluor® 647. Images were taken using Leica stellaris 5. Protein abundance based on laser Intensity and smart gain: Medium. Scale bar, 20 µm.



Western blotting analysis using anti-synaptosome associated protein 29 antibody (Cat#3974). Total cell lysates (30 µg) from various cell lines were loaded and separated by SDS-PAGE. The blot was incubated with anti-synaptosome associated protein 29 antibody (Cat#3974, 1:5,000) and HRP-conjugated goat anti-rabbit secondary antibody (Cat#201, 1:20,000) respectively. Image was developed using FeQ™ ECL Substrate Kit (Cat#226).

SUPPORT

SUPPORT@GENUINBIOTECH.COM
TEL: +1-540-855-7041

ORDERS

SALES@GENUINBIOTECH.COM
FAX: +1-540-855-7041

WWW.GENUINBIOTECH.COM