

Anti-CCDC98 Recombinant Rabbit Monoclonal Antibody



Catalog #: 3976

Aliases

ABRAXAS1; Antibodyraxas 1, BRCA1 A Complex Subunit 2; ABRA1; FAM175A; CCDC98; Family With Sequence Similarity 175 Member A; BRCA1-A Complex Subunit Antibodyraxas 1; Coiled-Coil Domain Containing 98; Antibodyraxas Protein; FLJ13614; ABRAXAS; Family With Sequence Similarity 175, Member A; Coiled-Coil Domain-Containing Protein 98; Protein FAM175A

Background

Gene Name: ABRAXAS1

NCBI Gene Entry: [84142](#)

UniProt Entry: [Q6UWZ7](#)

Application Information

Molecular Weight: Predicted, 47 kDa; observed, 50 kDa

Clonality: Rabbit monoclonal antibody

Clone ID: 24GB8970

Species Reactivity: Human

Applications Tested: Western blotting (WB), flow cytometry (FCM), immunocytochemistry (IC)

Immunogen

A synthesized peptide derived from human CCDC98

Isotype

Rabbit IgG

Storage Buffer

Supplied in PBS (pH 7.4) containing 50% glycerol, and 0.02% sodium azide.

Storage

Store at -20 °C for one year.

Recommended Dilutions

Western Blotting (WB): 1:1,000-1:5,000

Flow Cytometry (FCM): 1:2,000

Immunocytochemistry (IC): 1:100-1:1,000

SUPPORT

SUPPORT@GENUINBIOTECH.COM
TEL: +1-540-855-7041

ORDERS

SALES@GENUINBIOTECH.COM
FAX: +1-540-855-7041

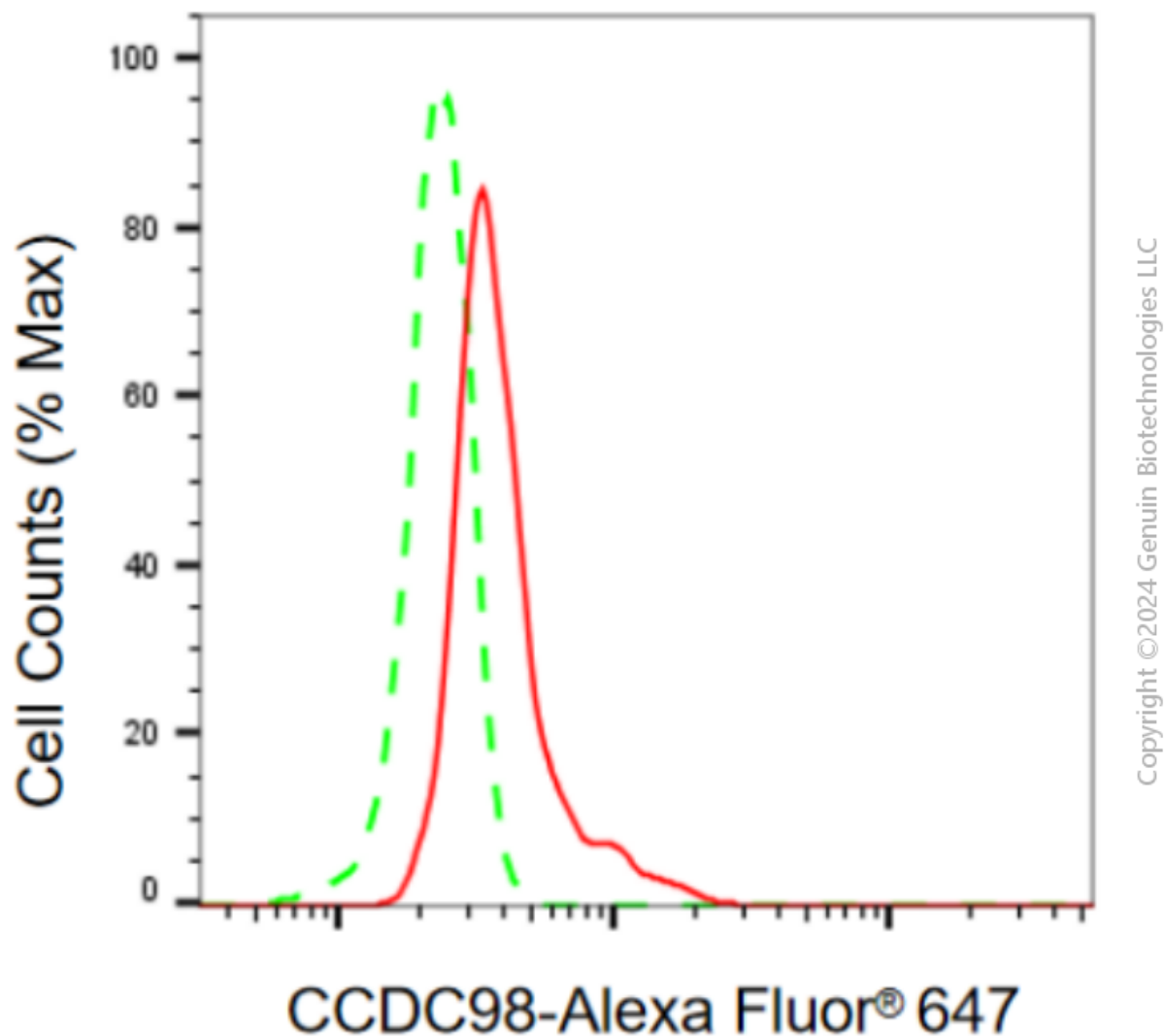
WWW.GENUINBIOTECH.COM

Anti-CCDC98 Recombinant Rabbit Monoclonal Antibody

PAGE 2

Note: This product is for research use only.

Validation Data



Flow cytometric analysis of CCDC98 expression in HT-1080 cells using anti-CCDC98 antibody (Cat#3976, 1:2,000). Green, isotype control; red, CCDC98.

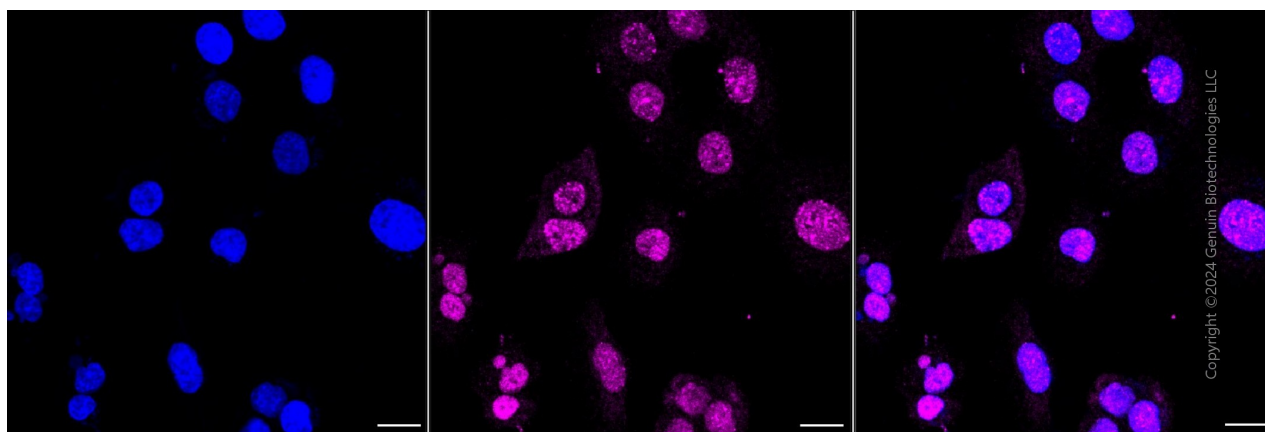
SUPPORT

SUPPORT@GENUINBIOTECH.COM
TEL: +1-540-855-7041

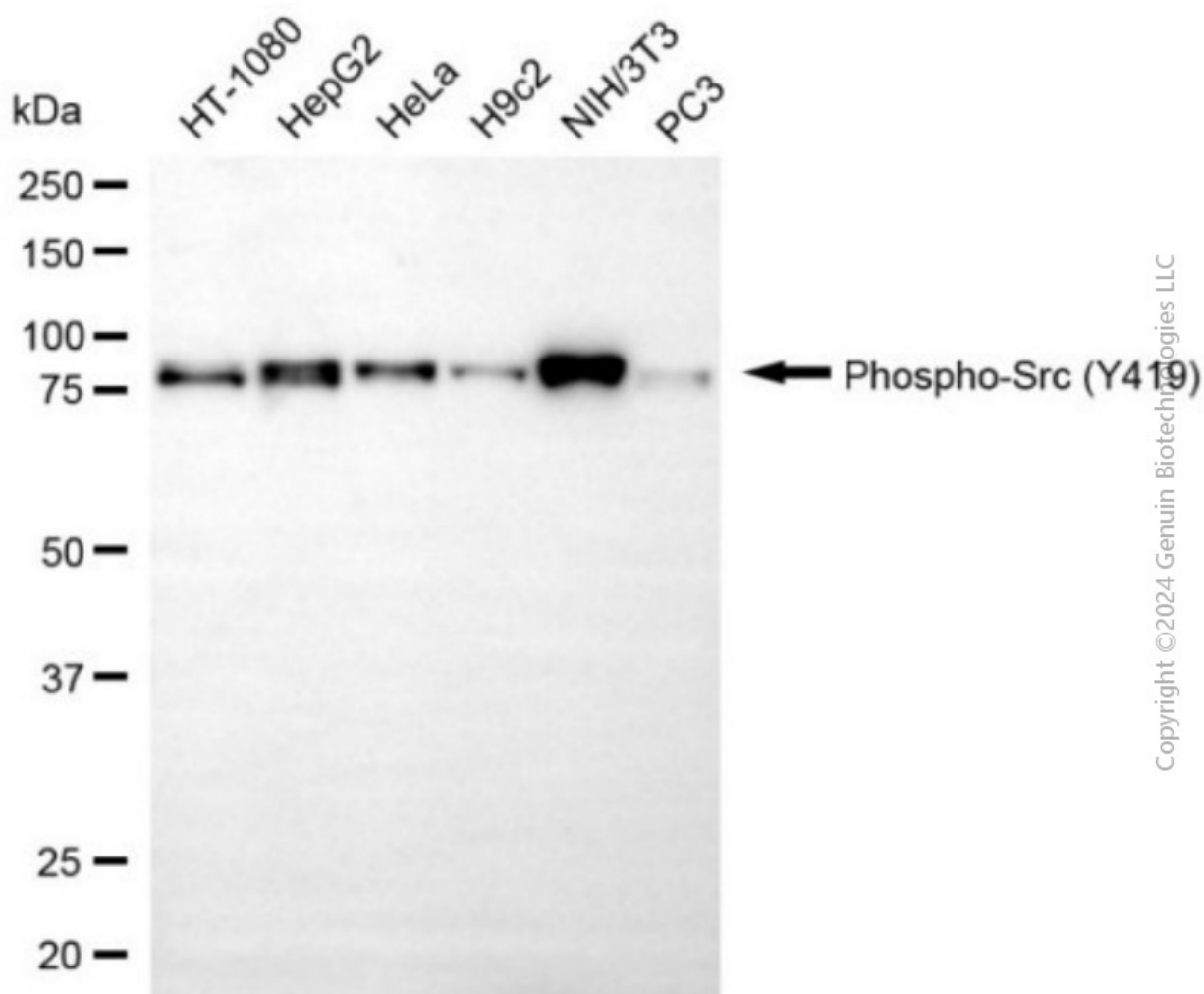
ORDERS

SALES@GENUINBIOTECH.COM
FAX: +1-540-855-7041

WWW.GENUINBIOTECH.COM



Immunocytochemical staining of HT-1080 cells with anti-CCDC98 antibody (Cat#3976, 1:1,000). Nuclei were stained blue with DAPI; CCDC98 was stained magenta with Alexa Fluor® 647. Images were taken using Leica stellaris 5. Protein abundance based on laser Intensity and smart gain: Medium. Scale bar, 20 μ m.



Western blotting analysis using anti-CCDC98 antibody (Cat#3976). Total cell lysates (30 μ g) from

SUPPORT

SUPPORT@GENUINBIOTECH.COM
TEL: +1-540-855-7041

ORDERS

SALES@GENUINBIOTECH.COM
FAX: +1-540-855-7041

WWW.GENUINBIOTECH.COM

Anti-CCDC98 Recombinant Rabbit Monoclonal Antibody

PAGE 4

various cell lines were loaded and separated by SDS-PAGE. The blot was incubated with anti-CCDC98 antibody (Cat#3976, 1:5,000) and HRP-conjugated goat anti-rabbit secondary antibody (Cat#201, 1:20,000) respectively. Image was developed using NaQ™ ECL Substrate Kit (Cat#716).

SUPPORT

SUPPORT@GENUINBIOTECH.COM
TEL: +1-540-855-7041

ORDERS

SALES@GENUINBIOTECH.COM
FAX: +1-540-855-7041

WWW.GENUINBIOTECH.COM